

Meteoric isotopic gradient on the windward side of the Sierra Madre Oriental area, Veracruz – Mexico

Juan Pérez Quezadas*, Alejandra Cortés Silva, Salvatore Inguaggiato, María del Rocío Salas Ortega, Juan Cervantes Pérez and Victor Michael Heilweil

Received: April 01, 2014; accepted: January 13, 2015; published on line: June 30, 2015

DOI: 10.1016/j.gi.2015.04.021

Resumen

Se caracterizó la composición isotópica $\delta^{18}\text{O}$ ‰ y δD ‰, del agua meteórica en el flanco oriental de la Faja Volcánica Transmexicana, sobre un transecto de 90 km que parte de nivel de mar hasta 4220 msnm. Las muestras de lluvia fueron colectadas, durante los años 2007 a 2012, en temporada de lluvia (mayo a Octubre). Se obtuvo una Línea Meteórica Local (LML) bajo una regresión lineal la cual queda descrita por $\delta\text{D} = 7.4 \delta^{18}\text{O} + 7.3$, $R^2 = 0.99$. Esta línea tiende a separarse de la Línea Meteórica Mundial (LMM) donde la precipitación ocurre a altitudes mayores a 3000 msnm, debido a un enriquecimiento en Deuterio. El resultado obtenido en esta investigación fue comparado con los datos isotópicos, colectados en el Puerto de Veracruz, extraídos de la base de datos de la Red Mundial de Isótopos en Precipitación. El gradiente altitudinal de $\delta^{18}\text{O}$, es descrito por una regresión lineal $\delta^{18}\text{O} = -2.1 (Z \text{ km}) - 5.56$, $R^2 = 0.86$, la cual implica un gradiente vertical de -0.21 ‰/100m . Finalmente, el registro isotópico en agua meteórica durante los años de observación en esta investigación muestra un enriquecimiento en $\delta^{18}\text{O}$ y δD a una altitud aproximada de 1400 msnm, probablemente influenciado por la topografía y/o relacionado por efectos isotópicos de tormentas tropicales, típicas de estas latitudes. Esta caracterización aumentará la comprensión de importantes procesos hidrológicos y proporcionará la base para futuras investigaciones hidrológicas.

Palabras clave: Isótopos estables, gradiente isotópico, Veracruz México, composición isotópica, precipitación.

Abstract

The isotopic composition ($\delta^{18}\text{O}$, δD ‰) of precipitation in the windward side of the Sierra Madre Oriental on the eastern flank of the Mexican Volcanic Belt was characterized along a 90 km transect from sea level up to an altitude of 4220 meters. Rain samples were collected during the rainy season (May through October) from 2007 through 2012. The Local Meteoric Water Line (LMWL), determined with linear regression of isotope results, is $\delta\text{D} = 7.44 \delta^{18}\text{O} + 7.3$, $R^2 = 0.99$. This line departs from the Global Meteoric Water Line (GMWL) for precipitation at altitudes greater than 3000 masl due to deuterium enrichment processes. The results obtained in this research were compared with isotopic data of the Global Network of Isotopes Precipitation (GNIP) data base from the port of Veracruz. The altitude (Z) gradient of $\delta^{18}\text{O}$ was also determined by the linear regression of precipitation data, resulting in the relation $\delta^{18}\text{O} = -2.1Z - 5.56$, $R^2 = 0.86$, where Z is altitude in kilometers. This implies a $\delta^{18}\text{O}$ vertical gradient of -0.21 ‰/100 m , which falls within the normal range described in the literature for tropical areas. Finally, the isotopic record of meteoric waters during the years of observation shows anomalous enrichment in $\delta^{18}\text{O}$ and δD at an altitude of about 1400 m, probably influenced by the local topography and/or an isotope effect related to tropical storms typical of this latitude. This characterization will increase the understanding of important hydrological processes and will provide a foundation for future hydrological research.

Key words: Stable isotopes, isotopic gradient, Veracruz, México, isotopic composition, precipitation.

J. Pérez*
Centro de Geociencias
Universidad Nacional Autónoma de México
Campus Juriquilla
Querétaro, Qro., México
*Corresponding autor: pquezadas_1@hotmail.com

A. Cortés
Instituto de Geofísica,
Universidad Nacional Autónoma de México
Ciudad Universitaria
Delegación Coyoacán, 04510
México, D.F., México

S. Inguaggiato
National Institute of Geophysics and Volcanology
Palermo, Italy

M. R. Salas
J. Cervantes
Centro de Ciencias de la Tierra
Universidad Veracruzana
Xalapa, Veracruz, México

V. Heilweil
U.S. Geological Survey-
Utah Water Science Center
Salt Lake City, U.S.A.

Introduction

The isotopic characterization of local rainfall in water-resource studies is very important, considering that such precipitation typically represents the primary source of recharge to groundwater systems. This isotopic signature can subsequently be used to trace groundwater flow within the aquifer. On the basis of 400 stable isotopic ($\delta^2\text{H}$ and $\delta^{18}\text{O}$) samples of water (rivers, rain and snow) at different geographical locations, the linear relationship $\delta^2\text{H}$ (δD) = $8\delta^{18}\text{O} + 10$ was defined by Craig (1961) as the Global Meteoric Water Line (GMWL). Dansgaard (1964), using data from GNIP (Global Network of Isotopes in Precipitation, 2012), found that isotopic ratios of monthly precipitation recorded at stations located in the northern continental hemisphere complied with the GMWL. Significant deviations from the GMWL line, however, were observed relative to other continents and islands. These deviations were attributed to differences in the local weather conditions and in the processes controlling precipitation. The analysis of the GNIP data for the periods 1960-1978 and 1960-1987 were reported by Yurtsever and Gat (1981) and Rozanski *et al.* (1993), respectively. Using the same methodology described by previous authors, the IAEA (International Atomic Energy Agency, 2005) processed data from 1961 to 2000 and found that the arithmetic mean of the isotopic ratios in precipitation recorded from 410 stations distributed globally are well-described by the equation: $\delta\text{D} = 8.07 (\pm 0.02) \delta^{18}\text{O} + 9.9 (\pm 0.1)$, $R^2 = 0.98$. The deuterium excess can be described globally as $d_{\text{ex}} = \delta^2\text{H} - 8\delta^{18}\text{O}$. The weighted averages of long-term precipitation for the same period (1961-2000) were calculated by GNIP from a subset of measurements during years for which more than 70% of precipitation during that year was analyzed for a given isotope (with a minimum requirement of at least one full year of data). The weighted average correlation is $\delta\text{D} = 8.14 (\pm 0.02) \delta^{18}\text{O} + 10.9 (\pm 0.2)$, $R^2 = 0.98$.

There are several widely documented effects that control the spatial variation of the isotopic composition in the meteoric waters including altitude, latitude, continental, amount and season (Clark and Fritz, 1997). Of these, altitude (topography) is considered the most important factor. It has been shown that on the windward side of the mountains, the $\delta^{18}\text{O}$ and δD ratios of rain decrease (become isotopically depleted) with increasing altitude. This is mainly due to the combination of two factors: (1) rainfall becomes progressively depleted by the loss of isotopically heavy isotopes as rain events progress in a topographically up gradient

direction and, (2) the temperature is lower and thus the condensate becomes isotopically enriched because of fractionation (Clark and Fritz, 1997). Other hydrologic factors may affect the stable isotopic signature of precipitation at windward tropical forests. Vogelmann (1973) showed that evapotranspiration in a cloud forest of eastern Mexico was subsequently recycled as fog precipitation, which could affect its isotopic content. This process of fog interception was quantified in a cloud forest of Puerto Rico (Holwerda *et al.*, 2010), accounting for about 10% of the total precipitation.

The objective of this study is the isotopic characterization of precipitation on the windward (Atlantic) side of the Sierra Madre Oriental in the State of Veracruz, the most populated part of the State of Veracruz. The main scope of this work is the spatial and temporal isotopic characterization of meteoric waters and their possible relationship with dominant isotopic effects in our study area. Because the isotopic meteoric line varies with region, it was important to determine a local meteoric water line. Local conditions can also be described by the vertical isotopic gradient and the deuterium excess (d_{ex}), which can be used to assess the difference between local conditions in Veracruz compared with to the global meteoric water line $\delta\text{D} = 8 \delta^{18}\text{O} + 10$ (Craig, 1961). In this research, we show the isotopic relationship between $\delta^{18}\text{O}\text{‰}$ and $\delta\text{D}\text{‰}$ measured in the cumulative rainfall as a time series based on samples was collected during six rainy seasons (2007-2012). Importantly we evaluate the isotopic gradient along a topographic transect from sea level to an altitude of over 4000 m. This characterization will increase the understanding of important hydrological processes and will provide a foundation for future hydrological research.

Study area

The 2000 km² study area is located in the central part of the state of Veracruz, Mexico, between 2110000 and 2180000 UTM coordinates north latitude (Figure 1). Its shape is elongated in an orientation northwest to south east (approximately 90 km long) and narrower from northeast to southwest (approximately 20 km wide). It is bounded on the east by the Gulf of Mexico and to the west by the Sierra Madre Oriental. The topographic relief is variable and characterized by two main areas: a lower and flatter area located along the coast, and a higher and steeper area located along the Sierra Madre Oriental (Tejeda *et al.*, 1989; Barradas *et al.*, 2004). The altitudinal gradient is extremely large rising from sea level at the

Port of Veracruz to 4220 masl at the peak of the extinct Cofre de Perote volcano (cross-section A-A' of Figure 1). The isotopic gradient and precipitation patterns in the study area are greatly influenced by this topography.

The climate within the study area varies from "tropical wet-and-dry" (average annual temperature $> 18^{\circ}\text{C}$ and more than 150 mm precipitation during the summer months) at the Port of Veracruz to "humid subtropical" (average temperature $> 10^{\circ}\text{C}$ during the warmest months and more than 1200 mm precipitation during the rainy season) in the Sierra Madre Oriental (<http://geo-mexico.com/?p=9512>). The maximum monthly air temperature ranges from 12°C at Tembladeras to 23°C at the Port of Veracruz (Figure 2). The seasonal variation of temperature at each of the three weather stations oscillates 4, 8 and 6 $^{\circ}\text{C}$ at 3000 masl, 1400 masl, and at sea level, respectively. The primary controls on the climate within the study area are the topography and the atmospheric circulation systems prevailing during the different seasons (Mosiño and Garcia 1973). These result in the occurrence of the rainy season during

the summer and autumn. Although the study area is located in the tropics, precipitation is also affected by extra-tropical (mid-latitude) phenomena. Precipitation data during 1981-2010 from three precipitation stations located along the A-A' transect (Figure 1) at Tembladeras, Xalapa, and the Port of Veracruz (3000 m a.s.l., 1400 m a.s.l., and at sea level, respectively) illustrate the strength of rainy season during the months of May through October. More than 80% of total annual rainfall occurs during these months, (Figure 2). It is also interesting that the monthly amount during the rainy season is similar for both the high-altitude station (Tembladeras) and the low-altitude station (Port of Veracruz). In contrast, precipitation at Xalapa is much less. While rainfall during the months of July and August exceeds 300 mm at both Tembladeras and the Port of Veracruz, precipitation during the same months at Xalapa is less than 200 mm. It is theorized that a local vertical circulation pattern caused by a barometric pressure anomaly causes a microclimate that brings drier air to the Xalapa area during the summer months.

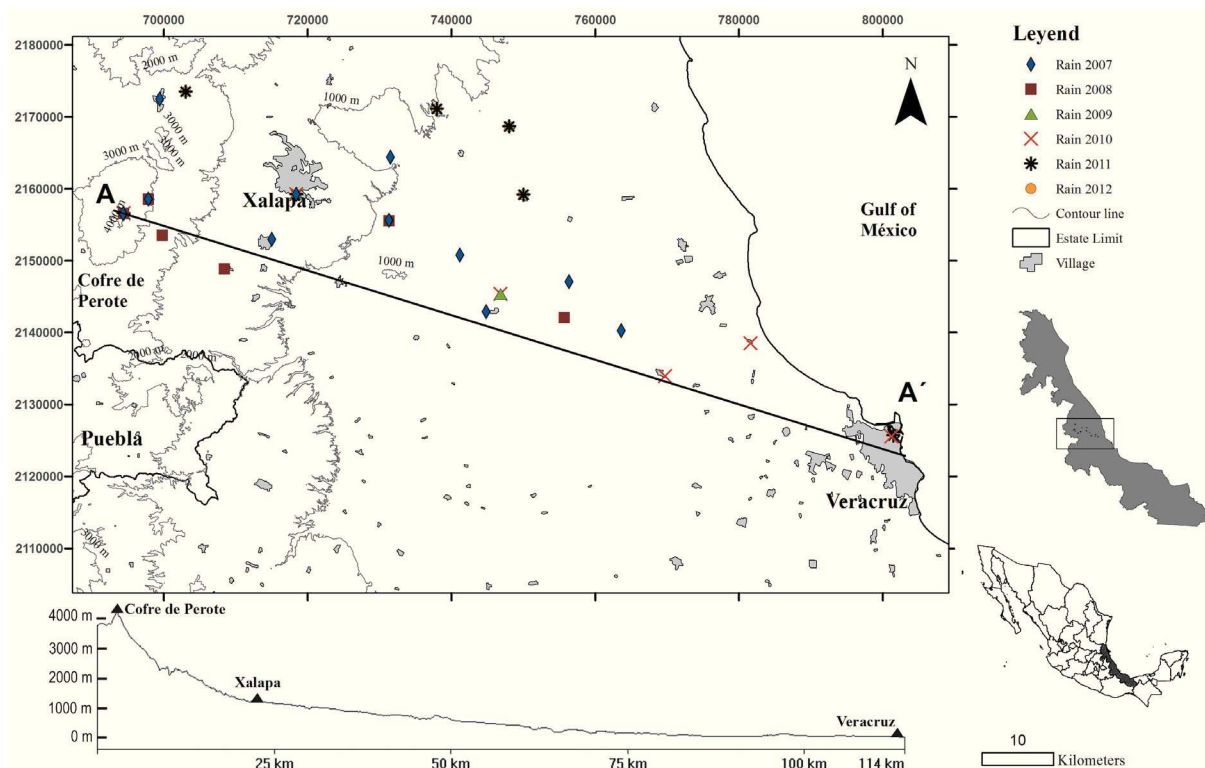


Figure 1. Geophysical map and topographic section of the up wind Sierra Madre Oriental study area from Cofre de Perote (A) to Veracruz (A'); location of precipitation stations shown by black triangles.

There is also a large variability in total annual rainfall within the study area. Total annual rainfall varied from 2076 to 1206 mm at the Veracruz GNIP Station during 1962-1988. It is known that the effects of global phenomena such as El Niño - Southern Oscillation (ENSO; Rasmusson and Wallace, 1983), or La Niña (the negative phase), can result in excess rain in some parts of the state of Veracruz during the summer (Magaña *et al.*, 2003). The Pacific Decadal Oscillation (PDO; Mantua *et al.*, 1997), in its negative phase, can also induce excessive rain in southern portion of the state of Veracruz (Mendez *et al.*, 2010). Lastly, the Atlantic Multidecadal Oscillation (AMO; Sutton and Hodson 2005) can increase the frequency of hurricanes, causing excessive rainfall in the State of Veracruz, (Vazquez, 2007).

The amount and relative $\delta^{18}\text{O}\text{‰}$ isotopic composition of monthly precipitation measured

by the IAEA during 1962-1988 at the Port of Veracruz (Global Network Isotopic Precipitation, 2012) is shown in figure 3. The annual weighted isotopic composition for rainfall calculated by GNIP for the period 1962-1988 (Long Term Mean) is: $\delta^{18}\text{O} = -4.09 \pm 1.31 \text{‰}$, $n = 110$, and $\delta\text{D} = -26.8 \pm 9.7 \text{‰}$, $n = 78$. Separately, we calculated the weighted isotopic composition of rainfall for just the rainy season (May through October) with $\delta^{18}\text{O}\text{‰}$ and $\delta\text{D}\text{‰}$ of -4.2‰ and -24.2‰ , respectively. Because these are not significant differences, it is assumed that the weighted isotopic composition precipitation during the rainy season is representative of the annual rainfall in the study area. Figure 3 shows an inverse relationship between cumulative precipitation and $\delta^{18}\text{O}$ values. Yet during the "canicular days" (July and August), $\delta^{18}\text{O}\text{‰}$ values increased by more than 1‰.

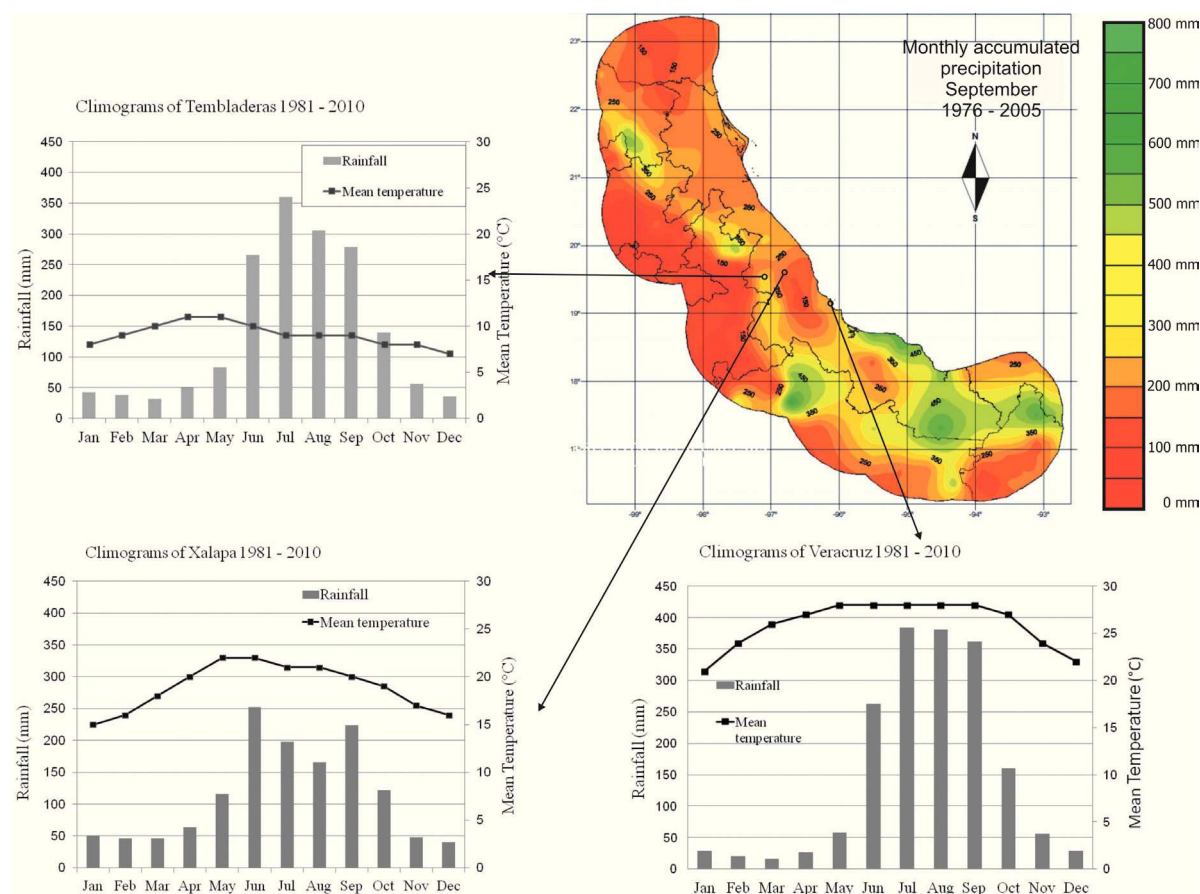
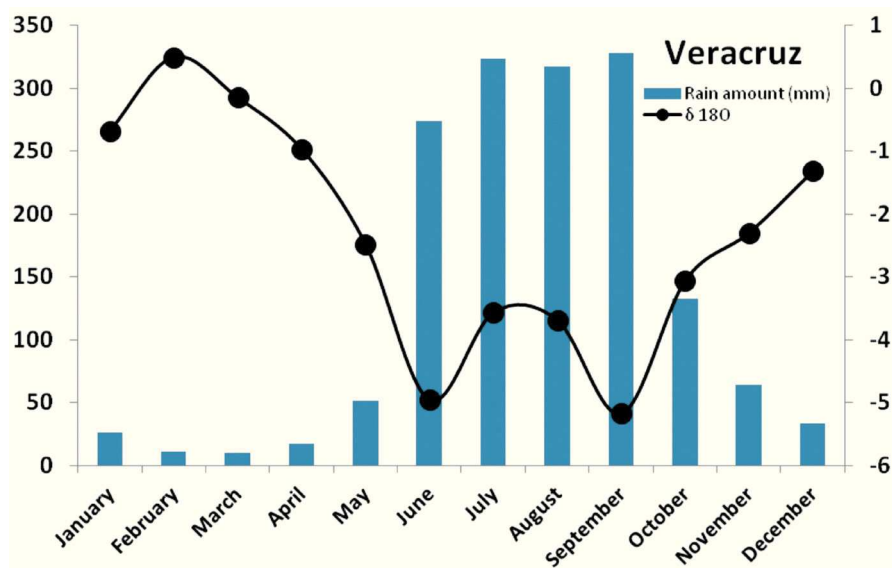


Figure 2. Displays climograms located in the town of Tembladeras, Xalapa and Veracruz, located at 3000 masl., 1400 masl, and sea level, respectively (modified from Tejeda *et al.*, 1989). Precipitation at the Port of Veracruz and at Tembladeras is concentrated in the months of June to September, with magnitudes as large as 350 mm. In contrast, the majority of rainfall in Xalapa is distributed over the months of May to October, with monthly averages less than 250 mm.

Figure 3. Monthly arithmetic average of $\delta^{18}\text{O}\text{‰}$ and monthly precipitation average (mm) accumulated from 1962 to 1988. Source: GNIP, IAEA, http://www-naweb.iaea.org/napc/ih/IHS_resources_gnip.html.



Methodology

To achieve the objectives of this study, a network of temporary rain collectors were deployed along a transect from the Port of Veracruz at sea level to Cofre de Perote at 4220 mamsl. Rainfall was collected during the rainy season for a period of 6 years (2007 through 2012). Composite samples were collected at each site that included all precipitation during each rainy season (May through October). These were collected with a standard rain gauge by taking a composite sample of meteoric water over the entire rainy season. The rain gauge consists of a plastic funnel with a diameter of 40 cm connected to a storage container with sufficient capacity to store up to 5000 mm of precipitation. The container is covered by three heat insulating materials: Poly foam, Mylar, and aluminum foil. 250 ml of inert Nujol mineral oil was added to minimize evaporation (Cortés *et al.*, 2001). At the end of each rainy season, an aliquot of 60 ml of water was collected from each sample container and transferred to high density polyethylene bottles (Nalgen brand).

The sites for the composite rainfall collectors were selected based on proximity to meteorological stations of the National Weather Service of Mexico that record the amount of precipitation. Before the rainy season of 2007, 11 rain gauges were installed at altitudes ranging from 8 masl at Veracruz and Antigua to 4220 masl at Cofre de Perote. These gauges were spatially distributed, as shown in figure 1. Because of logistical problems, the network was modified every year by changing the number and location of the collectors. Seven rain

gauges we installed during the rainy season of 2008, three of which were at the same sites as the previous year. Four gauges were installed during 2009, with three re-occupying previous sites. Eight gauges were installed during 2010, with four re-occupying previous sites. During both 2011 and 2012, gauges were installed at the seven sites (the same locations for both years), with three re-occupying previous sites. Over the 6-year collection period, therefore, a total of 44 collectors were utilized. The estimation of the elevation of the installed rain gauges was recorded with GPS integrated barometric altimeter (Garmin Etrex Summit brand, accuracy of ± 3 m), calibrated at sea level and compared with the topographic maps (1:50,000) published by INEGI (National Institute of Statistics, Geography and Informatics).

The collected rain samples were analyzed for $\delta^{18}\text{O}\text{‰}$ and $\delta\text{D}\text{‰}$ at the Mass Spectrometry Laboratory (MSL) of the Institute of Geology at the National Autonomous University of Mexico (UNAM). The analytical uncertainties (1σ standard deviation) reported by the MSL-UNAM are $\delta^{18}\text{O} \sim \pm 0.1 \text{‰}$ and $\delta\text{D} \sim \pm 1 \text{‰}$. Based on these, the estimated 1σ standard deviation for d_{ex} is $\pm \sqrt{[\sigma(\delta\text{D})]^2 + 64 [\sigma(\delta^{18}\text{O})]^2}$, or $\pm 1.3 \text{‰}$. Replicate isotopic analyses were run for ten percent of samples to verify these analytical uncertainties. The reported values of $\delta^{18}\text{O}\text{‰}$ and $\delta\text{D}\text{‰}$ are normalized to the international standards V-SMOW and SLAP, according to the recommendations of the IAEA, (Gonfiantini, 1978). Composite rainy season stable isotope values of samples collected at the 44 sites during this study were compared

with data from the Port of Veracruz station, which was operated from 1962-1988 jointly by the Global Precipitation Isotopic Network (GPIN) and the International Atomic Energy Agency. The station has a record of 139 isotopic couples ($\delta^{18}\text{O}\text{‰}$ and $\delta\text{D}\text{‰}$), 189 Tritium values, monthly precipitation, mean ambient temperature and vapor pressure (www.iaea.org / water, GNIP).

Results and discussion

Table 1 shows the isotopic results of the meteoric water samples collected during 2007-2012. $\delta^{18}\text{O}$ ranges from - 3.3 ‰ to -15.3 ‰ and δD from -17.2 ‰ to -106.3‰.

Both isotopic ranges are large compared to the respective analytical uncertainties, ± 0.1 ‰ for $\delta^{18}\text{O}$ and ± 1.3 ‰ for δD . The isotopic pairs of $\delta^{18}\text{O}\text{‰}$ and $\delta^2\text{H}\text{‰}$ ranged from -3.3‰ and -17.2‰ at the Port of Veracruz (8 masl) in the rainy season of 2009 to -15.3‰ and -106.3‰ at Cofre de Perote (4200 masl) in the rainy season of 2007. These values are consistent with 2008-2010 precipitation data for Veracruz reported by Goldsmith *et al.* (2011). The deuterium excess values ranges between 7.0‰ and 17.4‰; the highest d_{ex} value was recorded at Cofre de Perote, indicating the largest separation from the LMWL.

Figure 4 shows the isotopic results for the study area, compared with the Global Meteoric Water Line, GMWL (Craig, 1961). Applying a linear regression on these results, the Local Meteoric Water Line (LMWL) for the upwind Sierra Madre Oriental study area is described by the equation $\delta\text{D} = 7.44 \delta^{18}\text{O} + 7.3$. The deuterium excess for the more isotopically depleted samples can be seen by their slight divergence from the GMWL. This LMWL is similar to $\delta\text{D} = 7.42 \delta^{18}\text{O} + 7.9$ for the Port of Veracruz (GNIP, 2014) but differs from another reported for the Coatepec area, also in the State of Veracruz, of $\delta\text{D} = 8.21 \delta^{18}\text{O} + 18.5$ (Goldsmith; 2011). Our LMWL for the upwind Sierra Madre Oriental study area also differs from those reported for other parts of Mexico: $\delta\text{D} = 7.46 \delta^{18}\text{O} + 8.9$ for the Colima Volcano area in the Mexican Pacific (Hartsough *et al.*, 2008); $\delta\text{D} = 8 \delta^{18}\text{O} + 11$ for the central highlands of Mexico (based on data collected during the same years as for the Port of Veracruz; Cortes *et al.*, 1997); and $\delta\text{D} = 7.7 \delta^{18}\text{O} + 10.8$ for the Transmexican Volcanic Belt (which is almost identical to the GMWL). These different LMLs show how the stable isotopic composition of precipitation is strongly influenced by local climatic conditions.

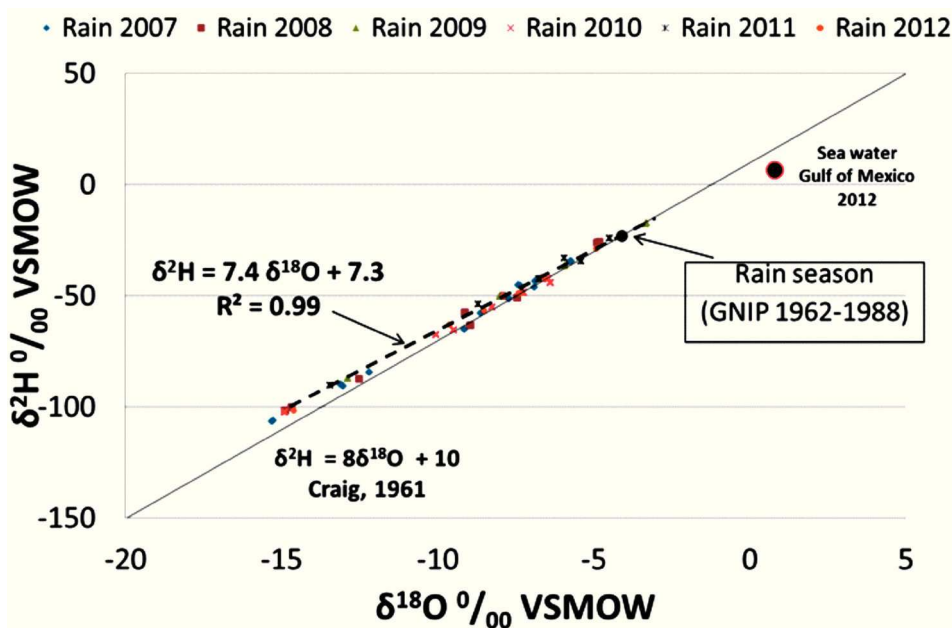


Figure 4. $\delta^{18}\text{O}\text{‰}$ and $\delta^2\text{H}\text{‰}$ of precipitation samples collected 2007 through 2012 and the resulting linear regression (Local Meteoric Water Line, LML) for the upwind Sierra Madre Oriental study area, compared with the Global Meteoric Line (GML).

Table 1. Stable isotope ratios $\delta^{18}\text{O}\text{‰}$ and $\delta\text{D}\text{‰}$ vs V-SMOW of accumulated rainfall in the upwind Sierra Madre Oriental study area, during the rainy seasons from 2007 through 2012.

Name	Altitude (m a.s.l.)	2007			2008			2009			2010			2011			2012		
		$\delta^{18}\text{O}\text{‰}$	$\delta^2\text{H}\text{‰}$	d-excess [‰]	$\delta^{18}\text{O}\text{‰}$	$\delta^2\text{H}\text{‰}$	d-excess [‰]	$\delta^{18}\text{O}\text{‰}$	$\delta^2\text{H}\text{‰}$	d-excess [‰]	$\delta^{18}\text{O}\text{‰}$	$\delta^2\text{H}\text{‰}$	d-excess [‰]	$\delta^{18}\text{O}\text{‰}$	$\delta^2\text{H}\text{‰}$	d-excess [‰]	$\delta^{18}\text{O}\text{‰}$	$\delta^2\text{H}\text{‰}$	d-excess [‰]
Cofre de Perote	4220	-15.3	-106.3	15.9	-14.9	-101.5	17.4	-12.9	-87.2	15.7	-14.9	-102.3	16.8	-13.4	-90.2	17.4	-14.6	-101.8	15.2
Tembladeras	3081	-13	-90.8	13.3	-12.5	-87.5	12.5												
Pocitos	2464				-9.1	-57.7	15.2												
Las Vigas	2442	-12.2	-84.6	13.0															
Loma de Tablas	2275												-8.7	-53.7	15.7	-9.6	-63.2	13.8	
Ixhuacán	1690										-6.4	-44.0	7.0						
Xalapa	1448	-7.3	-45.4	13.4				-8.0	-50.4	13.7	-9.5	-65.4	10.5	-5.9	-33.1	14.4	-7.9	-50.3	13.3
Totutla	1374										-10.1	-67.4	13.0						
Xico	1354				-7.9	-50.4	13.0												
Coatepec	1189	-6.9	-43.5	11.5															
Alto Lucero	1078												-7.3	-47.4	11.1	-8.5	-56.9	10.7	
Dos Ríos	950	-8.6	-57.9	11.0	-9	-63.5	8.1												
Loma de Rogel	710	-9.2	-65	8.2															
La Reforma	691												-6.7	-42.2	11.7	-7.3	-48.9	9.8	
Cerro Gordo	601	-7.7	-51.3	10.4															
Carrizal	441	-6.9	-46.3	8.8															
La Cumbre	375							-5.9	-36.5	10.9	-8.2	-55.1	10.9						
Actopan	268												-5.4	-34.3	8.9	-7.4	-48.9	10.1	
Rinconada	263				-7.5	-51.1	8.5												
Buena Vista	199	-6.8	-42.5	11.6															
Tamarindo	140	-5.7	-34.3	11.6															
Paso de Ovejas	30										-6.6	-42.1	10.7						
Veracruz	8				-4.8	-25.7	12.9	-3.3	-17.2	9.3	-6.5	-42.5	9.4	-4.5	-24.0	12.0	-4.9	-28.9	10.1
La Antigua	8										-7.3	-48.6	9.5						

The vertical isotopic gradient of precipitation along transect A-A' (figure 1) of the study area was determined least squares linear regression of $\delta^{18}\text{O}$ versus altitude for meteoric water samples collected during 2007-2012, yielding the relation $\delta^{18}\text{O} = -2.1 \cdot Z \text{ (km)} - 5.56\text{‰}$; $r^2 = 0.87$ (Figure 5a). The same vertical gradient was also found for precipitation in the Central Mexican Plateau (Durazo, 2008; Cortés and Durazo, 2001), but with a smaller y intercept value -3.26‰ . A similar vertical isotopic gradient was calculated for deuterium: $\delta\text{D} = -15.3 \cdot Z \text{ (km)} - 34.5$; $r^2 = 0.83$. In addition, an abrupt enrichment in $\delta^{18}\text{O}$ and δD occurs at altitudes between 1,000 to 1,400 meters in the study area. This is may be caused by local topographic condition and/or an isotopic shift caused by tropical storms. But because this anomaly is located in an area with frequent fog, it may instead be caused by condensation

processes under equilibrium isotope exchange (Gonfiantini *et al.*, 2001). A third possible cause is plant evapotranspiration which, in tropical areas, may form mists and clouds that are isotopically depleted.

The temporal isotopic variation at 3 sites located at different altitudes (Veracruz, Xalapa and Cofre de Perote) shows that during years characterized by heavy rainfall, the isotope composition is lighter (figure 6). This is particularly evident during 2010, the wettest year of the 6 year study due to a large number of storms in the Atlantic Ocean (five hurricanes, 13 tropical storms and one tropical depression; CONAGUA, 2012). This correlation between precipitation and isotopic depletion may be caused by cloud formation higher in the atmosphere during larger storms (Dansgaard, 1964).

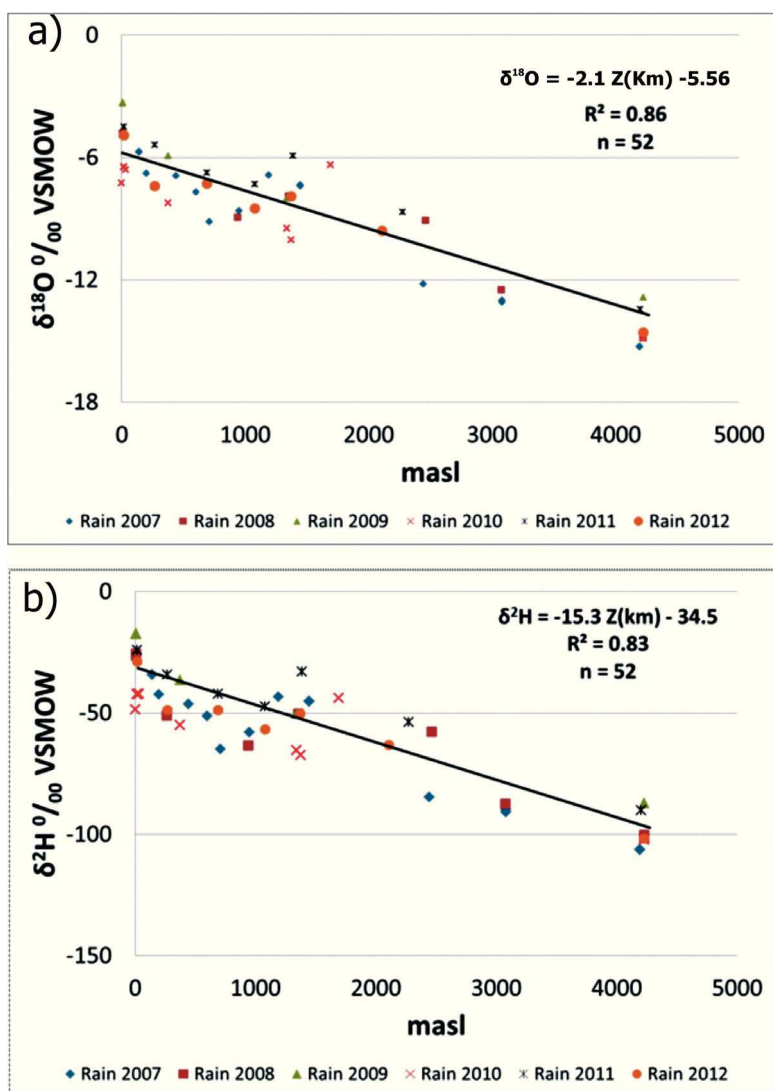
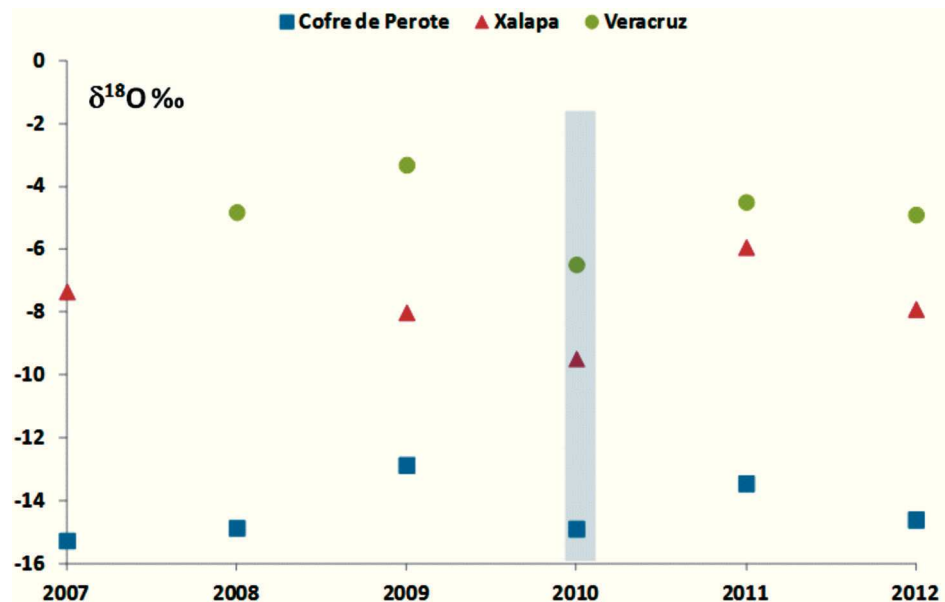


Figure 5. Vertical isotopic gradient of (a) $\delta^{18}\text{O}\text{‰}$ and (b) δD during the rainy season.

Figure 6. Temporal behavior of $\delta^{18}\text{O}\text{‰}$, for meteoric water samples from 2007 to 2012, at three different altitudes: Veracruz, Xalapa, and Cofre de Perote at 8, 1448 and 4220 masl, respectively.



Concluding Remarks

The stable isotope composition of rainy season precipitation has been characterized for the windward (Atlantic) side of the Sierra Madre Oriental, located on eastern flank of the Mexican Volcanic Belt in the State of Veracruz. The cumulative rainfall during the rainy season from May to October accounts for over the 80% of the total annual rainfall in the study area. Average isotopic values were measured in 44 cumulative precipitation samples collected during the rainy seasons of 2007 through 2012 collected at altitudes ranging from 8 to 4220 masl. The results are comparable with previously reported annual weighted averages for the Port of Veracruz (GNIP, 2012), supporting the methodology of focusing only on sample collection during the rainy season. A local meteoric water line of $\delta\text{D} = 7.44 \delta^{18}\text{O} + 7.3$ was determined from these isotopic results. In addition, calculated vertical isotopic gradients for $\delta^{18}\text{O}$ and δD are -2.1‰ km^{-1} and -15.3‰ km^{-1} respectively. These gradients are consistent with previously reported gradients in Veracruz and at similar latitudes elsewhere in central Mexico. A mid-altitude isotopic anomaly near Xalapa, however, indicates that this isotopic gradient may cause an under estimation or over estimation of the calculated altitude of precipitation in particular cases, depending on local orographic precipitation and/or extreme weather conditions. The results of this study can be utilized to improve the understanding of groundwater recharge processes. In particular, this information can be used to evaluate the source altitude of precipitation recharging aquifers in this part of eastern Mexico.

Acknowledgment

The authors thank the Professors Pedro Morales Puente and Edith Cienfuegos Alvarado for providing high quality isotope data and comments on the scope of this research. We also thank the Professor Jaime Durazo Lozano, who before his retirement provided important feedback to help consolidate this work. Also, thanks to the Professors Adalberto Tejeda Martínez and Agustín Pérez Sesma of the Licenciatura en Ciencias Atmosféricas of the Universidad Veracruzana for their constructive comments. Special thanks to all the students and people from different communities who participated in the placement and sampling of precipitation collectors.

References

- Barradas V.L., Cervantes J., Puchet C., 2004, Evidencia de un cambio climático en la región de las grandes montañas del Estado de Veracruz, México. En García Codrón, J. C., C. Diego Liaño, P. Fernández de Arróyabe, C. Garmendia y D. Rasilla (editores). *El Clima entre el Mar y la Montaña*. Pp. 213-219. Publicaciones de la Asociación Española de Climatología (AEC) Serie A, No. 4. Universidad de Cantabria, Santander, España. ISBN:84-8102-384-1.; D.L.:SA-1453-2004
- Clark I., Fritz P., 1997, *Isotopes in hydrogeology*. Lewis. Boca Raton.
- CONAGUA. 2012. *Análisis de las temporadas de huracanes de los años 2009, 2010 y 2011 en México*. ISBN: 978-607-8246-30-4.

- Cortés A., Durazo J., Farvolden R.N., 1997, Studies of isotopic hydrology of the basin of Mexico and vicinity: annotated bibliography and interpretation. *Journal of Hydrology* 198, 1-4, 346-376.
- Cortés A., Durazo J., 2001, Tendencia del Oxígeno-18 en la precipitación del centro de México. *Ingeniería Hidráulica en México*. XIV, 2 pp. 93-102.
- Craig H., 1961, Isotopic variations in meteoric waters. *Science*, 133: 1702-1703.
- Dansgaard W., 1964, Stable isotopes in precipitation. *Tellus*, 16, 438-468.
- Durazo J., 2008, Modern precipitation in central Mexico and its hydrological manifestations in the valley of Toluca. Reportes Internos 2008-5 del Instituto de Geofísica. Universidad Nacional Autónoma de México. México, D. F.
- Goldsmith G., 2011, Stable isotopes reveal linkages among ecohydrological processes in a seasonally dry tropical montane cloud forest. *Ecohydrology*. DOI:10.1002/eco.268.
- Gonfiantini R., 1978, Standards for Stable Isotope Measurements in Natural Compounds. *Nature*, 271. 5645.
- Gonfiantini R., Roche M.A., Olivry J.C., Fontes J.C., Zuppi G.M., 2001, The altitude effect on the isotopic composition of tropical rains. *Chemical Geology*, 181, 147-167.
- Hartsough P., Poulson S.R., Bondi F., Galindo-Estrada I., 2008, Stable isotope characterization of the ecohydrological cycle at a tropical treeline site. *Artic, Antartic. and Alpine Research*, 40, 2, 343-354.
- Holwerda F., Bruijnzeel L.A., Oord A.L., Scatena F.N., 2010, Fog interception in a Puerto Rican elfin cloud forest: a wet-canopy water budget approach. In *Tropical Montane Cloud Forests*, Science for Conservation and Management, Chapter 29 in Bruijnzeel L.A., pp. 282-292.
- International Atomic Energy Agency, 2005. Isotopes in the water cycle. Past, present and future of a developing science. *Springer*, 381 p.
- Magaña V., Vazquez J.L., Pérez J.L., Pérez J.V., 2003, Impact of El Niño on precipitation in Mexico, *Geofísica Internacional*, 42, 313-330.
- Mantua N.J., Hare S.R., Zhang Y., Wallace J.M., Francis R.C., 1997, A Pacific decadal climate oscillation with impacts on salmon. *Bulletin of the American Meteorological Society*, 78, 1069-1079.
- Méndez González J., Ramírez Leyva A., Cornejo Oviedo A., Zárate Lupercio A., Cabazos Pérez T., 2010, Teleconexiones de la Oscilación Decadal del Pacífico (PDO) a la precipitación y temperatura en México, en *Investigaciones Geográficas*, 73, pp. 28 - 79.
- Mosiño P., García E., 1973, The climate of Mexico, in *Climates of North America*. R.A. Bryson and F.K. Hare (editores), Elsevier. Países Bajos.
- Rasmusson E., Wallace M., 1983, Meteorological Aspects of the El Niño/Southern Oscillation, *Science*, 16, pp. 1195 -1202.
- Rosanski K., Araguás-Araguás L., Gonfiantini R., 1993, Isotopic patterns in modern global precipitation. In: *Continental Isotope Indicators of Climate*, American Geophysical Union Monograph.
- Sutton R., Hodson D., 2005, Atlantic Ocean Forcing of North American and European Summer Climate", *Science*, 1, pp. 115 - 117.
- Tejeda A., Acevedo F., Jáuregui E., 1989, *Atlas Climático del Estado de Veracruz*. Colección Textos Universitarios. Universidad Veracruzana. 150 pp.
- Vázquez Aguirre J.L., 2007, *Variabilidad de la precipitación en la República Mexicana*, Tesis de Maestría en Física de la Atmósfera, UNAM, 110 pp.
- Vogelmann H.W., 1973, Fog precipitation in the cloud forest of eastern Mexico. *BioScience* 23, 2, 96-100.
- Yurtsever Y., Gat J., 1981, Atmospheric waters. Stable Isotope Hydrology: Deuterium and Oxygen-18 in the Water Cycle. (J.R. Gat, R. Gonfiantini, Eds) Technical Reports Series 210, IAEA, Vienna, 103-142