



REVISTA MÉDICA DEL
HOSPITAL GENERAL
DE MÉXICO

www.elsevier.es/hgmx



ORIGINAL ARTICLE

Epidemiological surveillance of meningeal and encephalic syndrome in the Mexican Social Security Institute, 2012–2014



D.A. Cabrera-Gaytán^{a,*}, G.F. Pérez-Pérez^b, L. Arriaga-Nieto^c, A. Vallejos-Parás^d, R. Padilla-Velázquez^b, C. Grajales-Muñiz^e

^a Surgeon specialising in Epidemiology and Professor of Hospital Administration and Public Health, Epidemiological Surveillance Management, Mexican Social Security Institute, Mexico City, Mexico

^b Surgeon specialising in Epidemiology, Epidemiological Surveillance Management, Mexican Social Security Institute, Mexico City, Mexico

^c Surgeon specialising in Epidemiology and Professor of Public Health, Epidemiological Surveillance Management, Mexican Social Security Institute, Mexico City, Mexico

^d Surgeon specialising in Epidemiology and Professor of Sciences, Epidemiological Surveillance Management, Mexican Social Security Institute, Mexico City, Mexico

^e Surgeon and Professor of Public Health, Epidemiological Surveillance Management, Mexican Social Security Institute, Mexico City, Mexico

Received 4 March 2016; accepted 30 June 2016

Available online 12 August 2016

KEYWORDS

Meningitis;
Meningococcal
disease;
Neisseria meningitidis;
Epidemiological
surveillance

Abstract

Objective: To describe the incidence, clinical characteristics and laboratory findings of meningitis and cephalic disorder from 2012 to 2014 at the Mexican Social Security Institute (MSSI).

Material and methods: Descriptive analysis of the epidemiological surveillance system for meningococcal disease. A univariate analysis was performed to measure the main trends and dispersion. The Wilson test was used to calculate 95% confidence intervals for proportions and a Kaplan–Meier analysis for survival.

Results: 113 probable cases of meningococcal disease. Cases with a positive result for meningococcus had an overall crude incidence rate of 0.02 cases per 100,000 social security beneficiaries. The disease is predominant in winter. The clinical symptoms in adults differ from those in children. In all, 20 deaths were reported, with an overall mortality rate of 17.7% and a rate of 20% for meningitis cases. The estimated mean survival time was 61.6 days (95% CI,

* Corresponding author at: Coordinación de Vigilancia Epidemiológica, Instituto Mexicano del Seguro Social, Mier y Pesado No. 120, primer piso, Colonia del Valle, Benito Juárez, C.P. 03100 Mexico City, Mexico. Tel.: +52 5536 8861.

E-mail addresses: david.cabrerag@imss.gob.mx, dcpreventiva@gmail.com (D.A. Cabrera-Gaytán).

45.08, 75.18). The probability of surviving meningitis 2 days after the onset of symptoms was 0.944; after 20 days, it was 0.758 and after 87 days it was 0.427. Survival models were used, stratified by sex and age, with no statistically significant differences.

Conclusions: Epidemiological surveillance needs to be strengthened in terms of coverage between districts and timely reporting, with health personnel involved.

© 2016 Sociedad Médica del Hospital General de México. Published by Masson Doyma México S.A. This is an open access article under the CC BY-NC-ND license (<http://creativecommons.org/licenses/by-nc-nd/4.0/>).

PALABRAS CLAVE

Meningitis;
Enfermedad
meningococica;
*Neisseria
meningitidis*;
Vigilancia
epidemiológica

Vigilancia epidemiológica del síndrome meníngeo y encefálico en el Instituto Mexicano del Seguro Social, 2012–2014

Resumen

Objetivo: Describir la incidencia, características clínicas y hallazgos por laboratorio del síndrome de meningitis y encefálico de 2012 a 2014 en el IMSS.

Material y métodos: Análisis descriptivo del sistema de vigilancia epidemiológica de enfermedad meningococica. Se realizó análisis univariado con medidas de tendencia central y de dispersión. Se realizó prueba de Wilson para el cálculo de intervalos de confianza al 95% para proporciones y un análisis de sobrevida de Kaplan Meier.

Resultados: 113 casos probables de enfermedad meningococica. Los casos con resultado positivo a meningococo, presentaron una tasa de incidencia cruda general de 0.02 casos por 100,000 derechohabientes. El comportamiento de la enfermedad predominó en invierno. El cuadro clínico entre adultos y niños fue diferente. Se reportaron 20 defunciones con una tasa de letalidad general 17.7% y 20% para casos por meningococo. El tiempo medio estimado de sobrevida fue de 61.6 días (IC95% 45.08, 75.18). La probabilidad de sobrevivir a la meningitis a los dos días fue de 0.944, a los 20 días de iniciado el cuadro clínico fue de 0.758, y a 87 los días fue de 0.427. Se realizaron modelos de supervivencia estratificados por sexo y edad, sin encontrar significancia estadística.

Conclusiones: Es necesario reforzar la vigilancia epidemiológica en cobertura entre las Delegaciones y la oportunidad en la notificación, con involucramiento de todo el personal de salud.

© 2016 Sociedad Médica del Hospital General de México. Publicado por Masson Doyma México S.A. Este es un artículo Open Access bajo la licencia CC BY-NC-ND (<http://creativecommons.org/licenses/by-nc-nd/4.0/>).

Introduction

Despite advances in diagnostic techniques and chemotherapy, bacterial meningitis has been a neurological emergency with a high mortality rate.^{1–3} The World Health Organization (WHO) considers bacterial meningitis to be a serious threat to health, with an estimated 171,000 deaths per year worldwide. Major outbreaks of this condition have been documented in the “meningitis belt” of sub-Saharan Africa.³

Optimal treatment depends on immediate treatment with the most appropriate antibiotic,^{4,5} but the data are limited regarding the epidemiological surveillance of meningitis. In this regard, epidemiological surveillance of meningitis is critical, owing to the wide range of aetiological agents. Outbreaks of meningitis have been identified in schools,⁶ prisons,⁷ and the community.^{8–10} In our country, meningitis is reported weekly through the Epidemiological Surveillance Single Information System (SUIVE)^{11,12}; if meningococcal meningitis, invasive pneumococcal disease, invasive infection caused by *Haemophilus influenzae*, tuberculosis, human rabies, vector-borne disease or free-living

amoebae infection are suspected, reporting is done immediately, and each disease must have a special surveillance system.^{13–15}

In 2010, an outbreak of meningococcal meningitis in Mexico City and the metropolitan area was studied¹⁶; the outbreak started at the Social Rehabilitation Centre – North.⁷ From 2010 onward, special epidemiological surveillance of meningococcal meningitis has been implemented, and an epidemiological study was designed with a form for reporting cases of this disease. This study was endorsed by the establishments that make up the health sector within the National Epidemiological Surveillance Committee. It was modified in 2014.

The MSSI carries out meningitis reporting according to each of these specific guidelines for epidemiological surveillance; in this way probable and confirmed cases of meningococcal disease are studied and reported and, based on this, other aetiologies have been identified. In this document, the incidence, clinical characteristics and laboratory findings from cerebrospinal fluid (CSF) samples are described and analysed, over a period from 2012 to 2014, at the MSSI.

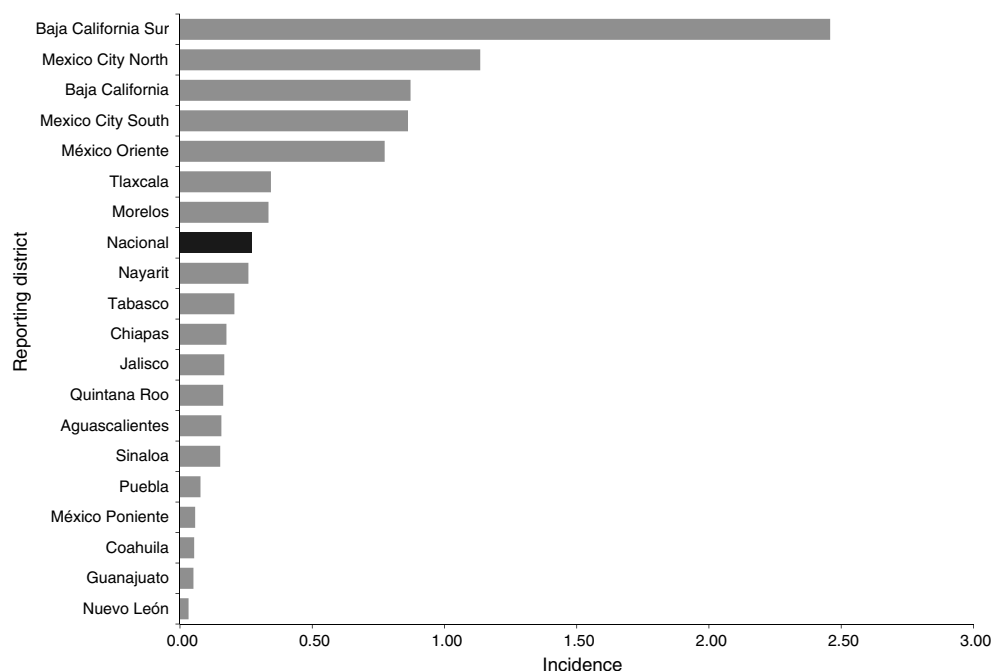


Chart 1 Incidence of probable cases of meningococcal disease by district, 2012–2014 ($n = 113$).

Materials and methods

A descriptive analysis was performed using the variables in the epidemiological studies of reported and studied cases of probable meningococcal disease, from 2012 to 2014, in social security beneficiaries with the MSSI.

A case was considered to be probable if the patient had a fever and two or more of the following signs or symptoms: (a) meningeal disorders: bulging fontanelle (<1 year), stiff neck, Kernig's sign, Brudzinski's sign, lumbar pain or photophobia; (b) cephalic disorders: irritability, disorientation, confusion, sleepiness, drowsiness, stupor, coma, apathy, aggressiveness, headache, slurred speech, cranial nerve palsies or convulsions; (c) suggestive CSF results: increased pressure, turbidity, elevated cellularity, low CSF glucose level, elevated protein, polymorphonuclear pleocytosis. In infants simply a fever/hypothermia with refusal to feed and irritability/lethargy were suggestive. A confirmed case was any probable case in which the presence of *Neisseria meningitidis* was identified according to the confirmation criteria established at the laboratory; or in the absence of a diagnostic test, association with a confirmed case.¹⁶

A descriptive analysis of demographic variables, level of medical care, clinical manifestations, laboratory parameters, treatments and outcome was performed. Incidence rates were calculated per 100,000 social security beneficiaries who saw their GP; in general, the population mean during the period was considered halfway through each year. General and specific crude incidence rates were calculated by age group and by state. The descriptive analysis, with a univariate determination of rates, ratios and proportions, was done in Excel. The Wilson test was used to calculate 95% confidence intervals for proportions in Open-Epi. In addition, a Kaplan–Meier analysis for survival was used. Follow-up time was calculated in days, with subtraction between the

date of hospital discharge and the date of the onset of symptoms (patients with none of these data were excluded); this was performed in Stata.

Results

Epidemiological situation during the period

Between 2012 and 2014, 113 probable cases of meningococcal disease were reported: 35 in 2012, 30 in 2013 and 48 in 2014. The overall crude incidence during the period was 0.27 cases per 100,000 social security beneficiaries who saw their GP. The crude incidence showed an upward trend. This disease was reported in 19 states (Chart 1).

Distribution by age and sex

In total, 72 cases in men and 41 in women were reported, and the age range was from 2 days to 66 years. The ratio of men to women was 1:1.8. In all, 47.8% (95% CI, 38.8, 56.92, $p = 0.6381$) of the cases were in children under 10. In most of the age groups, men made up the majority, except for the ages from 45 to 54 and from 65 to 69. Children under one year of age were the most affected, with 3.20 cases per 100,000 social security beneficiaries, followed by the population from 1 to 4 years of age, with 0.72 cases. In each year, those most affected were children under one year of age.

Cases with a positive result for meningococcus in this period showed a general crude incidence rate of 0.02 cases per 100,000 social security beneficiaries, and this was an upward trend between 2012 and 2013. No cases of meningococcus were identified by the laboratory in 2014. Those most affected were between the ages of 15 and 19, with 0.16

cases per 100,000 social security beneficiaries. The median age for confirmed cases of meningococcus was 13.5 years (ranging from 5 to 47).

Behaviour and season

Cases were reported year-round. In the last three years, the disease was predominant in winter, with more cases between November and January.

Level of medical care

Throughout the period, 78 cases were reported in secondary care hospitals (69.0%, 95% CI, 59.99, 76.81, $p < 0.0001$) and 31.0% (95% CI, 23.19, 40.01, $p < 0.0001$) in highly specialised care units (UMAE).

Initial assessment

Generally, the initial diagnosis in 69% (95% CI, 60.92, 77.6, $p < 0.0001$) was meningitis of an aetiology to be determined, followed by viral encephalitis. The average number of days till seeking medical care was four (ranging from 0 to 32; median of two days). Two outliers were excluded, as well as one for which the date of onset was not known.

Clinical manifestations

Amongst all cases the main sign was fever. However, in characterising the clinical manifestations in children under one year of age, convulsions predominated, whereas, amongst all cases, convulsions occurred in half (Table 1). In describing the clinical symptoms of confirmed cases of meningococcal disease ($n = 10$), the main symptoms were headache, fever and sudden malaise (Chart 2).

Comorbidities

Of the 113 reported cases, 57 of them had no underlying condition (50%), while in 43 it was not known (39%); 13 had a comorbidity (11%). The most common comorbidity was hypertension (4), followed by diabetes mellitus (3). As regards the hypertension, three of the cases were women and one a man, with an average age of 51; while in the case of diabetes, two of the cases were women, aged 15 and 66, and one an 18-year-old man.

Treatment

Treatment was with antibiotics, antifungals and antivirals, mainly in double and triple regimens and with combinations of vancomycin, ceftriaxone and cefotaxime. In total, 24 patients were prescribed monotherapy, especially with ceftriaxone. Acyclovir was prescribed to 17 patients, and prescribed as monotherapy in five patients. All those treated with fluconazole were also given at least one antibiotic.

The average time between the onset of drug therapy and the onset of symptoms ($n = 109$) was six days (ranging from 0 to 64 days; median of three days); while from the first

Table 1 Clinical manifestations of probable cases of meningococcal disease, 2012–2014.

Sign or symptom	Frequency	%
<i>General (n = 113)</i>		
Fever > 38 °C	89	78.8
Headache	73	64.6
Sudden malaise	71	62.8
Altered state of alertness	69	61.1
Prostration	63	55.8
Lethargy	62	54.9
Convulsions	58	51.3
Speech disorders	52	46.0
Stiff neck	50	44.2
Vomiting	44	38.9
Nausea	40	35.4
Signs of shock	23	20.4
Brudzinski's sign	21	18.6
Kernig's sign	18	15.9
Cranial nerve palsies	18	15.9
Signs of bleeding	17	15.0
Light sensitivity	14	12.4
<i>Under 1 year of age (n = 17)</i>		
Convulsions	16	94.1
Fever > 38 °C	14	82.4
Sudden malaise	10	58.8
Prostration	9	52.9
Stiff neck	7	41.2
Lethargy	7	41.2
Altered state of alertness	7	41.2
Vomiting	6	35.3
Refusal of food	5	29.4
Signs of shock	5	29.4
Bulging fontanelle	4	23.5
Irritability < 1 year	4	23.5
Nausea	4	23.5
Headache	4	23.5
Kernig's sign	2	11.8
Brudzinski's sign	2	11.8
Cranial nerve palsies	2	11.8
Light sensitivity	1	5.9
Signs of bleeding	0	0.0

contact with health services to prescription ($n = 111$), the average was two days (ranging from 0 to 22; median of zero days).

Additional findings from the laboratory diagnoses

Of the 113 cases, 93 of them underwent a lumbar puncture to study the CSF (82.3%, 95% CI, 74.24, 88.24, $p < 0.0001$), the results of which showed turbidity in 47.4% (95% CI, 37.47, 57.36, $p < 0.6041$), transparency in 45.2% (95% CI, 35.44, 55.27, $p < 0.3507$) and blood-count issues in 7.4% (95% CI, 3.694, 14.73, $p < 0.0001$). 39 cases or 41.9% (95% CI, 32.42, 52.09, $p < 0.1198$) showed bacterial growth.

The CSF glucose report was present in 73 cases, with a mean of 47.8 mg/dl, WBC count 58.4% in 44 cases, and the identification and recording of proteins was very

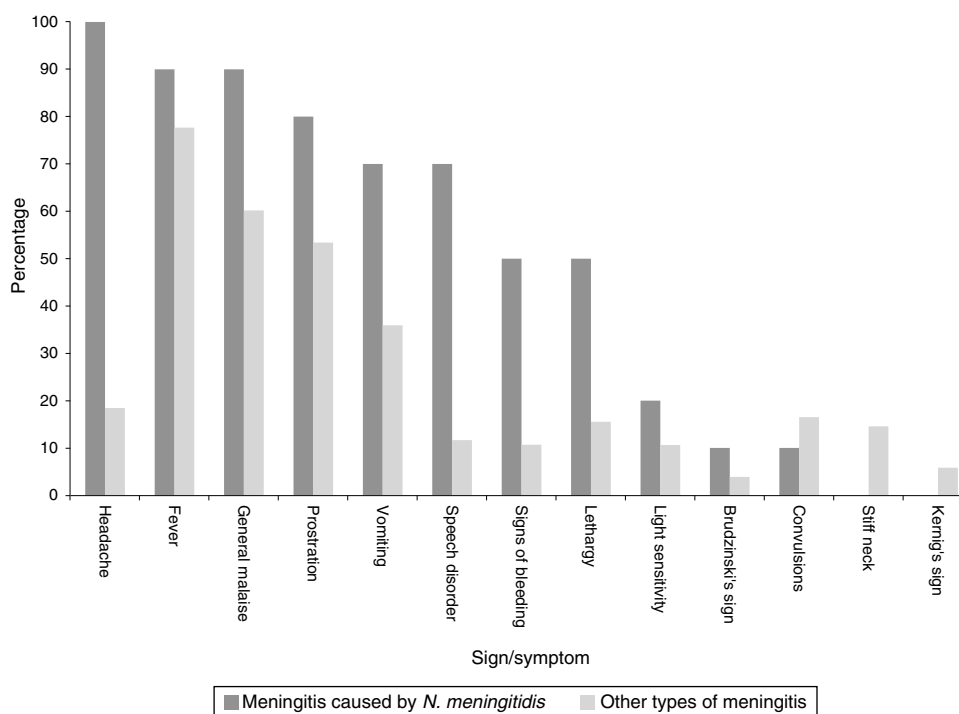


Chart 2 Percentage distribution of clinical symptoms of probable and confirmed cases of meningococcal disease, 2012–2014.

inconsistent. In that sense, in cases in which meningococcus was identified, the mean percentage of WBCs was 91.2% (ranging from 80 to 99; median of 92.5), while glucose was 18.6 mg/dl (ranging from 2 to 37; median of 20).

According to the Gram stain, 11 were Gram-positive and 18, Gram-negative. By grouping by bacteria only, the main agent was *N. meningitidis* with 33.3%, followed by *Streptococcus pneumoniae* with 16.7%. It should be noted that on identifying *N. meningitidis*, five were type C; two, type A; and three, not determined.

In 96 cases the date of the puncture and CSF sample was recorded; of these, 67 of the cases first had a lumbar puncture and then started antibiotics, ranging from 0 to 11 days. In 18 cases the report showed no bacterial growth, where the average time between the puncture and the start of treatment was 15 h (SD = 2.16), whereas for those showing bacterial growth it was 20 h on average (ranging from 0 to 11 days, SD = 2.23). To identify meningococcus, only in one case was the drug prescribed first and then the lumbar puncture performed, with an interval of two days. The rest of the cases were done in the reverse order (seven on the same day).

Reason for hospital discharge

In all, 91 cases indicated the reason for hospital discharge, amounting to an average hospital stay of 16 days (ranging 0 to 93; median of 11 days). Most were discharged due to improvement (67%, 95% CI, 56.86, 75.83, $p < 0.0011$) or due to death (21.9%, 95% CI, 14.7, 31.52, $p < 0.0001$).

On including the agents identified by the lab and the clinical diagnostic tests ($n = 38$), the aetiology was classed as follows: 10 cases caused by meningococcus (26.3%); five

each by *S. pneumoniae* (13.2%) and varicella, group B *Streptococcus* and herpes; two each by *Acinetobacter baumannii* and *Staphylococcus aureus* (5.3%). The other agents were classed and/or identified in only one patient.

Chemoprophylaxis

Chemoprophylaxis for contacts was given in 20 cases with ciprofloxacin or rifampicin. In nine of these cases, meningococcus was identified by the lab, and in another two, other bacterial agents were found. In the rest of the cases, the agent was not identified. Broken down by initial diagnostic test, meningococcal meningitis was recorded in five cases; in three of these chemoprophylaxis was performed.

Deaths

Throughout the period, 20 deaths were recorded: five in 2012, seven in 2013 and eight in 2014. The average age of those who died was 25.5 years (ranging from 1 month to 64 years), with hospital care requested within two days (ranging from 0 to 10; median of one day), and the start of antibiotic treatment was four days on average from the onset of symptoms (ranging from 0 to 13; median of two days). Those who died had on average 16 days of symptoms (ranging from 1 to 65; median of 13 days, with one outlier excluded).

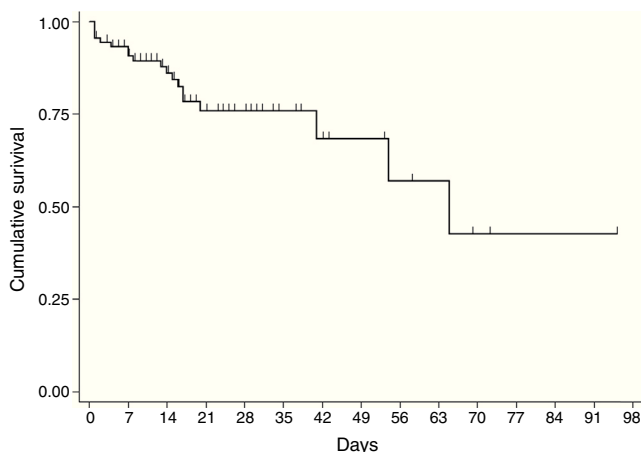
The bacteria were isolated in seven of these cases, with the main aetiological agent being type C *N. meningitidis*, and *S. pneumoniae*, *Cryptococcus neoformans*, *Staphylococcus haemolyticus*, *St. aureus* and *A. baumannii* also isolated.

The general three-year crude mortality rate was 0.05 deaths per 100,000 social security beneficiaries who saw

Table 2 Deaths and mortality rate of probable cases of meningococcal disease by age group, 2012–2014.

Age group	Deaths	Cases	Rate
<1	1	17	5.88
1–4	4	20	20.00
5–9	2	17	11.76
10–14	1	10	10.00
15–19	3	7	42.86
20–24	0	2	0.00
25–29	1	3	33.33
30–34	1	7	14.29
35–39	1	5	20.00
40–44	1	6	16.67
45–49	1	7	14.29
50–54	1	5	20.00
55–59	1	3	33.33
60–64	2	3	66.67
65–69	0	1	0.00
Total	20	113	17.70

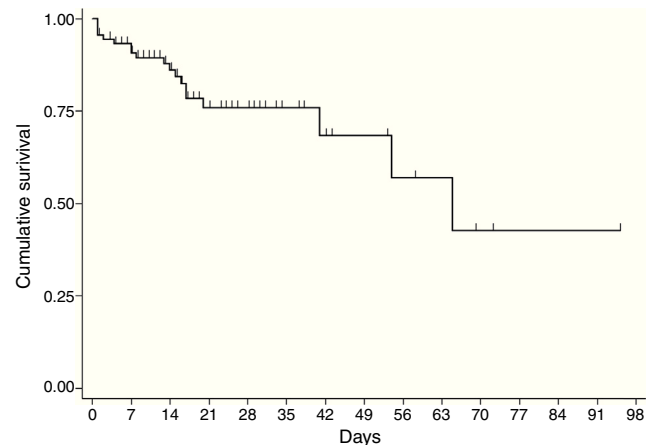
Population in June 2013, Division of Health Information.

**Chart 3** Kaplan–Meier survival curve for meningitis, 2012–2014.

their GP, whereas for confirmed cases of meningococcus it was 0.005 deaths. In children under one year of age, a crude mortality rate of 0.19 was recorded for the period.

The mortality rate for the entire period was 17.7% (95% CI, 11.76, 25.76, $p < 0.0001$), whereas for the cases in which meningococcus was identified it was 20.0% (95% CI, 5.669, 50.98, $p < 0.0577$). The mortality rate varied: 14.3 (95% CI, 6.261, 29.37, $p < 0.0001$) in 2012, 23.3 (95% CI, 11.79, 40.93, $p < 0.0034$) in 2013 and 16.7 (95% CI, 8.696, 29.58, $p < 0.0001$) in 2014. By age group, of the total number of cases, the highest mortality rate was seen in those aged 60–64 (Table 2).

For the survival analysis, in total, 90 cases were analysed, 19 of whom died (one outlier was excluded); the average estimated time of survival was 61.6 days (95% CI, 45.08, 75.18) and the median, 65 days (95% CI, 41.39, 88.61). The probability of surviving meningitis 2 days after the onset of symptoms was 0.944; after 20 days, it was 0.758 and after 87 days it was 0.427 (Chart 3). Survival models were used, stratified by sex and age, with no statistically significant

**Chart 4** Kaplan–Meier survival curve for meningitis by identified causative agent, 2012–2014.

differences. Using the agent identified, amongst those with meningococcus, compared with the other agents (Chart 4), no statistical difference was found ($p = 0.4975$).

Epidemiological surveillance system

The average number of days in which cases were reported was five (ranging from 0 to 62; median of two days); 47.78% (95% CI, 38.8, 56.92, $p < 0.6381$) were reported within 24 h.

In 2012 the average was five days (ranging from 0 to 46). In all, 46% were reported in a timely manner. The following year, reporting improved, with an average of 24 h (ranging from 0 to 8 days), and in 2014 the average was six days (ranging from 0 to 62), where four in ten cases were reported in a timely manner.

Discussion

The incidence of bacterial meningitis in adults in different countries varies from 1.0 to 7.2 per 100,000 inhabitants.^{17–19} However, the crude incidence rate of meningococcus was very low, lower even than that indicated in the most recent annual report by the European Centre for Disease Prevention and Control (ECDC).²⁰ In Europe, it was a rare condition in 2011, with 0.75 cases per 100,000 inhabitants, with 4,121 reported cases and 3814 confirmed cases, mainly serotype B and C meningococcus.²⁰ In Burkina Faso, in 2012, 5,807 cases of meningitis were reported, 2,352 of which were laboratory-confirmed,²¹ and in the United States, in children under 1 year of age, the meningococcus incidence rate between 2006 and 2012 was 2.74 children.²² In this respect, the number of reported and studied cases, and the crude incidence rate is lower than in these publications, a fact which reflects the capacity for identification and diagnosis of cases, to be studied in an epidemiological surveillance system.

Invasive meningococcal disease in Mexico has been documented to be a common health problem^{23,24}; however, the monitoring of this disease in Mexico is passive, and underreporting is a subject of concern, a situation reflected in this study. In the past two decades, and earlier in this decade, the reporting of cases of meningococcal meningitis var-

ied. From 2001 to 2010, 474 cases were reported, with an average of 47 cases per year, specifically 45 cases in 2011 and 43 cases the following year.^{25,26} For the diagnosis of meningitis (G00-G03, except G00.0 and G01), 732 cases were reported, and in 2013, 895.²⁷

In Europe, babies and children under five years of age have the highest risk of developing the disease, followed by those 15–19 years of age.²⁰ In Mexico, according to information from the Epidemiological Surveillance Single Information System, between 2002 and 2010, the incidence rate was highest in children under 10.²⁸ Similarly, in an outbreak of meningococcal meningitis in Tijuana, Baja California, 73.7% of the cases were in children under 13.²⁹ This shows that the predominance of the disease continued in children, a situation documented in this study, where the child population was the most affected.

According to cases reported through the special system in the past three years, the disease shows a seasonal prevalence in winter, with more cases between November and January. This situation is similar to that recorded in Europe,¹³ as well as in the sector's case series in Mexico.²⁸

Most cases were concentrated in four states, initially in the Baja California Peninsula and centre of the country. Thus the following assumptions can be made: (1) in the Baja California Peninsula an outbreak of this disease occurred in 2012 and 2013, and in addition, this is considered to be an endemic area for meningococcal disease^{29,30}; (2) in the Peninsula there is probably a better understanding in terms of detecting and reporting cases; (3) there may also be other influencing factors, such as the geographic conditions (dry season/wind)²⁹; (4) in Mexico City, 66% of all cases were reported by a UMAE (mainly the Siglo XXI Children's Hospital UMAE), which are major regional and reference centres in other districts. In this sense it is essential to strengthen epidemiological surveillance in children, because half of the reported cases were in children under 14. Furthermore, although the largest number of cases were reported by second-level medical units, particularly Mexico City, there is an indication that the demand for health care was (1) in very advanced stages due to the lack of a timely diagnosis (up to 20 days; on average five days), (2) limitations or deficiencies in the management in second-level care, and (3) additive to a defective culture in education, prevention and health promotion in the population. In addition, HIV results in infectious and parasitic diseases that manifest neurologically, and this is a factor in the leading causes of diseases affecting the nervous system.³¹ Although this condition was not found in this study (only one case was reported with HIV/AIDS as a comorbidity), it is essential to communicate and identify these cases, since the neurological manifestations associated with HIV/AIDS prevailing in industrialising countries are secondary to opportunistic infections.^{32,33}

In a study conducted in Mexico in children under 18, it was found that the characteristics of the clinical symptoms at hospital admission included infectious syndrome (87%) and meningial syndrome (74%),² similar to our study, in which in seven out of every 10 cases the initial diagnosis was meningitis.

Half of the cases of meningococcal meningitis were reported in Baja California between 2012 and 2013. Furthermore, in 2013 an outbreak of serotype C meningococcal

meningitis was reported in Tijuana, Baja California, with 19 cases.²⁹ This year, the cases reported and confirmed by labs in this report correspond to the same serotype reported in Tijuana. The circulation of this serotype has been identified before,³⁴ and so it has been considered endemic to the area,³⁰ exacerbated by the presence of a highly virulent strain (ST-11 clonal complex) detected in Baja California.³¹

The Baja California Peninsula has shown specific determinants in terms of its inhabitants acquiring the disease. Low socio-economic levels prevail in this disease.^{28,29,31} Though not possible to describe this condition in this study, it represents a flashpoint for identifying cases in which medical attention is required. In a seven-year study in a tertiary care hospital specialising in neurology and neurosurgery in Mexico City, the main causes of medical care subject to epidemiological surveillance were acute inflammatory polyneuropathy (19.7%), unspecified viral encephalitis (18.5%) and neurocysticercosis (17.1%)³¹ which reinforces this condition. Moreover, there have been recent outbreaks of this disease in Chile; 75 cases were reported in 2010, 68 in 2011 and 108 in 2012, most of which were type B.³⁵

There are several determinants in the identification of the bacteria, in terms of diagnostic capacity: geographic area, study time and age of the case. For example, the frequency in Hong Kong between 1992 and 2001 differs, where *Mycobacterium tuberculosis* (46%), *S. pneumoniae* (11%), *Streptococcus suis* (9%) and *Klebsiella pneumoniae* (8%) were the most significant, whereas *N. meningitidis* and *H. influenzae* were the rarest.³⁶ Moreover, *K. pneumoniae* was reported as a major causative agent in Taiwan,^{37,38} but not by Hui³⁶ or in this study. In 2012, in Burkina Faso, 62% of meningitis cases were due to serotype W *N. meningitidis*.²¹ In a study conducted in the UK and the Republic of Ireland during 2010–2011, in children under 90 days of age, it was observed that 50% of the cases were due to group B *Streptococcus*, 14% *Escherichia coli*, 9% *S. pneumoniae*, and 8% *N. meningitidis*.³⁹ During 2012–2013, Cuba reported 10 isolated cases of meningitis due to *S. pneumoniae*, which amounted to 55% of confirmed cases⁴⁰; the situation was similar in Colombia in 2011.⁴¹ In Mexico, at Mexico City Children's Hospital, over 21 years of study, it was found that *H. influenzae* was the main bacterium, followed by *S. pneumoniae* with 46 (55.42%) and 15 (18.07%)²; this situation can be contrasted with this report, as 26.3% were due to *N. meningitidis*, followed by *S. pneumoniae*. Apart from these differences, this reveals the need to standardise the pre-testing, testing and post-testing stages in the clinical laboratories of medical units.

Despite significant progress of hospital care, life support and the development of antibiotics, acute meningitis has been a devastating disease with long-lasting effects,⁴² attributed to the host's systemic inflammatory response to the agent. In one systematic review it was observed that the mortality rate in African children hospitalised with acute bacterial meningitis caused by *S. pneumoniae* was 35%, *H. influenzae* 25% and *N. meningitidis* 4%.⁴² This condition also results in various complications, such as ventriculitis, hydrocephalus and brain abscesses. Although one limitation in this study was not having this information, the calculated crude rate was high, if lower than that found in other studies^{36,42}; it was also lower than that reported in the meningococcal

meningitis outbreak in Tijuana, Baja California, which was 36.8%.³¹

Regarding comorbidities, diabetes was present before admission in between 7% and 10% of adult patients with community-acquired bacterial meningitis,^{1,43} and in some this figure was 48.1%⁴⁶ which, contrasted with this study, was lower. These differences may be attributable to (1) the number of cases studied, (2) the fact that most of the cases were in children or (3) inconsistencies in recording the comorbidities of this study. Despite this, however, it is important to note that a large proportion of patients with diabetes mellitus hospitalised for bacterial meningitis have metabolic disorders, and comprehensive care and life support are therefore vital.⁴³

The survival analysis was used mainly to compare treatments and/or interventions,^{45,46} as well as the clinical changes of the microorganisms.^{44,47} Therefore this study provides survival data on this disease based on the cases reported and studied in an epidemiological surveillance system for social security beneficiaries, and this is a rarity in the scientific literature.

The limitations of this study may be attributed to the mixed collection of information due to changes in the format of the epidemiological case study during the study period; likewise, the CSF lab results for cytological, cytochemical and microbiological testing in the analytical and post-analytical stage are heterogeneous in each hospital unit, in which this variable cannot be controlled and that is reflected in the recording of the testing in the epidemiological case study. Lastly, regarding the incomplete recording of the date, reason for hospital discharge (mainly in 2012) and comorbidities, this system is "young", given that it was started in 2010 and is therefore in the process of maturing.

Epidemiological surveillance provides information on specific health problems so that decisions can be made and risks prevented. This work provides an overview of the disease that can guide, deepen or rectify preventive or control-related actions. It is necessary to strengthen epidemiological surveillance in terms of coverage across hospital units and timely reporting, directly involving the healthcare personnel who treat patients.

Ethical disclosures

Protection of human and animal subjects. The authors declare that no experiments were performed on humans or animals for this study.

Confidentiality of data. The authors declare that no patient data appear in this article.

Right to privacy and informed consent. The authors declare that no patient data appear in this article.

Funding

None.

Conflict of interest

The authors declare that they have no conflict of interests.

References

- Durand ML, Calderwood SB, Weber DJ, et al. Acute bacterial meningitis in adults. A review of 493 episodes. *N Engl J Med.* 1993;7:21–8.
- Coria Lorenzo JJ, Rosales Uribe RE, Juárez Escobar M, et al. Meningitis bacteriana: Comportamiento microbiológico en los últimos 21 años en un hospital pediátrico de tercer nivel de atención. *Rev Enfer Infec Pediatr.* 2012;XXV:101–8.
- World Health Organization. Meningococcal meningitis. Fact sheet no. 141; 2012. <http://www.who.int/mediacentre/factsheets/fs141/en/> [accessed 04.03.15].
- Quagliarello VJ, Scheld WM. Drug therapy: treatment of bacterial meningitis in adults. *N Engl J Med.* 1997;336:708–16.
- Short WR, Tunkel AR. Timing of administration of antimicrobial therapy in bacterial meningitis. *Curr Infect Dis Rep.* 2001;3:360–4.
- Bradley K, Smithee L, Clark T, et al. Outbreak of meningococcal disease associated with an elementary school —Oklahoma, March 2010. *MMWR.* 2012;61:217–21.
- Preocupan casos de meningitis a las autoridades sanitarias del DF. Noticias del DF; 2010. Available from: http://www.salud.df.gob.mx/ssdf/index.php?option=com_content&task=view&id=4231 [accessed 01.01.15].
- Pettit E, Kropski J, Castilho J, et al. The index case for the fungal meningitis outbreak in the United States. *N Engl J Med.* 2012. <http://dx.doi.org/10.1056/NEJMoa1212292>.
- Mayoral Cortés JM, Torres Butrón E, García Fernández M, et al. Community cluster of meningococcal disease by *Neisseria meningitidis* serogroup C in Andalusia, Spain, March to May 2011. *Euro Surveill.* 2012;17, pii:20261. Available from: <http://www.eurosurveillance.org/ViewArticle.aspx?ArticleId=20261> [accessed 04.03.15].
- Smith RM, Derado G, Wise M, et al. Estimated deaths and illnesses averted during fungal meningitis outbreak associated with contaminated steroid injections, United States, 2012–2013. *Emerg Infect Dis.* 2015;21:933–40.
- Norma Oficial Mexicana NOM-017-SSA2-1994, para la vigilancia epidemiológica. México, Distrito Federal: Diario Oficial de la Federación; 1999.
- Norma Oficial Mexicana NOM-017-SSA2-2012, para la vigilancia epidemiológica. México, Distrito Federal: Diario Oficial de la Federación; 2013.
- Secretaría de Salud. Epidemiología Manual de Procedimientos Estandarizados para la Vigilancia Epidemiológica de Meningoencefalitis Amebiana Primaria (Amibas de Vida Libre). México; 2012.
- Secretaría de Salud. Epidemiología Manual de Procedimientos Estandarizados para la Vigilancia Epidemiológica de Micobacteriosis [Tuberculosis y Lepra]. México; 2012.
- Secretaría de Salud. Epidemiología Manual de Procedimientos Estandarizados para la Vigilancia Epidemiológica de la Rabia en Humano. México; 2012.
- Dirección General de Epidemiología. Procedimientos de vigilancia epidemiológica y diagnóstico de casos de enfermedad meningocócica en el área metropolitana; 2010.
- Hussein AS, Shafran SD. Acute bacterial meningitis in adults. A 12-year review. *Medicine (Baltimore).* 2000;79:360–8.
- Walling AD, Kallail KJ, Phillips D, et al. The epidemiology of bacterial meningitis. *J Am Board Fam Pract.* 1991;4:307–11.
- Schut ES, Westendorp WF, de Gans J, et al. Hyperglycemia in bacterial meningitis: a prospective cohort study. *BMC Infect Dis.* 2009;9:57.
- ECDC. Annual epidemiological report. Reporting on 2011 surveillance data and 2012 epidemic intelligence data 2013. Stockholm: ECDC; 2013.

21. MacNeil JR, Bennett N, Farley MM, et al. Epidemiology of infant meningococcal disease in the United States, 2006–2012. *Pediatrics*. 2015. <http://pediatrics.aappublications.org/content/early/2015/01/07/peds.2014-2035> [accessed 04.03.15].
22. Macneil JR, Medah I, Koussoubé D, et al. *Neisseria meningitidis* serogroup W, Burkina Faso, 2012. *Emerg Infect Dis*. 2014;20:394–9.
23. Almeida-Gonzalez L, Franco-Paredes C, Perez L, et al. Meningococcal disease caused by *Neisseria meningitidis*: epidemiological, clinical, and preventive perspectives. *Sal Pub Mex*. 2004;46:438–50.
24. Safadi M, Cintra O. Epidemiology of meningococcal disease in Latin America: current situation and opportunities for prevention. *Neurol Res*. 2010;32:263–71.
25. Secretaría de Salud Anuarios de morbilidad 1984–2013. Mexico. Available from: http://www.epidemiologia.salud.gob.mx/dgae/infopid/inicio_anuarios.html [accessed 04.03.15].
26. Secretaría de Salud Información Epidemiológica de Morbilidad Anuario 2011-Versión Ejecutiva. Mexico; 2012. Available from: http://www.epidemiologia.salud.gob.mx/dgae/infopid/inicio_anuarios.html [accessed 04.03.15].
27. Dirección General de Epidemiología. *Bol Epidemiol*. 2014;31.
28. Camacho-Amor MA. Perfil epidemiológico en México de meningitis meningocócica. *Bol Epidemiol*. 2013;30.
29. Chacon-Cruz E, Espinosa-De los Monteros LE, Navarro-Álvarez S, et al. An outbreak of serogroup C (ST-11) meningococcal disease in Tijuana, Mexico. *Ther Adv Vaccines*. 2014, <http://dx.doi.org/10.1177/2051013614526592>.
30. Chacon-Cruz E, Sanchez-Flores A, Rivas-Landeros R, et al. *Neisseria meningitidis* and *Streptococcus pneumoniae* serotype 19A as leading and emerging causes of bacterial meningitis in Northern Mexican children. In: 31st Annual Meeting of the European Society for Paediatric Infectious Diseases 2013. 2013. Abstract number A-534-0012-00308.
31. Velázquez-Pérez L, Ramírez-Crescencio MA. Enfermedades neurológicas de vigilancia y notificación obligatoria: tendencia y desenlace en un Instituto Neurológico del Sistema Nacional de Salud de la Ciudad de México, de 2005 a 2011. *Gac Méd Méx*. 2014;150:540–51.
32. Ramírez-Crescencio MA, Velásquez-Pérez L. Epidemiology and trend of neurological diseases associated to HIV/AIDS. Experience of Mexican patients 1995–2009. *Clin Neurol Neurosurg*. 2013;115:1322–5.
33. De Oliveira FJ, Bartolomeu GD, Correa OG, et al. Neurological disease in HIV-infected patients in the era of highly active antiretroviral treatment: a Brazilian experience. *Rev Soc Bras Med Trop*. 2006;39:146–51.
34. Chacon-Cruz E, Sugerma D, Ginsberg M, et al. Surveillance for invasive meningococcal disease in children, US–Mexico border, 2005–2008. *Emerg Infect Dis*. 2011;17:543–6.
35. Ministerio de Salud Situación epidemiológica actual de la *Neisseria meningitidis* Serogrupo W-135. Chile; 2012. Available from: <http://www.paho.org/chi/images/PDFs/materesavalenzuela.pdf?ua=1> [accessed 04.03.15].
36. Hui ACF, Ng KC, Tong PY, et al. Bacterial meningitis in Hong Kong: 10-years' experience. *Clin Neurol Neurosurg*. 2005;107:366–70.
37. Lu CH, Huang CR, Chang WN, et al. Community-acquired bacterial meningitis in adults: the epidemiology, timing of appropriate antimicrobial therapy, and prognostic factors. *Clin Neurol Neurosurg*. 2002;104:352–8.
38. Lu CH, Chang WN, Chang HW. Klebsiella meningitis in adults: clinical features, prognostic factors and therapeutics outcomes. *J Clin Neurosci*. 2002;9:533–8.
39. Okike HE, Johnson AP, Henderson KL, et al. Incidence, etiology, and outcome of bacterial meningitis in infants aged <90 days in the United Kingdom and Republic of Ireland: prospective, enhanced, National Population-Based Surveillance. *CID*. 2014;59:e150–7.
40. Choy Marrero A, Toraño Peraza DC, Sánchez Álvarez ML. Vigilancia de meningitis por *Streptococcus pneumoniae* en Villa Clara, Cuba, 2012–2013. *Rev Cubana Med Trop*. 2014;66.
41. Instituto de Salud Pública. Protocolo de Salud Pública, Meningitis bacteriana. Colombia; 2014. Available from: <http://www.ins.gov.co/lineas-de-accion/Subdireccion-Vigilancia/sivigila/Protocolos%20SIVIGILA/PRO%20Meningitis.pdf> [accessed 11.04.16].
42. Ramakrishnan M, Ulland AJ, Steinhardt LC, et al. Sequelae due to bacterial meningitis among African children: a systematic literature review. *BMC Med*. 2009;7:47.
43. Schuchat A, Robinson K, Wenger JD. Bacterial meningitis in the United States in 1995. Active surveillance team. *N Engl J Med*. 1997;337:970–6.
44. Jung J, Park H, Park SY, et al. Comparison of the clinical characteristics and outcomes of *Klebsiella pneumoniae* and *Streptococcus pneumoniae* meningitis. *Diagn Microbiol Infect Dis*. 2015, <http://dx.doi.org/10.1016/j.diagmicrobio.2015.02.006> [accessed 22.04.16].
45. Ritch JT, Neely JG, Paniello RC, et al. A practical guide to understanding Kaplan–Meier curves. *Otolaryngol Head Neck Surg*. 2010;143:331–6, <http://dx.doi.org/10.1016/j.otohns.2010.05.007>.
46. Utley M, Gallivan S, Young A, et al. Potential bias in Kaplan–Meier survival analysis applied to rheumatology drug studies. *Rheumatology*. 2000, 39-1-6.
47. Roux A, Canet E, Valade S, et al. *Pneumocystis jirovecii* pneumonia in patients with or without AIDS, France. *Emerg Infect Dis*. 2014;20:1490–73.