



Allergologia et immunopathologia

Sociedad Española de Inmunología Clínica,
Alergología y Asma Pediátrica

www.elsevier.es/ai



REVIEW

A critical review on serine protease: Key immune manipulator and pathology mediator



S. Patel

Bioinformatics and Medical Informatics Research Center, San Diego State University, San Diego 92182, USA

Received 1 August 2016; accepted 31 October 2016

Available online 21 February 2017

KEYWORDS

Serine protease;
Inflammation;
Allergenicity;
Glycosylation;
Serine protease
inhibitors

Abstract Proteolytic activity is fundamental to survival, so it is not surprising that all living organisms have proteases, especially serine protease. This enzyme in its numerous isoforms and homologues, constitutes the quintessential offence and defence factors, in the form of surface proteins, secreted molecules, gut digestive enzymes, venom in specialised glands or plant latex, among other manifestations. Occurring as trypsin, chymotrypsin, elastase, collagenase, thrombin, subtilisin etc., it mediates a diverse array of functions, including pathological roles as inflammatory, coagulatory to haemorrhagic. This review emphasizes that despite the superficial differences in mechanisms, most health issues, be they infectious, allergic, metabolic, or neural have a common conduit. This enzyme, in its various glycosylated forms leads to signal misinterpretations, wreaking havoc. However, organisms are endowed with serine protease inhibitors which might restrain this ubiquitous yet deleterious enzyme. Hence, serine proteases-driven pathogenesis and antagonising role of inhibitors is the focal point of this critical review.

© 2016 SEICAP. Published by Elsevier España, S.L.U. All rights reserved.

Introduction

Mankind is afflicted with a number of health issues, infectious, allergic, metabolic, neural, among others. Unfortunately, with rising pollution, excessive reliance on drugs and increased incorporation of chemicals in diet and day-to-day consumables, health concerns are soaring.¹ Cutting-edge studies are unravelling the hidden mechanisms of diseases, and drugs are being developed, yet morbidity

and untimely mortality continues. Killer virus, bacteria, protozoa, and fungi claim millions of lives every year, more so in developing countries.² Allergies and cancers are more prevalent in developed countries, where irritants exceed.³ Although the disparity is largely getting fuzzy, and both forms of pathogenesis converge in exacerbating the immune system.⁴ The complexity and diversity of pathological mechanisms render it difficult to track the precise pathways exploited by the pathogens, allergens or mutagens. A myriad of factors have been attributed to the maladies. Proteins, in particular enzymes, are pivotal in signal processing and resultant pathologies. Proteases are fundamental to survival

E-mail address: seemabiotech83@gmail.com

across all living organisms, evident from their 2 to 4% share from the entire proteome.⁵ Proteases have been involved in almost all health risks, which can be classified roughly into six categories such as serine proteases, cysteine proteases, aspartate proteases, threonine proteases, glutamic acid proteases, and metalloproteases.⁶ Out of which, specifically serine protease is particularly crucial as it is widely present, from virus to human. This review hypothesises serine protease as a quintessential player in majority of human morbidities and analyses the literature to find pertinent evidence. The scope of recruiting serine protease inhibitors to bridle the enzyme has been discussed. Overall, this review examines this ancient and diverse enzyme family in a new light, which is believed to be of therapeutic concern.

Serine proteases

Serine protease (EC 3.4.21) is an endopeptidase that cleaves peptide bonds like any other protease; however, the serine residues in the active site (serine as a nucleophile) can coordinate many other critical functions, via protein hydrolysis.⁷ The functions are vast, some of which are important such as protein metabolism, digestion, blood coagulation, apoptosis, immunity regulation of development, and fertilisation.^{8,9} Although its role is too pervasive and intricate, cleavage of protease-activated receptors (PARs), the G-protein-coupled receptors on epithelial, vascular, neural and immune cells is the first step in proteolysis.^{10,11} For its key roles, it is quintessentially present across all living beings, virus to human, including plants.¹²

Serine (Ser or S) is a polar amino acid encoded by six codons (UCU, UCC, UCA, UCG, AGU and AGC), the highest number of codons for any amino acid.¹³ The human body can synthesise it, and it can be formed from glycine (by hydroxymethylation with the help of vitamin B) and in turn be converted to cysteine/methionine.¹⁴ Non-essentiality status of this amino acid can be attributed to its indispensability for purine and pyrimidine synthesis,¹⁵ antibody synthesis (the effector molecule of immune system), also sphingolipid and folate synthesis. Both L and D-form serine exists in humans, with L-form synthesised in the brain astrocytes, which in turn transforms to D-form by the activity of serine racemase.¹⁶ The dual configuration makes serine a complicated amino acid, as each form has different functions, with D-serine perturbation attributed to neural pathologies.^{17,18} Named after its first protein source, the silk protein sericin, serine can be found widely. Serine-rich proteinous foods include meat, dairy products, nuts (almonds, walnuts, peanuts), gluten, sesame seed, and soy beans (surprisingly, those associated with food allergies). Serine is very prone to bindings, thus can lead to deactivation of the protein it is harboured by (insecticides are based on this approach).¹⁹ The secreted proteins of bacteria and fungi have been discovered to contain serine proteases, of which the serine residue is often glycosylated (N glycosylation).²⁰ Glycosylation (the addition of glycans or oligosaccharides) of serine, makes the protease complex.²¹ This posttranslational modification is crucial but stochastic as it largely depends on environment and epistasis between genes.^{22,23} Protease glycosylation has been linked to diseases such as diabetes,²⁴ cancer²⁵ and an array of neurodegenerative ailments.²⁶ Phosphorylation of

serine/threonine by kinases and dephosphorylation by phosphatases is the hallmark of signalling pathways.²⁷ Further, the occurrence of serine in both L and D form in humans has been linked to neural diseases like epilepsy, amyotrophic lateral sclerosis (ALS), Alzheimer, schizophrenia.¹⁷ Fig. 1 illustrates features of serine amino acid.

Based on substrate specificity (casein, albumin, haemoglobin, extracellular matrix proteins as fibronectin, fibrinogen, collagen, etc.), serine proteases are ramified into numerous types, prominent of which are trypsin-like, chymotrypsin-like, subtilisin-like, elastase-like, kallikrein, cathepsin, etc.⁷ The target of each of these serine proteases seem to be different (gut mucosa, skin epithelial cell, lung mucosa). The enzymes are divided into many clans/superfamilies (further divided into families), based on catalytic site topology. PA is a major superfamily (clan) of serine proteases of which S1 (trypsin-like fold) is a well-studied family.²⁸ Here, the active site is generally made of three amino acids, Ser, His and Asp (the catalytic triad which works by charge-relay network). Sometimes one or more of these residues are substituted by similar amino acids. The residues play a critical and complementary role, despite their dispersed location in the protein. Trypsin-like proteases cleave peptide bonds at Lys or Arg, variations of the enzyme being trypsin, matriptase, kallikrein and granzymes.⁹ Extreme plasticity of this protease fold is conspicuous, and several domains to bind here are apple, CUB (for complement C1r/C1s, Uegf, Bmp1), epidermal growth factor-like (EGF), fibronectin, kringle, sushi, and von Willebrand factor.⁸ Its role in digestion, blood coagulation, and immunity (executed through a cascade of sequential zymogen activation) is well-validated.²⁹ Chymotrypsins cleave the peptides on the carboxyl side of Phe, Tyr and Try (the larger hydrophobic residues). The role of chymotrypsin in impairing cell-cell adhesion has been validated. Elastase-like proteases cleave bonds at the smaller non-polar amino acids Ala, Gly or Val. Fig. 2 shows the polarisation of nucleophile serine by a strategically aligned acid and base residues. Subtilisin-like protease functions by the same mechanisms, leading to a wide array of atopic conditions, although it is phylogenetically different. Overall, the enormous extent of diversification in serine proteases (isoforms, homologues, etc.) has occurred due to convergent evolution, and resultant polymorphism (from the requirement of protection against different attackers). Also, this aspect can be held responsible for the low substrate specificity and subsequent high IgE-reactivity among allergens. A study on phyto-pathogen insects revealed the occurrence of multiple serine protease genes adjacent to each other in the genome, implying frequent gene duplications in this family.³⁰ Empirical studies on this enzyme have revealed their molecular weight (16–95 kDa) and conformation (monomeric to multimeric) varying widely, due to variable extraction, purification conditions, also, glycosylation and complexation variabilities. However, universally, their N terminal sequence is conserved as it constitutes the signal part.³¹

Serine protease-mediated inflammation

Serine protease is ubiquitous to all living organisms, although niche specialisation and adaptive evolution has

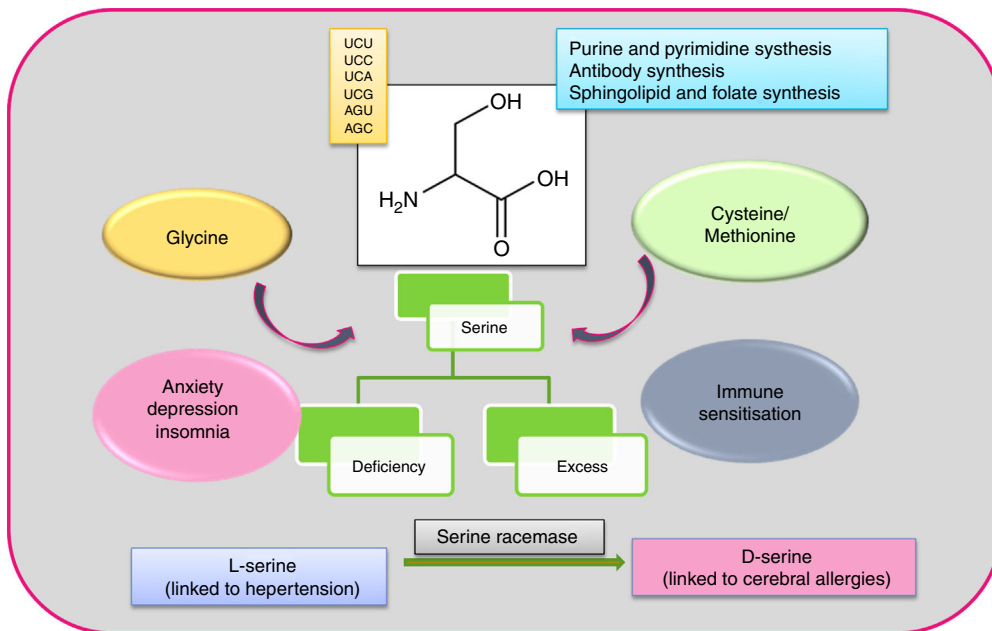


Figure 1 Features of serine amino acid.

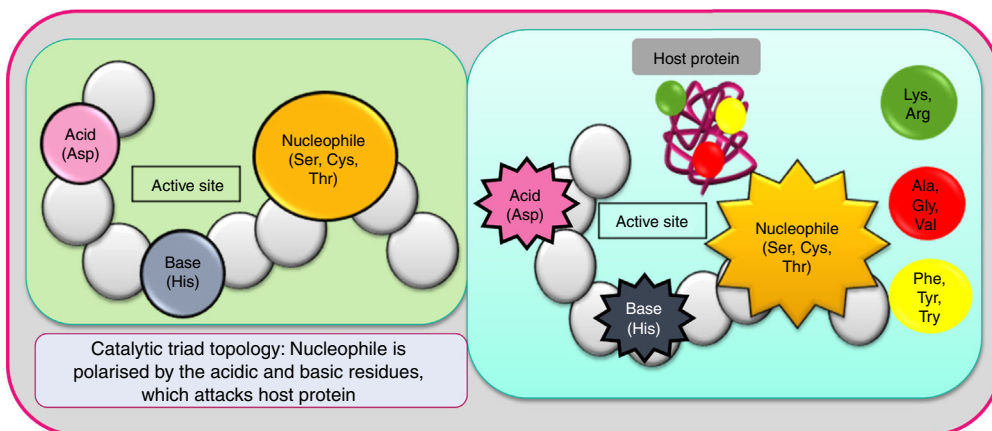


Figure 2 Catalytic triad motif made of acid, base and nucleophile is hallmark of catalytic sites.

introduced variations over the millennia. In silico studies reflect conspicuous homology between these vital and deleterious enzymes. The subsequent sections explore the exploitation of this virulence tool by pathogens, allergens and its own role as mutagens.

Virus

Each category of pathogens has deadly and drug resistant forms, of which viruses are particularly difficult to control for their rapid replication leading to viraemia,³² and frequent mutation rates due to error-prone polymerase.³³ Viruses like HIV, Ebola, hepatitis virus, dengue, zika, papilloma virus, and Cytomegalovirus cause immense morbidity and mortality. Despite their nucleic acid and capsid differences, all of them possess a non-structural peptidase in their polyprotein, a serine protease.^{34,35} In some viruses, the nucleophile serine of the serine protease is replaced

by cysteine sulfhydryl as in picornavirus, yet sequence configuration remains homologous.³⁶ Viruses like dengue contain distinct chitin-binding domain (a carbohydrate-binding domain) in this enzyme,³⁴ which might be indicative of their ability to invade their insect vectors. Interaction of these serine proteases with host mannan binding lectins (MBL), the pattern recognition molecules have come forth. In hepatitis C virus (HCV) and influenza virus, MBL-associated serine proteases type 1 (MASP-1), type 2 (MASP-2) or type 3 (MASP-3) have been discovered to mediate complement activation by action on C4 (the essential innate host immunity component).³⁷⁻³⁹ Ficolins (collagen-like long thin stretches and fibrinogen-like globular domains with lectin activity), the oligomeric lectins are also part of these complement activation complex.^{39,40} Evidence of different MASPs forming co-complex has surfaced.⁴¹ Fig. 3 illustrates the MBL and ficolin-mediated complement activation pathway of pathogen serine protease.

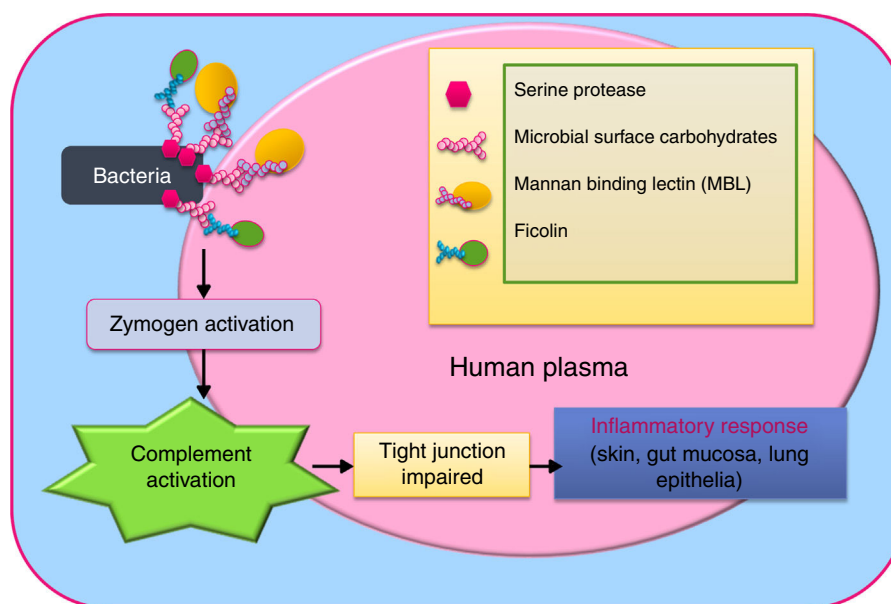


Figure 3 Complement activation following recognition of serine protease.

Bacteria

In bacteria, this enzyme is coded by multiple genes of ser family. It is represented by many members in pathogen such as *Mycobacterium tuberculosis*, *Bacillus licheniformis*, *Pseudomonas aeruginosa*. They belong to family subtilisin, signal peptidase, Lon-A peptidase, Clp protease, carboxypeptidase, among others. In vitro macrophage-based studies have proved that serine protease augments the entry of bacilli into human macrophages.⁴² *Staphylococcus aureus* secretes exfoliative epidermolytic toxins characterised to be serine protease.⁴³ Apart from skin desquamation, these proteases also cause bacterial dissemination.⁴³ *Aeromonas sobria* secretes serine protease, that cleaves plasma proteins (like fibrinogens), causing the onset of sepsis complications, such as shock and blood coagulation disorder.⁴⁴ Enteropathogenic *E. coli* secretes serine protease enterotoxins. These proteases alter host actin cytoskeleton and impair their stability.⁴⁵ Also, other Gram negative bacteria like *Neisseria*, *Shigella*, *Salmonella*, *Edwardsiella* etc. elaborate these autotransporter serine proteases which act as adhesins, attach to epithelial and endothelial cells, inducing pathogenesis.^{46,47} *Mycobacterium tuberculosis* serine protease (ES-31) is known to cause virulence by immune evasion, so the drug isoniazid targets it.⁴² Lung granulomas where this pathogen resides is hypoxic and rich in cathepsin G-type serine protease.⁴⁸ In a *Clavibacter michiganensis* subsp. *Michiganensis* strain, a gene responsible for host-pathogen interaction was detected, which happened to be serine proteases.⁴⁹ Chitinases, the glycosyl hydrolases with chitin binding domains are known to be a virulent weapon of pathogenic bacteria as *Streptomyces*, *Alteromonas*, *Escherchia*, and *Aeromonas*.^{50,51} Interestingly, some serine proteases bear this domain as well.

Protozoa

Malaria parasite (*Plasmodium falciparum*) has subtilisin-like proteases, which mediate erythrocytes invasion. Proteolysis of multi-functional eukaryotic protein profilin by the protease was discovered to mediate motility, virulence and immune evasion.⁵² Another related apicomplexan parasite *Toxoplasma gondii* apparently follows the same strategy.⁵² *Leishmania donovani*-secreted serine protease downregulates the microbicidal activity of macrophages by reducing reactive oxygen species (ROS) and nitric oxide (NO) generation from these phagocytic cells.⁵³ The rhomboid-like serine proteases elaborated by *Entamoeba histolytica* mediate pathogenesis during intestinal amoebiasis.⁵⁴

Fungal

Like other life forms, fungi are endowed with this enzyme. Well-known fungi as *Botrytis cinerea*, *Ustilago maydis*, *Aspergillus nidulans*, *Neurospora crassa*, *Magnaporthe grisea*, *Sclerotinia sclerotiorum*, *Trichoderma reesei*, and *Saccharomyces cerevisiae* have been found to secrete this protease. Further, it has been determined that the Ser/Thr residue are O-glycosylated.²⁰ Subtilisin-like serine proteases have been discovered in many pathogenic fungi such as *Aspergillus*, *Penicillium*, *Trichophyton*, and *Cladosporium herbarum*.⁵⁵ *Aspergillus fumigatus* and the bacterial subtilisins are all major allergenic molecules. *Curvularia lunata* allergen Cur l 1 is a serine protease.⁵⁶ Although almost all fungal aeroallergen-driven airway inflammation mechanisms are almost the same, a study on *Alternaria alternata* has been outlined here. The fungus serine protease led to the rapid release of IL-33 and consequent mucosal hypersensitivity.⁵⁷ Hyper-permeability of blood-brain barrier is mediated by serine protease

during cryptococcal meningitis caused by fungus *Cryptococcus neoformans*.⁵⁸

Serine proteases have been isolated from the fruiting bodies of edible, medicinal and poisonous mushrooms, which range in approximate size 19–52 kDa, with a conserved N-terminal sequence. Subtilisin-like serine proteases have been isolated from the insect-pathogenic fungi *Metarhizium anisopliae* and *Cordyceps militaris*.⁵⁹ Edible mushroom *Termitomyces albuminosus*⁶⁰ and *Pholiota nameko*⁶¹ also produce it. A prolyl oligopeptidase (cutting at Pro residue), a serine protease was isolated from the lawn mushroom *Conocybe apala*.⁶² The cytotoxic components in the sclerotium of *Lignosus rhinocerotis* (tiger milk mushroom) were identified as serine proteases (31 and 36 kDa).⁶³ Wild Ascomycete mushroom *Helvella lacunose* has serine protease helvellisin (33.5-kDa).⁶⁴ Chitin-binding domains are present in the fungal serine protease as well.^{50,65} A study discovered numerous subtilisin-like serine proteases in fungi from various sources, which showed that the subtilisin domains can co-occur with other domains, depending on survival requirements.⁶⁶

Helminths

Helminths (nematodes, cestodes, trematodes) constitute one of the higher phylum of human parasites which include members such as *Ascaris* spp., *Brugia malayi*, *Ancylostoma* sp., *Onchocerca* sp., *Haemonchus* sp., *Trichinella spiralis*, *Trichostrongylus vitrinus*, *Anisakis simplex*, *Trichuris suis*, *Schistosoma cercariae* and *Fasciola hepatica*.^{67,68} These helminths secrete serine protease from their acetabular cells and use it to invade human skin and migrate through it. Subtilisin-type protease has been discovered to polarise towards Th2-driven inflammatory responses.⁶⁹

Arthropod

It is the largest phylum with an immense number of members of health concern to humans, due to their sting or allergic nature. The most common of them include the house mosquito, housefly, maggots, dust mite, cockroach, shrimp, lobster, crab, hornet, ant, spider, scorpion etc. House dust mite (*Dermatophagoides pteronyssinus*) allergen of serine proteases category belong to trypsin, chymotrypsin, and collagenase type.^{70,71} These allergens (Der p 3, Der p 6, and Der p 9) cause proteolytic cleavage of occludin at epithelial tight junctions which leads to immune cell infiltration, subsequently manifested in nerve and tissue inflammation such as allergic airway inflammation.^{72–74} Cockroach (*Periplaneta americana*) allergen (Per a 10) was demonstrated to be a serine protease.⁷⁵ These proteases have been detected in the midgut of many larvae. A planthopper insect known to cause hopper burn disease in rice, mediates its pathogenesis through serine protease and homologous proteins.³⁰ More than 100 related genes were found in the insect.³⁰ Scorpion hepatopancreas has chymotrypsin-like serine proteases.⁷⁶ Spider venoms are also made of serine protease and possess proteolytic activity. One study found procoagulant,⁷⁷ dermonecrotic⁷⁸ property of these venoms. Some of the isolated spider venom proteases include loxoscelism.⁷⁸ A chitin binding domain *Sp22D* was identified in the malaria vector

Anopheles gambiae.⁷⁹ Also, a number of chitin binding domain-containing trypsin-like serine proteases have been isolated from *Culex quinquefasciatus*.⁸⁰ These domains are present in chitinases which hydrolyse chitins into soluble oligosaccharides (such as chitobiose). Bee-secreted serine proteases have been found in honey, which differ in compositions and might be responsible for the immunomodulatory role.⁸¹

Plants

Just like animals, plants do have serine proteases, mostly contained in seeds. While plant cysteine proteases (papain, ficain, actinidin, bromelain,) are well studied, serine protease have been isolated from soybean, jack bean, mung bean.⁸² These enzymes are trypsin-like and have shown milk-clotting activity. Solanaceae family members have subtilase-type serine protease, while the protease cucumisin occurs in prince melon fruit, cucurbits etc.

Moreover, plant pollen contain subtilisin-like serine proteases, which have been shown to disrupt membrane permeability by manipulating transmembrane adhesion (tight junction) proteins such as occludin, claudin-1, ZO-1 and E-cadherin^{83,84} and subsequently eliciting IgE antibodies. Although all plants produce pollens, some are conspicuously more allergenic, such as the pollens of grass (rye, timothy, Bermuda, Kentucky), olive, pine, cedar, cypress, birch, and ragweed.^{83–87} Allergenicity of pollen is well-known and the discovery of serine proteases in them as the inducer of allergic asthma, atopic dermatitis, rhinitis, conjunctivitis, urticaria, angio-oedema, and abdominal pain makes sense.

Latex allergy is a common hypersensitivity, many of the allergens being from plant source which overlap as food allergens. These latex allergens are serine proteases of type thrombin-like.⁸⁸ Produced copiously by *Euphorbia* sp., *Ficus*, *Artocarpus* sp. these proteases have shown thermostable, pH stable (4–12), digestion-resistant, gelatinolytic, collagenolytic, fibrinolytic, fibrinogenolytic, caseinolytic, and amidolytic activities, which are often found in glycoprotein form.^{89–92} The discovery of novel proteases continues, and some well-characterised latex proteases identified so far include benghalensin, EuP-82, hirtin, and wrightin.^{88,90,93} Among higher plants Apocyanaceae, Euphorbiaceae, Moraceae, Papaveraceae, Caricaceae are major families containing a high amount of these proteases.⁹⁴ It is interesting that a lot of plant-based folk medicine dwells on these proteases.

Food allergens cause sensitisation towards different proteins. Tomato allergy is mediated by PR-10, profilin, and lipid transfer protein (LTP) allergens in tomato.⁹⁵ Peach and tomato-specific IgE levels were correlated.⁹⁶ Serine protease from mango peel are associated with allergy.⁹⁷ R-type lectins like ricin are recognised by human serine protease.⁹⁸

Plants secrete chitinases (with chitin-binding domain) that degrade chitin, a major component of fungi and insects, as a defence strategy. To counter these antifungal enzymes, the intruders possess chitin-binding effector proteins. Fungi like *Fusarium*, *Verticillium*, *B. cinerea* secreted metalloprotease and serine protease for plant chitinases cleavage.⁹⁹

Snakes and other vertebrates

Snake bite and venom-related death is a significant mortality factor especially in tropical, and developing countries.¹⁰⁰ The key components of the venoms are serine proteases and metalloproteases. Viper venom serine protease has been widely studied and known to coagulate blood and disrupt homeostasis of victims.¹⁰¹ Structural (sequence and molecular weight difference) and functional variations (action on fibrinogen chains) between serine proteases of vipers has been observed.¹⁰² Some of these proteases exert kallikrein-like (produces inflammatory peptide bradykinin known to mediate vasodilation, oedema, smooth muscle spasm and pain fibre stimulation) activity.¹⁰³ Snake venom-derived serine proteases include flavoxobin.¹⁰⁴ Komodo dragon (*Varanus komodoensis*) venom capable of shock induction is a kallikrein-type serine protease as well.¹⁰⁵

Fish viscera contain this enzyme, in its variations such as trypsin, chymotrypsin and elastase.¹⁰⁶ Another fish serine protease, granzyme was involved in cytotoxicity.¹⁰⁷ All other vertebrates have this ubiquitous digestive enzyme in diverse forms. Mice, rat, and dog saliva have kallikrein-type serine proteases.^{108,109} While vertebrates have serine proteases with higher identity with that of human, they are less provocative yet they act as the carriers of lethal pathogens such as leptospires in rats,¹¹⁰ *Bartonella* bacteria in cats, and Lyssavirus in dogs,¹¹¹ among others.

Human

Human serine proteases family is large (about 180 members) with variations as nucleoporin, lactoferrin, type II transmembrane family serine proteases (TTSP), etc.¹¹² One of the members of TTSP, the TMPRSS4 is associated with the pathogenesis of influenza viruses, through cleavage of hemagglutinin and also, metastasis in certain cancers.¹¹² Human skin stratum corneum has inflammatory cytokines and proteases including serine protease. These serine proteases exert kallikrein 5, kallikrein 7, urokinase, plasmin and a tryptase-like, leucocyte elastase enzyme activities.¹¹³ Due to the intense enzyme activities, the skin suffers barrier impairment, irritation, and poor tolerance.¹¹⁴

Pathogens often exploit host serine protease to facilitate invasion and pathogenesis, some examples of which have been outlined here. A TTSP family member TMPRSS2 allows HCV entry, and is thought to be involved in pathogenesis.¹¹⁵ Also, human airway trypsin-like proteases (HAT) are targeted by influenza viruses.¹¹⁶ Ebola virus and coronavirus have been observed to rely on host cell serine proteases for their envelope glycoproteins activation.¹¹⁷ Even persisting pathogens like *Helicobacter pylori* and *M. tuberculosis* bind to host plasminogen (a glycoprotein in plasma) and convert it into an active form of serine protease, exploiting it for traversal through host system via connective tissue and extracellular matrix degradation.^{118,119} Like many other peptides and larger proteins, serine proteases can traverse mucosal barrier of the gastrointestinal tract, and reach intact to blood and lymph.^{120,121}

Serine protease inhibitors

Apart from the protein denaturants like surfactants, organic solvents, chelating agents, such as ethylenediaminetetraacetic acid (EDTA), and metal ions (Fe^{2+} and Zn^{2+}), several inhibitors particularly inactivate serine proteases. Serine protease inhibitors (serpins) and small serine protease inhibitors (smapins) are peptides or polysaccharides that inhibit serine proteases irreversibly and protect target proteins from degradation.⁵ Serine proteases can be inhibited by compounds such as phenylmethylsulfonyl fluoride (PMSF), dithiothreitol (DTT), pepstatin, lima bean trypsin inhibitor, soybean trypsin inhibitor, ovomucoid, and aprotinin,⁶⁰ although the inhibitors are not universally effective. Common features of the protein and peptide inhibitors include β -barrel fold, knottins, Bowman-Birk family, etc. The protease inhibitors can be of many families, well-studied types being Kazal-type (viral, fungal, termite, mice, human (SPINK))¹²² and Kunitz-type (mostly in venoms, e.g. spider, tick, snake).¹²³ Termite-derived Kazal-type inhibitor blocked activity of chymotrypsin and elastase.¹²⁴ A spider venom-derived Kunitz-type inhibitor inactivated plasmin and elastase.¹²⁵ Also, Kunitz type inhibitors have been discovered in the saliva of ticks.¹²⁶ Both types of inhibitors have been identified in helminths.⁶⁷ Kazal-type inhibitors have been found in jellyfish (Cnidarian phylum) and echinoderm sea cucumber (*Holothuria glaberrima*).¹²⁷ Also, other marine organisms like ascidians and algae have been validated to contain sulfated polysaccharides that exhibit serine protease inhibitor properties.¹²⁸ Kunitz-type serine protease inhibitors were derived from spider which showed antifibrinolytic and antielastolytic effects.¹²⁵ From scorpion (*Scorpiops jendeki*) venom gland many protease inhibitors have been isolated, which resembled Ascaris-type.¹²⁹ It indicates that folds are often shared in these peptides. These inhibitors take part in immune regulation and parasite survival through interference with the host immune response, thus they amount to toxins as well. Specificity of the inhibitors differs and they can selectively inhibit any form of serine protease (trypsin, chymotrypsin, elastase). A toad species (*Rhinella schneideri*) gland has a serine protease inhibitor bufadienolide, specific to chymotrypsin.¹³⁰ Mushrooms are trove of serine protease inhibitors such as cnispin (*Clitocybe nebularis*), LeSPI (*Lentinus edodes*), cospin (*Coprinopsis cinerea*).¹³¹ The inhibitor expression is induced in plants in response to herbivory, which inactivates devouring insects' digestive proteases. Inhibitors have been found from plants as *Solanum nigrum*.¹³² In barley, trypsin inhibitor (BTI-CMe) has been discovered that inactivate pest digestive enzymes.¹³³ Sulphated chitin and deacetylated chitin (chitosan) have been validated to confer antiviral property.¹³⁴ It can be interpreted that the viruses can degrade chitin due to their proteases, which favours their survival in hosts. But, the modified forms of chitin cannot be cleaved, so they perish. Fungi have inhibitors to deter the host proteases. *Phytophthora infestans* protease inhibitors inactivate the subtilisin-like serine protease of tomato.¹³⁵ Use of these inhibitors to prevent melanin formation in mushrooms is proposed. Kazal-type serine protease inhibitor in chicken egg white is a major allergen.¹³⁶ Many inhibitors have been identified in the human body, such as α 2-macroglobulin in human.⁴⁴ Another study linked the epistatic relation

between serine protease inhibitor Kazal-type 5 (SPINK5), and thymic stromal lymphopoietin (TSLP) as a causative factor for asthma.¹³⁷ Inhibitors can inhibit at nM and μ M levels. Kazal, Kunitz, and Bowman-Birk-type inhibitors inactivate their target serine protease by lock-and-key mechanism.⁵ An exhaustive review discussing a broad panel of protease inhibitors and their *modus operandi* can be an interesting reference for additional insights in this area.⁵

So, serine protease inhibitors are ubiquitously present in organisms as the serine protease itself. Functionally, both components are tied together like two sides of coins. It is just the right activity at the right time is required. Both are essential for ion channel activity (K^+), blood coagulation, complement activation, fibrinolysis, and inflammation. The protease-based warfare between organisms is complex as inhibitors are recruited to inactivate proteases, which in turn are inactivated by other proteases. For example, *Helicoverpa armigera* has protease inhibitor-resistant proteases.¹³⁸ It leads to the question if all pathogens follow this approach as well?

Discussion

Based on the findings surfaced in recent times, certain insights have been discussed here, which might be critical for revising the clinical research approach and therapeutic modalities. As the discussion revolves around humans, the serine protease-immune system crosstalk have been mentioned.

The complement system is a humoral component of the immune system, working in tandem with both innate and adaptive immune system, with a protective role against pathogens.¹³⁹ This system is a highly organised proteolytic cascade of 35 different soluble and membrane-bound proteins.^{140,141} The proteins largely synthesised in the liver, reside in the plasma or cell surfaces as inactive precursors (zymogens), to be summoned for emergencies.¹⁴² When the signal reaches, these dormant proteins are cleaved or processed by activation pathways such as classical, alternative or lectin pathway.¹⁴³ It is often the target of external or pathogen-elaborated serine protease, or might be manipulated by human serine protease.^{140,141} Hyperactivation of these proteins cause excess inflammation resulting in numerous pathologies, including cardiac and renal complications.¹⁴³

Human skin is a foremost target of exogenous serine protease, which tends to disintegrate the homeostasis. In Netherton syndrome, a rare autosomal recessive skin disease, mutations in SPINK5 (serine protease inhibitor of kazal type 5) gene leads to kallikrein- and elastase-like activity. These lead to complement cascades activations, which result in desmoglein 1 degradation and desmosome cleavage, compromising the skin barrier.¹⁴⁴ Autophagy is a protective process involving lysosomal degradation of misfolded proteins, which serine protease like cathepsin A inhibits.^{145,146} Activation of elastase-type serine protease can lead to acute pancreatitis, chronic inflammatory lung diseases, and cancer.¹⁴⁷

Despite the detrimental effect of serine protease from other plant and animals, humans themselves have serine protease for their critical role in physiology. It

points towards the presence of some discriminating system preventing self-serine protease to affect self-tissue or activating it only while required. On the other hand, it cannot denaturate all the external ones. The activated serine protease elicits immune exacerbation and may change epigenetic (methylation, sulfation, acetylation, phosphorylation) patterns of some other genes,¹⁴ since some allergies once started are chronic. Similarly, in infects, pathogen serine protease might cause epigenetic changes to human genes and start an adverse chain reaction.

Are plant pathogens capable of infecting animals? Evidence suggests so. Ascomycetous fungus *Pseudogymnoascus destructans* causing bat white-nose syndrome has serine proteases with high homology to plant pathogenic fungi.¹⁴⁸ Thus, it is likely that pathogenic organisms have ability to infect other hosts as well.

If not all, at least the virulence of mould, mite, arthropod and related food allergens like shrimp, lobster can be explained by the presence of serine protease in them. Similarly, pathogen virulence can be partially explained as causal of this enzyme. Although serine protease is the oldest and most-represented protease, it collaborates and is complemented by other critical proteases as cysteine protease (e.g. Der p1), the aspartic protease (Bla g 2) to constitute a weapon.

Serine protease is present in virus, but ever since it has undergone immense diversity and complexity. Serine proteases and chitinases both have chitin binding domains. These domains have been detected from viruses to humans. Human macrophages express chitinase with this domain, which mediates chitin cleaving and hydrophobic surface sensing.¹⁴⁹ It is pertinent to mention that chitin (insoluble linear β -1,4-linked polymer of *N*-acetylglucosamine) is a major component of algae, fungi, arthropods (gut lining, and cuticles) and nematodes.^{50,65}

One thing is clear that every system is more closely related than expected, with homologous serine proteases, displaying various degree of homology between them. Trypsin, elastase, profiling, LTP etc. share different degree of identities. The fact that virus, the simplest of life forms contain this enzyme, among the very limited enzymatic apparatus, conveys that this protease is indispensable to all. All life forms contain serine proteases and its inhibitors, which they use for offence and defence. Depending on the war mode, and serine protease contained, the mechanisms vary. Arthropods are rather small and affect humans by biting or causing contact allergy. Virus, bacteria, protozoa and fungi, nematodes are parasites, so they keep on replicating, producing proteases consistently to overwhelm immune system and making it produce inflammatory cytokines against itself. Some mushrooms are edible, while many are inedible, and toxic. These poisonous mushrooms contain higher amounts of proteases. Even edible ones contain them, but in a lesser amount, which can be taken care of by cooking well. That is why while consumed uncooked, they cause abdominal pain. Some proteases might be heat stable, so even cooking cannot degrade them. On the other hand, toxic mushrooms, big arthropods and snakes have enough serine proteases contained in them to inhibit the human enzymatic system and kill it.

All living beings have serine proteases which they use against each other to survive. The well-characterised

Table 1 Key types of serine proteases and source of their inhibitors.

No.	Types of serine protease	Diseases/conditions	Serine protease inhibitors
1	Trypsin	Inflammatory bowel disease, lung and liver injuries, periodontal disease, emphysema	Mushroom, plant seeds, Helminth
2	α -Chymotrypsin	Alzheimer's disease, Parkinson's disease	Bacteria, Helminth, scorpion
3	Collagenase	Emphysema, urticaria, preterm parturition	-
4	Elastase (latex)	Urticaria, contact dermatitis, netherton syndrome, bronchoconstriction, asthma, rhinitis, rhinosinusitis, cystic fibrosis, neutropenia	-
5	Plasmin	Conjunctivitis, encephalomyelitis, colitis, coronary artery disease, Alzheimer's disease	Spider, snake
6	Thrombin	Chronic obstructive pulmonary disease, cardiovascular disease, von Willebrand's disease, Alzheimer's disease, pneumococcal meningitis, sickle cell disease	-
7	Urokinase	Chronic kidney disease, glomerular disease, cardiovascular disease, epilepsy, chronic obstructive pulmonary disease, prostate cancer, myeloid leukaemia, breast cancer	-
8	Kallikrein	Crohn's disease, Alzheimer's disease, renal disease, ischaemic stroke, cardiovascular disease, arthritis, hypertension	-
9	Cathepsin	Inflammatory bowel disease, Alzheimer's disease, down syndrome, periodontal disease, palmoplantar keratosis	-
10	Subtilisin	Huntington's disease, coronary artery disease	Plant pollens, plant, fungi, Helminth, mushroom, malaria parasite

serine proteases, organism producing them, diseases mediated by them and their inhibitor sources have been presented in Table 1. Some examples have been discussed here. An ascomycetous fungus *P. destructans* responsible for White-nose syndrome in bats have been attributed to extracellular serine proteases (subtilisin-like).¹⁴⁸ Nothing is simple or straight-forward in living world. To counter inhibitors, animals make their proteases insensitive as seen in plant-eating insects.¹³⁸

Microbial enzyme technology is gradually making its foray into food, feed, textile, laundry sectors, among others.¹⁵⁰ Although these enzymes seem attractive over chemicals, the risks abound as well, which must be taken care of before they unleash a Pandora's Box. Some supporting evidence has been discussed here. Usage of serine protease subtilisin in the detergent industry led to an outbreak of occupational asthma in workers.¹⁵¹ Development of vaccines from serine proteases can be pursued, as preliminary works have resulted in prospects. A fish pathogen *Saprolegnia parasitica* secretes a subtilisin-like domain-containing protein which showed an antibody response.¹⁵² *L. donovani*-secreted serine protease is used to develop vaccine against visceral leishmaniasis by exploiting its IFN- γ activity.¹⁵³ HtrA family serine proteases in human has been observed to play a protective role in cancer, thus their expression and activation to induce apoptosis of cancerous cell is being pondered.¹⁵⁴ A search for novel types of serine protease and their inhibitors ought to be carried out to accelerate thera-

peutic development for protease-mediated pathologies like strokes, ischaemia, pulmonary emboli, deep vein thrombosis, allergies among myriad others. However, it is not an easy intervention, as this enzyme is vital to human survival. Sparing the human enzyme, yet annihilating that of pathogens and allergens is challenging, due to their obvious homology sharing.

Many facets that ought to be investigated have been mentioned here. How human hormone influences the external serine proteases needs to be probed, as many allergens are gender-dependent.¹⁵⁵ How metal allergens like nickel, copper etc. are linked to this protease should be looked into. A study in this regard has reported the role of nickel in reducing the stability of a serine protease inhibitor significantly, i.e. lowering the half-life of the human plasminogen activator inhibitor type 1 to barely ~5 min.¹⁵⁶ It is alarming because again the unopposed serine protease seems to be causing these metal allergies. Which pathways are co-controlled by cysteine proteases needs to be investigated, as perturbation in the ratio of these two amino acids is linked to many diseases. A study on Chikungunya virus revealed that cysteine and serine residue in the catalytic dyad are interchangeably capable of proteolysis.¹⁵⁷ As serine is prone to conversion into cysteine, serine protease and cysteine protease generally share high homology, and can be studied together as peptide hydrolases. The precise nature of the cross-talk with histidine kinase and phosphatase signalling should be evaluated. Although it is

partially proven, the role of diet and alcohol consumption in deciding the response to serine proteases of pathogens, allergens, and human microbiome can be insightful. Many of the serine protease-mediated pathogenesis caused by virus (dengue fever, chikungunya, encephalitis), bacteria (meningitis, leprosy), fungi (meningitis), protozoa (brain malaria), dog saliva (rabies) target the nervous system, the cause of which ought to be probed. High myo-inositol leading to neuro-inflammation via activated astrocytes and microglia has come forth.^{158,159}

Conclusion

This manuscript covers a myriad of facets of this critical enzyme serine protease, which however merely scratches the surface, with the bulk of the iceberg yet to be figured out. However, it certainly leaves a lot to ponder over, hypothesise and investigate. Likewise, it is startling to find that all pathogens follow almost the same pathogenic route that revolves around serine protease or its homologues. It might also lead to the crosstalk of infectious diseases, allergies and carcinogenesis, as all three forms of pathologic manifestation arise from excess inflammation. Serine proteases can be developed into immunotherapeutic, although it is important to not meddle with this enzyme produced by human itself. As more literature is examined, the interconnections are likely to be clearly visible. Just the jigsaw puzzle needs to be assembled properly, which can be accelerated by revising our perspective, getting past the thought that clinical interpretations so far are written-in-rock, and looking at things in new light.

Ethical disclosures

Confidentiality data

The authors declare that no patient data appears in this article.

Right to privacy and informed consent. The authors declare that no patient data appears in this article.

Protection of human subjects and animals in research. The authors declare that no experiments were performed on humans or animals for this investigation.

Conflict of interest

The authors have no conflict of interest to declare.

References

- Baccarelli A, Bollati V. Epigenetics and environmental chemicals. *Curr Opin Pediatr.* 2009;21:243–51.
- Bhutta ZA, Sommerfeld J, Lassi ZS, Salam RA, Das JK. Global burden, distribution, and interventions for infectious diseases of poverty. *Infect Dis Poverty.* 2014;3:21.
- Yang S-N, Hsieh C-C, Kuo H-F, Lee M-S, Huang M-Y, Kuo C-H, et al. The effects of environmental toxins on allergic inflammation. *Allergy Asthma Immunol Res.* 2014;6:478–84.
- Kowalczywska ME, Brożyna A, Józwicki W, Pławski K, Przybyszewski M, Wrotek S, et al. Analysis of the involvement of cytokines in allergy and breast cancer association. *Contemp Oncol (Poznań, Poland).* 2014;18:396–402.
- Farady CJ, Craik CS. Mechanisms of macromolecular protease inhibitors. *Chembiochem.* 2010;11:2341–6.
- Del Rosso JQ. Application of protease technology in dermatology: rationale for incorporation into skin care with initial observations on formulations designed for skin cleansing, maintenance of hydration, and restoration of the epidermal permeability barrier. *J Clin Aesthet Dermatol.* 2013;6:14–22.
- Gasteiger E, Gattiker A, Hoogland C, Ivanyi I, Appel RD, Bairoch A. ExPASy: the proteomics server for in-depth protein knowledge and analysis. *Nucleic Acids Res.* 2003;31:3784–8.
- Di Cera E. Serine proteases. *IUBMB Life.* 2009;61:510–5.
- Gohara DW, Di Cera E. Allosteric in trypsin-like proteases suggests new therapeutic strategies. *Trends Biotechnol.* 2011;29:577–85.
- Grant A, Amadesi S, Bunnett NW. Protease-activated receptors: mechanisms by which proteases sensitize TRPV channels to induce neurogenic inflammation and pain. *CRC Press/Taylor & Francis;* 2007.
- Soh UJK, Dores MR, Chen B, Trejo J. Signal transduction by protease-activated receptors. *Br J Pharmacol.* 2010;160:191–203.
- Tripathi LP, Sowdhamini R. Genome-wide survey of prokaryotic serine proteases: analysis of distribution and domain architectures of five serine protease families in prokaryotes. *BMC Genomics.* 2008;9:549.
- Rota-Stabelli O, Lartillot N, Philippe H, Pisani D. Serine codon-usage bias in deep phylogenomics: pancrustacean relationships as a case study. *Syst Biol.* 2013;62:121–33.
- Tammen SA, Friso S, Choi S-W. Epigenetics: the link between nature and nurture. *Mol Aspects Med.* 2013;34:753–64.
- Moffatt BA, Ashihara H. Purine and pyrimidine nucleotide synthesis and metabolism. *Arabidopsis Book.* 2002;1:e0018.
- Ehmsen JT, Ma TM, Sason H, Rosenberg D, Ogo T, Furuya S, et al. D-Serine in glia and neurons derives from 3-phosphoglycerate dehydrogenase. *J Neurosci.* 2013;33:12464–9.
- Jirásková-Vaničková J, Ettrich R, Vorlová B, Hoffman HE, Lepšík M, Jansa P, et al. Inhibition of human serine racemase, an emerging target for medicinal chemistry. *Curr Drug Targets.* 2011;12:1037–55.
- Campanini B, Spyraakis F, Peracchi A, Mozzarelli A. Serine racemase: a key player in neuron activity and in neuropathologies. *Front Biosci (Landmark Ed).* 2013;18:1112–28.
- Nomura DK, Casida JE. Activity-based protein profiling of organophosphorus and thiocarbamate pesticides reveals multiple serine hydrolase targets in mouse brain. *J Agric Food Chem.* 2011;59:2808–15.
- González M, Brito N, González C. High abundance of Serine/Threonine-rich regions predicted to be hyper-O-glycosylated in the secretory proteins coded by eight fungal genomes. *BMC Microbiol.* 2012;12:213.
- Horvat T, Zoldoš V, Lauc G. Evolutional and clinical implications of the epigenetic regulation of protein glycosylation. *Clin Epigenet.* 2011;2:425–32.
- Lauc G, Vojta A, Zoldoš V. Epigenetic regulation of glycosylation is the quantum mechanics of biology. *Biochim Biophys Acta.* 2014;1840:65–70.
- Zoldoš V, Grgurević S, Lauc G. Epigenetic regulation of protein glycosylation. *Biomol Concepts.* 2010;1:253–61.
- Jenny L, Ajjan R, King R, Thiel S, Schroeder V. Plasma levels of mannan-binding lectin-associated serine proteases MASP-1 and MASP-2 are elevated in type 1 diabetes and correlate with glycaemic control. *Clin Exp Immunol.* 2015;180:227–32.
- Meany DL, Chan DW. Aberrant glycosylation associated with enzymes as cancer biomarkers. *Clin Proteomics.* 2011;8:7.

26. Hwang H, Zhang J, Chung KA, Leverenz JB, Zabetian CP, Peskind ER, et al. Glycoproteomics in neurodegenerative diseases. *Mass Spectrom Rev.* 2010;29:79–125.
27. Jin J, Pawson T. Modular evolution of phosphorylation-based signalling systems. *Philos Trans R Soc Lond B: Biol Sci.* 2012;367:2540–55.
28. Laskar A, Rodger EJ, Chatterjee A, Mandal C. Modeling and structural analysis of PA clan serine proteases. *BMC Res Notes.* 2012;5:256.
29. Antalis TM, Buzza MS, Hodge KM, Hooper JD, Netzel-Arnett S. The cutting edge: membrane-anchored serine protease activities in the pericellular microenvironment. *Biochem J.* 2010;428:325–46.
30. Bao Y-Y, Qin X, Yu B, Chen L-B, Wang Z-C, Zhang C-X. Genomic insights into the serine protease gene family and expression profile analysis in the planthopper, *Nilaparvata lugens*. *BMC Genomics.* 2014;15:507.
31. Helbig AO, Gauci S, Raijmakers R, van Breukelen B, Slijper M, Mohammed S, et al. Profiling of N-acetylated protein termini provides in-depth insights into the N-terminal nature of the proteome. *Mol Cell Proteomics.* 2010;9:928–39.
32. Whitney JB, Hill AL, Sanisetty S, Penaloza-MacMaster P, Liu J, Shetty M, et al. Rapid seeding of the viral reservoir prior to SIV viraemia in rhesus monkeys. *Nature.* 2014;512:74–7.
33. Sanjuán R, Nebot MR, Chirico N, Mansky LM, Belshaw R. Viral mutation rates. *J Virol.* 2010;84:9733–48.
34. Raut R, Beesetti H, Tyagi P, Khanna I, Jain SK, Jeankumar VU, et al. A small molecule inhibitor of dengue virus type 2 protease inhibits the replication of all four dengue virus serotypes in cell culture. *Virol J.* 2015;12:16.
35. Reiser M, Timm J. Serine protease inhibitors as anti-hepatitis C virus agents. *Expert Rev Anti Infect Ther.* 2009;7:537–47.
36. Patick AK, Potts KE. Protease inhibitors as antiviral agents. *Clin Microbiol Rev.* 1998;11:614–27.
37. Saeed A, Baloch K, Brown RJP, Wallis R, Chen L, Dexter L, et al. Mannan binding lectin-associated serine protease 1 is induced by hepatitis C virus infection and activates human hepatic stellate cells. *Clin Exp Immunol.* 2013;174:265–73.
38. Drentin N, Conroy P, Gunzburg MJ, Pike RN, Wijeyewickrema LC. Investigation of the mechanism of interaction between Mannose-binding lectin-associated serine protease-2 and complement C4. *Mol Immunol.* 2015;67 Pt B:287–93.
39. Takahashi M, Mori S, Shigeta S, Fujita T. Role of MBL-associated serine protease (MASP) on activation of the lectin complement pathway. *Adv Exp Med Biol.* 2007;598:93–104.
40. Matsushita M. Ficolins: complement-activating lectins involved in innate immunity. *J Innate Immun.* 2010;2:24–32.
41. Degn SE, Jensen L, Hansen AG, Duman D, Tekin M, Jensenius JC, et al. Mannan-binding lectin-associated serine protease (MASP)-1 is crucial for lectin pathway activation in human serum, whereas neither MASP-1 nor MASP-3 is required for alternative pathway function. *J Immunol.* 2012;189:3957–69.
42. Upadhye V, Majumdar A, Gomashe A, Joshi D, Gangane N, Thamke D, et al. Inhibition of *Mycobacterium tuberculosis* secretory serine protease blocks bacterial multiplication both in axenic culture and in human macrophages. *Scand J Infect Dis.* 2009;41:569–76.
43. Koziel J, Potempa J. Protease-armed bacteria in the skin. *Cell Tissue Res.* 2013;351:325–37.
44. Murakami Y, Wada Y, Kobayashi H, Irie A, Hasegawa M, Yamanaka H, et al. Inhibition of *Aeromonas sobria* serine protease (ASP) by α 2-macroglobulin. *Biol Chem.* 2012;393:1193–200.
45. Navarro-Garcia F, Sonnested M, Teter K. Host-toxin interactions involving EspC and Pet, two serine protease autotransporters of the enterobacteriaceae. *Toxins (Basel).* 2010;2:1134–47.
46. Ruiz-Perez F, Nataro JP. Bacterial serine proteases secreted by the autotransporter pathway: classification, specificity, and role in virulence. *Cell Mol Life Sci.* 2014;71:745–70.
47. Hill DJ, Griffiths NJ, Borodina E, Virji M. Cellular and molecular biology of *Neisseria meningitidis* colonization and invasive disease. *Clin Sci (Lond).* 2010;118:547–64.
48. Reece ST, Loddenkemper C, Askew DJ, Zedler U, Schommer-Leitner S, Stein M, et al. Serine protease activity contributes to control of *Mycobacterium tuberculosis* in hypoxic lung granulomas in mice. *J Clin Invest.* 2010;120:3365–76.
49. Stork I, Gartemann K-H, Burger A, Eichenlaub R. A family of serine proteases of *Clavibacter michiganensis* subsp. *michiganensis*: chpC plays a role in colonization of the host plant tomato. *Mol Plant Pathol.* 2008;9:599–608.
50. Javed S, Ahmad M, Ahmad M, Abdin M, Hamid R, Khan M, et al. Chitinases: an update. *J Pharm Bioallied Sci.* 2013;5:21.
51. Lee CG, Da Silva CA, Dela Cruz CS, Ahangari F, Ma B, Kang M-J, et al. Role of chitin and chitinase/chitinase-like proteins in inflammation, tissue remodeling, and injury. *Annu Rev Physiol.* 2011;73:479–501.
52. Alam A, Bhatnagar RK, Relan U, Mukherjee P, Chauhan VS. Proteolytic activity of *Plasmodium falciparum* subtilisin-like protease 3 on parasite profilin, a multifunctional protein. *Mol Biochem Parasitol.* 2013;191:58–62.
53. Das P, De T, Chakraborti T. *Leishmania donovani* secretory serine protease alters macrophage inflammatory response via COX-2 mediated PGE-2 production. *Indian J Biochem Biophys.* 2014;51:542–51.
54. Serrano-Luna J, Piña-Vázquez C, Reyes-López M, Ortiz-Estrada G, de la Garza M. Proteases from *Entamoeba* spp. and pathogenic free-living amoebae as virulence factors. *J Trop Med.* 2013;2013:890603.
55. Pöll V, Denk U, Shen H-D, Panzani RC, Dissertori O, Lackner P, et al. The vacuolar serine protease, a cross-reactive allergen from *Cladosporium herbarum*. *Mol Immunol.* 2009;46:1360–73.
56. Gupta R, Sharma V, Sridhara S, Singh BP, Arora N. Identification of serine protease as a major allergen of *Curvularia lunata*. *Allergy.* 2004;59:421–7.
57. Snelgrove RJ, Gregory LG, Peiró T, Akthar S, Campbell GA, Walker SA, et al. Alternaria-derived serine protease activity drives IL-33-mediated asthma exacerbations. *J Allergy Clin Immunol.* 2014;134, 583.e6–592.e6.
58. Xu C-Y, Zhu H-M, Wu J-H, Wen H, Liu C-J. Increased permeability of blood-brain barrier is mediated by serine protease during *Cryptococcus meningitis*. *J Int Med Res.* 2014;42:85–92.
59. Kim J-S, Sapkota K, Park S-E, Choi B-S, Kim S, Nguyen TH, et al. A fibrinolytic enzyme from the medicinal mushroom *Cordyceps militaris*. *J Microbiol.* 2006;44:622–31.
60. Zheng S, Wang H, Zhang G. A novel alkaline protease from wild edible mushroom *Termitomyces albuminosus*. *Acta Biochim Pol.* 2011;58:269–73.
61. Guan G-P, Zhang G-Q, Wu Y-Y, Wang H-X, Ng T-B. Purification and characterization of a novel serine protease from the mushroom *Pholiota nameko*. *J Biosci Bioeng.* 2011;111:641–5.
62. Walton JD, Hallen-Adams HE, Luo H. Ribosomal biosynthesis of the cyclic peptide toxins of Amanita mushrooms. *Biopolymers.* 2010;94:659–64.
63. Yap H-YY, Fung S-Y, Ng S-T, Tan C-S, Tan N-H. Shotgun proteomic analysis of tiger milk mushroom (*Lignosus rhinocerotis*) and the isolation of a cytotoxic fungal serine protease from its sclerotium. *J Ethnopharmacol.* 2015;174:437–51.
64. Zhang G, Wang H, Zhang X, Ng T. Helvellisin, a novel alkaline protease from the wild ascomycete mushroom *Helvella lacunosa*. *J Biosci Bioeng.* 2010;109:20–4.
65. Merzendorfer H, Zimoch L. Chitin metabolism in insects: structure, function and regulation of chitin synthases and chitinases. *J Exp Biol.* 2003;206 Pt 24:4393–412.

66. Muszewska A, Taylor JW, Szczesny P, Grynberg M. Independent subtilases expansions in fungi associated with animals. *Mol Biol Evol.* 2011;28:3395–404.
67. Molehin AJ, Gobert GN, McManus DP. Serine protease inhibitors of parasitic helminths. *Parasitology.* 2012;139:681–95.
68. Yang Y, Jun Wen Y, Cai YN, Vallée I, Boireau P, Liu MY, et al. Serine proteases of parasitic helminths. *Korean J Parasitol.* 2015;53:1–11.
69. Donnelly S, Dalton JP, Loukas A. Proteases in helminth- and allergen-induced inflammatory responses. *Chem Immunol Allergy.* 2006;90:45–64.
70. Dumez M-E, Herman J, Campizi V, Galleni M, Jacquet A, Chevigné A. Orchestration of an uncommon maturation cascade of the house dust mite protease allergen quartet. *Front Immunol.* 2014;5:138.
71. Wan H, Winton HL, Soeller C, Taylor GW, Gruenert DC, Thompson PJ, et al. The transmembrane protein occludin of epithelial tight junctions is a functional target for serine peptidases from faecal pellets of *Dermatophagoides pteronyssinus*. *Clin Exp Allergy.* 2001;31:279–94.
72. Zhang H, Zeng X, He S. Evaluation on potential contributions of protease activated receptors related mediators in allergic inflammation. *Mediat Inflamm.* 2014;2014:829068.
73. Kempkes C, Buddenkotte J, Cevikbas F, Buhl T, Steinhoff M. Role of PAR-2 in neuroimmune communication and itch. CRC Press; 2014.
74. Chapman MD, Wünschmann S, Pomés A. Proteases as Th2 adjuvants. *Curr Allergy Asthma Rep.* 2007;7:363–7.
75. Sudha VT, Arora N, Gaur SN, Pasha S, Singh BP. Identification of a serine protease as a major allergen (Per a 10) of *Periplaneta americana*. *Allergy.* 2008;63:768–76.
76. Louati H, Zouari N, Miled N, Gargouri Y. A new chymotrypsin-like serine protease involved in dietary protein digestion in a primitive animal, *Scorpio maurus*: purification and biochemical characterization. *Lipids Health Dis.* 2011;10:121.
77. Devaraja S, Nagaraju S, Mahadeswaraswamy YH, Girish KS, Kemparaju K. A low molecular weight serine protease: purification and characterization from *Hippasa agelenoides* (funnel web) spider venom gland extract. *Toxicon.* 2008;52:130–8.
78. Veiga SS, da Silveira RB, Dreyfus JL, Haoach J, Pereira AM, Mangili OC, et al. Identification of high molecular weight serine-proteases in *Loxosceles intermedia* (brown spider) venom. *Toxicon.* 2000;38:825–39.
79. Danielli A, Loukeris TG, Lagueux M, Müller HM, Richman A, Kafatos FC. A modular chitin-binding protease associated with hemocytes and hemolymph in the mosquito *Anopheles gambiae*. *Proc Natl Acad Sci USA.* 2000;97:7136–41.
80. Borges-Veloso A, Saboia-Vahia L, Dias-Lopes G, Domont GB, Britto C, Cuervo P, et al. In-depth characterization of trypsin-like serine peptidases in the midgut of the sugar fed *Culex quinquefasciatus*. *Parasit Vectors.* 2015;8:373.
81. Rossano R, Larocca M, Polito T, Perna AM, Padula MC, Martelli G, et al. What are the proteolytic enzymes of honey and what they do tell us? A fingerprint analysis by 2-D zymography of unifloral honeys. *PLoS ONE.* 2012;7:e49164.
82. Praxedes-Garcia P, Cruz-Silva I, Gozzo AJ, Abreu Nunes V, Torquato RJ, Tanaka AS, et al. Biochemical aspects of a serine protease from *Caesalpinia echinata* Lam. (Brazilwood) seeds: a potential tool to access the mobilization of seed storage proteins. *Sci World J.* 2012;2012:562715.
83. Vinhas R, Cortes L, Cardoso I, Mendes VM, Manadas B, Todo-Bom A, et al. Pollen proteases compromise the airway epithelial barrier through degradation of transmembrane adhesion proteins and lung bioactive peptides. *Allergy.* 2011;66:1088–98.
84. Runswick S, Mitchell T, Davies P, Robinson C, Garrod DR. Pollen proteolytic enzymes degrade tight junctions. *Respirology.* 2007;12:834–42.
85. Ibrahim ARN, Kawamoto S, Mizuno K, Shimada Y, Rikimaru S, Onishi N, et al. Molecular cloning and immunochemical characterization of a new Japanese cedar pollen allergen homologous to plant subtilisin-like serine protease. *World Allergy Organ J.* 2010;3:262–5.
86. Gunawan H, Takai T, Ikeda S, Okumura K, Ogawa H. Protease activity of allergenic pollen of cedar, cypress, juniper, birch and ragweed. *Allergol Int.* 2008;57:83–91.
87. Raftery MJ, Saldanha RG, Geczy CL, Kumar RK. Mass spectrometric analysis of electrophoretically separated allergens and proteases in grass pollen diffusates. *Respir Res.* 2003;4:10.
88. Patel GK, Kawale AA, Sharma AK. Purification and physico-chemical characterization of a serine protease with fibrinolytic activity from latex of a medicinal herb *Euphorbia hirta*. *Plant Physiol Biochem PPB.* 2012;52:104–11.
89. Singh SJ, Singh LR, Devi SK, Singh SS, Devi CB, Rully H. Purification and characterization of a thermostable caseinolytic serine protease from the latex of *Euphorbia heterophylla* L. *Protein Pept Lett.* 2015;22:828–35.
90. Sharma A, Kumari M, Jagannadham MV. Benghalensin, a highly stable serine protease from the latex of medicinal plant *Ficus benghalensis*. *J Agric Food Chem.* 2009;57:11120–6.
91. Raskovic B, Bozovic O, Prodanovic R, Niketic V, Polovic N. Identification, purification and characterization of a novel collagenolytic serine protease from fig (*Ficus carica* var. Brown Turkey) latex. *J Biosci Bioeng.* 2014;118:622–7.
92. Siritapetawee J, Thumanu K, Sojikul P, Thammasirirak S. A novel serine protease with human fibrinolytic activities from *Artocarpus heterophyllus* latex. *Biochim Biophys Acta.* 2012;1824:907–12.
93. Tomar R, Kumar R, Jagannadham MV. A stable serine protease, wrightin, from the latex of the plant *Wrightia tinctoria* (Roxb.) R. Br.: purification and biochemical properties. *J Agric Food Chem.* 2008;56:1479–87.
94. Sytwala S, Domsalla A, Melzig MF. Investigation of plant latexes of Asteraceae and Campanulaceae regarding proteolytic activity. *Plant Physiol Biochem PPB.* 2015;97:117–23.
95. Asero R. Tomato allergy: clinical features and usefulness of current routinely available diagnostic methods. *J Investig Allergol Clin Immunol.* 2013;23:37–42.
96. Mascheri A, Farioli L, Pravettoni V, Piantanida M, Stafylaraki C, Scibilia J, et al. Hypersensitivity to tomato (*Lycopersicon esculentum*) in peach-allergic patients: rPrup 3 and rPrup 1 are predictive of symptom severity. *J Investig Allergol Clin Immunol.* 2015;25:183–9.
97. Amid M, Shuhaimi M, Islam Sarker MZ, Abdul Manap MY. Purification of serine protease from mango (*Mangifera Indica* Cv. Chokanan) peel using an alcohol/salt aqueous two phase system. *Food Chem.* 2012;132:1382–6.
98. Cummings RD, Etzler ME. R-type lectins. Cold Spring Harbor Laboratory Press; 2009.
99. Jashni MK, Dols IHM, Iida Y, Boeren S, Beenen HG, Mehrabi R, et al. Synergistic action of a metalloprotease and a serine protease from *Fusarium oxysporum* f. sp. lycopersici cleaves chitin-binding tomato chitinases, reduces their antifungal activity, and enhances fungal virulence. *Mol Plant Microbe Interact.* 2015;28:996–1008.
100. Ahmed SM, Ahmed M, Nadeem A, Mahajan J, Choudhary A, Pal J. Emergency treatment of a snake bite: pearls from literature. *J Emerg Trauma Shock.* 2008;1:97–105.
101. Vaiyapuri S, Thiyagarajan N, Hutchinson EG, Gibbins JM. Sequence and phylogenetic analysis of viper venom serine proteases. *Bioinformation.* 2012;8:763–72.
102. Menaldo DL, Bernardes CP, Santos-Filho NA, de L, Moura A, Fuly AL, et al. Biochemical characterization and comparative

- analysis of two distinct serine proteases from *Bothrops pirajai* snake venom. *Biochimie*. 2012;94:2545–58.
103. Kaplan AP, Joseph K. Pathogenic mechanisms of bradykinin mediated diseases: dysregulation of an innate inflammatory pathway. *Adv Immunol*. 2014;121:41–89.
 104. Ayres LR, Récio ADR, Burin SM, Pereira JC, Martins AC, Sampaio SV, et al. Bothrops snake venoms and their isolated toxins, an L-amino acid oxidase and a serine protease, modulate human complement system pathways. *J Venom Anim Toxins Incl Trop Dis*. 2015;21:29.
 105. Fry BG, Wroe S, Teeuwisse W, van Osch MJP, Moreno K, Ingle J, et al. A central role for venom in predation by *Varanus komodoensis* (Komodo Dragon) and the extinct giant *Varanus (Megalania) priscus*. *Proc Natl Acad Sci U S A*. 2009;106:8969–74.
 106. Ketnawa S, Benjakul S, Ling TC, Martínez-Alvarez O, Rawdkuen S. Enhanced recovery of alkaline protease from fish viscera by phase partitioning and its application. *Chem Cent J*. 2013;7:79.
 107. Matsuura Y, Yabu T, Shiba H, Moritomo T, Nakanishi T. Purification and characterization of a fish granzymeA involved in cell-mediated immunity. *Dev Comp Immunol*. 2016;60:33–40.
 108. Karn RC, Chung AG, Laukaitis CM. Shared and unique proteins in human, mouse and rat saliva proteomes: footprints of functional adaptation. *Proteomes*. 2013;1:275–89.
 109. Rytönen-Nissinen M, Saarelainen S, Randell J, Häyrynen J, Kalkkinen N, Virtanen T. IgE reactivity of the dog lipocalin allergen can f 4 and the development of a sandwich ELISA for its quantification. *Allergy Asthma Immunol Res*. 2015;7:384–92.
 110. Costa F, Wunder EA, De Oliveira D, Bisht V, Rodrigues G, Reis MG, et al. Patterns in leptospira shedding in Norway rats (*Rattus norvegicus*) from Brazilian slum communities at high risk of disease transmission. *PLoS Negl Trop Dis*. 2015;9:e0003819.
 111. Madhusudana SN, Sukumaran SM. Antemortem diagnosis and prevention of human rabies. *Ann Indian Acad Neurol*. 2008;11:3–12.
 112. Ohler A, Becker-Pauly C. TMPRSS4 is a type II transmembrane serine protease involved in cancer and viral infections. *Biol Chem*. 2012;393:907–14.
 113. Voegeli R, Rawlings AV, Doppler S, Heiland J, Schreiber T. Profiling of serine protease activities in human stratum corneum and detection of a stratum corneum trypsin-like enzyme. *Int J Cosmet Sci*. 2007;29:191–200.
 114. Voegeli R, Rawlings AV, Breternitz M, Doppler S, Schreiber T, Fluhr JW. Increased stratum corneum serine protease activity in acute eczematous atopic skin. *Br J Dermatol*. 2009;161:70–7.
 115. Esumi M, Ishibashi M, Yamaguchi H, Nakajima S, Tai Y, Kikuta S, et al. Transmembrane serine protease TMPRSS2 activates hepatitis C virus infection. *Hepatology*. 2015;61:437–46.
 116. Böttcher E, Matrosovich T, Beyerle M, Klenk H-D, Garten W, Matrosovich M. Proteolytic activation of influenza viruses by serine proteases TMPRSS2 and HAT from human airway epithelium. *J Virol*. 2006;80:9896–8.
 117. Zhou Y, Vedantham P, Lu K, Agudelo J, Carrion R, Nunneley JW, et al. Protease inhibitors targeting coronavirus and filovirus entry. *Antiviral Res*. 2015;116:76–84.
 118. Shea-Donohue T, Zhao A, Antalis TM. SerpinB2 mediated regulation of macrophage function during enteric infection. *Gut Microbes*. 2014;5:254–8.
 119. Sanderson-Smith ML, De Oliveira DMP, Ranson M, McArthur JD. Bacterial plasminogen receptors: mediators of a multifaceted relationship. *J Biomed Biotechnol*. 2012;2012:272148.
 120. Lorkowski G. Gastrointestinal absorption and biological activities of serine and cysteine proteases of animal and plant origin: review on absorption of serine and cysteine proteases. *Int J Physiol Pathophysiol Pharmacol*. 2012;4:10–27.
 121. Chang M, Kistler EB, Schmid-Schönbein GW. Disruption of the mucosal barrier during gut ischemia allows entry of digestive enzymes into the intestinal wall. *Shock*. 2012;37:297–305.
 122. Ohmuraya M, Yamamura K. Roles of serine protease inhibitor Kazal type 1 (SPINK1) in pancreatic diseases. *Exp Anim*. 2011;60:433–44.
 123. Liu H, Chen J, Wang X, Yan S, Xu Y, San M, et al. Functional characterization of a new non-Kunitz serine protease inhibitor from the scorpion *Lychas mucronatus*. *Int J Biol Macromol*. 2015;72:158–62.
 124. Negulescu H, Guo Y, Garner TP, Goodwin OY, Henderson G, Laine RA, et al. A Kazal-type serine protease inhibitor from the defense gland secretion of the subtropical termite *Coptotermes formosanus shiraki*. *PLOS ONE*. 2015;10:e0125376.
 125. Wan H, Lee KS, Kim BY, Zou FM, Yoon HJ, Je YH, et al. A spider-derived Kunitz-type serine protease inhibitor that acts as a plasmin inhibitor and an elastase inhibitor. *PLoS ONE*. 2013;8:e53343.
 126. Chmelar J, Calvo E, Pedra JHF, Francischetti IMB, Kotsyfakis M. Tick salivary secretion as a source of antihemostatics. *J Proteomics*. 2012;75:3842–54.
 127. Jouiaei M, Casewell NR, Yanagihara AA, Nouwens A, Cribb BW, Whitehead D, et al. Firing the sting: chemically induced discharge of cnidae reveals novel proteins and peptides from box jellyfish (*Chironex fleckeri*) venom. *Toxins (Basel)*. 2015;7:936–50.
 128. Pomin VH, Mourão PAS. Specific sulfation and glycosylation—a structural combination for the anticoagulation of marine carbohydrates. *Front Cell Infect Microbiol*. 2014;4:33.
 129. Chen Z, Wang B, Hu J, Yang W, Cao Z, Zhuo R, et al. SjAPI, the first functionally characterized Ascaris-type protease inhibitor from animal venoms. *PLoS ONE*. 2013;8:e57529.
 130. Shibao PYT, Anjolette FAP, Lopes NP, Arantes EC. First serine protease inhibitor isolated from *Rhinella schneideri* poison. *J Venom Anim Toxins Incl Trop Dis*. 2015;21:30.
 131. Sabotič J, Bleuler-Martinez S, Renko M, Avanzo Caglič P, Kallert S, Štrukelj B, et al. Structural basis of trypsin inhibition and entomotoxicity of cospin, serine protease inhibitor involved in defense of *Coprinopsis cinerea* fruiting bodies. *J Biol Chem*. 2012;287:3898–907.
 132. Hartl M, Giri AP, Kaur H, Baldwin IT. The multiple functions of plant serine protease inhibitors: defense against herbivores and beyond. *Plant Signal Behav*. 2011;6:1009–11.
 133. Carrillo L, Herrero I, Cambra I, Sánchez-Monge R, Diaz I, Martínez M. Differential in vitro and in vivo effect of barley cysteine and serine protease inhibitors on phytopathogenic microorganisms. *Plant Physiol Biochem PPB*. 2011;49:1191–200.
 134. Wang W, Wang S-X, Guan H-S. The antiviral activities and mechanisms of marine polysaccharides: an overview. *Mar Drugs*. 2012;10:2795–816.
 135. Tian M, Win J, Song J, van der Hoorn R, van der Knaap E, Kamoun S. A *Phytophthora infestans* cystatin-like protein targets a novel tomato papain-like apoplastic protease. *Plant Physiol*. 2007;143:364–77.
 136. Ou K, Seow TK, Liang RC, Lee BW, Goh DL, Chua KY, et al. Identification of a serine protease inhibitor homologue in Bird's Nest by an integrated proteomics approach. *Electrophoresis*. 2001;22:3589–95.
 137. Biagini Myers JM, Martin LJ, Kovacic MB, Mersha TB, He H, Pilipenko V, et al. Epistasis between serine protease inhibitor Kazal-type 5 (SPINK5) and thymic stromal lymphopoietin (TSLP) genes contributes to childhood asthma. *J Allergy Clin Immunol*. 2014;134, 891.e3–899.e3.
 138. Kuwar SS, Pauchet Y, Vogel H, Heckel DG. Adaptive regulation of digestive serine proteases in the larval midgut of *Helicoverpa armigera* in response to a plant protease inhibitor. *Insect Biochem Mol Biol*. 2015;59:18–29.

139. Dunkelberger JR, Song W-C. Complement and its role in innate and adaptive immune responses. *Cell Res.* 2010;20:34–50.
140. Degn SE, Thiel S. Humoral pattern recognition and the complement system. *Scand J Immunol.* 2013;78:181–93.
141. Carroll MC. Complement and humoral immunity. *Vaccine.* 2008;26 Suppl. 8:128–33.
142. Nesargikar PN, Spiller B, Chavez R. The complement system: history, pathways, cascade and inhibitors. *Eur J Microbiol Immunol (Bp).* 2012;2:103–11.
143. Noris M, Remuzzi G. Overview of complement activation and regulation. *Semin Nephrol.* 2013;33:479–92.
144. Hovnanian A. Netherton syndrome: skin inflammation and allergy by loss of protease inhibition. *Cell Tissue Res.* 2013;351:289–300.
145. Kaminsky V, Zhivotovsky B. Proteases in autophagy. *Biochim Biophys Acta.* 2012;1824:44–50.
146. Lin F, Qin Z-H. Degradation of misfolded proteins by autophagy: is it a strategy for Huntington's disease treatment? *J Huntingtons Dis.* 2013;2:149–57.
147. García-Fernández R, Perbandt M, Rehders D, Ziegelmeüller P, Piganeau N, Hahn U, et al. Three-dimensional structure of a kunitz-type inhibitor in complex with an elastase-like enzyme. *J Biol Chem.* 2015;290:14154–65.
148. Pannkuk EL, Risch TS, Savary BJ. Isolation and identification of an extracellular subtilisin-like serine protease secreted by the bat pathogen *Pseudogymnoascus destructans*. *PLOS ONE.* 2015;10:e0120508.
149. Kzhyshkowska J, Gratchev A, Goerdts S. Human chitinases and chitinase-like proteins as indicators for inflammation and cancer. *Biomark Insights.* 2007;2:128–46.
150. Li S, Yang X, Yang S, Zhu M, Wang X. Technology prospecting on enzymes: application, marketing and engineering. *Comput Struct Biotechnol J.* 2012;2:e201209017.
151. Florsheim E, Yu S, Bragatto I, Faustino L, Gomes E, Ramos RN, et al. Integrated innate mechanisms involved in airway allergic inflammation to the serine protease subtilisin. *J Immunol.* 2015;194:4621–30.
152. Minor KL, Anderson VL, Davis KS, Van Den Berg AH, Christie JS, Löbach L, et al. A putative serine protease, SpSsp1, from *Saprolegnia parasitica* is recognised by sera of rainbow trout, *Oncorhynchus mykiss*. *Fungal Biol.* 2014;118:630–9.
153. Choudhury R, Das P, De T, Chakraborti T. 115 kDa serine protease confers sustained protection to visceral leishmaniasis caused by *Leishmania donovani* via IFN- γ induced down-regulation of TNF- α mediated MMP-9 activity. *Immunobiology.* 2013;218:114–26.
154. Chien J, Campioni M, Shridhar V, Baldi A. HtrA serine proteases as potential therapeutic targets in cancer. *Curr Cancer Drug Targets.* 2009;9:451–68.
155. Chen W, Mempel M, Schober W, Behrendt H, Ring J. Gender difference, sex hormones, and immediate type hypersensitivity reactions. *Allergy.* 2008;63:1418–27.
156. Thompson LC, Goswami S, Ginsberg DS, Day DE, Verhamme IM, Peterson CB. Metals affect the structure and activity of human plasminogen activator inhibitor-1. I. Modulation of stability and protease inhibition. *Protein Sci.* 2011;20:353–65.
157. Saisawang C, Saitornuang S, Sillapee P, Ubol S, Smith DR, Ketterman AJ. Chikungunya nsP2 protease is not a papain-like cysteine protease and the catalytic dyad cysteine is interchangeable with a proximal serine. *Sci Rep.* 2015;5:17125.
158. Chang L, Munsaka SM, Kraft-Terry S, Ernst T. Magnetic resonance spectroscopy to assess neuroinflammation and neuropathic pain. *J Neuroimmune Pharmacol.* 2013;8:576–93.
159. Barbierato M, Facci L, Argentini C, Marinelli C, Skaper SD, Giusti P. Astrocyte-microglia cooperation in the expression of a pro-inflammatory phenotype. *CNS Neurol Disord Drug Targets.* 2013;12:608–18.