



ORIGINAL ARTICLE

Squamocin, an annonaceous acetogenin, enhances naphthalene degradation mediated by *Bacillus atrophaeus* CN4



Eduardo A. Parellada^{a,*}, Mercedes Igarza^a, Paula Isacc^b, Alicia Bardón^a,
Marcela Ferrero^b, Keshav Lalit Ameta^c, Adriana Neske^a

^a Instituto de Química Orgánica, Facultad de Bioquímica, Química y Farmacia Universidad Nacional de Tucumán, Ayacucho 471, Tucumán (4000), Argentina

^b PROIMI-CONICET, Av. Belgrano y Pje, Caseros, Tucumán (4000), Argentina

^c Department of Chemistry, Faculty of Arts, Science and Commerce, Mody University of Science and Technology, Lakshmanagarh 332311, Rajasthan, India

Received 5 May 2016; accepted 20 March 2017

Available online 26 May 2017

KEYWORDS

Biofilm;
Gram-positive
bacteria;
Squamocin;
Bacillus atrophaeus
CN4;
Naphthalene
degradation

Abstract Squamocin belongs to a group of compounds called annonaceous acetogenins. They are secondary products of *Annonaceae* metabolism and can be isolated from *Annona cherimolia* seeds. This paper deals with the stimulation of biofilm formation of *Bacillus atrophaeus* CN4 by employing low squamocin concentrations to increase naphthalene degradation. *Bacillus atrophaeus* CN4, isolated from contaminated soil, has the ability to degrade naphthalene as the only source of carbon and energy. In the absence of additional carbon sources, the strain removed 69% of the initial concentration of naphthalene (approx. 0.2 mmol/l) in the first 12 h of incubation. The addition of squamocin in LB medium stimulated *Bacillus atrophaeus* CN4 biofilm formation and enhanced naphthalene removal. Squamocin (2.5 µg/ml) does not affect planktonic growth and therefore, the observed increases are solely due to the stimulation of biofilm formation.

© 2017 Asociación Argentina de Microbiología. Published by Elsevier España, S.L.U. This is an open access article under the CC BY-NC-ND license (<http://creativecommons.org/licenses/by-nc-nd/4.0/>).

* Corresponding author.

E-mail address: eaparellada@hotmail.com (E.A. Parellada).

PALABRAS CLAVE

Biofilm;
Bacterias Gram
positivas;
Squamocin;
Bacillus atrophaeus
CN4;
Degradación
de naftaleno

Squamocin, una acetogenina anonácea, estimula la degradación de naftaleno mediada por *Bacillus atrophaeus* CN4

Resumen Squamocin pertenece a un grupo de compuestos llamados acetogeninas anonáceas (ACG). Las ACG son productos secundarios del metabolismo de plantas de la familia Annonaceae y se pueden aislar a partir de semillas de *Annona cherimola*. Este artículo trata de la estimulación de la formación de biofilm de *Bacillus atrophaeus* CN4 mediante el empleo de bajas concentraciones de squamocin para optimizar la degradación de naftaleno. *B. atrophaeus* CN4, aislado de suelo contaminado, tiene la capacidad de emplear naftaleno como única fuente de carbono y energía. En ausencia de fuentes de carbono adicionales, la cepa degradó el 69% de la concentración inicial de naftaleno (aprox. 0,2 mmol/l) en las primeras 12 h de incubación. La adición de squamocin en medio LB estimula la formación de biofilm y la remoción de naftaleno de *B. atrophaeus* CN4. Squamocin (2,5 µg/ml) no afecta al crecimiento planctónico y, por lo tanto, los incrementos observados se deben únicamente a la estimulación de la formación de biofilm.

© 2017 Asociación Argentina de Microbiología. Publicado por Elsevier España, S.L.U. Este es un artículo Open Access bajo la licencia CC BY-NC-ND (<http://creativecommons.org/licenses/by-nc-nd/4.0/>).

Introduction

Biofilm formation is a very common survival strategy in the bacterial world. In fact, a large number of bacteria in nature have developed the ability to adopt a protected mode of growth. Such is the case of biofilm-forming bacteria. Protected by a polymeric matrix, bacteria within biofilms can survive the harmful action of various physical and chemical agents and may also establish more effective communication mechanisms⁴.

With this in mind, it is easier to understand the importance of stimulating biofilm formation of bacterial populations that are forced to grow in high environmental stress conditions, for instance, polycyclic aromatic hydrocarbons (PAHs) degrading strains^{15–17}.

Cartagena et al.² studied a series of compounds with lactonic groups in their structures that stimulate or inhibit *Pseudomonas aeruginosa* biofilm formation. Among them, squamocin, even in a 0.25 µg/ml concentration, was able to stimulate biofilm formation significantly. They also reported that 2.5 µg/ml may cause an even higher stimulation.

Annonaceous acetogenins (ACG) such as squamocin are the secondary products of Annonaceae family plant metabolism. Several members of this plant family are common and widespread in South America. ACG constitute a family of compounds whose general structure consists of a long hydrocarbon chain containing different oxygenated moieties. Particularly, squamocin has 37 carbon atoms, 2 tetrahydrofuranic rings, a terminal lactonic group and 3 hydroxylic moieties distributed along its carbon chain⁷. Various biological activities of squamocin have been reported, most of them related to the inhibition of cellular respiration and its insecticidal activity¹⁹ and by its ability to stimulate biofilm production and to increase the rate of naphthalene degradation by nonspecific association with hydrophobic cell materials in a PAH-degrading strain called *Pseudomonas plecoglossicida* J26¹⁷. Furthermore, Parellada et al.¹⁵ described the effect of different squamocin concentrations (2.5, 25, 50 and 100 µg/ml) on the biofilm formation of *Pseudomonas plecoglossicida*

J26, a naphthalene-degrading strain. They observed that 2.5 µg/ml squamocin concentrations stimulated biofilm production although the increase in concentration did not produce higher stimulations. Hence, the 2.5 µg/ml concentration was chosen for the assays with *Bacillus atrophaeus* CN4 presented in this paper.

PAHs are highly hydrophobic and poorly biodegradable compounds consisting of fused benzene rings in different configurations. PAH volatility, carcinogenicity and capability to bioaccumulate vary depending on their molecular weight. Among them, naphthalene is ubiquitous in the home environment and several authors have proposed it as a useful model for comprehending the behavior of other PAHs^{9,11,20}.

The strain employed for the present study (called CN4 and subsequently identified as *Bacillus atrophaeus*) was previously isolated from oil-contaminated soil using a PAH-enrichment technique. *B. atrophaeus* is a gram-positive, aerobic, endospore-forming, rod-shaped bacterium whose description is almost identical to that of *Bacillus subtilis* except for the production of a pigment on media containing an organic nitrogen source¹³. Some strains of *B. atrophaeus* have been reported for their ability to produce biosurfactants, i.e. *B. atrophaeus* ATCC 9372⁵. Others have shown antifungal activity (*B. atrophaeus* CAB-1)²².

The overall purpose of the research presented in this article was to unveil the effects of squamocin on naphthalene degradation mediated by a gram-positive bacterium. To this end, it is necessary to first demonstrate the ability of the strains to use naphthalene as the sole carbon source. This study seeks to establish a relationship between naphthalene degradation and biofilm formation.

Materials and methods

Squamocin isolation, purification and characterization

The procedures for the treatment of plant material, extraction, purification and structural elucidation of squamocin

have been widely reported^{7,15,16}. Here we present a summary of these procedures.

Squamocin was isolated from *Annona cherimolia* seeds obtained from "chirimoya" fruits. Dried and powdered seeds were extracted with methanol. Solvent was then evaporated and the extract partitioned first in a mixture of chloroform and H₂O (1:1) and then with hexane:methanol (1:1). Squamocin was contained in this methanolic sub-extract. Water solubility of ACGs was negligible. All procedures were monitored using TLC with Kedde's reagent. The next step was squamocin isolation and purification from the methanolic sub-extract, which was accomplished by column chromatography and further purification by RP-HPLC of the obtained fractions. Structural elucidation of squamocin was assessed by spectroscopic and spectrometric techniques (IR, ¹H-NMR, ¹³C-NMR, and MS) by comparison with data reported by Fujimoto et al.⁷.

Squamocin stock solutions 1 mg/ml and 100 µg/ml in ethanol (96%) were prepared. These solutions were used in all the assays performed in this work.

Chemicals, bacterial strain and growth conditions

The naphthalene (>99% purity) used in the degradation experiments was purchased from Sigma-Aldrich Co. (St. Louis, MO, USA). All chemicals used in this study were analytical grade and acquired from standard manufacturers.

B. atrophaeus CN4 was isolated from 15-day enrichment cultures of oil-contaminated soil in Argentina according to their capability to grow as pure cultures in minimal medium (MM) added with 1 mmol/l naphthalene as carbon and energy source. The strain was grown at 28 °C in Luria-Bertani (LB) agar medium in contact with naphthalene vapors to promote a bacterial resistance phenotype.

LB and MM media were used during microbiological determinations. LB contains (in g/l) 5 meat peptone; 2.5 yeast extract and 20 NaCl. CFU/ml were determined on solid LB agar medium containing agar (1.5% w/v). MM is composed as follows: 24.7 g/l NaCl, 6.3 g/l MgSO₄·7H₂O, 4.6 g/l MgCl₂·H₂O, 2 g/l NH₄Cl, 0.7 g/l KCl, 0.6 g/l CaCl₂, 200 mg/l NaHCO₃, 100 mg/l K₂HPO₄, 20 mg/l FeSO₄·7 H₂O and bidistilled water.

For bacterial identification, total DNA from a pure culture was extracted by the CTAB method⁶. DNA quality and quantity from the several sources were checked in 0.8%. Universal primers 8f and 1492r (corresponding to position 8–27 and 1541–1522, respectively in the 16S rDNA sequence of *Escherichia coli*) were used to amplify the 16S rDNA by PCR, as previously described²¹. The amplicon was sequenced by Macrogen Inc., Seoul, Korea.

Preparation of *B. atrophaeus* CN4 inocula

Individual colonies were picked, inoculated in LB broth and incubated for 24 h (28 °C, standing incubation). A 10% (v/v) aliquot of this culture was transferred to inoculate fresh LB broth, but this time only for 14 h, which was employed as *B. atrophaeus* CN4 inoculum. Another aliquot of the inoculum was appropriately diluted and plated on solid LB agar medium for determination of CFU/ml. The inoculum of *B. atrophaeus* CN4 had an OD₆₀₀ = 0.645 corresponding to a plate count of approx. 7.53 × 10¹² CFU/ml. A similar

inoculum was used in the assays described in sections 'Squamocin effects on biofilm formation, naphthalene degradation and cell growth' and 'Biosurfactant/bioemulsifier production'.

An inoculum prepared as described in the preceding paragraph was centrifuged and the pellet was washed three times with sterile PBS buffer and resuspended in an equal volume of sterile MM. This cell suspension was used as the inoculum in the naphthalene removal assay in the absence of other carbon sources described in section 'Naphthalene removal in the absence of other carbon sources'.

Naphthalene removal in the absence of other carbon sources

Three series of screw cap tubes with MM culture broth were prepared to determine *B. atrophaeus* CN4 capacity to remove dissolved or suspended naphthalene in an aqueous medium free from any other carbon source. The first series contained 0.2 mmol/l naphthalene (stock solutions 100 mmol/l in ethanol) and was inoculated in a 10% (v/v) with a *B. atrophaeus* CN4 cell suspension in MM medium. The second series did not contain naphthalene, but was inoculated in the same way as the first one. The third series (sterile series) only had MM medium with naphthalene in the same concentration as in the first one. The final volume was adjusted to 3 ml in all incubations; with ethanol in the series without naphthalene and with MM medium in the sterile series.

The tubes were incubated in the dark at 28 °C without shaking. Cellular growth and residual naphthalene concentration were measured every 4 h for 12 h. The former was quantified by plate count while the latter was assessed by RP-HPLC and a calibration curve (see following section).

The concentration measurement of residual naphthalene in the sterile series was performed to evaluate abiotic losses. Furthermore, samples of the tubes without naphthalene were chromatographed to discard the possibility that some other compound might produce a peak with a similar retention time as that of naphthalene. Hydrocarbon removal was quantified considering the PAH loss occurred in the sterile control series. Cell growth measurements in the series without naphthalene were used to eliminate the possibility that *Bacillus atrophaeus* CN4 might use some compound of the MM medium as energy source.

Determination of residual naphthalene concentration

Naphthalene quantification was performed as follows. The tubes were vortexed for 30 s and 500 µl aliquots were transferred from the tubes to a 5 ml volumetric flask and brought to volume with bidistilled methanol in order to stop growth and dissolve residual naphthalene. At this stage, the naphthalene that could be chemically adsorbed to cell material was transferred to the organic phase. Next, prepared samples were filtered through 0.22 µm nylon filters (Microclar, Argentina) to separate cells and stored at –20 °C until analysis. Naphthalene quantification was carried out by RP-HPLC (Perkin Elmer 200 series chromatograph; UV/visible spectrophotometric detector fixed at λ [nm] = 276; 600 series analogical interphase). A C8 column (25 × 1 cm i.d., 10 µm particle size) was employed and a methanol–water (9:1)

solution was used as mobile phase ($F=1.5$ ml/min). Peak areas were calculated with a peak analyzer (Total Chrom analyser) and naphthalene concentrations were estimated by a calibration curve and expressed as mmol/l¹⁶.

Squamocin effects on biofilm formation, naphthalene degradation and cell growth

Quantification of biofilm formation on glass beads

Naphthalene and biofilm were quantified simultaneously. *B. atrophaeus* CN4 biofilm biomass quantification in the presence of squamocin was performed by crystal violet (CV) staining¹⁴. Measurements were performed at 0, 4, 8 and 12 h of standing incubation. A series of 8 ml screw cap glass tubes, 10 for each time, 5 per treatment (in the presence or absence of squamocin) were prepared. Tubes contained: 3 g of 4 mm diameter glass beads to serve as an abiotic surface to support biofilm formation, 3500 μ l of LB medium, 10 μ l of a squamocin ethanolic solution (1 mg/ml) (final concentration 2.5 μ g/ml); equivalent quantities of EtOH were placed in control assays) and 40 μ l of a naphthalene ethanolic solution (100 mmol/l) (final concentration approx. 1 mmol/l). The distance between the beads and the liquid-air interface is very short so oxygen may adequately diffuse. Tubes were later inoculated with 400 μ l (10%, v/v) of a 14 h LB cell culture ($OD_{600nm}=0.6$; 10^{12} CFU/ml approx.) of *B. atrophaeus* CN4. Non-inoculated tubes were used as abiotic control. Once inoculated, the glass tubes were incubated without shaking at 28 °C for 0, 4, 8 and 12 h and aliquots of 500 μ l were taken from the corresponding tubes for naphthalene quantification assays (see section 'Naphthalene degradation in the presence of squamocin'). Then, 100 μ l of crystal violet solution (1%) were added to each tube and incubated at room temperature for 15 min. Next, beads were thoroughly rinsed in the tube with water to remove non-adherent cells and excess dye. The dyed biomass was redissolved with the addition of 4000 μ l of 96% ethanol. Absorbance of the resulting solution was measured at 560 nm in a spectrophotometer (Shimadzu A160 UV-Vis). The measurements taken at $t=0$ are representative of any tintion that might occur before biofilm formation begins on any support surface or by non-specific adhesion to any component of the culture medium.

Control represents 100% of biofilm production and 0% of stimulation of biofilm formation. This correlates with the production of biofilm in the presence of ethanol, the solvent employed in the squamocin solution. The changes in biofilm production may be attributed to squamocin since control also contains ethanol.

A nutritive culture medium such as LB was chosen for these assays to ensure good cell growth, especially at the beginning, because of the large amounts of naphthalene employed.

Naphthalene degradation in the presence of squamocin

In this assay, the concentration of naphthalene was determined in batch cultures containing glass beads as support for biofilm formation. Naphthalene degradation in these systems occurred due to the combined action of planktonic and biofilm cells. The quantification of naphthalene degradation was done as described above.

Squamocin effect on *B. atrophaeus* CN4 cell growth

This study was conducted in a 96 well-microtiter plate to unveil the effects of squamocin 2.5 μ g/ml on *B. atrophaeus* CN4 growth. LB broth in the wells was supplemented with a squamocin solution (5 μ l of a 100 μ g/ml ethanol stock solution, final concentration 2.5 μ g/ml, assay A). Since ethanol was used as squamocin solvent, it was added in equivalent amounts to the control assays so that the ethanol concentration was the same (2.5%) in both cases (assay B). Then, the wells were inoculated with 10% (v/v) of a 14 h cell culture of *B. atrophaeus* CN4 obtained according to section 'preparation of *B. atrophaeus* CN4 inocula'. Abiotic controls were also prepared (inoculation was substituted by an equivalent volume of LB culture medium). Comparison between assays A and B revealed the effects of squamocin on bacterial growth. Final volume in the 96 well-microtiter plate was set at 200 μ l. Then OD_{600nm} was measured every hour in a spectrophotometer (Biotek-Power Wave XS2 with GEN5 data analysis software) during a 24 h (28 °C) incubation period. Assays were conducted in octuplicate.

Biosurfactant/bioemulsifier production

Bioavailability of poorly water soluble compounds such as naphthalene can be increased by the presence of compounds that reduce surface tension or stabilize emulsions⁸. Some authors have reported that some strains of *B. atrophaeus* can produce biosurfactants⁵.

The ability of the strain to form compounds capable of reducing surface tension was analyzed by the drop collapse method. Five μ l of mineral oil were placed in each well of the lid of a 96-well-microplate. The surfaces thus created were allowed to stabilize for 1 h at room temperature. Next, 12 μ l of either a *B. atrophaeus* CN4 cell culture supernatant, a *B. atrophaeus* CN4 cell culture supernatant grown in the presence of 2.5 μ g/ml squamocin (12, 24 or 48 h of incubation at 28 °C), LB medium (with or without squamocin) or an aqueous solution of Tween 80 (positive control) were added in quintuplicate. Once the phases came into contact, the shape of the drop on the oil surface was inspected. Biosurfactant-producing cultures yielded flat drops within 1 min¹².

For emulsification index determination (EI24), four ml of a supernatant of a *B. atrophaeus* CN4 cell culture grown in the presence or absence of squamocin (12, 24 and 48 h of incubation at 28 °C in LB, pH=7.0) and 6 ml of hexane or kerosene were vortexed at high speed (2 min) to form an emulsion. Cell culture supernatants were obtained by centrifugation at 8000 rpm for 15 min at 25 °C and then sterilized with 0.22 μ m Millipore filters. Control assays were prepared with LB medium and LB medium with squamocin to establish their possible emulsifying capacity. The emulsification index (EI 24) was calculated as the height of the emulsion layer, divided by the total height. This result was multiplied by 100 to obtain a measure in percentage. The measurements were made after 24 h at room temperature³.

Statistical analysis

The differences in absorbance mean values ($Abs \pm SD$) were evaluated by variance analysis (ANOVA). The Tukey's test

was used for all pair wise multiple comparisons of groups. In all statistical analyses, values of $p > 0.05$ were considered not significant (Statistix 7.1, 2000).

Results

Bacterial identification

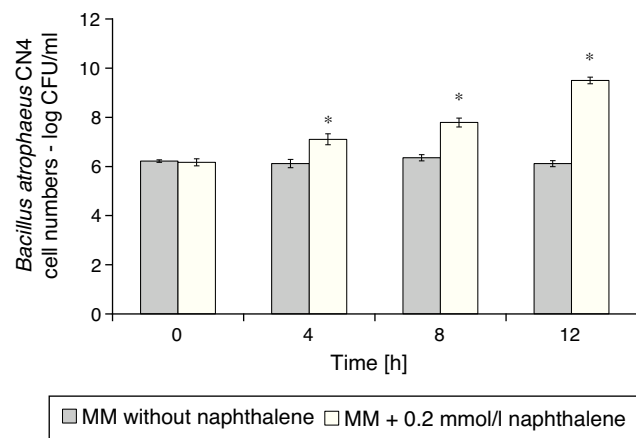
According to the databank of 16S rRNA sequences of the EzTaxon-e server¹⁰ (<http://eztaxon-e.ezbiocloud.net/>) the strain was partially identified as *Bacillus* sp., closely related to *B. atrophaeus* (99.9% identity with *B. atrophaeus* JCM 9070^(T)). Biochemical characterization of *Bacillus* sp. CN4 was performed and it agreed with that reported by Nakamura for *B. atrophaeus*¹³.

Naphthalene removal

B. atrophaeus CN4 was able to grow with naphthalene suspended and/or dissolved in an aqueous medium as the sole carbon and energy source (Fig. 1). No evidence of bacterial growth was observed in the sterile controls. After 12 h of incubation, naphthalene concentration was reduced by 69% in the assays containing cells and by 16% in the abiotic controls (Fig. 2). The decrease in naphthalene concentration in the abiotic controls was attributed to volatilization losses. The chromatograms of the samples from tubes without naphthalene did not contain any peaks with similar retention time to that of naphthalene.

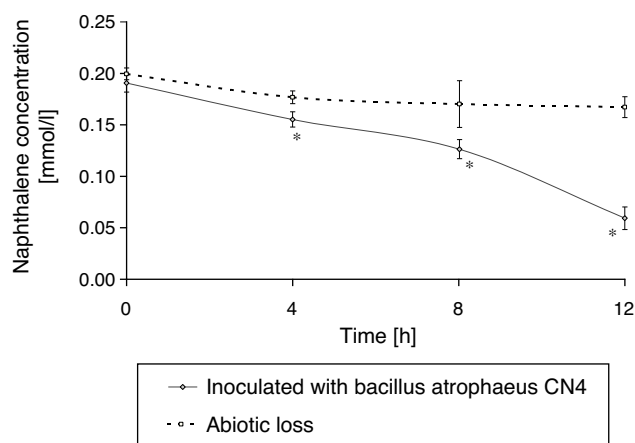
Quantification of biofilm formation in the presence of squamocin

B. atrophaeus CN4 biofilm formation on the surface of glass beads in the presence or absence of 2.5 $\mu\text{g/ml}$ squamocin is presented in Figure 3. *B. atrophaeus* CN4 can form biofilm in the presence or absence of squamocin. After 12 h, the beads exposed to the squamocin medium contained more adsorbed cells ($\text{OD}_{560\text{nm}}$ was 64% higher) than the beads exposed to



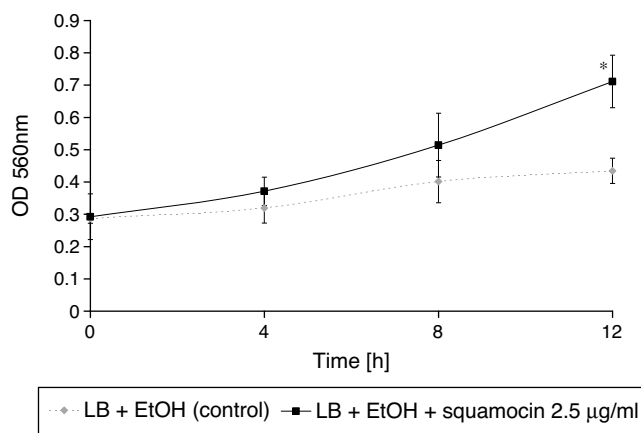
*There is a statistically significant difference among assays, $p < 0.05$

Figure 1 *Bacillus atrophaeus* CN4 cell numbers in MM expressed as the log of colony forming units per ml (log UFC/ml).



*There is a statistically significant difference among assays, $p < 0.05$

Figure 2 Naphthalene removal by *Bacillus atrophaeus* CN4 in MM containing 0.2 mmol/l naphthalene as the only source of carbon and energy (solid line); abiotic or sterile control (dotted line).



*There is a statistically significant difference among assays, $p < 0.05$

Figure 3 *Bacillus atrophaeus* CN4 biofilm formation measured as increase of $\text{OD}_{560\text{nm}}$ after crystal violet staining of glass bead surfaces.

media without squamocin suggesting stimulation of biofilm formation.

Squamocin effect on *B. atrophaeus* CN4 cell growth

The addition of squamocin to the medium had no statistically significant effect on the growth of *B. atrophaeus* CN4 in the planktonic phase (Fig. 4).

Squamocin effects on naphthalene removal

B. atrophaeus CN4 had the ability to remove naphthalene (dissolved and/or suspended in LB broth). A sustained decrease of naphthalene concentration was observed over time. After 12 h of incubation, naphthalene concentration was reduced by 58% in the assays containing squamocin and

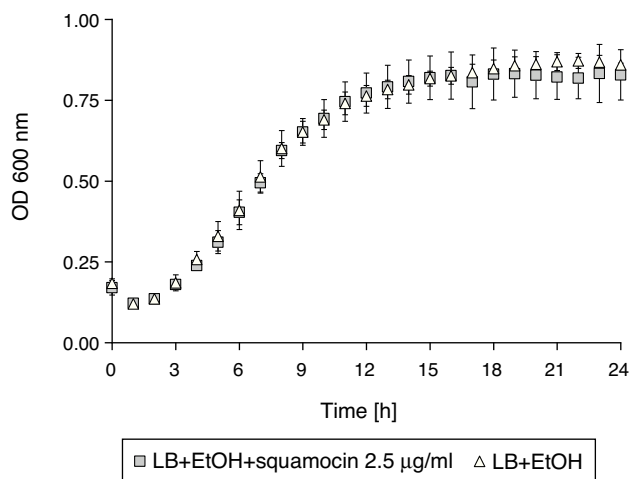
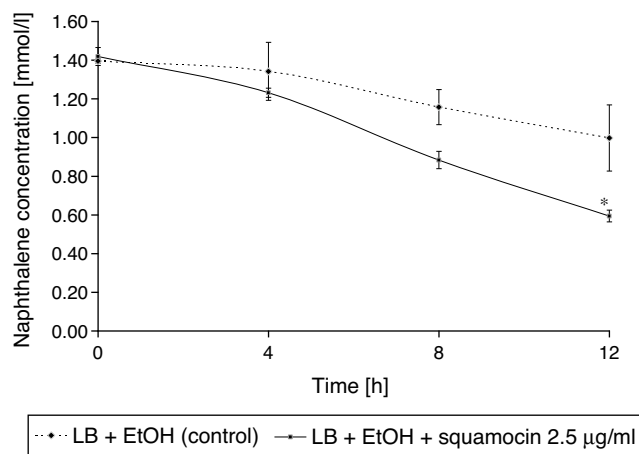


Figure 4 Effect of squamocin on cell growth of *Bacillus atrophaeus* CN4.



*There is a statistically significant difference among assays, $p < 0.05$

Figure 5 Naphthalene degradation produced by the combined action of planktonic and biofilm cells of *Bacillus atrophaeus* CN4. Concentrations were expressed in mmol/l.

by 25% in the assays without squamocin (Fig. 5). Naphthalene concentrations in sterile controls did not statistically differ ($p > 0.05$) after 12 h.

Biosurfactant and bioemulsifier production

Neither drop collapse method nor EI24 determination gave positive results for the production of surface active/emulsifying agents. No stable emulsions could be formed with hexane or kerosene. No flat drops could be observed in the presence of any of the *B. atrophaeus* CN4 cell culture supernatants. The presence of squamocin did not alter any of these behaviors.

Discussion

Squamocin stimulates *B. atrophaeus* CN4 biofilm formation and finally increases its naphthalene degradation

capabilities. Although being gram negative organisms, a similar behavior has been observed for strains *Pseudomonas aeruginosa* PA100² and *Pseudomonas plecoglossicida* J26¹⁵, which suggests that the effect of squamocin does not necessarily depend on the bacterial cell wall structure.

Regarding the effect of plant compounds on biofilm stimulation, Beaugard et al.¹, found that plant polysaccharides can enhance *Bacillus subtilis* biofilm formation; however, in this case the authors suggested that these plant polysaccharides can serve as a carbon source used to produce the extracellular matrix. Nevertheless, the use of squamocin as an additional source of carbon may not be the cause of the increments observed in this study because its concentration is very low and in previous studies it was discovered that it remained without changes associated to cell material¹⁷.

It is general understanding that biofilms are a dormant and not active stage of cells, resulting from their high tolerance against environmental stresses. In order to associate biofilm formation and better naphthalene degrading activity of the cells, Shimada et al.¹⁸ proposed that the increase in naphthalene degradation of a *Pseudomonas* strain was not due to biofilm cells, but to superactivated cells that detached from it. However, it could be inferred that biofilm formation is prior to the release of these cells and thus the squamocin effect would be prior to this phenomenon.

This led us to conclude that the effect of this ACG is circumscribed to the process of biofilm formation. Results suggest that this ACG may also stimulate biofilm formation in a gram-positive bacterium, which contributes to the knowledge of the activity of these compounds.

das Neves et al.⁵ who worked on another strain of *B. atrophaeus*, have reported on its biosurfactant production and culture conditions that might improve it. Hence, we do not discard the possibility that the strain may form biosurfactants in other culture conditions.

The results of biosurfactant and/or bioemulsifier assays and the non-significant effects of 2.5 µg/ml of squamocin on *B. atrophaeus* CN4 cell growth lead us to conclude that the increase in naphthalene degradation is due to the stimulation of biofilm formation.

Ethical disclosure

Protection of human and animal subjects. The authors declare that no experiments were performed on humans or animals for this investigation.

Confidentiality of data. The authors declare that no patient data appears in this article.

Right to privacy and informed consent. The authors declare that no patient data appears in this article.

Conflict of interest

The authors declare that they have no conflicts of interest.

Acknowledgments

This work was supported by grants from the Agencia Nacional de Promoción Científica y Tecnológica (ANPCyT), National

Research Council of Argentina (CONICET) and Consejo de Investigaciones de la Universidad Nacional de Tucumán (CIUNT - Project code PIUNT D552). EAP is recipient of a fellowship from CONICET.

References

1. Beaugerard PB, Chai Y, Vlamakis H, Losick R, Kolter R. *Bacillus subtilis* biofilm induction by plant polysaccharides. *Proc Natl Acad Sci USA*. 2012;110:1621–30.
2. Cartagena E, Álvarez Colom O, Neske A, Valdez JC, Bardón A. Effects of plant lactones on the production of biofilm of *Pseudomonas aeruginosa*. *Chem Pharm Bull*. 2007;55:22–5.
3. Cooper DG, Goldenberg B. Surface-active agents from two *Bacillus* species. *Appl Environ Microbiol*. 1987;53:224–9.
4. Costerton JW, Cheng KJ, Geesey GG, Ladd TI, Nickel JC, Dasgupta M, Marrie TJ. Bacterial biofilms in nature and disease. *Annu Rev Microbiol*. 1987;41:435–64.
5. das Neves LC, de Oliveira KS, Kobayashi MJ, Penna TC, Converti A. Biosurfactant production by cultivation of *Bacillus atrophaeus* ATCC 9372 in semidefined glucose/casein-based media. *Appl Biochem Biotechnol*. 2007, 1-12:539-54.
6. Ellis RJ, Thompson IP, Bailey MJ. Temporal fluctuations in the pseudomonad population associated with sugar beet leaves. *FEMS Microbiol Ecol*. 1999;28:345–56.
7. Fujimoto Y, Eguchi T, Kakinuma K, Ikekawa N, Sahai M, Gupta YK. Squamocin, a new cytotoxic bis-tetrahydrofuran containing acetogenin from *Annona squamosa*. *Chem Pharm Bull (Tokyo)*. 1988;36:4802–6.
8. Johnsen AR, Wick LY, Harms H. Principles of microbial PAH-degradation in soil. *Environ Pollut*. 2005;133:71–84.
9. Juhasz AL, Naidu R. Bioremediation of high molecular weight polycyclic aromatic hydrocarbons: a review of the microbial degradation of benzo [a] pyrene. *Int Biodeter Biodegr*. 2000;45:57–88.
10. Kim OS, Cho YJ, Lee K, Yoon SH, Kim M, Na H, Park SC, Jeon YS, Lee JH, Yi H, Won S, Chun J. Introducing EzTaxon-e: a prokaryotic 16S rRNA gene sequence database with phylotypes that represent uncultured species. *Int J Syst Evol Microbiol*. 2012;62:716–21.
11. Leia L, Khodadoustb AP, Suidana MT, Tabakc HH. Biodegradation of sediment-bound PAHs in field-contaminated sediment. *Water Res*. 2005;39:349–61.
12. Mehdi H, Giti E. Investigation of alkane biodegradation using the microtiter plate method and correlation between biofilm formation, biosurfactant production and crude oil biodegradation. *Int Biodeter Biodegr*. 2008;62:170–8.
13. Nakamura LK. Taxonomic relationship of black-pigmented *Bacillus subtilis* strains and a proposal for *Bacillus atrophaeus* sp. nov. *Int J Syst Bacteriol*. 1989;39:295–300.
14. O'Toole G, Kolter R. Initiation of biofilm formation in *Pseudomonas fluorescens* WCS365 proceeds via multiple, convergent signalling pathways: a genetic analysis. *Mol Microbiol*. 1998;28:449–61.
15. Parellada EA, Ramos AN, Ferrero M, Cartagena E, Bardón A, Valdez JC, Neske A. Squamocin mode of action to stimulate biofilm formation of *Pseudomonas plecoglossicida* J26, a PAHs degrading bacterium. *Int Biodeter Biodegr*. 2011;65:1066–72.
16. Parellada EA, Ramos AN, Ferrero M, Cartagena E, Bardón A, Neske A. Effect of the annonaceous acetogenins, squamocin and laherradurin, on the degradation of naphthalene mediated by *Pseudomonas plecoglossicida* J26. *Int Biodeter Biodegr*. 2012;72:82–7.
17. Parellada EA, Cartagena E, Bardón A, Neske A. Laherradurin, a natural stressor, stimulates QS mechanism involved in biofilm formation of a PAHs degrading bacterium. *Int Biodeter Biodegr*. 2013;85:78–84.
18. Shimada K, Itoh Y, Washio K, Morikawa M. Efficacy of forming biofilms by naphthalene degrading *Pseudomonas stutzeri* T102 toward bioremediation technology and its molecular mechanisms. *Chemosphere*. 2012;3:226–33.
19. Tolosa D, Ruiz Hidalgo J, Sal P, Popich S, Bardón A, Neske A. Insecticidal effects of the annonaceous acetogenin squamocin and the acetogenin fraction of seeds of *Rollinia occidentalis* on soybean and corn pests. *J Agric Chem Environ*. 2014;3:156–60.
20. Wanga Y, Riess R, Nemati M, Hill G, Headley J. Scale-up impacts on mass transfer and bioremediation of suspended naphthalene particles in bead mill bioreactors. *Bioresour Technol*. 2008;99:8143–50.
21. Weisburg WG, Barns SM, Pelletier DA, Lane DJ. 16S ribosomal DNA amplification for phylogenetic study. *J Bacteriol*. 1991;173:697–703.
22. Zhang X, Li B, Wang Y, Guo Q, Lu X, Li S, Ma P. Lipopeptides, a novel protein, and volatile compounds contribute to the antifungal activity of the biocontrol agent *Bacillus atrophaeus* CAB-1. *Appl Microbiol Biotechnol*. 2013;97:9525–34.