

Special Issue “Materiais 2015”

Mechanical characterization of mortar beams

F.A.C. Oliveira^{a, *}, S.V.B. Lopes^b, J.C. Fernandes^b

^aLNEG - Laboratório Nacional de Energia e Geologia I.P., Laboratório de Energia, Estrada do Paço do Lumiar 22, 1649-038 Lisboa, Portugal

^bIDMEC, Instituto Superior Técnico, Universidade de Lisboa, Av. Rovisco Pais, 1049-001 Lisboa, Portugal

Abstract

The mechanical characterization of mortars is problematic due to their sensitivity to stress concentration defects, namely pores and flaws. In this paper, data on three-point bending, Young’s modulus and fracture toughness of mortar beams are presented and discussed. Here, Weibull statistics is applied to analyse flexural strength of the developed mortar. Based on data obtained according to the EN196-1 standard and corrected values taking into account the actual position where failure origin took place, Weibull modulus was found to decrease from 28 to 22, respectively. In addition, fracture toughness was determined using Griffith approach based on critical crack sizes measured by fractography in fracture surfaces. A value of $0.37 \pm 0.04 \text{ MPa m}^{1/2}$ was obtained, which is typical of very fragile brittle materials.

© 2017 Portuguese Society of Materials (SPM). Published by Elsevier España, S.L.U. All rights reserved.

Keywords: Mortar; fracture toughness; Young’s modulus; flexural strength; Weibull modulus.

1. Introduction

Nowadays, mortars are widely used for both new construction and repair. Strengths of mortars change based on the ratios of water/cement and sand/cement which are used. Being a very brittle material, it is crucial to establish an approach that can be incorporated into the design of reliable components. A common technique for assessing strength of brittle materials is the bending (flexure) test, as it involves simple sample shapes. The loading configuration is either three- or four-point bending. The bend strength is determined from the maximum applied tensile stress, assuming that the material fails in tension. Typically brittle materials contain flaws varying in size and type, which causes strength to vary from sample to sample. This variability in strength is usually expressed in terms of a failure probability. Since the form of the strength distribution is not

known a priori, an empirical distribution, first suggested by Weibull [1] is often used. Once the strength of a given material is fitted to this distribution, the failure probability can be predicted and, in case of being too high, it will clearly impact safety, so either the design needs to be changed or the material improved. The Weibull approach assumes a simple power-law stress function for the survival of parts, which is integrated over the sample volume. As such, the three-parameter Weibull distribution for a body failing under a tensile stress σ can be written as:

$$F = 1 - \exp \left[- \int_V \left(\frac{\sigma - \sigma_{\min}}{\sigma_0} \right)^m dV \right] \quad (1)$$

where F is the failure probability, m the Weibull modulus, σ_0 the characteristic strength and σ_{\min} the minimum strength. The Weibull modulus describes the width of the strength distribution; the higher the value of m , the lower is the strength variability.

The purpose of this study is to help improve the knowledge of the mechanical properties of a mortar

* Corresponding author.

E-mail address: fernando.oliveira@lneg.pt (F.A.C. Oliveira)

based on Portland cement by studying its three-point bending strength behaviour, as well as its elastic and fracture toughness properties. Some examples where flexural strength data are of crucial importance in construction include road pavements and airstrips. This study has some significance because flexural strength analysis using Weibull statistics applied to mortars from tests conducted under standard conditions, as described in this paper, is sparse.

2. Experimental

To prepare each group of 3 samples (Fig. 1), according to the EN196-1 standard [2], from a total of 24 samples (40x40x160 mm), 1350 g of sand, 450 g of cement and 225 g of deionized water were used. The sand had a maximum particle size of 2.36 mm and the Portland cement was CEM I 42.5R.

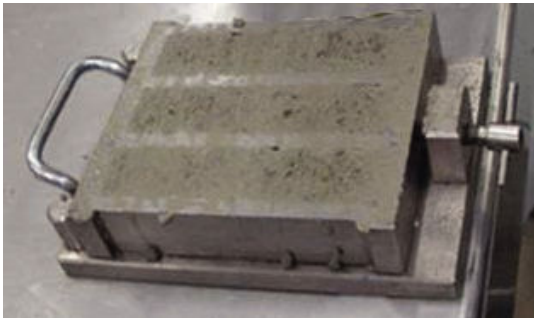


Fig. 1. Mould set-up.

Flexural strength measurements were carried out in a Ibertest testing machine (Madrid, Spain), model Autotest 300, with a maximum capacity in flexure of 15 kN, located at SECIL, after 28 days of curing time, in three-point bending (Fig. 2), according to the above mentioned standard [2]:

$$\sigma_r = \frac{1.5FL}{bh^2} \quad (2)$$

where σ_r is the flexural strength (MPa), F the maximum load (N), b the width (mm), h the height (mm) and L the outer span (100 mm).

All tests were performed at a loading rate of 50 ± 10 N/s. The maximum stress, in this type of loading geometry, is present only at the centre of the beam. After testing, however, it was noted that some samples did not break at maximum load (i.e., $L/2$). Hence, the σ_r values were corrected by measuring the actual position where fracture was initiated and so the true strengths are lower.

Both set of data obtained according to the standard (σ_r) and after correction (σ_r^*) were treated using the

two-parameter Weibull statistics [1], which is assumed in many cases, where $\sigma_{\min}=0$.



Fig. 2. Testing set-up for three-point bending.

The most widely used method to estimate the two parameters from a set of experimentally measured fracture stresses is by using linear regression, involving the ranking of the strength data in an ascending order and the assignment of a probability of failure to each sample. If that is the case, to analyse strength data, Eq. (1) can be simplified as follows:

$$y = \ln \ln \frac{1}{P_s} = m \ln \sigma - m \ln \sigma_0 \quad (3)$$

which represents a linear relationship between y and $\ln \sigma$, with slope m . In such a procedure, a failure probability is needed for each test sample. Thus, the experimental survival probability (P_s) is usually estimated as [3]:

$$P_s = 1 - \frac{(i - 0.5)}{n} \quad (4)$$

where i is the rank of σ -value when all flexural strength results (of the same group of samples) are positioned in increasing order (from weakest to strongest), and n the total number of results. This estimator has been shown to give the least biased estimation of m when $n > 20$ [3]. In this case, the so-called Weibull modulus (m) is a measure of scatter and is roughly inversely related to the coefficient of variation, C_v :

$$m \approx \frac{1.2}{C_v} \quad \text{with} \quad C_v = \frac{s}{\bar{\sigma}} \quad (5)$$

where $\bar{\sigma}$ is the mean strength and s the standard deviation.

The dynamic Young's modulus was measured at room temperature by the impulse of excitation method, according to ASTM C1259-96 [4], using an acoustic device developed by IMCE nv – Integrated Material Control Engineering (Diepenbeek, Belgium) located at LNEG. The Young's modulus is determined using the resonant frequency in the flexural mode of vibration according to the following equation:

$$E = 0.9465 \left(\frac{m f_f^2}{b} \right) \left(\frac{L^3}{t^3} \right) T_1 \quad (6)$$

where E is the Young's modulus (Pa), m the mass of the bar (g), b the width of the bar (mm), L the length of the bar (mm), t its thickness (mm), f_f the fundamental resonant frequency of the bar in flexure (Hz), and T_1 a correction factor for fundamental flexural mode of vibration which is calculated as follows:

$$T_1 = 1 + 6.585 \left(1 + 0.0752\nu + 0.8109\nu^2 \right) \left(\frac{t}{L} \right)^2 - 0.868 \left(\frac{t}{L} \right)^4 - \left[\frac{8.340 \left(1 + 0.2023\nu + 2.173\nu^2 \right) \left(\frac{t}{L} \right)^4}{1.000 + 6.338 \left(1 + 0.1408\nu + 1.536\nu^2 \right) \left(\frac{t}{L} \right)^2} \right] \quad (7)$$

with ν being the Poisson's ratio. Assuming that the material is isotropic, $\nu=0.30$. The f_f values were determined by placing the samples on supports located at the fundamental nodal points (0.224 L from each sample end). For each sample, a minimum of three measurements of f_f were performed.

Fracture toughness was determined, based on critical crack sizes measured by fractography, in fracture surfaces of samples according to the ASTM C 1322-05b standard [5] using Griffith approach:

$$K_{Ic} = Y \sigma_r \sqrt{a} \quad (8)$$

where Y is a dimensionless value that depends on the crack shape and a is the crack depth.

3. Results and Discussion

Flexural strength data prior and after correction are listed in Table 1.

A typical broken sample is shown in Fig. 3.

Based on Eq. (5), values of m were estimated as 28 (when strength values were determined according to EN196-1 Standard) and 22 (for the set of corrected values).

Table 1. Flexural strength data.

i	σ_f (MPa)	σ_f^* (MPa)
1	7.10	7.10
2	7.80	7.10
3	7.80	7.30
4	7.90	7.60
5	7.90	7.70
6	8.00	7.70
7	8.10	7.80
8	8.10	7.80
9	8.10	7.90
10	8.20	7.90
11	8.20	7.90
12	8.20	7.90
13	8.30	7.90
14	8.30	8.00
15	8.30	8.00
16	8.30	8.10
17	8.30	8.10
18	8.30	8.10
19	8.50	8.30
20	8.50	8.30
21	8.50	8.50
22	8.60	8.60
23	8.60	8.60
24	8.80	8.80
\bar{x}	8.20	7.96
σ	0.35	0.43



Fig. 3. Typical fracture surfaces observed.

These values of m are in excellent agreement with those predicted by Eq. (3). Indeed, a Weibull plot (Fig. 4), showing the two sets of flexural data obtained according to the EN196-1 standard and corrected values taking into account the actual position where failure origin took place, can be fitted applying a linear regression, which gives an estimate of Weibull modulus ranging from 28 to 22, respectively. In accordance to Eq. (5), since s increases due to the fact that not all the samples did

break at maximum stress, then m decreases.

For metals and alloys, m is ≈ 100 . For traditional ceramics (e.g., bricks, pottery, glasses), m is lower than 3. Engineering ceramics, in which the process is better controlled (so that the number of flaws is expected to be lower), have m values in the range of 5-20. Hence, the estimated m values are very high when compared to those of typical ceramic materials, suggesting that the mortar under study has a narrow flaw size distribution.

From the intercept ($= -m \ln \sigma_0$), one obtains a specific characteristic strength $\sigma_0^* = 8.15$ MPa, which corresponds to the value of σ_0^* that causes the failure of $1-1/e = 0.632$, i.e., 63.2% of samples.

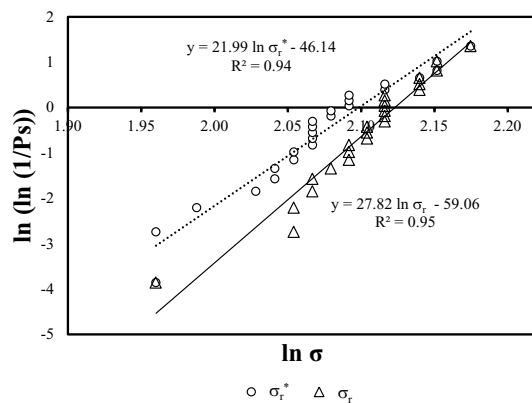


Fig. 4. Weibull plots of flexural strength.

One of the basic parameters in the resistance of the building materials is the Young's modulus, which indicates the deformation capability of a given material in its linear elastic regime depending on the strain to which is subjected. The dynamic Young's modulus of the mortar under investigation was determined to be 34.1 ± 0.1 GPa. This value is higher than those found in the literature for air lime-Portland cement mortars (9-13 GPa, depending on their composition) measured with the same technique [5].

Elastic modulus derived from compression stress-strain curves for cement mortars with the same water/cement ratio and sand/cement ratio of 2.28 (3 in this study) were found to range between 24.0 and 37.6 GPa [6], suggesting that the measured E values lie within the expected range.

Judging from the calculated standard deviation (0.1 GPa), it may be concluded that the mortar under investigation is quite homogenous.

For the uniaxial stress geometry considered, fracture occurs under pure mode I. Thus, the failure criterion can be described in accordance with Eq. (8).

Based on the observed configurations of the initial cracks in sample, a compliance value of $Y = 1.59$ was

assumed in accordance with the ASTM C1322-05b standard [7].

Taking into account the crack depth (a), with values (0.7-1.1 mm) measured by fractography analysis, the mean K_{Ic} value was determined to be 0.37 ± 0.04 MPa $m^{1/2}$. Fig. 5 presents a typical example of a fracture surface showing that the critical defect size is around 1 mm (dashed semi-ellipse indicates the surface crack position).

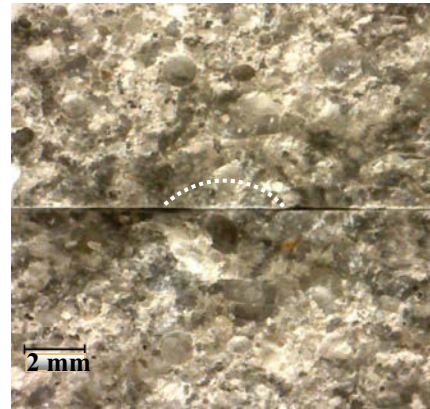


Fig. 5. Typical fracture surface showing a critical defect origin.

The fracture toughness values obtained are similar to those measured for another mortar (0.30 ± 0.08 MPa $m^{1/2}$) using the single-edge notch beam method [8].

To the authors' knowledge, only a few works related to K_{Ic} measurements applied to mortars can be found in the literature using both a notched beam and a double cantilever beam method [9,10]. Similar K_{Ic} values to those obtained in this study were reported. This is not surprising since mortars are not usually expected to be used under uniaxial tensile mode. Such low K_{Ic} values are typical of silicate glasses (0.6-0.8 MPa $m^{1/2}$).

4. Conclusions

From this study, the following conclusions could be drawn:

- The mean corrected flexural strength is lower than that determined by the EN196-1 standard;
- The scatter of the flexural results is higher for the corrected data set and consequently the Weibull modulus (22) is lower than that obtained for the set of data obtained according to the above mentioned standard (28);
- Judging from Weibull modulus and Young's modulus data scatter, it can be concluded that the

developed mortar is quite homogenous;

- The mean fracture toughness of the mortar is $0.37 \pm 0.04 \text{ MPa m}^{1/2}$, which is typical of very brittle materials, such as silicate glasses.

Acknowledgements

We would like to express our gratitude to SECIL-Outão (Setúbal, Portugal) for supplying the raw materials as well as the technical support provided both in the preparation and flexural testing of the mortar beams, in particular to Eng. Vítor Vermelhudo and Eng. Ângela Nunes. This work was supported by FCT, through IDMEC, under LAETA, project UID/EMS/50022/2013.

References

- [1] W. Weibull, *J. Appl. Mech.* 18 (1951) 293.
- [2] Standard EN 196: Methods of testing cement - Part 1: Determination of strength, 2010.
- [3] A.D. Papargyris, *J. Eur. Ceram. Soc.* 18 (1998) 451.
- [4] ASTM C1259-96: Standard test method for dynamic Young's modulus, shear modulus, and Poisson's ratio by impulse excitation of vibration, 1996.
- [5] J.R. Rosell, I.R. Cantalapiedra, *Mater. Constr.* 61 (2011), 39.
- [6] S. Harsh, Z. Shen, D. Darwin, *ACI Mater. J.* 87 (1990) 508.
- [7] ASTM C1322-05b: Standard practice for fractography and characterisation of fracture origins in advanced ceramics, 2006.
- [8] A.S. Marques, P.M. Amaral, L.G. Rosa, J.C. Fernandes, *Mater. Sci. Forum* 636-637 (2010) 1342.
- [9] J.H. Brown, C.D. Pomeroy, *Cem. Concr. Res.* 3 (1973) 475.
- [10] Y.S. Jenq, S.P. Shah, *Eng. Fract. Mech.* 21 (1985) 1055.