



Biotechnology and Industrial Microbiology

Cultivation of *Pichia pastoris* carrying the scFv anti LDL (–) antibody fragment. Effect of preculture carbon source



Cesar Andres Diaz Arias^a, Daniela de Araujo Viana Marques^b,
Luciana Pellegrini Malpiedi^a, Andrea Queiroz Maranhão^c,
Dulcinea Abdalla Saes Parra^d, Attilio Converti^{e,*}, Adalberto Pessoa Junior^a

^a Universidade de São Paulo, Departamento Bioquímico – Tecnologia Farmacêutica, São Paulo, SP, Brazil

^b Universidade Rural Federal de Pernambuco, Departamento de Morfologia e Fisiologia Animal, Recife, PE, Brazil

^c Universidade Nacional de Brasília, Departamento de Biologia Celular, Laboratório de Imunologia Molecular, Brasília, DF, Brazil

^d Universidade de São Paulo, Departamento de Análises Clínicas e Toxicologia, São Paulo, SP, Brazil

^e University of Genoa, Department of Civil, Chemical and Environmental Engineering, Genoa, Italy

ARTICLE INFO

Article history:

Received 11 March 2016

Accepted 28 November 2016

Available online 9 February 2017

Associate Editor: Gisele Monteiro de Souza

Keywords:

Pichia pastoris

scFv antibody fragment

Cryopreservation

Expression

Carbon source

ABSTRACT

Antibodies and antibody fragments are nowadays among the most important biotechnological products, and *Pichia pastoris* is one of the most important vectors to produce them as well as other recombinant proteins. The conditions to effectively cultivate a *P. pastoris* strain previously genetically modified to produce the single-chain variable fragment anti low density lipoprotein (–) under the control of the alcohol oxidase promoter have been investigated in this study. In particular, it was evaluated if, and eventually how, the carbon source (glucose or glycerol) used in the preculture preceding cryopreservation in 20% glycerol influences both cell and antibody fragment productions either in flasks or in bioreactor. Although in flasks the volumetric productivity of the antibody fragment secreted by cells precultured, cryopreserved and reactivated in glycerol was 42.9% higher compared with cells precultured in glucose, the use of glycerol in bioreactor led to a remarkable shortening of the lag phase, thereby increasing it by no less than thrice compared to flasks. These results are quite promising in comparison with those reported in the literature for possible future industrial applications of this cultivation, taking into account that the overall process time was reduced by around 8 h.

© 2017 Sociedade Brasileira de Microbiologia. Published by Elsevier Editora Ltda. This is an open access article under the CC BY-NC-ND license (<http://creativecommons.org/licenses/by-nc-nd/4.0/>).

* Corresponding author.

E-mail: converti@unige.it (A. Converti).

<http://dx.doi.org/10.1016/j.bjm.2016.11.009>

1517-8382/© 2017 Sociedade Brasileira de Microbiologia. Published by Elsevier Editora Ltda. This is an open access article under the CC BY-NC-ND license (<http://creativecommons.org/licenses/by-nc-nd/4.0/>).

Introduction

Monoclonal antibodies and antibody fragments are regarded as biopharmaceuticals with huge potential to boost novel treatments of cancer, inflammatory and infectious diseases.^{1,2} In 2010, about 7% of the global market of pharmaceuticals (US\$ 597 billion) was constituted by monoclonal antibodies and 10% by recombinant proteins.^{3–5} Antibodies have emerged as successful targeted therapeutics owing to the specificity of their antigen binding fragment and potent immune effector functions via the crystallizable fragment.^{6,7}

Essentially, the single-chain variable fragment (scFv), where V_H and V_L domains are connected via a flexible polypeptide, retains the specificity of the parent antibody with improved pharmacokinetics for tissue penetration and is stable for use in immunodiagnostic kits.⁸ Recombinant antibody (rAb) fragments have been expressed in a wide variety of microorganisms including *Escherichia coli*,⁹ *Bacillus subtilis*, *Saccharomyces cerevisiae*¹⁰ and *Pichia pastoris*.²

P. pastoris has become a popular host for industrial protein production because of its ability to produce foreign proteins at high levels.¹¹ Alcohol oxidase 1 promoter (AOX1) is one of the most widely utilized among all the available promoters for *P. pastoris*.^{12,13} It is tightly repressed during yeast growth on glucose or ethanol, but effectively induced by methanol,¹⁴ which, however, is toxic at high levels.¹⁵ Thus, the use of glycerol as a cosubstrate could be an interesting, alternative strategy,^{13,16} provided that it does not repress AOX1 promoter at relatively low level.¹⁴ Based on this information, a typical

rAb production by *P. pastoris* consists of three distinct phases: (a) glycerol batch phase to stimulate growth, (b) glycerol fed-batch phase for AOX1 derepression, and (c) methanol induction phase to express the recombinant protein.^{17–19} In the last phase methanol is typically pulsed repeatedly after complete depletion of substrate.²⁰

For therapeutic purposes, large doses of antibodies are required, which in some cases exceed one gram per patient per year. Thus, there is a need to develop new processes to produce these molecules efficiently and cost effectively.²¹ An optimal expression system depends on the type, purity and quantity of the rAb fragment to be expressed. However, to make the production of monoclonal antibodies by yeasts feasible, there is still the need to shorten the process time to increase volumetric productivity²²; in addition, the conditions reported in the literature for preadaptation and cryopreservation of *P. pastoris* cells are quite variable, which makes the setup of a standard production protocol almost impossible.

So, we randomly revised the most significant scientific reports on these issues since 1998 from different databases,^{12,17,18,23–40} with the aim to know (a) how the cryopreservation should be made, (b) what is the best carbon source for preadaptation before cryopreservation, and (c) what is the best carbon source for cultivation.

The main information arising from these studies, which is summarized in Table 1 in terms of cryopreservation conditions, carbon source used in cryopreservation and culture and type of expressed protein, shows that in 5% of selected papers the yeast was cryopreserved at -20°C , in 24% at $-70/80^\circ\text{C}$, in 10% in liquid nitrogen (about -200°C), while in 61% no

Table 1 – Survey of the main conditions of cell cryopreservation and culture for heterologous protein expression by recombinant *Pichia pastoris*.

Cryopreservation conditions	Cryoprotectant	Culture carbon source	Expressed protein	Reference
Liquid nitrogen ($\sim -200^\circ\text{C}$)	Glycerol	Glycerol (50%, w/v)	scFv antibody	Cunha et al. ²⁵
-80°C	Glycerol	Glycerol	6-Fructosyl transferase	Hochstrasser et al. ²⁸
N/I	N/I	Glycerol	Glycerol 3-phosphate dehydrogenase	Peres et al. ³⁴
N/I	N/I	Glycerol (1%)	Anti CTLA4 single chain variable fragment	Cai et al. ²⁴
-80°C	Glycerol (24%)	Glycerol	Trypsinogen	Paulová et al. ³³
-70°C	Glycerol 20%	Glycerol	scFv antibody	Zepeda et al. ¹⁸
-70°C	Glycerol	Glucose/glycerol (20 g/L)	Iduronate 2-sulfate sulfatase	Poutou et al. ³⁶
Frozen culture	Glycerol	Glycerol	Ovine interferon	Sinha et al. ³⁷
N/I	N/I	Glycerol	Cancer-testis antigen SSX2	Huang et al. ²⁹
N/I	N/I	Glucose	scFv antibody	Miller et al. ³²
-80°C	Glycerol	Glycerol (1%, v/v)	scFv antibody	Damasceno et al. ²⁶
Frozen cell stock	N/I	Dextrose	scFv antibody	Yamawaki et al. ³⁹
-80°C	Glycerol	Glycerol	Single chain antibody	Khatri and Hoffmann ³⁰
N/I	N/I	Glycerol	scFv antibody	Khatri and Hoffmann ³¹
N/I	N/I	Glycerol	Glycerol kinase	Aizemberg et al. ²³
Liquid nitrogen ($\sim -200^\circ\text{C}$)	Glycerol (15%)	Glycerol	Heavy chain C-terminal fragment of botulinum neurotoxin serotype E	Sinha et al. ³⁸
Frozen cell stock	N/I	Glycerol (40 g/L)	hg-CSF	Bahrami et al. ¹⁷
N/I	N/I	Glycerol	Sea raven antifreeze	d'Anjou and Daugulis ²⁷
N/I	N/I	Glycerol	Green fluorescent protein	Yang et al. ⁴⁰
N/I	N/I	Glycerol	rLrf To	Iglesias-Figueroa et al. ¹²
N/I	N/I	Glycerol	INVA _{AOX1} and INVB _{AOX}	Pérez de los Santos et al. ³⁵

cryopreservation temperature was indicated. Glycerol was preferred in 43% of cases as carbon source for cryopreservation, whereas no carbon source was specified in the remaining articles. Finally, the preferred carbon source for final culture was glycerol in 86% of cases and glucose in the remaining ones, although the latter choice appears to be contradictory given the known action of glucose as a repressor of heterologous protein expression under the AOX promoter control. Finally, two-thirds of studies where cells were stored at -80°C followed the protocol of the Invitrogen *Pichia* expression kit for long periods of time.

Based on the above literature background, we selected -80°C as the most common cryopreservation temperature and glycerol as both cryoprotectant and culture carbon source, while it is not clear from the literature which preculture carbon source (glycerol or glucose) should be used. The advance of this work compared to previous reports is to provide clear guidelines to perform a typical culture of a recombinant *P. pastoris* strain carrying the scFv anti LDL (ox) antibody fragment with the aim of developing a new kit to detect LDL (–) in blood for atherosclerosis diagnosis.⁴¹ So, to select the best culture conditions, yeast cells were precultured on glucose or glycerol, then cryopreserved in glycerol at -80°C and finally cultured on glycerol either in flasks or bioreactor.

Materials and methods

Microorganism, preadaptation and cryopreservation

The recombinant *P. pastoris* SMD 1168 $\Delta\text{pep4::URA3}$ $\Delta\text{kex::SUC2his4ura3}$, phenotype His– Mut+ an anti-LDL electronegative His-tagged scFv producing yeast⁴² was used in this study. It was maintained in Petri dishes on yeast extract–peptone–dextrose (YPD) solid medium containing (per L) 20 g dextrose, 10 g yeast extract, 20 g casein peptone and 20 g agar at 30°C for 48 h. Two stocks of cells were then prepared to select the best pre-culture conditions. The former was prepared removing a colony from the plate and culturing it in a 500-mL Erlenmeyer containing 200 mL of glucose-based YPD medium at 250 rpm and 30°C for 32 h. To prepare the latter, another colony was grown, under the same conditions, in modified buffered minimal glycerol-complex medium (BMGY) containing (per L) 10 g yeast extract, 20 g casein peptone, 13.4 g yeast nitrogen base with ammonium sulfate but without amino acids, 4×10^{-4} g biotin, 20 g glycerol and 20 g casamino acids in 100 mM potassium phosphate buffer (pH 6.0). For both stocks, in order to get cells in their exponential growth phase and to ensure almost the same concentration of cells pre-adapted in glucose and glycerol ($53\text{--}78 \times 10^{12}$ CFU), after about 48 h of pre-culture, an aliquot of cell suspension was collected, 1:20 diluted and subjected to optical density (OD) determination at 600 nm.

When OD reached 0.36 (corresponding to the above UFC range), 1.0 mL of either cell suspension was added to Eppendorf's containing 1.0 mL of the cryopreservation medium (BMGY plus 40% glycerol, v/v). Cells (2.0 mL) were finally cryopreserved in ultra-freezer at -80°C . All reagents were of analytical grade.

Viability of *P. pastoris* cells

Samples of *P. pastoris* cells cryopreserved in 20% (v/v) glycerol at -80°C from both stocks were selected randomly. Before and after cryopreservation, cell counts were performed to determine the percentage of viable cells remaining after this step. To this purpose, cells were subject to serial decimal dilutions with 0.1% (m/v) peptone water, distributed in 20 Petri dishes containing agarized BMGY, and grown at 30°C for 28 h.

Inoculum preparation

To prepare the inoculum for flask cultures, 20 mL of above cultures were transferred into 500-mL Erlenmeyer flasks containing 180 mL of BMGY and reactivated for 28 h at 250 rpm and 30°C . For cultures in bioreactor, 200 mL of cell suspensions were inoculated aseptically into a 3-L bench-scale fermentor (Bioflo 110, New Brunswick Scientific Co., Edison, NJ, USA) containing 1.8 L of BMGY under the same conditions. During the growth phase, samples were periodically taken for subsequent analyses of biomass, glycerol and ethanol concentrations.

Expression of the scFv antibody fragment

The scFv antibody fragment was expressed following the procedure described by Kazuma et al.⁴² Briefly, 1.0% (v/v) methanol and 1.0 mM phenyl methanesulfonyl fluoride (PMSF) were added after 28, 52 and 76 h to induce scFv antibody fragment production and to inhibit proteases activity. During this induction phase, samples were periodically withdrawn for subsequent analyses of biomass, glycerol and scFv antibody fragment concentrations. Production of the scFv antibody fragment was performed in triplicate at 20°C either in flasks or in bioreactor. Foaming was controlled by the addition of 0.5 mL of dimethylpolysiloxane when necessary. Stirring and specific air flow rate were set at 600 rpm and 1.8 vvm, respectively.

Analytical methods

Cell concentration was determined by a calibration curve correlating OD and dry weight. After the fermentation broth had been centrifuged at $1253 \times g$ for 20 min at 25°C , cell pellet was washed twice with distilled water, and suspensions were submitted to OD readings at 600 nm through a spectrophotometer, model U1800 (Hitachi, Tokyo, Japan). Glycerol and ethanol concentrations were determined by oxidation with acidic periodate⁴³ and dichromate⁴⁴ methods, respectively. All analyses were performed in triplicate.

scFv antibody fragment purification and quantification

The scFv antibody fragment was purified, as previously reported,⁴² by supernatant filtration, dialysis and Ni-Sepharose Fast Flow resin (GE Healthcare, Uppsala, Sweden) chromatography. The eluted protein was finally dialyzed against phosphate buffered saline (PBS). After the addition of loading buffer, the purified protein was heated for 5 min at 100°C , and 10 μL of this solution were run on a SDS-PAGE (12% polyacrylamide) 1-mm-thick gel in a Bio-Rad Mini-Protein II Electrophoresis System (Bio-Rad, Hercules, CA, USA).

Unstained protein standards (cod. 161-0363, Bio-Rad) with molar mass in the range 10–250 kDa were used as molecular size markers, Coomassie Brilliant Blue G-250 (cod. 1610406, Bio-Rad) as staining solution, and water for rinsing and destaining. An aliquot (25 μ l) of the purified anti-body fragment collected from the broth at the end of cultivation was quantified by the modified bicinchoninic acid (BCA) method (Cat. n. 23225, ThermoScientific, Hudson, NH, USA).⁴²

To confirm scFv fragment expression, dot blots were performed. Five microliter-aliquots of the antibody-containing purified fraction, the positive control (*E. coli* Nha protein labeled with C-terminal 6 \times HisTag)⁴⁵ and the negative control (*P. pastoris* culture without induction) were absorbed onto a polyvinylidene difluoride membrane. To detect the recombinant protein, the membrane was incubated with a blocking solution [5% milk in TBS (10 mM Tris-HCl, pH 7.5, plus 150 mM NaCl) buffer] for 30–45 min at room temperature, washed thrice with TBS buffer for 5 min and then incubated with primary antibodies overnight at 4 °C. In this case anti-His mouse monoclonal antibodies were used at 1:1000 dilution in a 1% milk solution in TBS buffer. After 24 h, the membrane was washed thrice with TBS buffer and incubated for 2 h at 4 °C under the same conditions with secondary polyclonal anti-mouse antibodies obtained in rabbit and coupled to alkaline phosphatase (A4312 Sigma). After final thrice washing of the membrane with TBS buffer, the chromogenic detection of protein was performed by addition of 5-bromo-4-chloro-3-indolyl-phosphate in conjunction with nitro blue tetrazolium (SigmaFast, Sigma).

Definitions of bioprocess parameters

Volumetric productivity of the antibody fragment, P ($\text{mg L}^{-1} \text{h}^{-1}$), was defined as:

$$P = \frac{C_f - C_0}{t_f} \quad (1)$$

where C_f and C_0 (mg/L) are its concentrations at the end and the beginning of the run, respectively, and t_f (h) is the time when the process was stopped.

Maximum specific growth rate, μ_{\max} (h^{-1}), of the microorganism was determined in the exponential growth phase as follows:

$$\ln \frac{X}{X_0} = \mu_{\max} t \quad (2)$$

where X is cell concentration (g/L) in a given point of the curve and X_0 that at the beginning.

The doubling time, t_d (h), was defined as:

$$t_d = \frac{\ln 2}{\mu_{\max}} \quad (3)$$

Results and discussion

To investigate the growth behavior of the recombinant *P. pastoris* strain, two cell stocks with starting cell concentration of the same magnitude order (10^{10} CFU mL^{-1}) were produced

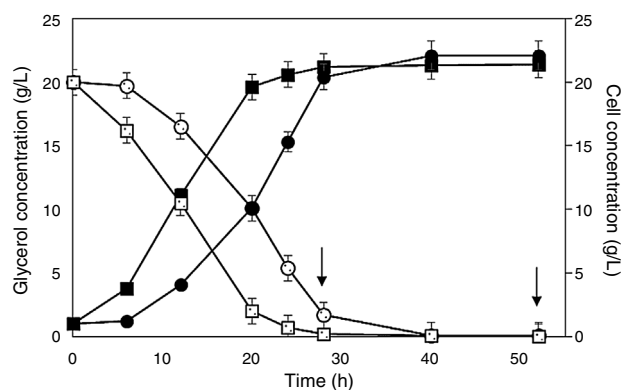


Fig. 1 – Behavior of cell (full symbols) and glycerol (empty symbols) concentrations during *Pichia pastoris* SMD 1168 cultures for the expression of scFv in flasks. Cells preadapted to glycerol (squares) or glucose (circles). Arrows point out additions of methanol as an inducer. A further addition of methanol after 76 is not shown because no variation was detected in both glycerol and cell concentrations.

using glucose or glycerol as carbon sources. Cell counts revealed that this operation implied a very low cell viability loss either before (7.8 and 6.3% in glucose and glycerol precultures, respectively) or after cryopreservation (18.1 and 15.8% in glucose and glycerol precultures, respectively), with no clear carbon source influence. The results of cultures, performed in flasks and bioreactor, are illustrated in Figs. 1 and 2, respectively.

In flasks, the final concentration of cells pre-adapted on glycerol (21.4 g L^{-1}) and glucose (22.1 g L^{-1}) were almost the same, but the latter carbon source required longer time to complete the run, likely because glucose inhibited adenylate cyclase activity, and the consequent low AMPc level prevented the formation of the complex acting on the AOX1

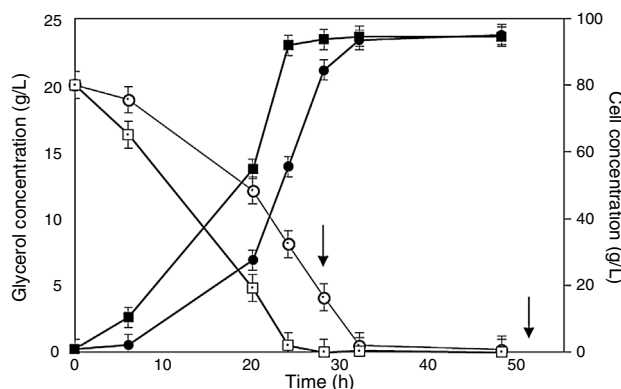


Fig. 2 – Behavior of cell (full symbols) and glycerol (empty symbols) concentrations during *Pichia pastoris* SMD 1168 cultures for the expression of scFv in bioreactor. Cells preadapted to glycerol (squares) or glucose (circles). Arrows point out additions of methanol as an inducer. A further addition of methanol after 76 is not shown because no variation was detected in both glycerol and cell concentrations.

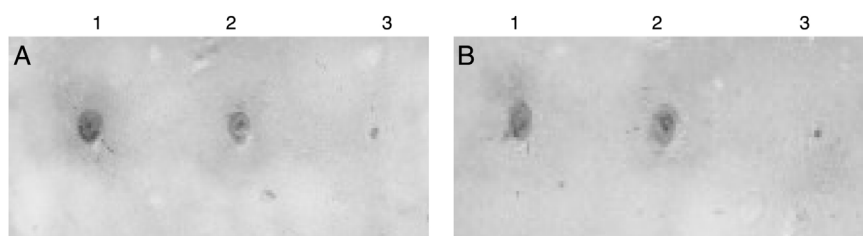


Fig. 3 – Dot blots of samples of broths fermented by recombinant *Pichia pastoris* cells preadapted in glycerol. (A) Bioreactor; (B) flask. 1. Positive control. 2. Broth sample. 3. Negative control.

promoter.³⁶ In addition, even though in glycerol-containing medium the residual glucose level from preculturing was likely insignificant to promote any effect, cell adaptation to the new condition may have lasted a time sufficient to delay significantly the growth. As a consequence, after 6 h of cultivation, cells precultured on glucose were still at the adaptation stage, and the late log phase was reached 8 h later. This behavior was responsible for a remarkable reduction not only of cell productivity, but mainly of antibody fragment productivity (Table 2), which would be a crucial issue in the process scaling up.

As is well known, heterologous proteins expression by *P. pastoris* is subject to induction controlled by the AOX promoter that takes place only in the presence of methanol as the sole carbon source. As soon as the carbon source for growth (glycerol, sorbitol, xylose, ribose, glucose)^{36,46–48} has been exhausted, the step of induction with methanol begins.¹² Some carbon sources, mainly glucose, were reported to inhibit the promoter expression,³⁶ while others such as sorbitol and glycerol were described as not inhibitory.⁴⁹ For this reason, the type of carbon source before the induction is of paramount significance for protein expression.⁵⁰

Fig. 1 shows that glycerol-preadapted cells consumed glycerol almost entirely within 24 h, while those precultured on glucose lasted no less than 32 h. Taking into account that methanol was added the first time after 28 h, the former cell stock exhibited a high antibody concentration at the end of the process, while the latter did not yet reach the late log phase, and there still was a residual glycerol concentration of 1.7 g L⁻¹.

When comparing the results of runs performed in flasks (Table 2), one can see that glycerol-preadapted cells were significantly more effective than those precultured on glucose. Employing the former cell stock, the concentration ($C_f = 14.4 \pm 0.01$ mg L⁻¹) and overall productivity ($P = 0.20 \pm 0.05$ mg L⁻¹ h⁻¹) of the antibody fragment were in

fact 42.9% higher and the maximum specific growth rate ($\mu_{max} = 0.14 \pm 0.01$ h⁻¹) was 12.5% lower, respectively, than employing the latter, and the doubling time (4.81 h) was almost 6% longer. The above μ_{max} value is comparable with that reported in the literature for *P. pastoris* Mut+ expressing lipase from *Rhizopus oryzae* (0.18 h⁻¹).²⁰

Better results were obtained in cultures performed in bioreactor (Fig. 2), in that cell concentration was appreciably higher than in flasks, possibly because the increased dissolved oxygen level in the medium stimulated yeast growth. In bioreactor, cells preadapted to glycerol reached a final concentration almost coincident to that of cells preadapted to glucose, but achieved the late log phase more quickly (24 h) and exhibited a final antibody fragment concentration about 8% higher (32 h) (Fig. 2). When comparing the related kinetic parameters, the antibody fragment volumetric productivity (Table 2) was in bioreactor 4.2- and 5.5-fold those obtained in flasks with cells preadapted to glycerol and glucose, respectively.

As expected, consistently with the results in flasks, glycerol was almost completely consumed (0.5 g L⁻¹) within 24 h by cells preadapted to this carbon source, while those precultured on glucose lasted up to 32 h to do the same (Fig. 2). A possible reason of this behavior is that glycerol can be assimilated quickly forming glyceraldehyde 3-phosphate and dihydroxy acetone phosphate through a route that requires less energy than the steps involved in the aldohexose uptake.³⁶ Another possible reason may be the different regulation of the genic expression in cells of precultures, mainly in the genes involved in glycerol metabolism.

After qualitative confirmation of the antibody fragment activity by dot blot technique (Fig. 3), a bioinformatic study was performed with the aid of ExPASy ProtParam program by using its already-obtained aminoacid sequence as an input (unpublished results). These results taken together indicated that the

Table 2 – Main results of batch cultures of *Pichia pastoris* SMD 1168 performed in either flasks or bioreactor, using cells preadapted on glycerol or glucose and cryopreserved in glycerol 20% (v/v).

System	Carbon source	P (mg _{ScFv} L ⁻¹ h ⁻¹)	Y (mg _{ScFv} g _{DW} ⁻¹)	μ_{max} (h ⁻¹)	t_d (h)	C_f (mg _{ScFv} L ⁻¹)	X (g _{DW} L ⁻¹)
Flasks	Glycerol	0.20 ± 0.05	0.70 ± 0.03	0.14 ± 0.01	4.81 ± 0.03	14.4 ± 0.01	21.4 ± 0.1
Flasks	Glucose	0.14 ± 0.03	0.47 ± 0.03	0.16 ± 0.03	4.51 ± 1.02	10.1 ± 0.01	22.1 ± 0.2
Bioreactor	Glycerol	0.83 ± 0.04	0.64 ± 0.02	0.17 ± 0.01	4.03 ± 0.04	60.2 ± 0.01	94.7 ± 0.2
Bioreactor	Glucose	0.77 ± 0.02	0.59 ± 0.02	0.15 ± 0.01	4.47 ± 0.26	55.8 ± 0.01	95.2 ± 0.2

P, volumetric productivity of the antibody fragment; Y, antibody fragment yield; μ_{max} , maximum specific growth rate; t_d , doubling time; C_f , final antibody fragment concentration; X, final cell concentration.

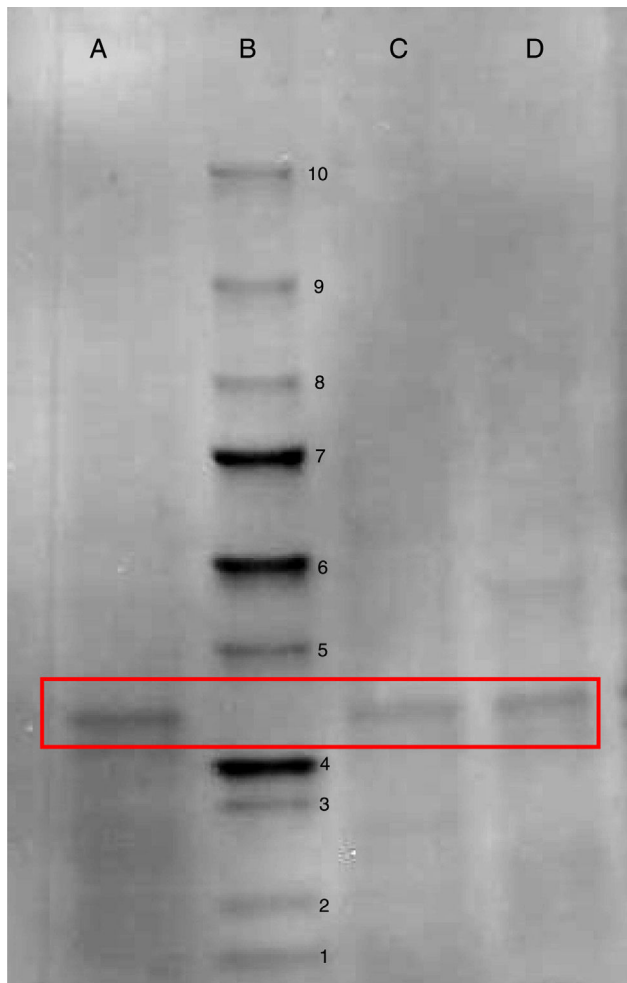


Fig. 4 – SDS-PAGE containing 12% polyacrylamide to confirm the production of the antibody fragment scFv anti LDL-ox. Well A: purified fraction from glycerol-based broth taken at the end of culture in bioreactor. Well B: unstained molar mass marker (Bio-Rad): 1 = 10 kDa; 2 = 15 kDa; 3 = 20 kDa; 4 = 25 kDa; 5 = 37 kDa; 6 = 50 kDa; 7 = 75 kDa; 8 = 100 kDa; 9 = 150 kDa; 10 = 250 kDa. Well C: purified fraction from glucose-based broth taken at the end of culture in flask. Well D: purified fraction from glycerol-based broth taken at the end of culture in flask. Boxes enclose the \approx 28 kDa antibody fragment.

antibody fragment is constituted by 260 aminoacids, molar mass of 27.64 kDa and a theoretical isoelectric point of 8.9. To confirm this molar mass, a SDS-PAGE on a sample of purified scFv allowed us to identify a band of about 28 kDa (Fig. 4), which is in fair agreement with the above value predicted by the aminoacid sequence.

Conclusions

The results of this study demonstrate that recombinant *P. pastoris* cells cryopreserved in glycerol and preadapted in glycerol-containing BMGY medium provided higher yields of biomass and scFv antibody fragment compared to cells

preadapted in glucose. Glycerol was shown to be a better carbon source than glucose to preculture these cells, allowing for high biomass productivity, lower duplication time and greater final concentration and productivity of the antibody fragment. This adaptation shortened the time needed to reach the late log phase, and cells were able to completely consume the carbon source (glycerol) before the induction phase promoted by methanol, hence avoiding any catabolic repression. The results obtained in bioreactor were better than those obtained in flasks and suggest that the use of an appropriate preadaptation protocol to store cells would allow saving up to 8 h (more than 8% of the overall production time), thus promising to remarkably increase the volumetric productivity. As a concluding remark, we propose, based on the results of this study, to maintain cells always on glycerol throughout the whole production sequence, i.e. during the steps of preadaptation, cryopreservation and cultivation.

Conflicts of interest

The authors declare no conflicts of interest.

Acknowledgements

This project was supported by Brazilian FAPESP, CNPq and CAPES. Moreover, Prof. Converte thanks CAPES for the Special Visiting Researcher fellowship within the Program Sciences without Borders (project n. 2609/2013).

REFERENCES

- Liu JKH. The history of monoclonal antibody development – progress, remaining challenges and future innovations. *Ann Med Surg.* 2014;3:113–116.
- Potgieter TI, Cukan M, Drummond JE, et al. Production of monoclonal antibodies by glycoengineered *Pichia pastoris*. *J Biotechnol.* 2009;139:318–325.
- Elvin JG, Couston RG, van der Walle CF. Therapeutic antibodies: market considerations, disease targets and bioprocessing. *Int J Pharm.* 2013;440:83–98.
- Wang M, Jiang S, Wang Y. Recent advances in the production of recombinant subunit vaccines in *Pichia pastoris*. *Bioengineered.* 2016;7:155–165.
- Weinacker D, Rabert C, Zepeda AB, Figueroa CA, Pessoa A, Farías JG. Applications of recombinant *Pichia pastoris* in the healthcare industry. *Braz J Microbiol.* 2013;44:1043–1048.
- Carter PJ. Potent antibody therapeutics by design. *Nat Rev Immunol.* 2006;6:343–357.
- Lobner E, Traxlmayr MW, Obinger C, Hasenhindl C. Engineered IgG1-Fc – one fragment to bind them all. *Immunol Rev.* 2016;270:113–131.
- Gasser B, Mattanovich D. Antibody production with yeasts and filamentous fungi: on the road to large scale. *Biotechnol Lett.* 2007;29:201–212.
- Schwalbach G, Sibler AP, Choulier L, Deryckère F, Weiss E. Production of fluorescent single-chain antibody fragments in *Escherichia coli*. *Protein Expr Purif.* 2000;18:121–132.
- Hackel BJ, Huang D, Bubolz JC, Wang XX, Shusta EV. Production of soluble and active transferrin receptor-targeting single-chain antibody using *Saccharomyces cerevisiae*. *Pharm Res.* 2006;23:790–797.

11. Krainer FW, Darnhofer B, Birner-Gruenberger R, Glieder A. Recombinant production of a peroxidase-protein G fusion protein in *Pichia pastoris*. *J Biotechnol*. 2016;219:24–27.
12. Iglesias-Figueroa B, Valdiviezo-Godina N, Siqueiros-Cendón T, Sinagawa-García S, Arévalo-Gallegos S, Rascón-Cruz Q. High-level expression of recombinant bovine lactoferrin in *Pichia pastoris* with antimicrobial activity. *Int J Mol Sci*. 2016;17:E902.
13. Jungo C, Marison I, von Stockar U. Regulation of alcohol oxidase of a recombinant *Pichia pastoris* Mut⁺ strain in transient continuous cultures. *J Biotechnol*. 2007;130:236–246.
14. Çelik E, Çalık P, Oliver SG. Metabolic flux analysis for recombinant protein production by *Pichia pastoris* using dual carbon sources: effects of methanol feeding rate. *Biotechnol Bioeng*. 2010;105:317–329.
15. Duan H, Umar S, Hu Y, Chen J. Both the AOX1 promoter and the FLD1 promoter work together in a *Pichia pastoris* expression vector. *World J Microbiol Biotechnol*. 2009;25:1779–1783.
16. Zhang P, Zhang W, Zhou X, Bai P, Cregg JM, Zhang Y. Catabolite repression of AOX in *Pichia pastoris* is dependent on hexose transporter PpHxt1 and pexophagy. *Appl Environ Microbiol*. 2010;76:6108–6118.
17. Bahrami A, Shojaosadati SA, Khalilzadeh R, Farahani EV. Two-stage glycerol feeding for enhancement of recombinant hG-CSF production in a fed-batch culture of *Pichia pastoris*. *Biotechnol Lett*. 2008;30:1081–1085.
18. Zepeda AB, Figueroa CA, Abdalla DSP, et al. Biomarkers to evaluate the effects of temperature and methanol on recombinant *Pichia pastoris*. *Braz J Microbiol*. 2014;45:475–483.
19. Zepeda AB, Figueroa CA, Abdalla DSP, et al. HSF-1, HIF-1 and HSP90 expression on recombinant *Pichia pastoris* under fed-batch fermentation. *Braz J Microbiol*. 2014;45:485–490.
20. Looser V, Bruhlmann B, Bumbak F, et al. Cultivation strategies to enhance productivity of *Pichia pastoris*: a review. *Biotechnol Adv*. 2015;33(6 Pt 2):1177–1193.
21. Andersen DC, Reilly DE. Production technologies for monoclonal antibodies and their fragments. *Curr Opin Biotechnol*. 2004;15:456–462.
22. Weisser NE, Hall JC. Applications of single-chain variable fragment antibodies in therapeutics and diagnostics. *Biotechnol Adv*. 2009;27:502–520.
23. Aizemberg R, Terrazas WDM, Ferreira-Dias S, Valentini SR, Gattás EAL. Recombinant glycerol kinase production by *P. pastoris*. *Food Technol Biotechnol*. 2011;49:329–335.
24. Cai H, Chen L, Wan L, et al. High-level expression of a functional humanized anti-CTLA4 single-chain variable fragment antibody in *Pichia pastoris*. *Appl Microbiol Biotechnol*. 2009;82:41–48.
25. Cunha AE, Clemente JJ, Gomes R, et al. Methanol induction optimization for scFv antibody fragment production in *Pichia pastoris*. *Biotechnol Bioeng*. 2004;86:458–467.
26. Damasceno LM, Pla I, Chang HJ, et al. An optimized fermentation process for high-level production of a single-chain Fv antibody fragment in *Pichia pastoris*. *Protein Expr Purif*. 2004;37:18–26.
27. d’Anjou MC, Daugulis AJ. A rational approach to improving productivity in recombinant *Pichia pastoris* fermentation. *Biotechnol Bioeng*. 2001;72:1–11.
28. Hochstrasser U, Lüscher M, De Virgilio C, Boller T, Wiemken A. Expression of a functional barley sucrose-fructan 6-fructosyltransferase in the methylotrophic yeast *Pichia pastoris*. *FEBS Lett*. 1998;440:356–360.
29. Huang C-J, Anderson KA, Damasceno LM, Ritter G, Old LJ, Batt CA. Improved secretion of the cancer-testis antigen Ssx2 in *Pichia pastoris* by deletion of its nuclear localization signal. *Appl Microbiol Biotechnol*. 2010;86:243–253.
30. Khatri NK, Hoffmann F. Impact of methanol concentration on secreted protein production in oxygen-limited cultures of recombinant *Pichia pastoris*. *Biotechnol Bioeng*. 2006;93:871–879.
31. Khatri NK, Hoffmann F. Oxygen-limited control of methanol uptake for improved production of a single-chain antibody fragment with recombinant *Pichia pastoris*. *Appl Microbiol Biotechnol*. 2006;72:492–498.
32. Miller KD, Weaver-Feldhaus J, Gray SA, Siegel RW, Feldhaus MJ. Production, purification, and characterization of human scFv antibodies expressed in *Saccharomyces cerevisiae*, *Pichia pastoris*, and *Escherichia coli*. *Protein Expr Purif*. 2005;42:255–267.
33. Paulová L, Hyka P, Branská B, Melzoch K, Kovar K. Use of a mixture of glucose and methanol as substrates for the production of recombinant trypsinogen in continuous cultures with *Pichia pastoris* Mut⁺. *J Biotechnol*. 2012;157:180–188.
34. Peres MFS, Silva VC, Valentini SR, Gattás EAL. Recombinant expression of glycerol-3-phosphate dehydrogenase using the *Pichia pastoris* system. *J Mol Catal B Enzym*. 2010;65:128–132.
35. Pérez de los Santos AI, Cayetano-Cruz M, Gutiérrez-Antón M, et al. Improvement of catalytical properties of two invertases highly tolerant to sucrose after expression in *Pichia pastoris*. Effect of glycosylation on enzyme properties. *Enzyme Microb Technol*. 2016;83:48–56.
36. Poutou PRA, Quevedo HBE, Córdoba HA, Sáenz H, Barrera ALA. Influencia de la fuente de carbono sobre la expresión de proteínas AOX1-reguladas en *Pichia pastoris*. *Nova*. 2005;3(3):75–87.
37. Sinha J, Plantz BA, Inan M, Meagher MM. Causes of proteolytic degradation of secreted recombinant proteins produced in methylotrophic yeast *Pichia pastoris*: case study with recombinant ovine interferon- γ . *Biotechnol Bioeng*. 2005;89:102–112.
38. Sinha J, Inan M, Fanders S. Cell bank characterization and fermentation optimization for production of recombinant heavy chain C-terminal fragment of botulinum neurotoxin serotype E (rBoNTE(H(c)): antigen E) by *Pichia pastoris*. *J Biotechnol*. 2007;127:462–474.
39. Yamawaki S, Matsumoto T, Ohnishi Y, et al. Production of single-chain variable fragment antibody (scFv) in fed-batch and continuous culture of *Pichia pastoris* by two different methanol feeding methods. *J Biosci Bioeng*. 2007;104:403–407.
40. Yang J, Nie L, Chen B, et al. Hygromycin-resistance vectors for gene expression in *Pichia pastoris*. *Yeast*. 2014;31:115–125.
41. de Jager SCA, Kuiper J. Vaccination strategies in atherosclerosis. *Thromb Haemost*. 2011;106:796–803.
42. Kazuma SM, Cavalcante MF, Telles AE, Maranhão AQ, Abdalla DS. Cloning and expression of an anti-LDL (–) single-chain variable fragment, and its inhibitory effect on experimental atherosclerosis. *MAbs*. 2013;5:763–775.
43. Bok SH, Demain AL. An improved colorimetric assay for polyols. *Anal Biochem*. 1977;81:753–762.
44. Joslyn MA. *Methods in Food Analysis*. 2nd ed. New York: Academic Press; 1970.
45. Mager T, Rimon A, Padan E, Fendler K. Transport mechanism and pH regulation of the Na⁺/H⁺ antiporter NhaA from *Escherichia coli*. *J Biol Chem*. 2011;286:23570–23581.
46. Dietzsch C, Spadiut O, Herwig C. A dynamic method based on the specific substrate uptake rate to set up a feeding strategy for *Pichia pastoris*. *Microb Cell Fact*. 2011;10(1):14.
47. Hellwig S, Emde F, Raven NP, Henke M, van Der Logt P, Fischer R. Analysis of single-chain antibody production in *Pichia pastoris* using on-line methanol control in fed-batch and mixed-feed fermentations. *Biotechnol Bioeng*. 2001;74:344–352.
48. Wang X, Cai M, Shi L, et al. PpNrg1 is a transcriptional repressor for glucose and glycerol repression of AOX1 promoter in methylotrophic yeast *Pichia pastoris*. *Biotechnol Lett*. 2016;38:291–298.

49. Carly F, Niu H, Delvigne F, Fickers. Influence of methanol/sorbitol co-feeding rate on pAOX1 induction in a *Pichia pastoris* Mut+ strain in bioreactor with limited oxygen transfer rate. *J Ind Microbiol Biotechnol.* 2016;43:517–523.
50. Soyaslan EŞ, Çalık P. Enhanced recombinant human erythropoietin production by *Pichia pastoris* in methanol fed-batch/sorbitol batch fermentation through pH optimization. *Biochem Eng J.* 2011;55:59–65.