



Veterinary Microbiology

Isolation and characterization of yeasts from fermented apple bagasse as additives for ruminant feeding



Y. Castillo-Castillo^a, O. Ruiz-Barrera^{b,*}, M.E. Burrola-Barraza^b, Y. Marrero-Rodriguez^c, J. Salinas-Chavira^d, C. Angulo-Montoya^e, A. Corral-Luna^b, C. Arzola-Alvarez^b, M. Itza-Ortiz^a, J. Camarillo^b

^a Universidad Autonoma de Cd. Juarez, Division Multidisciplinaria, Departamento de Medicina Veterinaria, Nuevo Casas Grandes, Mexico

^b Universidad Autonoma de Chihuahua, Facultad de Zootecnia y Ecologia, Chihuahua, Mexico

^c Instituto de Ciencia Animal (ICA), San José de las Lajas, Cuba

^d Universidad Autonoma de Tamaulipas, Facultad de Medicina Veterinaria y Zootecnia, Cd. Victoria, Mexico

^e Universidad Autonoma de Sinaloa, Culiacan, Facultad de Medicina Veterinaria y Zootecnia, Sin, Mexico

ARTICLE INFO

Article history:

Received 22 September 2015

Accepted 6 March 2016

Available online 28 July 2016

Associate Editor: Miliane Moreira Soares de Souza

Keywords:

Apple bagasse

Ruminal

Fermentation

Yeast

ABSTRACT

Solid-state fermentation can be used to produce feeds for ruminants, which can provide an enriched population of yeasts to improve ruminal fermentation. Fermentation of apple bagasse was performed to obtain a yeast-rich product, with the objective of isolating, identifying, and characterizing yeast strains and testing their capability to enhance *in vitro* ruminal fermentation of fibrous feeds. Yeasts were isolated from apple bagasse fermented under *in vitro* conditions, using rumen liquor obtained from cannulated cows and alfalfa as a fibrous substrate. A total of 16 new yeast strains were isolated and identified by biochemical and molecular methods. The strains were designated Levazot, followed by the isolate number. Their fermentative capacity was assessed using an *in vitro* gas production method. Strain Levazot 15 (*Candida norvegensis*) showed the greatest increase in gas production ($p < 0.05$) compared with the yeast-free control and positively affected *in vitro* ruminal fermentation parameters of alfalfa and oat straw. Based on these results, it was concluded that the Levazot 15 yeast strain could be potentially used as an additive for ruminants consuming high-fiber diets. However, further studies of effects of these additives on rumen digestion, metabolism, and productive performance of ruminants are required.

Published by Elsevier Editora Ltda. on behalf of Sociedade Brasileira de Microbiologia.

This is an open access article under the CC BY-NC-ND license (<http://creativecommons.org/licenses/by-nc-nd/4.0/>).

* Corresponding author. Facultad de Zootecnia y Ecologia, Universidad Autonoma de Chihuahua, Chihuahua, Chih. Mexico.

E-mail: oscarruiz80@gmail.com (O. Ruiz-Barrera).

<http://dx.doi.org/10.1016/j.bjm.2016.07.020>

1517-8382/Published by Elsevier Editora Ltda. on behalf of Sociedade Brasileira de Microbiologia. This is an open access article under the CC BY-NC-ND license (<http://creativecommons.org/licenses/by-nc-nd/4.0/>).

Introduction

A search for alternative, low-cost feed sources that can replace higher-cost conventional feeds is one of the main goals of animal nutritionists.^{1,2} The solid-state fermentation (SSF) process involves fermentation of solid substrates in the absence (or near absence) of free water and is frequently used for substrates containing enough moisture to support the development of fermenting microorganisms.³ Because SSF stimulates the growth of microorganisms, this process offers numerous opportunities for processing of agro-industrial residues, such as protein enrichment of sugarcane.⁴ Apple bagasse is a residue produced during extraction of apple juice. As an agricultural byproduct, apple bagasse is rich in soluble carbohydrates and pectins and thus can be utilized, after an SSF process, as a feed for ruminants. The fermentative process enhances the nutritive value of apple bagasse by promoting the growth of microorganisms, which increase its protein content and improve its digestibility.⁵ The use of yeasts such as *Saccharomyces cerevisiae* as feed additives has been shown to improve the health and productivity of ruminants^{6,7} and to offer a natural way to manipulate animal productivity by favorably modifying microbial fermentation and improving dry matter and neutral detergent fiber (NDF) digestibility,⁸ feed consumption,⁹ milk production, and live weight gain.¹⁰ A previous *in vitro* study has demonstrated that the addition of fermented apple bagasse (FAB) to ruminal fermentation of alfalfa increased the viable yeast counts and concentration of lactic acid in the ruminal medium within 24 h.¹¹ Other studies have shown that when certain yeast strains are provided, rumen conditions are improved.^{12,13} Similarly, significant increases were found in the *in vitro* forage degradability when rice bran was treated with *Candida utilis*, and the author attributed this effect to the stimulation of rumen microbes by the yeast.¹⁴ Marrero et al.¹⁵ demonstrated that supplemented yeasts were able to survive for 24 h under the rumen conditions. These results confirm that certain microorganisms, when placed in a new habitat, are able to exploit the resources of the environment in which they are inoculated, as, for example, yeasts utilize the scarce oxygen present in the rumen, thus favoring anaerobic conditions.¹⁶ Based on the assumption that the addition of FAB would improve the ruminal fermentation, specifically due to the yeasts present in FAB, the objective of this study was to isolate, identify, and characterize yeast strains from FAB for their potential use as microbial additives in ruminant production systems.

Materials and methods

Fermented apple bagasse

Apple bagasse was obtained from Confrutta, S.A. (Chihuahua, Mexico) and fermented as described by Castillo-Castillo et al.⁵ Briefly, apple bagasse was ground and mixed with urea, ammonium sulfate, and a mineral salt mixture containing macro- and microelements, which were added to final concentrations of 1.5%, 0.2%, and 0.5%, respectively.¹⁷ Then, 342 g of

the sample was placed into a sterile 500-mL Erlenmeyer flask for SSF. The flasks were plugged with cotton and incubated under static conditions at 32 °C for 48 h.

In vitro ruminal fermentation of apple bagasse

Non-lactating, rumen-cannulated Holstein dairy cows (average body weight: 550 ± 25.5 kg, n = 3) were used as donors of ruminal liquor. The cows were fed twice daily with 4.0 kg of a concentrate (51.0% corn, 23.5% wheat bran, 10% cottonseed meal, 8.49% corn gluten meal, 2.0% sugarcane molasses, 1.5% soybean meal, 1.0% bypass fat, 0.8% CaCO₃, 0.5% urea, 0.5% animal fat, 0.2% NaCl, and 0.5% trace mineral and vitamin premix) and 4 kg of corn silage (on a dry matter basis). The rumen fluid was sampled at 6:00 a.m., before the morning feeding, and transferred to the laboratory in hermetically sealed sterile bottles. The ruminal liquor was filtered through six layers of cheesecloth under complete CO₂ atmosphere to provide anaerobic conditions. Fermentation was performed in 20 serum flasks (250 mL) at 39 °C with mechanical agitation. The filtered rumen fluid was mixed with a buffer solution at a ratio of 1:2 (50:100 mL) and added to a mixed substrate of FAB and alfalfa hay (50:50 ratio), which were previously milled and sieved through a 2-mm sieve before their transfer to the flasks for fermentation. After 24 h, the flasks were withdrawn from the incubator, and their entire contents were collected, homogenized, and filtered through six layers of cheesecloth. The filtrates were used for inoculation of a medium in roll tubes, as described below. The chemical composition of the alfalfa (% of dry basis) was as follows: organic matter (OM), 89.07; ash, 10.93; crude protein (CP), 18.02; NDF, 65.6; acid detergent fiber (ADF), 39.0; and ether extract (EE), 2.02. The chemical composition of the fermented apple bagasse (% of dry basis) was as follows: OM, 89.94; ash 10.05; CP, 35.05; NDF, 48.31; ADF, 37.54; and EE, 5.2.

Culture of microorganisms

Yeasts were cultivated under strict anaerobic conditions according to the method described by Hungate.¹⁸ Roll tubes were inoculated in triplicate with three dilutions (10⁴, 10⁵, and 10⁶) of the filtered contents of the ruminal fermentation flasks, according to Caldwell and Bryant,¹⁹ and incubated at 39 °C for 24 h. The isolation medium included malt extract agar (Difco™, Sparks, MD, USA) supplemented with 0.01 g/L of chloramphenicol. The yeast isolates present in the ruminal ecosystem were obtained from colonies that grew in the roll tubes with the highest dilution, following the method of Marrero et al.²⁰ Cultures with different macroscopic characteristics were inoculated and incubated following the method described by Marrero et al.²¹

Biochemical and microscopic characterization of *Levazot* strains

To ensure that the isolated yeasts do not belong to the genus *Saccharomyces*, the isolates (designated *Levazot*, followed by the isolate number) were grown at 30 °C for 72 h on the following specific medium for non-*Saccharomyces* yeasts: malt agar extract (3.2 g/L), peptone (1.8 g/L), dextrose (10 g/L), K₂HPO₄

(1 g/L), NH_4Cl (0.5 g/L), CuSO_4 (5%, w/v), and bacteriological-grade agar (19 g/L).²¹ *S. cerevisiae* strain L/25-7-13 obtained from the Cuban Institute for Research on Sugarcane Derivatives, National Center of Animal Health, was used as a control. To determine their oxygen requirements, the strains were grown in malt extract broth, on malt extract agar, and in thio-glycollate medium at 30 °C for 48 h. Urea hydrolysis, starch fermentation, and high osmotic pressure tests were performed according to the methods described by Marrero et al.²⁰ To observe the formation of pseudomycelium, mycelium, and ballistospores, the Levazot strains were seeded in Petri dishes with malt extract agar and incubated at 25 °C for 5 days.

Molecular characterization

Genomic DNA was isolated using the PureLink™ Genomic DNA Mini Kit (Invitrogen, Carlsbad, CA, USA), according to the manufacturer's instructions. The 18S rRNA gene was amplified using the oligonucleotides nu-SSU-0817-5' (5'-TTAGCATGGAATAATRRRAATAGGA-3') and nu-SSU-1536-3' (5'-ATTGCAATGCTATCCCGCA-3'), according to Borneman and Hartin.²² Each polymerase chain reaction (PCR) contained 5 µL of 10× High Fidelity PCR buffer, 2 µL of 50 mM MgSO_4 , 2 µL of 10 mM deoxynucleotide triphosphates, 10 pmol each primer NL1 and NL4, 200 ng of DNA, and 1 U of Platinum® Taq DNA Polymerase, High Fidelity (Invitrogen) in a final volume of 25 µL. Amplification was carried out as follows: initial denaturation at 95 °C for 5 min, followed by 35 cycles of 15 s at 94 °C, 25 s at 54 °C, and 20 s at 68 °C, and a final extension at 68 °C for 10 min. The PCR products were purified and sequenced using an ABI PRISM® 3100 Genetic Analyzer (Perkin Elmer). The sequences were submitted to the GenBank database using the BankIT program (National Center for Biotechnology Information, USA) and analyzed using the BLASTn algorithm.²³ Phylogenetic analysis was performed using the PHYLIP²⁴ and ClustalW programs.²⁵ In addition to the yeasts isolated in this study, 18S rRNA gene sequences from 15 closely related yeasts were included in the analysis. The yeasts were *Candida norvegensis* (AF201302.1), *C. albicans* (KC936147.1), *C. tropicalis* (JQ008834.1), *C. xestobii* (AB013517.1), *C. rugopelliculosa* (EF550376.1), *C. carpophila* (AJ508270.1), *C. fermentati* (AY553853.1), *C. dubliniensis* (X99399.1), *C. viswanathii* (EU589205.1), *Issatchenkia orientalis* (EF550360.1), *I. occidentalis* (AB053240.2), *I. scutulata* (EF550381.1), *I. terricola* (EF550371.1), *Pichia membranaefaciens* (X96453.1), and *P. nakasei* (EF550386.1). A phylogenetic tree was generated using Kimura's two-parameter correction model for genetic distances²⁶ and the neighbor-joining method.²⁷

In vitro gas production

The fermentative capacity of the isolated yeasts was assessed using the *in vitro* gas production method of Theodorou et al.²⁸ The isolates were grown in 10 mL of malt extract broth at 30 °C for 24 h on a shaker and then subcultured (1:40 dilution) in the same medium at 30 °C for 24 h. The gas production test was performed in four replications for each yeast strain as follows: 6 mL of a culture (4.5×10^7 cells/mL) was mixed with 24 mL of the fermentation medium, and the mixture was transferred

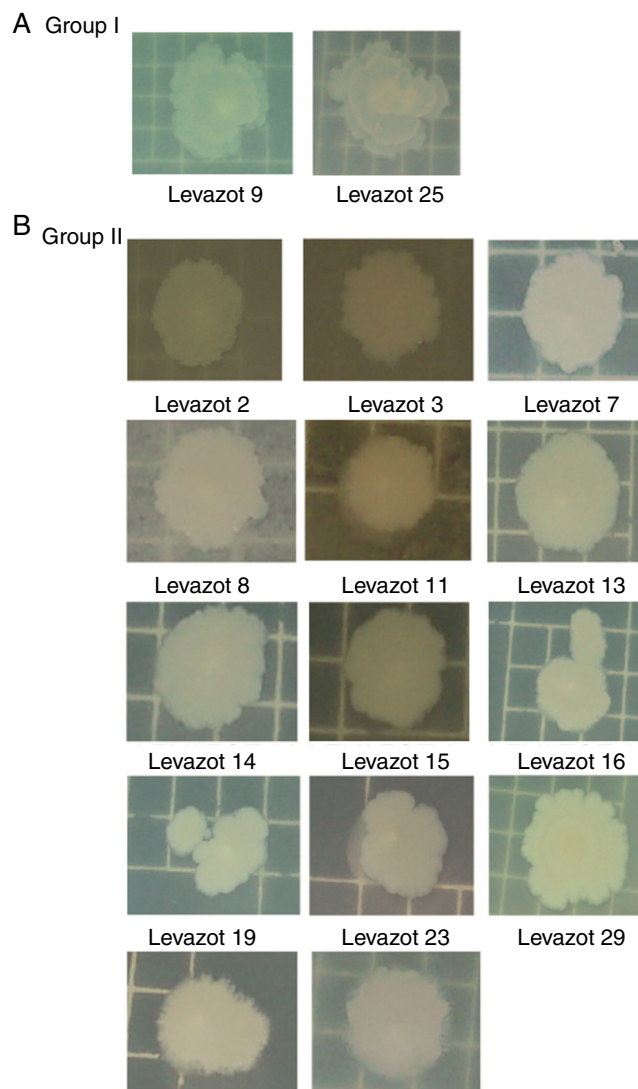


Fig. 1 – Colony characteristics of isolated Levazot strains.

to a 50-mL glass bottle containing 0.3 g of alfalfa hay and 0.3 g of oat straw as substrates. The chemical composition of the oat straw (% of dry basis) was as follows: OM, 88.7; CP, 5.3; ADF, 54.5; and NDF, 69.1. The bottles were incubated at 39 °C with shaking at 120 rpm. The gas levels were measured after 48 h of fermentation by bubble displacement in a 10-mL syringe.

Statistical analysis

In vitro gas production data were analyzed by a fully randomized analysis of variance using SAS PROC MIXED²⁹ with a model that included the Levazot strains as fixed effects, the *S. cerevisiae* strain (control), a blank without yeasts, the fermentation time, and the interaction of both (strains and time). The random effect was the bottle (experimental unit) nested into the yeast strain. Comparison of means was performed using the PDIF procedures,²⁹ and the differences were determined to be statistically significant at $p < 0.05$ or as indicated.

Results and discussion

Isolation and characterization of Levazot strains

Sixteen yeast strains resistant to the ruminal ecosystem were isolated using *in vitro* ruminal fermentation of FAB combined with alfalfa hay. The strains were designated Levazot, followed by the isolate number (Fig. 1). Based on the colony characteristics, the Levazot strains were divided into two groups. Group I contained two strains, Levazot 9 and Levazot 25, which developed white-colored, flat colonies, with irregular edges and a central papilla surrounded by a halo (Fig. 1). Group II contained Levazot strains 2, 3, 7, 8, 11, 13, 14, 15, 16, 19, 23, 29, 30, and 31, which formed white, creamy, flat colonies, with irregular edges, a papilla surrounded by a creamier circle, and a small downiness on the edges (Fig. 1). Based on the microscopic observations, only Levazot strains 2, 3, and 4 developed true mycelia, while the rest formed pseudomycelia, and none formed ballistospores. The biochemical test in which the oxygen relation was measured showed that in liquid medium all Levazot strains grew on the surface, forming a thin ring layer. The growth was from the surface to the inside of the medium, and all strains formed sediment (data not shown). The biochemical tests showed that all Levazot strains were negative for urea hydrolysis and positive for starch fermentation. Also, all the strains were able to grow in the specific culture medium

for non-*Saccharomyces* yeasts and under high osmotic pressure conditions.

Molecular characterization of Levazot yeast strains

To determine the taxonomic identity of the Levazot yeasts, the 18S rRNA gene was amplified from each isolate and sequenced, and the sequences were submitted to the GenBank database (Table 1). Bioinformatic analysis using BLASTn showed that all Levazot yeast isolates had 99–100% sequence identity with *C. norvegensis* and *I. orientalis*. To determine the genetic distances between the Levazot strains, *C. norvegensis*, and *I. orientalis*, a phylogenetic analysis was performed (Fig. 2), which assigned all Levazot strains into clade A (100% bootstrap values), i.e., the same clade where *C. norvegensis* and *I. orientalis* belonged. Clade A was divided into groups A.I, which included only Levazot 29, and A.II (42.9% bootstrap value), in which the rest of the Levazot strains were clustered. In the latter group, only Levazot 31 was placed in a separated subclade (A.II.1). Subclade A.II.2, with a 37.6% bootstrap value, was separated into two subgroups, A.II.2.1, with only Levazot 19, and A.II.2.2, which was further divided into two subgroups, A.II.2.2.1 and A.II.2.2.2. In the A.II.2.2.1 subgroup (20.4% bootstrap value), Levazot strains 2, 3, 7, 8, 9, 11, 15, 16, 23, and 25 were clustered with *C. norvegensis*, while Levazot 13, Levazot 14, and *I. orientalis* were grouped into A.II.2.2.2, with a 14.2% bootstrap value.

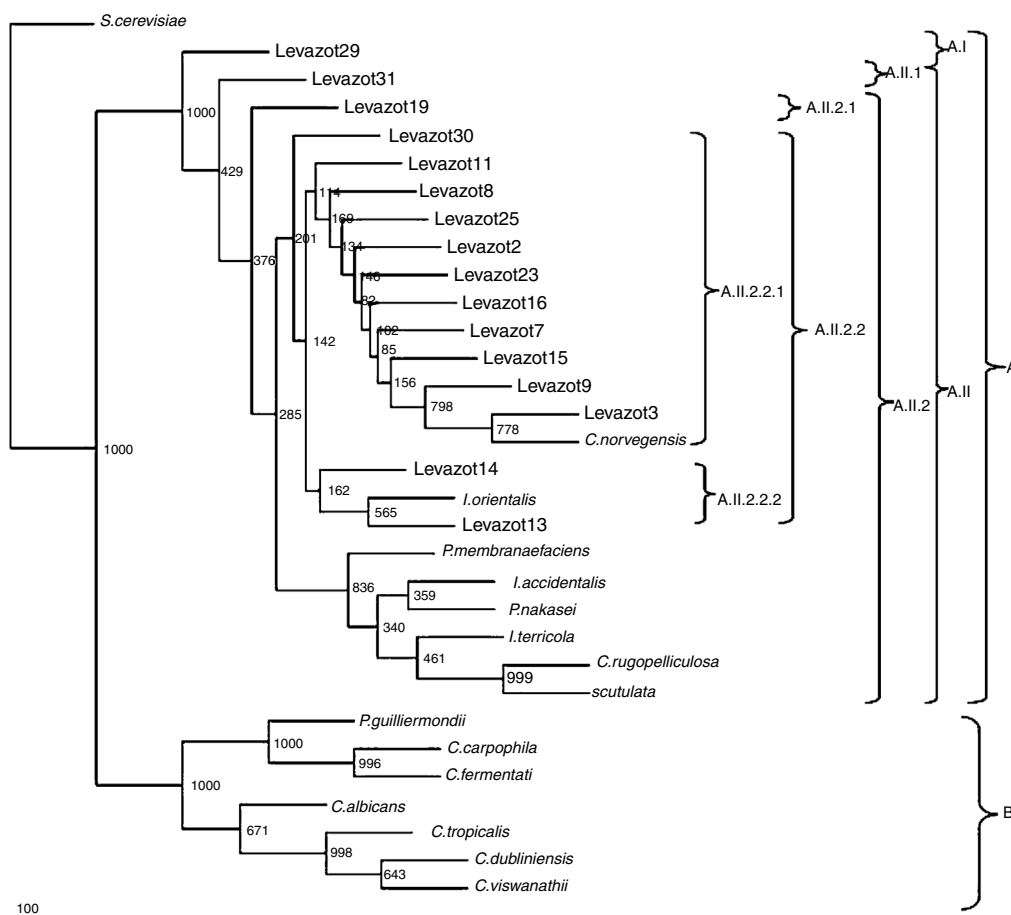


Fig. 2 – Phylogeny of Levazot strains isolated from *in vitro* fermented apple bagasse (FAB).

Table 1 – Identity of Levazot strains with yeast reported into GenBank, grouped by phylogenetic clade tree.

Phylogenetic Clade	Strain (GenBank Accession No.)															
	A. II.2.2.1											A.I	A.II.I	A.II.2.1	A.II.2.2.2	
	Levazot 30 (JQ519373.1)	Levazot 11 (JQ519364.1)	Levazot 8 (JQ519362.1)	Levazot 25 (JQ519371.1)	Levazot 2 (JQ519358.1)	Levazot 23 (JQ519371.1)	Levazot 16 (JQ519368.1)	Levazot 7 (JQ519361.1)	Levazot 15 (JQ519367.1)	Levazot 9 (JQ519363.1)	Levazot 3 (Q519359.1)	Levazot 29 (JQ519372.1)	Levazot 31 (JQ519374.1)	Levazot 19 (Q519369.1)	Levazot 14 (JQ519366.1)	Levazot 13 (JQ519365.1)
<i>C. norvegensis</i> AF201302.1	100	100	100	99	100	100	99	100	99	100	99	100	100	100	99	99
<i>I. orientalis</i> EF550360.1	100	100	100	99	100	100	99	100	99	100	99	100	100	100	99	99
<i>C. albicans</i> KC936147.1	92	92	92	92	91	91	92	97	92	91	92	92	92	92	91	92
<i>I. occidentalis</i> AB053240.2	98	98	98	98	98	98	98	98	98	98	98	98	98	98	98	98
<i>I. scutulata</i> EF550381.1	98	98	98	98	98	98	98	97	97	98	98	98	98	98	97	97
<i>I. terricola</i> EF550371.1	97	97	97	97	96	96	97	92	96	96	97	92	97	97	97	96
<i>C. tropicalis</i> JQ008834.1	92	92	92	92	91	91	92	92	92	91	92	93	92	92	91	92
<i>C. xestobii</i> AB013517.1	93	92	92	92	92	92	93	97	92	92	93	98	93	93	92	93
<i>P. membranefaciens</i> X96453.1	98	98	98	98	98	98	98	98	98	98	98	98	98	98	98	98
<i>C. rugopelluculosa</i> EF550376.1	98	98	98	98	98	98	98	98	97	98	98	98	98	98	97	97
<i>C. carpophila</i> AJ508270.1	92	92	92	99	91	91	92	91	91	91	92	92	92	92	91	92
<i>C. fermentati</i> AY553853.1	92	92	92	92	92	92	92	92	92	92	92	93	92	92	92	92
<i>C. dubliniensis</i> X99399.1	92	92	92	92	91	91	91	92	91	91	92	92	92	92	90	92
<i>C. viswanathii</i> EU589205.1	92	92	92	92	91	91	92	92	92	91	92	92	92	92	91	92
<i>P. nakasei</i> EF550386.1	98	98	98	98	98	98	98	98	97	98	97	98	98	98	97	97
<i>S. cerevisiae</i> JQ409454.1	93	93	93	93	92	92	93	92	92	92	93	93	93	93	92	92

Table 2 – Fermentative capacity of Levazot strains by gas production at 48 h of fermentation using alfalfa hay as substrate.

Strain	Accumulated gas (mL)	SEM
Levazot 2	78.88 ^{bc}	2.55
Levazot 3	81.71 ^{bcd}	2.55
Levazot 7	77.22 ^{bc}	2.55
Levazot 8	81.38 ^{bcd}	2.55
Levazot 9	80.96 ^{bcd}	2.55
Levazot 11	77.55 ^{bc}	2.55
Levazot 13	83.79 ^{cdef}	2.55
Levazot 14	89.78 ^{fg}	2.55
Levazot 15	97.6 ^h	2.55
Levazot 16	89.87 ^{fg}	2.55
Levazot 23	90.78 ^{fg}	2.55
Levazot 29	88.53 ^{efg}	2.55
Levazot 30	92.36 ^{gh}	2.55
Levazot 31	91.53 ^{gh}	2.55
Control	53.40 ^a	2.55
<i>S. cerevisiae</i> L/25-7-13	75.14 ^b	2.55

Means with different superscript letters are significantly different ($p < 0.05$).

SEM, standard error of means.

According to the *Candida* classification by Cardenas,³⁰ *C. norvegensis* has the ability to assimilate starch, which agrees with the results presented in Table 1, but is not able to hydrolyze urea. None of the strains isolated in this study was ureolytic, but all fermented starch, unlike *I. orientalis*, which does not assimilate starch and is variable for hydrolysis of urea.³⁰ Taken together, it is possible to infer, based on the facts that the genetic distances between Levazot strains 2, 3, 7, 9, 15, 16, and 23 and *C. norvegensis* are very small and the strains have the same biochemical characteristics, that these new yeast strains belong to *C. norvegensis*, a species commonly isolated from cactus rots^{31–33} and occasionally isolated from human clinical samples.³⁴

In vitro gas production

To select the Levazot strain with the best fermentative capacity, the isolates were individually incubated with alfalfa hay and oat straw as substrates. The gas levels were measured at 48 h of fermentation (Table 2). All Levazot strains and *S. cerevisiae* had higher gas production levels than that observed in the no-yeast control ($p < 0.05$). This implied that these yeasts stimulated the process of fermentation. At the same time, Levazot strains 13, 14, 15, 16, 23, 29, 30, and 31 showed higher gas production levels than that of *S. cerevisiae* ($p < 0.05$). Because these Levazot strains showed similar behaviors when using alfalfa hay as a substrate, the same procedure was performed with oat straw, which is a lower-quality substrate than alfalfa. The results are shown in Table 3. Levazot 31 was the only strain that showed no statistical difference with *S. cerevisiae*; the rest had higher gas production levels ($p < 0.05$). These results are similar to the data reported by Marrero et al.²⁰ for Levica yeast strains isolated from the rumen, which produced more gas than *S. cerevisiae* with *Cynodon nlemfuensis* as a substrate. The statistical analysis confirmed that Levazot 15 demonstrated the highest gas production levels ($p < 0.05$) with both alfalfa

Table 3 – Fermentative capacity of Levazot strains by gas production at 48 h of fermentation using oat straw as substrate.

Strain	Accumulated gas (mL)	SEM
Levazot 14	56.16 ^c	1.46
Levazot 15	64.84 ^d	1.46
Levazot 16	57.79 ^c	1.46
Levazot 23	54.48 ^c	1.46
Levazot 24	54.42 ^c	1.46
Levazot 29	54.35 ^c	1.46
Levazot 30	54.48 ^c	1.46
Levazot 31	50.17 ^b	1.46
Control	42.24 ^a	1.46
<i>S. cerevisiae</i> L/25-7-13	49.49 ^b	1.46

Means with different superscript letters are significantly different ($p < 0.05$).

SEM, standard error of means.

hay and oat straw. Due to this, Levazot 15 is considered the most promising yeast strain to be used as a microbial additive to improve digestive fermentation of ruminants fed fibrous diets. The higher gas production level obtained with this strain is probably due to an increase in propionic acid synthesis,³⁵ which facilitates the formation of carbon dioxide (CO₂) via the succinate–propionate metabolic pathway.³⁶ *In vivo* and *in vitro* studies have shown increased rates of cellulose and NDF degradation in the presence of yeasts,^{37,38} which could explain the increase in the gas production level found in this work. Similar results were reported by Tang et al.,³⁹ who used straw of several cereals as substrates.

Thus, 16 new yeast strains (designated Levazot) were isolated and identified using *in vitro* ruminal fermentation of fermented apple bagasse in combination with alfalfa hay. Of these, strain Levazot 15 (*C. norvegensis*) showed the highest level of gas production in the *in vitro* tests with both alfalfa hay and oat straw, suggesting that this yeast strain enhanced ruminal digestion to a larger extent than the other strains. Therefore, we conclude that Levazot 15 could potentially be used as an additive to ruminant diets containing a high proportion of forage. Further studies are required on rumen digestion and metabolism and on productive performance of ruminants fed high-forage diets supplemented with these isolated yeast strains.

Conflict of interest

The authors declare no conflicts of interest.

REFERENCES

- Owen E, Smith T, Makkar H. Successes and failures with animal nutrition practices and technologies in developing countries: a synthesis of an FAO e-conference. *Anim Feed Sci Technol.* 2012;174:211–226.
- Salinas-Chavira J, Almaguer LJ, Aguilera-Aceves CE, Zinn RA, Mellado M, Ruiz-Barrera O. Effect of substitution of sorghum stover with sugarcane top silage on ruminal dry matter degradability of diets and growth performance of feedlot hair lambs. *Small Ruminant Res.* 2013;112:73–77.

3. Pandey A. Solid-state fermentation. *Biochem Eng J*. 2003;13:81–84.
4. Ramos JA, Elias A, Herrera F. Processes for production of energy-protein feed for animals. Effect of four energy sources on solid state fermentation of sugarcane. *Cuban J Agric Sci*. 2006;40:47–53.
5. Castillo-Castillo Y, Ruiz-Barrera O, Salinas-Chavira J, et al. Microbial kinetics, fermentative and chemical characteristics in solid state fermentation of apple bagasse. *Indian J Anim Sci*. 2012;82:1213–1216.
6. Miller-Webster T, Hoover WH, Holt M, Nocek JE. Influence of yeast culture on ruminal microbial metabolism in continuous culture. *J Dairy Sci*. 2002;85:2009–2014.
7. Lila ZA, Mohammed N, Yasui T, Kurokawa Y, Kanda S, Itabashi H. Effects of a twin strain of *Saccharomyces cerevisiae* live cells on mixed ruminal microorganism fermentation in vitro. *J Anim Sci*. 2004;82:1847–1854.
8. Plata F, Mendoza GD, Barcenagama JR, Gonzalez S. Effect of a yeast culture (*Saccharomyces cerevisiae*) on neutral detergent fiber digestion in steers fed oat straw based diets. *Anim Feed Sci Technol*. 1994;49:203–210.
9. Williams P, Tait C, Innes G, Newbold C. Effects of the inclusion of yeast culture (*Saccharomyces cerevisiae* plus growth medium) in the diet of dairy cows on milk yield and forage degradation and fermentation patterns in the rumen of steers. *J Anim Sci*. 1991;69:3016–3026.
10. Dann HM, Drackley JK, McCoy GC, Hutjens MF, Garrett JE. Effects of yeast culture (*Saccharomyces cerevisiae*) on prepartum intake and postpartum intake and milk production of Jersey cows. *J Dairy Sci*. 2000;83:123–127.
11. Castillo-Castillo Y, Ruiz-Barrera O, Burrola-Barraza E, et al. Inclusion levels of fermented apple bagasse on in vitro rumen fermentation of alfalfa hay. *J Agric Sci Technol A*. 2015;5:40–46.
12. Marrero Y, Ruiz O, Corrales A, et al. In vitro gas production of fibrous substrates with the inclusion of yeast. *Cuban J Agric Sci*. 2014;48:119–123.
13. Marrero Y, Castillo Y, Ruiz O, Burrola E, Angulo C. Feeding of yeast (*Candida* spp.) improves in vitro ruminal fermentation of fibrous substrates. *J Integr Agric*. 2015;14:514–519.
14. Ando S, Nishiguchi Y, Hayasaka K, Iefuji H, Takahashi J. Effects of *Candida utilis* treatment on the nutrient value of rice bran and the effect of *Candida utilis* on the degradation of forages in vitro. *Asian-Aust J Anim Sci*. 2006;19:806–810.
15. Marrero Y, Galindo J, Aldana AI, Moreira O, Cueto M. Efecto in vitro de *Saccharomyces cerevisiae* en la poblacion microbiana ruminal e indicadores fermentativos. *Rev Cubana Cienc Agric*. 2006;40:329–337.
16. Newbold CJ, Wallace RJ, McIntosh FM. Mode of action of the yeast *Saccharomyces cerevisiae* as a feed additive for ruminants. *Br J Nutr*. 1996;96:249–261.
17. Elias A, Lezcano O, Lezcano P, Cordero J, Quintana L. Descriptive review of the development of a technology of protein enrichment of sugar cane by solid state fermentation (*Saccharina*). *Rev Cubana Cienc Agric*. 1990;24:1.
18. Hungate RE. Chapter IV a roll tube method for cultivation of strict anaerobes. In: Norris JR, Ribbons DW, eds. *Methods in Microbiology*. Academic Press; 1969:117–132.
19. Caldwell DR, Bryant MP. Medium without rumen fluid for nonselective enumeration and isolation of rumen bacteria. *Appl Microb*. 1966;14:794–801.
20. Marrero Y, Galindo J, Alvarez E, et al. Methodology for the isolation and characterization of yeast from the ruminal ecosystem. *Cuban J Agric Sci*. 2005;39:45–50.
21. Marrero Y, Burrola-Barraza ME, Castillo Y, et al. Identification of leuca yeasts as a potential ruminal microbial additive. *Czech J Anim Sci*. 2013;58:460–469.
22. Borneman J, Hartin RJ. PCR primers that amplify fungal rRNA genes from environmental samples. *Appl Environ Microb*. 2000;66:4356–4360.
23. Altschul SF, Madden TL, Schäffer AA, et al. Gapped blast and psi-blast: a new generation of protein database search programs. *Nucleic Acids Res*. 1997;25:3389–3402.
24. Felsenstein J. Phylip – phylogeny inference package (version 3.2). *Cladistics*. 1989;5:164–166.
25. Thompson JD, Higgins DG, Gibson TJ. Clustal w: Improving the sensitivity of progressive multiple sequence alignment through sequence weighting, position-specific gap penalties and weight matrix choice. *Nucleic Acids Res*. 1994;22:4673–4680.
26. Kimura M. A simple method for estimating evolutionary rates of base substitutions through comparative studies of nucleotide sequences. *J Mol Evol*. 1980;16:111–120.
27. Saitou N, Nei M. The neighbor-joining method: a new method for reconstructing phylogenetic trees. *Mol Biol Evol*. 1987;4:406–425.
28. Theodorou MK, Williams BA, Dhanoa MS, McAllan AB, France J. A simple gas production method using a pressure transducer to determine the fermentation kinetics of ruminant feeds. *Anim Feed Sci Technol*. 1994;48:185–197.
29. Institute SAS. *User's Guide*. Cary, NC: SAS Institute Inc; 2002.
30. Cardenas CD [Doctoral thesis] *Yeasts of the genus candida of clinics origin. Evaluation of methods identification*. Canarias, Tenerife, España: Universidad de la Laguna; 2000.
31. Rosa CA, Morais PB, Hagler AN, Mendonça-Hagler LC, Monteiro RF. Yeast communities of the cactus *Pilosocereus arrabidae* and associated insects in the Sandy Coastal Plains of southeastern Brazil. *Antonie van Leeuwenhoek*. 1994;65:55–62.
32. Ganter PF, Quarles B. Analysis of population structure of cactophilic yeast from the genus *Pichia*: *P. cactophila* and *P. norvegensis*. *Can J Microbiol*. 1997;43:35–44.
33. Starmer WT, Schmedicke RA, Lachance MA. The origin of the cactus-yeast community. *FEMS Yeast Res*. 2003;3:441–448.
34. Guitard J, Angoultant A, Letscher-Bru V, et al. Invasive infections due to *Candida norvegensis* and *Candida inconspicua*: Report of 12 cases and review of the literature. *Med Mycol*. 2013;51:795–799.
35. Ruiz O, Castillo Y, Arzola C, et al. Effects of *Candida norvegensis* live cells on in vitro oat straw rumen fermentation. *Asian Australas J Anim Sci*. 2016;29:211–218.
36. Wollin MJ, Miller TL. In: Hobson PN, ed. *Microbe-Microbe Interactions. Rumen Microbial Ecosystem*. Essex, UK: Elsevier Science; 1988:343.
37. Olson KC, Caton JS, Kirby DR, Norton PL. Influence of yeast culture supplementation and advancing season on steers grazing mixed-grass prairie in the northern great plains: II. Rumen fermentation, site of digestion, and microbial efficiency. *J Anim Sci*. 1994;72:2158–2170.
38. Sullivan HM, Martin SA. Effects of *Saccharomyces cerevisiae* cultures on in vitro mixed ruminal microorganism fermentation. *J Dairy Sci*. 1999;82:2011–2016.
39. Tang SX, Tayo GO, Tan ZL, et al. Effects of yeast culture and fibrolytic enzyme supplementation on in vitro fermentation characteristics of low-quality cereal straws. *J Anim Sci*. 2008;86:1164–1172.