



## Medical Microbiology

# Combination of commercially available molecular assays and culture based methods in diagnosis of tuberculosis and drug resistant tuberculosis



Lamprini Gkaravela<sup>a</sup>, Matthaïos Papadimitriou-Oliuigeris<sup>b,1</sup>, Antigoni Foka<sup>a</sup>, Fevronia Kolonitsiou<sup>a</sup>, Anastasia Spiliopoulou<sup>a</sup>, Nikolaos Charokopos<sup>c</sup>, Apostolos Voulgaridis<sup>d</sup>, Maria Tsiamita<sup>d</sup>, Markos Marangos<sup>b</sup>, Evangelos D. Anastassiou<sup>a</sup>, Iris Spiliopoulou<sup>a,\*</sup>

<sup>a</sup> Department of Microbiology, School of Medicine, University of Patras, Rion, Patras, Greece

<sup>b</sup> Division of Infectious Diseases, School of Medicine, University of Patras, Rion, Patras, Greece

<sup>c</sup> Department of Pulmonology, Regional General Hospital of Pirgos, Pirgos, Greece

<sup>d</sup> Department of Pulmonology, University General Hospital of Patras, Rion, Patras, Greece

### ARTICLE INFO

#### Article history:

Received 31 July 2016

Accepted 27 April 2017

Available online 24 June 2017

Associate Editor: Jorge Sampaio

#### Keywords:

*Mycobacterium tuberculosis*

PCR

GenoType MTBDRplus

### ABSTRACT

Early diagnosis of tuberculosis is of major clinical importance. Among 4733 clinical specimens collected from 3363 patients and subjected to Ziehl–Neelsen microscopy, 4109 were inoculated onto Löwenstein–Jensen slants and 3139 in Bactec/9000MB. Polymerase Chain Reaction (PCR) was performed in 3139 specimens, whereas, a genotypic assay was directly applied in 93 *Mycobacterium tuberculosis* complex PCR-positive for isoniazid and rifampicin resistance detection specimens (GenoType MTBDRplus). Recovered *M. tuberculosis* isolates (64) as well as, 21 more sent from Regional Hospitals were tested for antimycobacterial resistance with a phenotypic (manual MGIT-SIRE) and a genotypic assay (GenoType MTBDRplus). PCR in the clinical specimens showed excellent specificity (97.4%) and accuracy (96.8%), good sensitivity (70.4%), but low positive predictive value (40.3%). MGIT-SIRE performed to *M. tuberculosis* did not confer a reliable result in 16 isolates. Of the remaining 69 isolates, 15 were resistant to streptomycin, seven to isoniazid, seven to ethambutol and five to rifampicin. GenoType MTBDRplus correctly detected isoniazid (seven) and rifampicin-resistant *M. tuberculosis* strains (five), showing an excellent performance overall (100%). Susceptibility results by the molecular assay applied directly to clinical specimens were identical to those obtained from recovered isolates of the corresponding patients. Combining molecular and conventional methods greatly contribute to early diagnosis and accurate susceptibility testing of tuberculosis.

© 2017 Sociedade Brasileira de Microbiologia. Published by Elsevier Editora Ltda. This is an open access article under the CC BY-NC-ND license (<http://creativecommons.org/licenses/by-nc-nd/4.0/>).

\* Corresponding author at: Department of Microbiology, School of Medicine, University of Patras, University Campus, Asklipeiou 1, Rion 26504, Patras, Greece.

E-mail: [spiliopl@upatras.gr](mailto:spiliopl@upatras.gr) (I. Spiliopoulou).

<sup>1</sup> Current address: Department of Internal Medicine, Hôpital du Jura, 2800 Delémont, Switzerland.

<http://dx.doi.org/10.1016/j.bjm.2017.04.001>

1517-8382/© 2017 Sociedade Brasileira de Microbiologia. Published by Elsevier Editora Ltda. This is an open access article under the CC BY-NC-ND license (<http://creativecommons.org/licenses/by-nc-nd/4.0/>).

## Introduction

Despite the declining incidence of tuberculosis in Europe, it still remains an important health issue.<sup>1,2</sup> The notification rate of tuberculosis steadily decreases in Greece during the last decade, however, there are certain concerns since the incidence is significantly high mainly due to underreporting.<sup>1–3</sup>

The prompt diagnosis of patients with active disease is challenging, even in developed countries with sufficient resources.<sup>4</sup> Tuberculosis diagnosis is mainly based on culture-based techniques characterized by a long turn-around time.<sup>5</sup> Today, in order to reduce the time of diagnosis, molecular assays combined with conventional methods are used, either directly in clinical specimens or in isolates recovered from cultures. Therefore, since acid-fast bacilli smears lack sensitivity and *Mycobacterium tuberculosis* (MTB) treatment is accompanied by complications, PCR based methods have been used for its identification directly in clinical specimens in order to rapidly aid clinicians.<sup>5,6</sup> Nowadays, clinical specimens originating from patients with suspicion of tuberculosis must be subjected to smear microscopy, culture, and MTB-PCR assays.<sup>5</sup> The delay in microbiologic confirmation of the disease combined with underreporting may provoke a delay in public health measures to identify and cure infected patients and households.

Another issue of increasing importance worldwide is the resistance of *M. tuberculosis* to first-line drugs.<sup>1,2</sup> This mainly arises from non-adherence to antimycobacterial treatment regimens, or the migration flow from regions with high rates of multi-drug resistant tuberculosis (MDR-TB).<sup>1,2,7</sup> Strains exhibiting resistance to both isoniazid (INH) and rifampicin (RMP) are characterized as MDR-TB.<sup>1</sup> Identification of resistance to first-line drugs is important to be posed as soon as possible since infection by such strains needs prolonged treatment and displays lower cure rates.<sup>6</sup> Nowadays, in addition to traditional methodology, DNA strip assays that can reliably detect the most common mutations associated with *rpoB* (RMP resistance) and *katG/inhA* (INH resistance) genes, such as GenoType MTBDRplus, can be applied in the Diagnostic Laboratory either at the DNA extracts of isolated strains, or directly to the clinical specimen.<sup>5,8</sup>

The aim of the present study was to evaluate the combination of molecular assays and conventional methods for the diagnosis of tuberculosis and characterization of antimicrobial resistance among *M. tuberculosis* isolates.

## Materials and methods

### Study population/sample collection

A total of 4733 clinical specimens were collected from 3363 patients attending the University General Hospital of Patras (UGHP) and the Regional General Hospital of Pirgos (RGHP), both located in Southwestern Greece, during a three-year period (January 2009 to December 2011). From many patients more than one sample was collected based on clinical grounds. The study was approved by the Ethics Committee of the UGHP.

The clinical specimens included: sputa ( $n=1233$ ), sputa after bronchoscopy (SAB,  $n=360$ ), bronchial lavages (BL,  $n=1087$ ), gastric aspirates ( $n=117$ ), urine ( $n=490$ ), pericardial ( $n=19$ ), peritoneal ( $n=10$ ), cerebrospinal (CSF,  $n=346$ ), synovial ( $n=20$ ), ascitic ( $n=201$ ) and pleural fluids ( $n=688$ ), as well as, tissue specimens ( $n=162$ ). Samples were assigned into two groups: pulmonary specimens ( $n=2680$ ) and extrapulmonary specimens ( $n=2053$ ).

### Direct detection of *M. tuberculosis* complex in clinical specimens

Ziehl–Neelsen (ZN) staining was performed to all clinical specimens (4733). In addition, molecular methods were performed among 3139 clinical specimens, according to manufacturer's instructions. Testing was performed whenever requested by the clinicians. COBAS AMPLICOR MTB PCR (Roche Diagnostics, Rotkreuz, Switzerland) was used in 814 specimens obtained during January to September of 2009, whereas, COBAS Taq-Man MTB (Roche Diagnostics) was applied afterwards in 2325 specimens, thereafter (October 2009–December 2011).

### Isolation of *M. tuberculosis* strains

Specimens collected from non-sterile sites were concentrated and decontaminated by the N-acetyl-cystein (NALC)–NaOH method (Becton Dickinson, Le Pont-De-Claix, France). Fig. 1 shows the processing of clinical specimens. Inoculation of 4109 specimens onto Löwenstein–Jensen slants (LJ, bioMérieux, Marcy l'Etoile, France) and 3139 into Bactec/9000MB culture vials (Becton Dickinson) was carried out. Into both media, 2515 specimens were inoculated. Acid-fast bacteria recovered from solid and liquid culture media were identified to species level by a reverse line blot hybridization (RLBH) assay (GenoType MycobacteriumCM/AS; Hain Lifescience GmbH, Nehren, Germany).

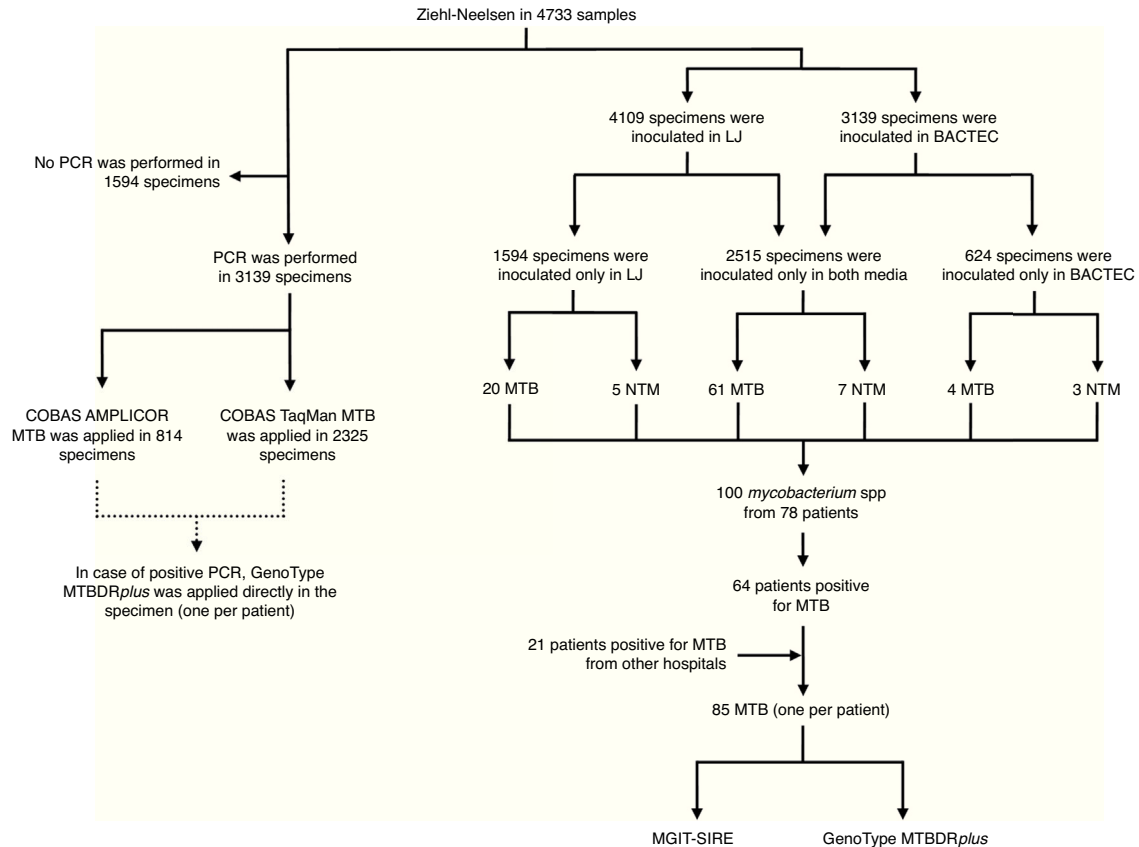
### Susceptibility testing

#### Molecular based method

In case of a positive PCR result for the presence of *M. tuberculosis* complex in the clinical specimens, GenoType MTBDRplus (Hain Lifescience GmbH) was directly applied in the DNA extract, in order to rapidly detect the presence of mutations conferring resistance to INH and RMP.

#### Culture based method

Sixty four MTB (one per patient) isolated from 3363 patients, and another 21 isolates obtained from patients hospitalized in other Regional Hospitals of Southwestern Greece that were sent to our Microbiology Laboratory, were tested for susceptibility to antimycobacterial agents. Susceptibility testing was performed by a phenotypic method (manual Mycobacteria Growth Indicator Tube, MGIT-SIRE; Becton Dickinson) for streptomycin, INH, RMP and ethambutol (concentrations tested: 0.1 mg/L, 1.0 mg/L, 1.0 mg/L and 5.0 mg/L, respectively). In order to identify the most common mutations conferring resistance to INH and RMP the GenoType MTBDRplus (Hain



**Fig. 1 – Clinical specimens' flowchart. ZN, Ziehl–Neelsen; LJ, Löwenstein–Jensen; MTB, *M. tuberculosis*; NTM, non-tuberculous mycobacteria; MGIT-SIRE, Mycobacteria Growth Indicator Tube for susceptibility testing.**

Lifescience GmbH) was applied according to the instructions of the manufacturer.

### Statistical analysis

SPSS version 19.0 (SPSS, Chicago, IL) software was used for data analysis. Specificity, sensitivity, positive and negative predictive values (PPV, NPV) were calculated in order to assess the diagnostic performance of ZN and PCR, as well as, the performance of GenoType MTBDRplus to INH and RMP resistance. The gold standard comparator for *M. tuberculosis* detection was positivity of liquid and/or LJ cultures, whereas, for INH and RMP resistance it was the manual MGIT-SIRE testing. The accuracy of aforementioned methods was investigated using receiver operating characteristic (ROC) analysis.

## Results

From a total of 4733 clinical specimens, 100 specimens collected from 78 patients (2.1%) were culture-positive for mycobacteria by either method. Ninety-three (2.3%) out of 4109 specimens inoculated onto LJ were positive, whereas, 75 out of 3139 (2.4%) were positive from Bactec vials. ZN was positive in 72 (1.5%) samples, 64 of which were pulmonary (2.4% vs 0.4%,  $p < 0.001$ ). Even though ZN showed high specificity, NPV, and accuracy for pulmonary and extrapulmonary specimens,

its sensitivity and PPV were low (Table 1). BL and SAB samples showed higher PPV as compared to sputa. Samples from which a “non-tuberculous mycobacteria” (NTM) were isolated did not demonstrate a positive ZN stain.

In total, 78 patients had positive culture by either media: 64 *M. tuberculosis*, three *M. kansasii*, three *M. fortuitum*, two *M. simiae* and one of each *M. avium*, *M. malmoense* and *M. goodii*. It was not possible to identify strains to species level from three patients, thus, they were classified as NTM (non-tuberculous mycobacteria).

From the 3139 clinical specimens tested by culture and PCR (COBAS AMPLICOR MTB PCR or COBAS TaqMan MTB), results were valid in 2958 specimens. Of these, 71 specimens (2.4%) were culture-positive and 124 (4.2%) PCR-positive for *M. tuberculosis* complex (Table 2). On the other hand, invalid results were found in 181 specimens (5.8%) (negative PCR result for the internal control), of which 125 were pulmonary (125/2122, 5.9%) and 56 extrapulmonary (56/1017, 5.5%). PCR showed high specificity, NPV, and accuracy, good sensitivity and poor PPV, especially for extrapulmonary fluids (gastric aspirates, urine, pericardial, peritoneal, CSF, synovial, ascitic, and pleural), as shown in Table 2. No statistically significant difference in the performance of COBAS AMPLICOR MTB PCR as compared to COBAS TaqMan MTB was observed. From the 85 total *M. tuberculosis* (64 being ours plus 21 from other sites, Fig. 1), phenotypic susceptibility testing by manual MGIT-SIRE did not confer a reliable result in 16 isolates (18.8%), due to medium

**Table 1 – Performance of Ziehl–Neelsen in the identification of culture-positive clinical specimens for mycobacteria.**

Clinical specimens	Number	Culture positive	Ziehl–Neelsen								
			TP	FP	TN	FN	Sensitivity	Specificity	PPV	NPV	Accuracy
Pulmonary specimens	2680	81	22	42	2557	59	27.2%	98.4%	34.4%	97.7%	96.2%
BL	1087	31	10	4	1052	21	32.3%	99.6%	71.4%	98.0%	97.7%
Sputa	1233	34	7	35	1164	27	20.6%	97.1%	16.7%	97.7%	95.0%
SAB	360	16	5	3	341	11	33.3%	99.1%	62.5%	96.9%	96.1%
Tissue	162	10	2	0	152	8	20.0%	100%	100%	95.0%	95.1%
Other fluids <sup>a</sup>	1891	9	0	6	1876	9	0.0%	99.7%	0.0%	99.5%	99.2%
All specimens	4733	100 <sup>b</sup>	24	48	4585	76	24.0%	99.0%	33.3%	98.4%	97.4%

TP, true positive; FP, false positive; TN, true negative; FN, false negative; PPV: positive predictive value; NPV, negative predictive value; BL, bronchial lavages; SAB, sputa after bronchoscopy.

<sup>a</sup> Gastric aspirates, urine, CSF, pericardial, peritoneal, synovial, ascitic, and pleural fluids.

<sup>b</sup> Included 85 *M. tuberculosis* and 15 “non-tuberculous mycobacteria” (NTM) strains.

contamination by other bacteria. From the remaining 69 isolates, 15 (21.7%) were resistant to streptomycin, seven (10.1%) to INH, seven (10.1%) to ethambutol and five (7.2%) to RMP.

The GenoType MTBDRplus method applied to all 85 isolates correlated very well with the conventional susceptibility method. Based on the mutations found, seven isolates were identified as resistant to INH (8.2%) and five to RMP (5.9%). The most common mutation patterns identified by this method are depicted in Table 3. Only one multi-drug resistant isolate was detected by phenotypic and/or genotypic methodologies. Three isolates (one MDR and two INH-resistant) exhibited a subpopulation of susceptible cells (additional hybridization with the wild type probe) originating from previously treated patients. The performance of GenoType MTBDRplus as compared to MGIT-SIRE among the 69 isolates for which both methods conferred a result, excellent (100%) sensitivity, specificity, PPV, NPV and accuracy were recorded for the identification of resistance to INH and RMP.

In addition, the application of GenoType MTBDRplus method directly to 93 PCR-positive clinical specimens from different patients (48 culture-negative specimens included), showed excellent performance for 72 samples with an OD >0.350 by COBAS AMPLICOR MTB PCR or a threshold cycle

Ct ≤36 by COBAS TaqMan MTB. No differences were detected among the susceptibility result of GenoType MTBDRplus when applied directly to specimens or the isolate recovered from the same patient (45 patients).

## Discussion

Despite the declining tuberculosis incidence in Europe, delay in the diagnosis by traditional culture-based methods has as a consequence serious adverse effects on treatment, and an increase of *M. tuberculosis* resistance rates to primary anti-tuberculous agents. Since sensitivity and PPV of ZN are poor, the application of new molecular methods is necessary for rapid, direct and reliable diagnosis of tuberculosis, as well as, identification of resistance.<sup>1,6</sup>

PCR (COBAS AMPLICOR MTB PCR or COBAS TaqMan MTB) showed high specificity, NPV and accuracy for the detection of *M. tuberculosis* complex from both pulmonary and extrapulmonary samples. PCR's sensitivity was higher when applied in pulmonary samples, as compared to extrapulmonary ones (71.4% vs 62.5%), probably due to the fact that the two PCR kits used in this study were designed for pulmonary samples

**Table 2 – Performance of PCR in the identification of culture-positive clinical specimens for *M. tuberculosis* (excluding 181 samples for which PCR result was invalid).**

Clinical specimens	Number	Culture positive	PCR <sup>a</sup>								
			TP	FP	TN	FN	Sensitivity	Specificity	PPV	NPV	Accuracy
Pulmonary specimens	1997	63	45	45	1889	18	71.4%	97.7%	50.0%	99.1%	96.8%
BL	998	27	22	26	945	5	81.5%	97.3%	45.8%	99.5%	96.9%
Sputa	699	25	15	13	661	10	60.0%	98.1%	53.6%	98.5%	96.7%
SAB	300	11	8	6	283	3	72.7%	97.9%	57.1%	99.0%	97.0%
Tissue	63	3	3	4	56	0	100%	93.3%	42.9%	100%	93.7%
Other fluids <sup>b</sup>	898	5	2	25	868	3	40.0%	97.2%	7.4%	99.7%	96.9%
All specimens	2958	71	50	74	2813	21	70.4%	97.4%	40.3%	99.3%	96.8%

TP, true positive; FP, false positive; TN, true negative; FN, false negative; PPV, positive predictive value; NPV, negative predictive value; BL, bronchial lavages; SAB, sputa after bronchoscopy.

<sup>a</sup> 774 samples were tested with COBAS AMPLICOR MTB PCR and the remaining 2184 samples with COBAS TaqMan MTB.

<sup>b</sup> Gastric aspirates, urine, CSF, pericardial, peritoneal, synovial, ascitic, and pleural fluids.



**Table 3 – Patterns of GenoType MTBDRplus results as compared to manual MGIT-SIRE.**

MGIT-SIRE	INH				MGIT-SIRE	RMP			
	MTBDRplus					MTBDRplus			
	katG	inhA	Result	Number		rpoB	Result	Number	
R	WT	ΔWT2, Mut2 (A-16G)	R	4	R	ΔWT2, ΔWT3, Mut2A (H526D), Mut2B (H526Y), Mut3 (S531L)	R	1	
R	WT	WT, Mut2 (A-16G)	R + S	3	R	ΔWT8, Mut2B (H526Y), Mut3 (S531L)	R	1	
S	WT	WT	S	62	R	ΔWT8, Mut3 (S531L)	R	1	
np	WT	WT	S	16	R	ΔWT2, ΔWT3, Mut3 (S531L)	R	1	
					R	WT, Mut1 (D516V)	R + S	1	
					S	WT	S	64	
					np	WT	S	16	

MGIT-SIRE, Mycobacteria Growth Indicator Tube for susceptibility testing; INH, isoniazid; RMP, rifampicin; Δ, deletion of hybridization signal with wild-type probes; WT, wild-type; Mut: mutation; R, resistant; S, susceptible; np, not performed due to contamination.

only, as published.<sup>9–11</sup> The overall reported sensitivity of PCR differed widely in previous publications (61.3–96.1%).<sup>10–14</sup> In our study, the overall PCR sensitivity was 70.4%, since only 72 (1.5%) specimens were smear-positive. The main advantage of PCR is speed, and, when combined with GenoType MTBDRplus assay directly in the PCR-positive specimen can minimize the time delay from specimen collection to effective treatment administration. This can also facilitate public health authorities to trace household contacts, especially in the case of resistant tuberculosis and stop further transmission.

The main drawbacks of PCR for the detection of *M. tuberculosis* complex are inhibition and presence of false positive results. Inhibition was observed in 5.8% of samples, none of which was culture positive. The percentage is slightly higher than previously reported (1.3–4.9%).<sup>9,10,12,15,16</sup> The relatively high percentage (2.5%) of PCR false positive results constitutes another controversial fact. There are two different etiologies for such an observation. Firstly, the burden of *M. tuberculosis* in the sample may be too low to yield a positive culture, and secondly, PCR remains positive for at least four months due to the presence of non-viable *M. tuberculosis*, as is the case after initiation of therapy.<sup>17,18</sup> The latter is true for our Institution, since it is not clear among clinicians that only smear and culture, and not PCR, should be ordered in case of follow-up to assess treatment efficacy and eradication of mycobacteria.

Combining the manual MGIT-SIRE and GenoType MTBDRplus results, resistance rates of INH (8.2%) and RMP (5.9%) are comparable to those previously reported from the Greek National Reference Laboratory for Mycobacteria.<sup>2</sup> On the contrary, an extremely high rate of resistance to streptomycin (21.7%) was observed, which is similar to that previously reported from our Institution.<sup>19</sup> A possible explanation is that MGIT-SIRE shows the highest discrepancy in identifying streptomycin resistance as compared to the performance of several other methods.<sup>20</sup> In a previous study from our Institution (2001–3), an equally high rate of streptomycin resistance was identified by the method of proportion we used.<sup>19</sup> Another plausible explanation is dissemination of resistant lineages in Southwestern Greece.

GenoType MTBDRplus showed excellent sensitivity, specificity, PPV, NPV and accuracy for the detection of INH and RMP resistance among *M. tuberculosis* isolates, as compared to

MGIT-SIRE. This method is also useful in cases of LJ slants and Bactec vial contamination where MGIT-SIRE cannot provide a result. In our study, contamination by other bacterial species was observed in 18.8% of the total samples. As shown in a metanalysis,<sup>8</sup> sensitivity of GenoType MTBDRplus was high for INH (95.9%) and RMP (98.9%) resistance detection. Among the five isolates that were resistant to RMP various mutations of the *rpoB* gene were detected. The types of mutations were similar to those found in a previous study from Greek patients affecting most commonly codons 531 and 526.<sup>21</sup> Among the seven INH-resistant isolates, all demonstrated the same mutation in the promoter region of *inhA* gene (A-16G). On the contrary, a different *inhA* mutation (C-15T) was detected in six among 19 INH-resistant *M. tuberculosis* isolates from the island of Crete, Greece, while, the remaining had a mutation in *katG* gene leading to different prevalent clones in different geographical locations.<sup>22</sup> The application of GenoType MTBDRplus additionally enabled the detection of a mixed population of susceptible and resistant cells to INH or RMP within the same sample. All three samples that exhibited heteroresistance originated from previously treated patients, which can explain the presence of mixed population. Apparently, the burden of the resistant population specifies the phenotypic susceptibility pattern of the isolate, which was always resistant in our study. If it was the other way around, further studies, like typing by mycobacterial interspersed repetitive unit-variable number of tandem repeats typing, should be necessary. Moreover, the excellent performance of GenoType MTBDRplus directly in the clinical specimen when the Ct ≤ 36 indicates that when the initial bacterial load of the sample is high enough, antimicrobial resistance for INH and RMP can be identified directly from the clinical specimen, during the early steps of laboratory diagnosis.

Despite the high accuracy of GenoType MTBDRplus in detecting *M. tuberculosis* resistance to INH and RMP, as well as, the contribution in identifying the occurrence of certain mutations directly from the PCR-positive specimen, this method cannot completely replace traditional phenotypic methods such as MGIT since it detects specific mutations.

Molecular methods represent a major contribution to the rapid diagnosis (COBAS AMPLICOR MTB PCR and COBAS Taq-Man MTB) or susceptibility testing (GenoType MTBDRplus) of

tuberculosis, since they can provide a rapid and reliable result to clinicians, while awaiting the result of traditional cultures (LJ and Bactec/9000MB) or susceptibility (MGIT-SIRE) methods. Conventional culture and susceptibility testing remain the gold standards for tuberculosis diagnosis, conferring the advantage of isolation of strains for further epidemiologic and resistance traits analyses. However, the combination of molecular and conventional methods contributes to the early tuberculosis diagnosis and drug resistance detection.

### Conflicts of interest

The authors have no conflicts of interest to declare.

### Acknowledgements

This study was supported by funds of the Department of Microbiology, University of Patras, Patras, Greece. We thank Prof. Loukia Zerva for critically reviewing this paper.

### REFERENCES

1. European Centre for Disease Prevention and Control/WHO Regional Office for Europe. *Tuberculosis Surveillance and Monitoring in Europe* 2014. Sweden: Stockholm; 2014.
2. Papaventsis D, Nikolaou S, Karabela S, et al. Tuberculosis in Greece: bacteriologically confirmed cases and anti-tuberculosis drug resistance, 1995–2009. *Euro Surveill.* 2010;15, pii:19614.
3. Jelastopulu E, Alexopoulos EC, Venieri D, et al. Substantial underreporting of tuberculosis in West Greece: implications for local and national surveillance. *Euro Surveill.* 2009;14, pii:19152.
4. Smith A, Miller RF, Story A, Booth HL. A&E department: a missed opportunity for diagnosis of TB? *Thorax.* 2006;61:364–365.
5. Drobniowski F, Nikolayevskyy V, Maxeiner H, et al. Rapid diagnostics of tuberculosis and drug resistance in the industrialized world: clinical and public health benefits and barriers to implementation. *BMC Med.* 2013;11:190.
6. Blumberg HM, Burman WJ, Chaisson RE, et al. American Thoracic Society/Centers for Disease Control and Prevention/Infectious Diseases Society of America: treatment of tuberculosis. *Am J Respir Crit Care Med.* 2013;167:603–662.
7. Rovina N, Karabela S, Constantoulakis P, et al. MIRU-VNTR typing of drug-resistant tuberculosis isolates in Greece. *Thorax.* 2011;5:229–236.
8. Bwanga F, Hoffner S, Haile M, Joloba ML. Direct susceptibility testing for multi drug resistant tuberculosis: a meta-analysis. *BMC Infect Dis.* 2009;9:67.
9. Bloemberg GV, Voit A, Ritter C, Deggim V, Bottger EC. Evaluation of Cobas TaqMan MTB for direct detection of the *Mycobacterium tuberculosis* complex in comparison with Cobas Amplicor MTB. *J Clin Microbiol.* 2013;51: 2112–2117.
10. Cho WH, Won EJ, Choi HJ, et al. Comparison of AdvanSure TB/NTM PCR and COBAS TaqMan MTB PCR for detection of *Mycobacterium tuberculosis* complex in routine clinical practice. *Ann Lab Med.* 2015;35:356–361.
11. Tortoli E, Urbano P, Marcelli F, Simonetti TM, Cirillo DM. Is real-time PCR better than conventional PCR for *Mycobacterium tuberculosis* complex detection in clinical samples? *J Clin Microbiol.* 2012;50:2810–2813.
12. Fegou E, Jelastopulu E, Sevdali M, Anastassiou ED, Dimitracopoulos G, Spiliopoulou I. Sensitivity of the Cobas Amplicor system for detection of *Mycobacterium tuberculosis* in respiratory and extrapulmonary specimens. *Clin Microbiol Infect.* 2005;11:593–596.
13. Wang SX, Tay L. Evaluation of three nucleic acid amplification methods for direct detection of *Mycobacterium tuberculosis* complex in respiratory specimens. *J Clin Microbiol.* 1999;37:1932–1934.
14. Yang YC, Lu PL, Huang SC, Jenh YS, Jou R, Chang TC. Evaluation of the Cobas TaqMan MTB test for direct detection of *Mycobacterium tuberculosis* complex in respiratory specimens. *J Clin Microbiol.* 2011;49: 797–801.
15. Huh HJ, Kwon HJ, Ki CS, Lee NY. Comparison of the genedia MTB detection kit and the cobas TaqMan MTB assay for detection of *Mycobacterium tuberculosis* in respiratory specimens. *J Clin Microbiol.* 2015;53:1012101–1012104.
16. Kim JH, Kim YJ, Ki CS, Kim JY, Lee NY. Evaluation of Cobas TaqMan MTB PCR for detection of *Mycobacterium tuberculosis*. *J Clin Microbiol.* 2011;49:173–176.
17. Cohen RA, Muzaffar S, Schwartz D, et al. Diagnosis of pulmonary tuberculosis using PCR assays on sputum collected within 24 hours of hospital admission. *Am J Respir Crit Care Med.* 1998;157:156–161.
18. Panaiotov S, Amicosante M. Dynamics of the laboratory results in patients with pulmonary tuberculosis. *Diagn Microbiol Infect Dis.* 2010;67:327–332.
19. Fegou E, Jelastopulu E, Nicolaou S, et al. Comparison of the manual *Mycobacteria* Growth Indicator tube and the Etest with the method of proportion for susceptibility testing of *Mycobacterium tuberculosis*. *Chemotherapy.* 2006;52:174–177.
20. Banu S, Rahman SM, Khan MS, et al. Discordance across several methods for drug susceptibility testing of drug-resistant *Mycobacterium tuberculosis* isolates in a single laboratory. *J Clin Microbiol.* 2014;52:156–163.
21. Matsiota-Bernard P, Vrioni G, Marinis E. Characterization of *rpoB* mutations in rifampin-resistant clinical *Mycobacterium tuberculosis* isolates from Greece. *J Clin Microbiol.* 1998;36:20–23.
22. Gitti Z, Mantadakis E, Maraki S, Samonis G. GenoType(R) MTBDRplus compared with conventional drug-susceptibility testing of *Mycobacterium tuberculosis* in a low-resistance locale. *Future Microbiol.* 2011;6:357–362.