

CLINICAL SCIENCE

Expression of e-cadherin, n-cadherin and snail and their correlation with clinicopathological variants: an immunohistochemical study of 132 invasive ductal breast carcinomas in Egypt

Hanan Mohamed Abd ElMoneim,^I Nasser Mohammed Zaghloul^{II}^IDepartment of Pathology, Faculty of Medicine, Minia University, Minia, Egypt. ^{II}Department of Surgery, Faculty of Medicine, Minia University, Minia, Egypt.

OBJECTIVE: To evaluate the expression of the cell adhesion molecules E-cadherin and N-cadherin and the transcription factor Snail in invasive ductal breast carcinomas and to determine their relationships with clinicopathological features.

METHODS: Immunohistochemistry was used to examine E-cadherin, N-cadherin, and Snail protein expression in 132 invasive breast carcinomas.

RESULTS: The expression of E-cadherin was decreased (negative or weak) in 37.1% of invasive carcinomas, while N-cadherin and Snail overexpression were detected in 51.9% and 40.9% of carcinomas, respectively. Low E-cadherin expression was significantly correlated with poorly differentiated carcinoma (53.1%), positive node status (80.9%), poor Nottingham Prognostic Index (64.7%), and the presence of estrogen and progesterone receptors. Overexpression of N-cadherin and Snail were also significantly correlated with poorly differentiated carcinoma, positive node status, and poor Nottingham Prognostic Index but were correlated with the absence of hormone receptors. Loss of E-cadherin immunoreactivity was strongly associated with the presence of membranous N-cadherin (87.8%) and nuclear Snail (69.4%).

CONCLUSION: Loss of E-cadherin and overexpression of N-cadherin and Snail in breast carcinomas may play a central role in the development of invasive ductal breast carcinoma. These biomarkers may provide a valuable reference for the study of invasive ductal carcinoma progression and to characterize the biological behavior of the tumor. In the future, increased N-cadherin and decreased E-cadherin expression may be used as indicators of the progression and prognosis of invasive ductal carcinoma.

KEYWORDS: E-cadherin; Immunohistochemistry; Invasive ductal carcinoma; N-cadherin; Snail.

ElMoneim HMA, Zaghloul NM. Expression of e-cadherin, n-cadherin and snail and their correlation with clinicopathological variants: an immunohistochemical study of 132 invasive ductal breast carcinomas in Egypt. Clinics. 2011;66(10):1765-1771.

Received for publication on May 22, 2011; First review completed on May 31, 2011; Accepted for publication on July 4, 2011

E-mail: annglasgow@hotmail.com

Tel.: 0020106860230

INTRODUCTION

Breast cancer is the most common cancer among Egyptian women. According to the most recent (2007) registry of the Egyptian National Cancer Institute, breast cancer represents 34.26% of female cancers.¹

Embryonic development, tissue remodeling, restitution and wound repair are key biological processes that require epithelial cells to escape from the rigid structural constraints of their tissue architecture and achieve cell migration and movement. The epithelial-mesenchymal transition (EMT) is

a fundamental and highly conserved process that achieves this morphogenetic transformation.^{2,3} The progression of breast cancer is often accompanied by changes in the pattern of gene expression of neoplastic cells, resulting in a highly tumorigenic and invasive cell phenotype. Some of these changes are reminiscent of EMT, as they result in a loss of epithelial features and a gain of mesenchymal properties.⁴ In epithelial tumors, changes in the profile and activity of adhesion molecules accompany malignant progression.⁵ E-cadherin, the prototypical adhesion molecule expressed in epithelial cells, is frequently lost in epithelial malignancies, whereas N-cadherin, which is absent in normal epithelia, is up-regulated in many invasive tumors.⁵⁻⁸ In aggressive tumors, EMT is characterized by reduced E-cadherin and increased N-cadherin expression, contributing to a stroma-oriented cellular adhesion profile, increased tumor cell motility and other invasive properties.⁹ Thus, the localized occurrence of EMT allows the tumor to progress to invasive

This is an Open Access article distributed under the terms of the Creative Commons Attribution Non-Commercial License (<http://creativecommons.org/licenses/by-nc/3.0/>) which permits unrestricted noncommercial use, distribution, and reproduction in any medium, provided the original work is properly cited.

No potential conflict of interest was reported.

cancer and metastatic disease.^{10,11} In human breast cancer, N-cadherin is up-regulated in invasive ductal carcinomas and is further increased in tumors with metastatic potential.¹²

Snail belongs to the conserved Snail superfamily of transcription factors, which are expressed at different stages of development in different tissues.¹³ Recently, Snail has been implicated in the progression of human tumors via its regulation of E-cadherin.¹⁴ Specifically, Snail interacts with proximal E-boxes of the E-cadherin promoter to suppress its expression.¹⁵ Such transcriptional repression mechanisms have emerged as one of the crucial processes underlying the down-regulation of E-cadherin expression during development and tumor progression.

The main aim of this study was to evaluate whether E-cadherin, N-cadherin, and Snail expression could be used as markers of the progression of invasive ductal breast carcinoma. To this end, we investigated the correlations between the expression of these proteins and different clinicopathological variables in 132 cases of primary invasive ductal breast carcinoma.

MATERIAL AND METHODS

Formalin-fixed and paraffin-embedded tissue blocks of tumor samples from 132 patients diagnosed with invasive ductal breast carcinoma (IDC) at the Pathology Department of Minia University Hospital between 2007 and 2009 were included in this study. All carcinomas were ductal not otherwise specified, and 54 were characterized as ductal carcinoma in situ (DCIS) associated with invasive carcinoma. All cases were reviewed by H. M. Abd Elmoneim to confirm the diagnosis. The characteristics of these retrospective cohorts are detailed in Table 1. Patients were only enrolled in the study if paraffin blocks suitable for immunohistochemistry were available and adequate clinical parameters had been collected. Histologic type and grade for invasive cases were defined according to the WHO and modified Scarf-Bloom-Richardson classifications, respectively.¹⁶ Tumor staging was performed according to the Tumor, Node, Metastasis (TNM) system of the International Union Against Cancer.¹⁷

Nottingham Prognostic Index (NPI)

This index has been validated as a measure of breast cancer prognosis and incorporates tumor grade, tumor size, and number of involved axillary lymph nodes. These three items are expressed as scores that are added together. Prognosis is favorable if NPI is ≤ 3.5 , intermediate if > 3.5 but < 5.5 and poor if ≥ 5.5 . NPI values were calculated for 132 carcinomas.

Immunohistochemical staining

A streptavidin-biotin immunoperoxidase complex procedure was used for staining. Formalin-fixed, paraffin-embedded samples (4 μ m thick) were deparaffinized and rehydrated, and endogenous peroxidase activity was blocked with 3% H₂O₂ in methanol for 30 minutes. Antigen retrieval was carried out by microwave treatment in sodium citrate buffer (0.01 M, pH 6.0) for 10 minutes. Incubation with primary antibody was performed for E-cadherin (clone M3612, diluted 1:400; DAKO), N-cadherin (clone M3613, diluted 1:25; DAKO), Snail (clone CE2C3, diluted 1:100, Santa Cruz, CA, USA), estrogen receptor (ER) (clone 1D5, diluted 1:100; DAKO), and progesterone

Table 1 - Clinicopathological data of 132 invasive ductal breast carcinoma patients.

Clinicopathologic characteristics	No. (%) n = 132
Age (y)	
<50 years	52 (39.4%)
≥ 50 years	80 (60.6%)
Histology	
IDC	78 (59.1%)
IDC + DCIS	54 (40.9%)
Tumor size	
≤ 2 cm	15 (11.4%)
2-5 cm	82 (62.1%)
> 5 cm	35 (26.5%)
Grading	
I	10 (7.6%)
II	58 (43.9%)
III	64 (48.5%)
Lymph node status	
Negative	51 (38.6%)
1-3 positive	31 (25.8%)
> 3 positive	47 (35.6%)
Staging	
I	13 (9.8%)
II	70 (53%)
III	49 (37.2%)
NPI	
Favorable	16 (12.1%)
Moderate	48 (36.4%)
Poor	68 (51.5%)
ER status	
Negative	64 (48.5%)
Positive	68 (51.5%)
PR status	
Negative	67 (50.8%)
Positive	65 (49.2%)

NPI: Nottingham Prognostic Index; ER: estrogen receptor; PR: progesterone receptor.

receptor (PR) (clone 636, diluted 1:100; DAKO) for 2 hours, followed by incubation with biotinylated secondary antibody for 30 minutes at room temperature. Slides were developed with diaminobenzidine (Sigma, USA). Finally, sections were counterstained with hematoxylin, dehydrated, cleared, and mounted. Each batch of staining included a negative control section treated with phosphate-buffered saline (PBS) instead of primary antibodies.

Immunohistochemical evaluation

ER and PR expression were scored from 0 to 2 as follows: 0 (negative): less than 5% of nuclei stained; 1 (borderline): 5–19% of nuclei stained; 2 (positive): more than 20% of nuclei stained.¹⁸

E-cadherin and N-cadherin expression were classified on the basis of the intensity of staining, the portion of the circumference of the cytoplasmic membrane stained and the percentage of cells exhibiting membranous staining. Grade 0: negative (no membranous staining identified); 1+: weak (faint staining involving a portion of the circumference of the cytoplasmic membrane in at least 10% of neoplastic cells); 2+: positive (moderate to definitive staining of the membrane over 100% of the cytoplasmic circumference in at least 10% of neoplastic cells); 3+: positive (strong positive staining of the membrane over 100% of the cytoplasmic circumference in at least 10% of neoplastic cells). For practical and statistical purposes, we grouped the weakly

positive and negative cases together. Cases graded as moderate and strongly positive were considered positive tumors.¹⁹

Immunostaining with Snail produced cytoplasmic background staining in some cells, but only cells with nuclear protein accumulation indicative of transcriptional activity were considered positive. The sample was evaluated as positive, independently of intensity, if Snail was observed in >10% of nuclei. Cells that showed both nuclear and cytoplasmic staining were classified as positive for nuclear expression, in accordance with earlier studies.²⁰

Statistical analysis

Statistical analysis was performed using SPSS 16.0 for Windows (SPSS Inc., Chicago, IL). The chi-square test was performed to determine the correlations between clinicopathological parameters and protein expression. The Spearman's rho pairwise bivariate correlations test was used to estimate the relationships between the observed staining patterns. Results were considered significant at $p \leq 0.05$.

RESULTS

Population and tumor characteristics

Patient age ranged from 39 to 71 years (mean 52.67, standard deviation 8.188). The clinicopathological characteristics of the patients are summarized in Table 1.

There was no significant correlation between the expression of any protein studied and age group or histological type (intraductal or invasive).

As shown in Figure 1, the intercellular borders of the luminal cells of normal glandular structures present in breast carcinoma specimens were strongly stained by E-cadherin. The myoepithelial cells of ducts and ductules showed much weaker or negative staining at cell-cell borders. Intraductal portions of IDCs showed strong staining for E-cadherin. A total of 37.1% of samples had lost E-cadherin expression (negative or weak). The absence of E-cadherin protein was significantly associated with all adverse clinicopathological variables. Negative E-cadherin expression was observed in 10% of grade I, 24.1% of grade II, and 53.1% of grade III tumors. There was a significant difference in E-cadherin down-regulation between grading groups ($p = 0.001$). A reduction in E-cadherin expression was detected in 49% of samples from the negative lymph node group and 80.9% of samples from the >3 positive lymph nodes group. There was a significant correlation between E-cadherin expression and lymph node group ($p < 0.001$). Overall, 64.7% of the samples that were negative for E-cadherin immunorexpression were associated with poor NPI status ($p < 0.001$). The absence of E-cadherin was also associated with positive expression of ER and PR ($p < 0.01$ and 0.001 respectively) (Table 2).

As shown in Figure 2, normal breast ducts were negative for N-cadherin expression. Positive membranous expression (51.9% of cases) was associated with poor histologic differentiation. A significant correlation was found between N-cadherin expression and grading group ($p = 0.001$). N-cadherin expression was detected in 70% of grade I, 34.5% of grade II, and 65.6% of grade III samples. Similarly, 21.6% of samples from the negative lymph node group and 78.7% of samples from the >3 positive lymph nodes group were positive for N-cadherin expression ($p < 0.001$). N-cadherin

expression (75%) was associated with poor NPI status ($p < 0.001$). A significant inverse association between membranous expression of N-cadherin and positive hormone receptor status was also detected (Table 2).

Snail (Figure 3): It was negative in normal glandular structures present within breast carcinoma. Snail was detected in 40.9% of total numbers of tumors. A significant correlation exists between Snail expression and tumor grade, with increased Snail expression observed with increasing tumor grade. More than half of grade III tumors (56.2%) expressed Snail, while 20% and 27.6% of grade I and II tumors exhibited nuclear Snail expression. Snail was frequently detected in node-positive tumors (44.1%) and less frequently detected in node-negative tumors (15.7%) ($p < 0.001$). Snail expression (61.8%) was frequently observed in samples with poor NPI values ($p < 0.001$). We also found a statistically significant correlation between Snail expression and negative ER and PR levels (Table 2).

Relationship among E-cadherin, N-cadherin and Snail expression in IDCs

Weak expression of membranous E-cadherin was strongly associated with the presence of membranous N-cadherin (87.8%) ($p < 0.001$) and nuclear Snail (69.4%) ($p < 0.001$). A significant association was observed between nuclear Snail expression and the absence of membranous E-cadherin ($p < 0.001$; correlation coefficient -0.445). Positive associations were also observed between N-cadherin overexpression and the absence of membranous E-cadherin ($p < 0.001$; correlation coefficient -0.546) and the presence of nuclear Snail ($p < 0.001$; correlation coefficient -0.456) (Table 3).

DISCUSSION

Various signaling molecules and transcription factors regulate the expression of E-cadherin. Loss of E-cadherin induces epithelial-mesenchymal transition in several cancers, leading to increased tissue mobility and tumor invasion.²¹ In our study, E-cadherin was lost in 37.1% of tumors. Loss of E-cadherin-mediated cell adhesion is one of the key mechanisms involved in the metastatic conversion of epithelial cells and EMT.^{22,23} Partial or complete loss of E-cadherin is often correlated with an unfavorable prognosis, confirming that E-cadherin is important for maintaining the epithelial state.^{24,25} Furthermore, a significant correlation was found between the loss of E-cadherin and tumor grading group, lymph node group, and poor NPI status. The association of E-cadherin down-regulation with tumor grade has also been shown in other studies, although published results have been somewhat inconsistent;^{25,26} E-cadherin expression showed a significant relationship with lymph node metastases in one study,²⁷ while it was independent of lymph node status in another.²⁵ We also found associations between E-cadherin expression and ER and PR expression, in accordance with another study.²⁵ ER-positive tumors express normal amounts of E-cadherin protein, and the loss of ER and E-cadherin genes has been linked to disease progression in invasive carcinomas of the breast. However, in another study, E-cadherin expression was not associated with a positive ER or PR status.²⁸

In the present study, positive membranous expression of N-cadherin was detected in 51.9% of invasive ductal breast carcinoma samples and was associated with poor histologic

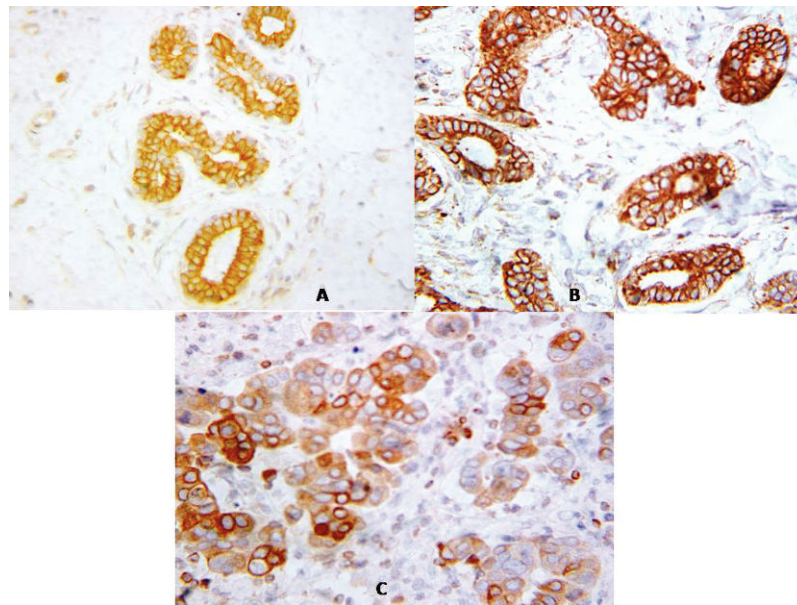


Figure 1 - (A) Immunohistochemical expression of E-cadherin was detected in normal breast glands. The luminal cells of the terminal ductules exhibit cytoplasmic membrane (linear intercellular) immunoreactivity, while no staining of the myoepithelial cells at the basal side of the epithelium was observed (X 400). **(B)** Immunohistochemical staining for E-cadherin in invasive ductal carcinomas of the breast. A well-differentiated tumor (grade I) showing strong cytoplasmic membrane staining localized almost exclusively to areas of cell-cell junctions is shown (X 400). **(C)** Poorly differentiated infiltrating ductal breast carcinomas (grade III) immunostained for E-cadherin, showing reduced and heterogeneous staining (X 400).

Table 2 - Expression of E-cadherin, N-cadherin and Snail in 132 invasive ductal breast carcinomas and their correlations with clinicopathological features.

Data	E-cadherin			N-cadherin			Snail		
	Negative (%)	Positive (%)	p-value	Negative (%)	Positive (%)	p-value	Negative (%)	Positive (%)	p-value
n = 132	49 (37.1)	83 (62.9)		63 (47.7)	69 (51.9)		78 (59.1)	54 (40.9)	
Age									
<50 years	19 (36.5)	33 (63.5)	0.9	22 (42.3)	30 (51.2)	0.3	30 (57.7)	22 (42.6)	0.7
≥50 years	30 (37.5)	50 (62.5)		41 (51.2)	39 (48.8)		48 (60)	32 (40)	
Tumor size									
≤2 cm	1 (6.7)	14 (93.3)	0.002	11 (73.3)	4 (26.7)	0.02	14 (93.3)	1 (6.7)	<0.01
2-5 cm	28 (34.1)	54 (65.9)		41 (50)	41 (50)		47 (57.3)	35 (42.7)	
>5 cm	20 (57.1)	15 (42.9)		11 (31.4)	24 (68.6)		17 (48.6)	18 (51.4)	
Histology									
IDC	30 (38.5)	48 (61.5)	0.7	35 (44.9)	43 (55.1)	0.4	48 (61.5)	30 (38.5)	0.4
IDC+DCIS	19 (35.2)	35 (64.8)		28 (51.9)	26 (48.1)		30 (55.6)	24 (44.4)	
Grade									
Grade I	1 (10)	9 (90)	0.001	3 (30)	7 (70)	0.001	8 (80)	2 (20)	0.002
Grade II	14 (24.1)	44 (39.7)		38 (65.5)	20 (34.5)		42 (72.4)	16 (27.6)	
Grade III	34 (53.1)	30 (46.9)		22 (34.4)	42 (65.6)		28 (43.8)	36 (56.2)	
LN status									
Negative	2 (49)	49 (96.1)	<0.001	40 (78.4)	11 (21.6)	<0.001	43 (84.3)	8 (15.7)	<0.001
1-3 positive	9 (26.5)	25 (73.5)		13 (38.2)	21 (61.8)		19 (55.9)	15 (44.1)	
> 3 positive	38 (80.9)	9 (19.1)		10 (21.3)	37 (78.7)		16 (34)	31 (66)	
Stage									
I	1 (7.7)	12 (92.3)	<0.001	10 (76.9)	3 (23.1)	<0.001	12 (92.3)	1 (7.7)	<0.001
II	10 (14.3)	60 (85.7)		46 (65.7)	24 (34.3)		50 (71.4)	20 (28.6)	
III	38 (77.6)	11 (22.4)		7 (14.3)	42 (85.7)		16 (32.7)	33 (67.3)	
NPI									
Favorable	0 (0)	16 (100)	<0.001	11 (68.8)	5 (31.2)	<0.001	15 (93.8)	1 (6.2)	<0.001
Moderate	5 (10.4)	43 (89.6)		35 (72.9)	13 (27.1)		37 (77.1)	11 (22.9)	
Poor	44 (64.7)	24 (35.3)		17 (25)	51 (75)		26 (38.2)	42 (61.8)	
ER status									
Negative	36 (56.2)	28 (43.8)	<0.001	22 (34.4)	42 (65.6)	0.001	24 (37.5)	40 (62.5)	<0.001
Positive	13 (19.1)	55 (80.9)		41 (60.3)	27 (39.7)		54 (79.4)	14 (20.6)	
PR status									
Negative	35 (52.2)	32 (47.8)	0.001	25 (37.3)	42 (62.7)	0.01	28 (41.8)	39 (58.2)	0.001
Positive	14 (21.5)	51 (78.5)		38 (58.5)	27 (41.5)		50 (76.9)	15 (23.1)	

LN: lymph node; NPI, Nottingham Prognostic Index; ER: estrogen receptor; PR, progesterone receptor. Test of significance: chi-square test. P-values ≤0.05 are considered statistically significant.

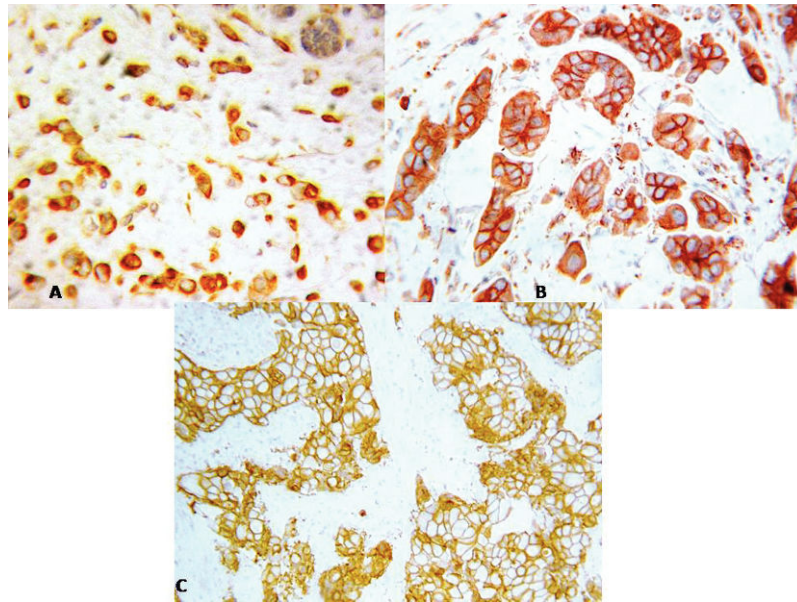


Figure 2. (A) N-cadherin overexpression in poorly differentiated invasive ductal carcinomas (grade III) showed positive cytoplasmic membrane staining for N-cadherin. Normal breast duct was negative for N-cadherin (upper right side) (X 400). (B) Immunohistochemical staining for N-cadherin in moderately differentiated invasive ductal carcinomas of the breast (grade II). Tumor cells show strong cytoplasmic membrane staining localized near cell-cell junctions (X 400). (C) Immunohistochemical staining for N-cadherin in invasive duct carcinomas of the breast. This poorly differentiated tumor (grade III) shows strong cytoplasmic membrane staining (X 400).

differentiation. N-cadherin expression was increased in samples from patients with high tumor grade, poor NPI, positive lymph node infiltration and negative hormone receptors. High levels of N-cadherin expression are observed in most high-grade invasive ductal carcinomas, and N-cadherin is increased further in metastasizing subtypes, such as micropapillary breast cancers.¹² This is

in agreement with other studies, which have reported that N-cadherin expression is significantly higher in poorly differentiated carcinomas than in moderately or well-differentiated invasive ductal carcinomas.^{25,29} N-cadherin expression is detected in pre-invasive lesions, suggesting that increased N-cadherin expression may be involved in the transition from intraductal to invasive carcinoma.

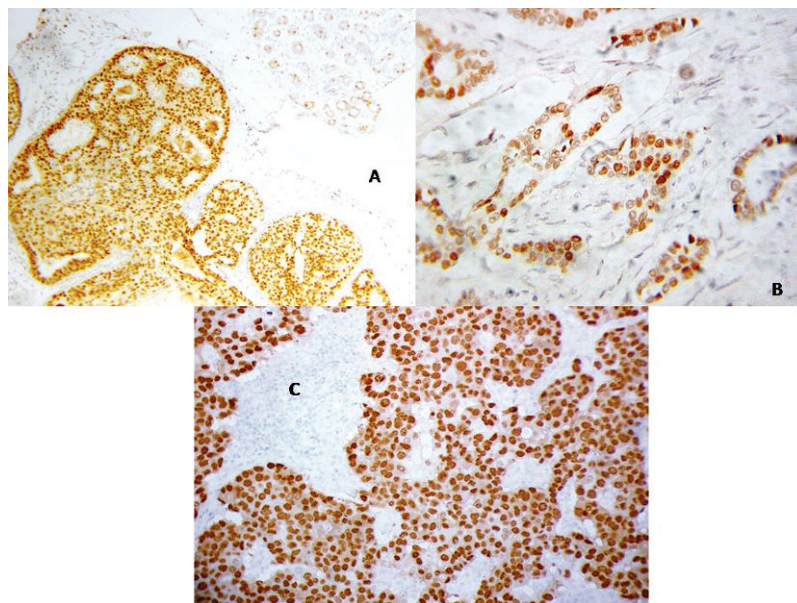


Figure 3 - (A) Immunohistochemical staining for Snail demonstrates strong nuclear localization in ductal carcinoma in situ of the breast (cribriform and solid types). The upper right side of the figure shows negative staining for Snail in normal human mammary gland lobules (X 200). (B) Immunohistochemical staining for Snail demonstrating nuclear localization in well-differentiated invasive ductal carcinomas of the breast (grade I). (X 400). (C) Immunohistochemical staining for Snail in invasive ductal carcinomas of the breast. This poorly differentiated tumor (grade III) exhibits strong nuclear staining (X 400).

Table 3 - Relationship among E-cadherin, N-cadherin and Snail expression in ductal breast carcinoma.

	N-cadherin			Snail		
	Negative (%)	Positive (%)	p-value	Negative (%)	Positive (%)	p-value
E-cadherin						
Negative (%)	6 (12.2)	43 (87.8)	<0.001	15 (30.6)	34 (69.4)	<0.001
Positive (%)	57 (68.7)	26 (31.3)		63 (75.9)	20 (24.1)	
Spearman correlation		-0.546	<0.001		-0.445	<0.001
N-cadherin						
Negative (%)				52 (82.5)	11 (17.5)	<0.001
Positive (%)				26 (37.7)	43 (62.3)	
Spearman correlation					-0.456	<0.001

Spearman's rho test. A two-sided P-value ≤0.05 was considered statistically significant.

Thus, N-cadherin is associated with tumor aggressiveness and metastatic potential and may contribute to tumor progression.^{12,30}

In our samples, Snail showed increased nuclear expression with increasing tumor grade. A relationship between Snail expression and cell differentiation has also been observed both in vitro and during early embryonic development.^{31,32} In addition, a correlation between Snail expression and lymph node status was detected in our study, i.e., Snail increased in node-positive tumors and decreased in node-negative tumors. This is in agreement with previous results, which showed that Snail expression correlates with the presence of lymph node metastases in IDCs. Snail was expressed in all IDCs with lymph node metastases, and all Snail-negative tumors were node-negative. Snail expression in epithelial cells induces not only profound changes in cell morphology but also the acquisition of tumorigenic and invasive properties. It has been concluded that Snail is involved in the progression of breast ductal carcinoma and may therefore serve as a marker of metastatic potential.³³ We also found that Snail expression was significantly increased in samples with poor NPI status. In a recent study, no association was found between Snail and any poor prognostic factors.³⁴ This contradicts previous findings that reported an association among Snail, poor prognostic factors and the presence of metastasis.^{32,33,35} Here, we found statistically significant correlations between Snail and ER and PR protein expression levels. Snail is a repressor that down-regulates the expression of aromatase (estrogen synthetase) in healthy breast tissue.³³ It has been suggested that Snail may have a protective role against cancer in healthy breast tissue.³⁶

Transcriptional silencing can cause reduced expression of E-cadherin.³⁷ Interestingly, zinc finger transcription factors such as Snail are important for the epithelial-mesenchymal transition in embryonic development, during which E-cadherin expression is lost. Experimental knockdown of E-cadherin in epithelial breast cancer cell lines has confirmed that E-cadherin acts as a tumor suppressor.^{38,39} Our results reveal a significant association between the nuclear expression of Snail and the loss of membranous E-cadherin. Analyses of different mechanisms for E-cadherin inactivation in breast ductal carcinomas have shown that Snail is expressed in primary human tumors. A correlation between Snail expression and a reduction or lack of E-cadherin expression has been detected in a large number of tumors.^{32,33}

Here, we have shown that N-cadherin expression is associated with a loss of membranous E-cadherin (correlation

coefficient -0.546). Recent evidence indicates that N-cadherin is expressed in highly invasive tumor cell lines that lack E-cadherin expression. These findings raise the possibility that N-cadherin contributes to the invasive phenotype.⁴⁰ Cadherin switching from E- to N-cadherin in epithelial malignancies has often been attributed to a switch from an epithelial to a mesenchymal phenotype,⁴ and this cadherin switching is an important event in cancer progression.⁴¹ Importantly, cadherin switching has an independent prognostic effect on time to biochemical failure and clinical recurrence in multivariate survival analyses, and this effect was stronger than that of either E-cadherin or N-cadherin alone.⁹ Consistent with our findings, a recent study of soluble E-cadherin and N-cadherin as serum biomarkers in prostate cancer showed that an increased level of N-cadherin is a marker of ongoing EMT and tumor progression.^{42,43}

Down-regulation of E-cadherin and up-regulation of N-cadherin both occur at the transcriptional level. However, neither experimental knockdown nor experimental over-expression of N-cadherin interfered with morphological changes. In addition, the morphological changes associated with EMT preceded the down-regulation of E-cadherin.⁴⁴ Up-regulation of N-cadherin in epithelial tumor cells contributes to the invasive/metastatic phenotype.^{12,45}

In summary, our results indicate that N-cadherin is up-regulated in invasive ductal carcinoma of the breast. Loss of E-cadherin immunoexpression correlates significantly with tumor grade and other prognostic factors. N-cadherin expression in ductal breast carcinomas correlates with tumor aggressiveness, suggesting that cadherins could be useful for breast cancer diagnosis. Our present data strongly suggest the importance of EMT featuring increased N-cadherin and decreased E-cadherin expression in the progression and prognosis of patients with invasive ductal carcinoma. This switch is common and may be at least partly mediated by aberrant expression of Snail.

REFERENCES

- Mokhtar N, Gouda I, Adel I, eds. Cancer pathology registry 2003-2004 and time trend analysis. Department of pathology, NCI. 2007.
- Shook D, Keller R. Mechanisms, mechanics and function of epithelial-mesenchymal transitions in early development. *Mech Dev.* 2003; 120:1351-83, doi: 10.1016/j.mod.2003.06.005.
- Wu SY, Ferkowicz M, McClay DR. Ingression of primary mesenchyme cells of the sea urchin embryo: a precisely timed epithelial mesenchymal transition. *Birth Defects Res C Embryo Today.* 2007; 81:241-252, doi: 10.1002/bdrc.20113.
- Thiery JP. Epithelial-mesenchymal transitions in tumor progression. *Nat Rev Cancer.* 2002;2:442-454, doi: 10.1038/nrc822.

5. Cavallaro U, Christofori G. Multitasking in tumor progression: signaling functions of cell adhesion molecules. *Ann N Y Acad Sci.* 2004;1014:58-66, doi: 10.1196/annals.1294.006.
6. Cavallaro U, Schaffhauser B, Christofori G. Cadherins and the tumor progression: is it all in a switch? *Cancer Lett.* 2002;176:123-8, doi: 10.1016/S0304-3835(01)00759-5.
7. Hazan RB, Qiao R, Keren R, Badano I, Suyama K. Cadherin switch in tumor progression. *Ann N Y Acad Sci.* 2004;1014:155-63, doi: 10.1196/annals.1294.016.
8. Knudsen KA, Wheelock MJ. Cadherins and the mammary gland. *J Cell Biochem.* 2005;95:488-96, doi: 10.1002/jcb.20419.
9. Christiansen JJ, Rajasekaran AK. Reassessing epithelial to mesenchymal transition as a prerequisite for carcinoma invasion and metastasis. *Cancer Res.* 2006;66:8319-26, doi: 10.1158/0008-5472.CAN-06-0410.
10. Guarino M, Rubino B, Ballabio G. The role of epithelial-mesenchymal transition in cancer pathology. *Pathology.* 2007;39:305-18, doi: 10.1080/00313020701329914.
11. Neth P, Ries C, Karow M, Egea V, Ilmer M, Jochum M. The Wnt signal transduction pathway in stem cells and cancer cells: influence on cellular invasion. *Stem Cell Rev.* 2007;3:18-29, doi: 10.1007/s12015-007-0001-y.
12. Nagi C, Guttman M, Jaffer S, Qiao R, Keren R, Triana A, et al. N-cadherin expression in breast cancer: correlation with an aggressive histologic variant invasive micropapillary carcinoma. *Breast Cancer Research and Treatment.* 2005;94:225-35, doi: 10.1007/s10549-005-7727-5.
13. Seki K, Fujimori T, Savagner P, Hata A, Aikawa T, Ogata N, et al. Mouse Snail family transcription repressors regulate chondrocyte, extracellular matrix, type II collagen, and aggrecan. *Biol Chem.* 2003;278:41862-70, doi: 10.1074/jbc.M308336200.
14. Sugimachi K, Tanaka S, Kameyama T, Taguchi K, Aishima S, Shimada M, et al. Transcriptional repressor Snail and progression of human hepatocellular carcinoma. *Clin Cancer Res.* 2003;9:2657-64.
15. Bolos V, Peinado H, Perez-Moreno MA, Fraga MF, Esteller M, Cano A. The transcription factor Slug represses E-cadherin expression and induces epithelial to mesenchymal transitions: a comparison with Snail and E47 repressors. *J Cell Sci.* 2003;116:499-511, doi: 10.1242/jcs.00224.
16. Elston CW, Ellis IO. Pathological prognostic factors in breast cancer. The value of histological grade in breast cancer: experience from a large study with long-term follow-up. *Histopathology.* 1991;19:403-10, doi: 10.1111/j.1365-2559.1991.tb00229.x.
17. Hermanek P, Sobin LH. TNM classification of International Union against Cancer: TNM Atlas, 4th ed. 3rd revision. Berlin: Springer-Verlag, 1992.
18. Harvey JM, Clark GM, Osborne CK, Allred DC. Estrogen receptor status by immunohistochemistry is superior to the ligand-binding assay for predicting response to adjuvant endocrine therapy in breast cancer. *J Clin Oncol.* 1999;17:1474-81.
19. Toyama T, Zhang Z, Iwase H, Yamashita H, Ando Y, Hamaguchi M, et al. Low Expression of the Snail gene is a good prognostic factor in node negative invasive ductal carcinomas. *Jpn J Clin Oncol.* 2006;36:357-363, doi: 10.1093/jco/hyl038.
20. Blechschmidt K, Sassen S, Schmalfeldt B, Schuster T, Höfler H, Becker KF. The E-cadherin repressor Snail is associated with lower overall survival of ovarian cancer patients. *Br J Cancer.* 2008;98:489-95, doi: 10.1038/sj.bjc.6604115.
21. Baranwal S, Alahari SK. Molecular mechanisms controlling E-cadherin expression in breast cancer. *Biochem Biophys Res Commun.* 2009;384:6-11, doi: 10.1016/j.bbrc.2009.04.051.
22. Agiostratidou G, Hulit J, Phillips GR, Hazan RB. Differential cadherin expression: potential markers for epithelial to mesenchymal transformation during tumor progression. *J Mammary Gland Biol Neoplasia.* 2007;12:127-33, doi: 10.1007/s10911-007-9044-6.
23. Becker KF, Rosivatz E, Blechschmidt K, Kremmer E, Sarbia M, Höfler H. Analysis of the E-cadherin repressor Snail in primary human cancers. *Cells Tissues Organs.* 2007;185:204-212, doi: 10.1159/000101321.
24. Prasad CP, Rath G, Mathur S, Bhatnagar D, Parshad R, Ralhan R. Expression analysis of E-cadherin, Slug and GSK3 β in invasive ductal carcinoma of breast. *BMC Cancer.* 2009;9:325, doi: 10.1186/1471-2407-9-325.
25. Rakha EA, Abd El Rehim D, Pinder SE, Lewis SA, Ellis IO. E-cadherin expression in invasive non-lobular carcinoma of the breast and its prognostic significance. *Histopathology.* 2005;46:685-93, doi: 10.1111/j.1365-2559.2005.02156.x.
26. Asgeirsson KS, Jonasson JG, Tryggvadottir L, Olafsdottir K, Sigurgeirsdottir JR, Ingvarsson S, et al. Altered expression of E-cadherin in breast cancer. Patterns, mechanisms and clinical significance. *Eur J Cancer.* 2000;36:1098-106.
27. Jeschke U, Mylonas I, Kuhn C, Shabani N, Kunert-Keil C, Schindlbeck C, et al. Expression of E-cadherin in human ductal breast cancer, carcinoma in situ, invasive carcinomas, their lymph node metastases, their distant metastases, carcinomas with recurrence and in recurrence. *Anticancer Res.* 2007;27:1969-74.
28. Mohammadizadeh F, Ghasemibasir H, Rajabi P, Naimi A, Eftekhari A, Mesbah A. Correlation of E-cadherin expression and routine immunohistochemistry panel in breast invasive ductal carcinoma. *Cancer Biomark.* 2009;5:1-8.
29. Ma YH, Wang K, Li L, Lu ZH, Chen J. Expression of Twist, E-cadherin and N-cadherin in breast carcinoma and their clinical significance. *Zhonghua Bing Li Xue Za Zhi.* 2010;39:5-9.
30. Burstein HJ, Polyak K, Wong JS, Lester SC, Kaelin CM. Ductal carcinoma in situ of the breast. *N Engl J Med.* 2004;350:1430-41, doi: 10.1056/NEJMra031301.
31. Cano A, Perez-Moreno MA, Rodrigo I, Locascio A, Blanco MJ, del Barrio MG, et al. The transcription factor snail controls epithelial-mesenchymal transitions by repressing E-cadherin expression. *Nat Cell Biol.* 2000;2:76-83, doi: 10.1038/35000025.
32. Battle E, Sancho E, Franci C, Dominguez D, Monfar F, Baulida J, et al. The transcription factor snail is a repressor of E-cadherin gene expression in epithelial tumor cells. *Nat Cell Biol.* 2000;2:84-9, doi: 10.1038/35000034.
33. Blanco MJ, Moreno-Bueno G, Sarrío D, Locascio A, Cano A, Palacios J, et al. Correlation of Snail expression with histological grade and lymph node status in breast carcinomas. *Oncogene.* 2002;21:3241-46, doi: 10.1038/sj.onc.1205416.
34. Logullo AF, Nonogaki S, Pasini FS, DE Toledo OC, Soares FA, Brentani MM. Concomitant expression of epithelial-mesenchymal transition biomarkers in breast ductal carcinoma: Association with progression. *Oncology Reports.* 2010;23:313-20.
35. Elloul S, Bukholt Elstrand M, Nesland J, Trope C, Kvalheim G, Goldberg J, et al. Snail, Slug, and Smad-interacting protein 1 as novel parameters of disease aggressiveness in metastatic ovarian and breast carcinoma. *Cancer.* 2005;103:1631-43, doi: 10.1002/cncr.20946.
36. Martin TA, Goyal A, Watkins G, Jiang WG. Expression of the transcription factors Snail, Slug, and Twist and their clinical significance in human breast cancer. *Annals of Surgical Oncology.* 2005;12:488-96, doi: 10.1245/ASO.2005.04.010.
37. Peinado H, Olmeda D, Cano A. Snail, Zeb and bHLH factors in tumor progression: an alliance against the epithelial phenotype? *Nat Rev Cancer.* 2007;7:415-28, doi: 10.1038/nrc2131.
38. Hajra KM, Chen DY, Fearon ER. The SLUG zinc-finger protein represses E-cadherin in breast cancer. *Cancer Res.* 2002;62:1613-8.
39. Onder TT, Gupta PB, Mani SA, Yang J, Lander ES, Weinberg RA. Loss of E-cadherin promotes metastasis via multiple downstream transcriptional pathways. *Cancer Res.* 2008;68:3645-54, doi: 10.1158/0008-5472.CAN-07-2938.
40. Hazan RB, Phillips GR, Qiao RF, Norton L, Aaronson SA. Exogenous expression of N-cadherin in breast cancer cells induces cell migration, invasion, and metastasis. *J Cell Biol.* 2000;148:779-90, doi: 10.1083/jcb.148.4.779.
41. Wheelock MJ, Shintani Y, Maeda M, Fukumoto Y, Johnson KR. Cadherin switching. *J Cell Sci.* 2008;121:727-35, doi: 10.1242/jcs.000455.
42. Kuefer R, Hofer MD, Zorn CS, Engel O, Volkmer BG, Juarez-Brito MA et al. Assessment of a fragment of e-cadherin as a serum biomarker with predictive value for prostate cancer. *Br J Cancer.* 2005;92:2018-23, doi: 10.1038/sj.bjc.6602599.
43. Derycke L, De Wever O, Stove V. Soluble N-cadherin in human biological fluids. *Int J Cancer.* 2006;119:2895-900, doi: 10.1002/ijc.22219.
44. Maeda M, Johnson KR, Wheelock MJ. Cadherin switching: essential for behavioral but not morphological changes during an epithelium to mesenchyme transition. *J Cell Sci.* 2005;118:873-87, doi: 10.1242/jcs.01634.
45. Suyama K, Shapiro I, Guttman M, Hazan RB. A signaling pathway leading to metastasis is controlled by N-cadherin and the FGF receptor. *Cancer Cell.* 2002;2:301-14, doi: 10.1016/S1535-6108(02)00150-2.