



Elemental chemical composition and phase analysis by means of PIXE, DSC, TGA, and DRX of MTA Angelus[®] and a white Portland cement

Análisis químico elemental y de fases por medio de PIXE, DSC, TGA y DRX en MTA Angelus[®] y un cemento Portland blanco

Abigail Flores Ledesma,* Federico H Barceló Santana,[§] Lauro Bucio Galindo,^{||} Jesús Ángel Arenas Alatorre,^{||} José Luis Ruvalcaba Sil^{||}

ABSTRACT

Mineral trioxide aggregate (MTA) is a cement mainly used to seal tooth perforations; this is due to the fact that it hardens when in presence of humidity. It is composed of Portland cement and Bismuth trioxide. Objective: To analyze and compare with PIXE, DSC, TGA and DRX elementary chemical and phase composition of MTA Angelus[®] cement with a white Portland cement (WPC). **Material and methods:** MTA Angelus[®] white and a white Portland cement were analyzed with PIXE in a particle accelerator, phase analyses were conducted with XRD contrasting peaks with those in the ICDD database. DSC was conducted in a calorimeter up to 900 °C. **Results:** PIXE detected the following as greater percentage elements: aluminum, silica and calcium for both cements. Differences were found with sulfur percentages; Bismuth was only detected in MTA Angelus[®]. Trace elements of copper and strontium were detected in MTA Angelus[®] and zirconium in WPC. Relationship between silica-calcium and silica-aluminum was similar in both cements. In both cements, three crystalline phases were detected: dicalcium silicate, tricalcium silicate and tricalcium aluminate. Nevertheless, Bismite was identified in MTA Angelus[®] and calcium sulfate in the form of gypsum in WPC, this was corroborated with DSC technique. **Conclusions:** In MTA Angelus[®], low gypsum amounts were observed by means of calorimetry. In both cements, crystalline phases and elemental chemical composition were similar.

RESUMEN

El mineral trióxido agregado (MTA) es un cemento usado principalmente para sellar perforaciones en órganos dentales debido a que endurece en presencia de humedad, está compuesto por cemento Portland y trióxido de bismuto. Objetivo: Analizar y comparar por medio de PIXE, DSC, TGA y DRX la composición química elemental y de fases del cemento MTA Angelus[®] y de un cemento Portland blanco (CPB-CA). **Material y métodos:** MTA Angelus[®] blanco y un cemento Portland blanco fueron analizados con PIXE en un acelerador de partículas; el análisis de fases cristalinas se realizó por medio de DRX y contrastado los picos con los de base de datos del ICDD, el DSC se realizó en un calorímetro hasta 900 °C. **Resultados:** PIXE detectó como elementos de mayor porcentaje fueron aluminio, silicio y calcio para ambos cementos; habiendo diferencias en los porcentajes de azufre; el bismuto sólo se detectó en MTA Angelus[®]. Se detectaron como elementos traza cobre y estroncio en el MTA Angelus[®], además de zirconio en CPB-CA. La relación entre silicio-calcio y silicio-aluminio en los dos cementos es similar. Se identificaron tres fases cristalinas en ambos cementos, silicato dicálcico, silicato tricálcico y aluminato tricálcico; sin embargo, se identificó Bismite en el MTA Angelus[®] y sulfato de calcio en forma de yeso en CPB-CA, que se logró corroborar con la ayuda de la técnica DSC. **Conclusiones:** Se logró observar la baja cantidad de yeso en MTA Angelus[®] por medio de la calorimetría. Tanto las fases cristalinas como la composición química elemental son similares en ambos cementos.

Key words: Elemental chemical analysis, MTA, white Portland cement, PIXE, XRD, DSC, TGA.

Palabras clave: Análisis químico elemental, MTA, cemento Portland blanco, PIXE, DRX, DSC, TGA.

Appendix

English

PIXE: Particle Induced X ray Emission
SDC: Scanning Differential Calorimetry
TGA: Thermogravimetry
XRD: X Ray Diffraction
MTA: Mineral Trioxide Aggregate

Spanish

PIXE: Emisión de Rayos X inducido por partículas
DSC: Calorimetría diferencial de barrido
TGA: Termogravimetría
DRX: Difracción de Rayos X
MTA: Mineral Trióxido Agregado

* Resident, PhD of Dental Biomaterials Laboratory Science of the National University of Mexico (UNAM).

[§] Graduate and Research School, National School of Dentistry, National University of Mexico (UNAM).

^{||} Physics Institute, National University of Mexico (UNAM).

Received: November 2015. Accepted: January 2016.

This article can be read in its full version in the following page: <http://www.medigraphic.com/facultadodontologiaunam>

INTRODUCTION

In 1995, Torabinejad¹ first studied MTA as a material to be used to seal perforations within root and bifurcation canals in teeth. Other authors^{2,3} have studied MTA with respect to its physiochemical and mechanical properties, as well as its clinical applications^{4,5} and biological behavior.⁶ Since it has been reported that MTA composition is 80% Portland cement and 20% bismuth trioxide,⁷ many studies have been undertaken to compare physical, chemical and mechanical properties as well as clinical applications of MTA with Portland cement, considering a possible use in dentistry.^{8,9}

One of the characterization techniques that have been used to conduct chemical elemental analysis of this material is Energy Dispersion Spectroscopy (EDS) also called X Ray Energy Dispersion Analysis (EDAX) adapted to a scanning electron microscope.⁹⁻¹³ This technique provides the elements that compose the material, this is achieved with x ray emission after having been irradiated by an electron beam. One of the disadvantages of this technique is that it is a punctual analysis thus, several readings at several locations of the sample must be achieved; moreover, detection limits are low.¹⁴

In 2009, Belio-Reyes and Bucio¹⁵ studied the element composition of MTA ProRoot by means of Particle Induced X-rays Emission (PIXE). Since this is a technique used to identify trace elements it counts with a detection limit of 0.1-1ppm. This technique is based on the detection of X-ray spectrum characteristic peaks and their quantification according to their different intensities. One of the advantages of this technique is that it represents a non-destructive, multi-elemental analysis.¹⁶

Phase analysis by means of X-ray Diffraction (XRD) is widely used to study crystalline materials. The technique is based on obtaining a diffraction pattern for an individual crystalline phase; where a set of peaks corresponds to a given intensity and 2θ specific diffractions.¹⁷ Several authors have used this technique in their studies of comparison between MTA and Portland cements.^{8,10,13,15,18}

Many studies conducted on MTA are achieved with MTA ProRoot.^{10,12,15,18,19} Another brand is commercially available: MTA Angelus; this brand has not been the subject of many studies. The aim of the present study was to analyze and compare by means of PIXE, DSC, TGA, and XRD the elemental chemical composition and phases of MTA Angelus[®] (MTA-A) and a white Portland cement (WPC).

MATERIALS AND METHODS

For the present study MTA Angelus[®] was used (Angelus, Dental Products Manufacturer, Londrina,

Brazil, lot 12394) and a white Portland cement (Cruz Azul, Mexico, Lot 033442).

Chemical element analysis

PIXE was conducted in an Pelletron NEC accelerator (National Electrostatics Corp, Middletown WI) with a proton beam of 1 mm diameter and 3MeV. The sample was placed in front of both detectors, one of Si(Li) for light elements and one of LEGe for trace and heavy elements, for a period of 10 minutes. To gauge equipment, certified Portland cement was used: NISTSRM 1880a (National Institute of Standards and Technology).

Both results were processed with software (AXIL) tailored to detect all x-ray peaks characteristic of each element as well as conduct their quantification.

Crystalline phase analysis

X-ray diffraction by means of the powder method was achieved in a Brunker D8 Advance (Brunker D8 Advance (Brunker AXS GmbH, Karlsruhe, Germany) radiation Cu K α_1 , $\lambda = 1.5405\text{\AA}$) data were obtained from $2\theta = 8$ to 80 degrees. Afterwards, according to element analysis, obtained diffractograms were compared to PDF (Power Diffraction Files) database so as to find the group of peaks which would coincide among experimental data and some known phase within ICDD (International Center of Diffraction Data).²⁰

Thermal analysis

Differential scanning calorimetry (DSC) and thermogravimetry (TGA) were conducted in TA calorimeter (Instrument Calorimetry (SDT Q600, United States), from a room temperature up to 900°, with a rate of heating of 10 °C/min in an air atmosphere. Samples were placed in an alumina crucible, so as to obtain suitable calcium sulfate identification based on hydration degree, pure Naica gypsum was used as a reference.

RESULTS

Figure 1 and Table I present PIXE results. This analysis reveals that in both cements, elements found in greater percentage are aluminum, silica and calcium. Among them notable difference in Sulfur percentages was found, whereas Bismuth was only detected in MTA Angelus[®]. As trace elements, Copper and Strontium were found in MTA Angelus[®] and Zirconium in WPC. Relationship between Silica-Calcium and Aluminum -Calcium was obtained from a coefficient among percentages of each one of these elements (*Table II*).

Obtained diffraction patterns are presented in *figure 2*. Analysis of MTA-A and WPC phases indicates they are mainly composed of three similar phases: dicalcium silicate «C2S» (PDF: 70-0388) with the highest reflections of angles 2θ 32.07, 32.2, 32.62 and

34.41; tricalcium silicate «C3S» (PDF: 86:38-1429) with highest peaks at 29.35, 32.19 34.35 and 41.29; and the last phase, tricalcium aluminate «C3A» (PDF: 38-1429) with highest peaks at 33.16, 47.62 and 59.27. Bismite phase (PDF: 41-1449) with angles 2θ at 26.92, 27.37 and 33.03 was only detected in MTA-A; on the contrary, calcium phosphate in the form of gypsum (PDF: 03-0044) was detected in WPC, with more pronounced reflections at 11.64, 20.73 and at 43.47. *Table III* shows absorption coefficients of detected mineral phases.

TGA results in WPC indicated weight loss at 100 °C, this loss could be attributed to water evaporation of bi-hydrated calcium sulfate or gypsum. Samples were compared with Naica pure gypsum (*Figure 3*).

DSC showed thermal reaction at around 113 °C in WPC and at 141° in Naica gypsum, nevertheless, this endothermic flow was not observed in MTA Angelus®,

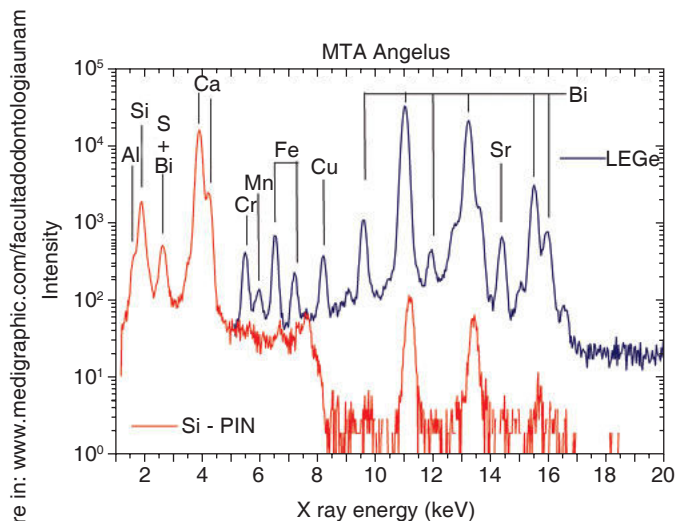


Figure 1. PIXE spectrum of MTA Angelus®. Light elements (low atomic number) are shown in red, heavy elements (high atomic number) are shown in blue.

Table I. PIXE results (wt%).

Chemical element	MTA Angelus®	WPC
Al	2.73	2.88
Si	8.17	10.11
P	0.48	0.65
S	0.01	1.50
K	0.37	0.50
Ca	26.20	50.21
Cr	0.35	0.01
Mn	0.05	0.01
Fe	0.15	0.18
Cu	0.02	-
Sr	0.28	-
Zr	-	0.07
Bi	5.72	-
O	55.47	33.88
Total	100	100

Table II. Relationship between silica-aluminum and silica-calcium.

	MTA Angelus®	WPC
Si/Al	3.03	2.72
Si/Ca	0.31	0.2

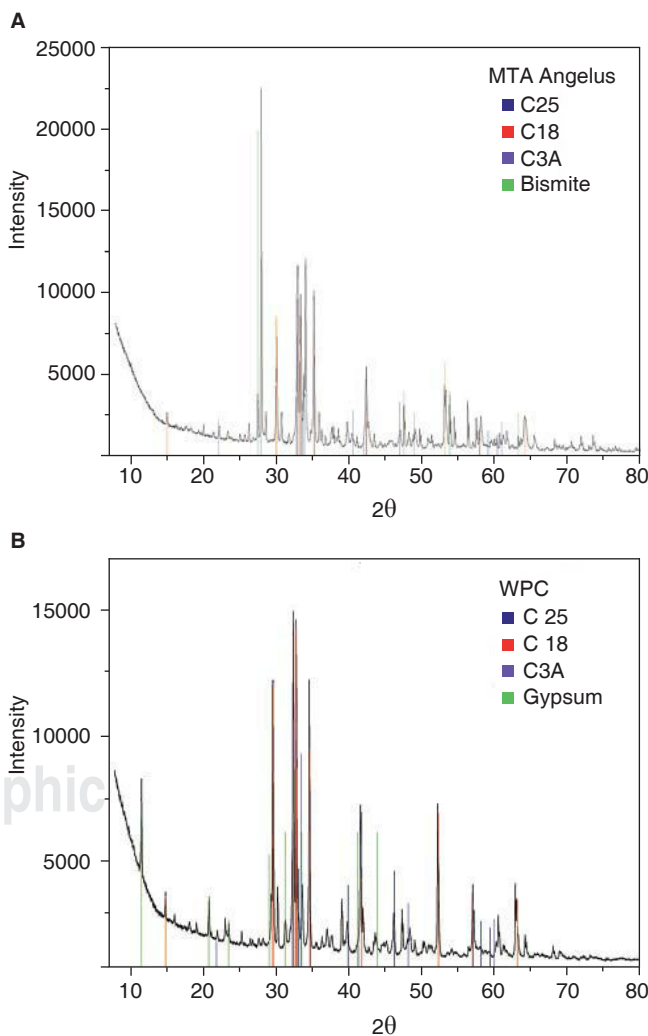


Figure 2. X-ray diffraction analysis (XRD) **A)** MTA Angelus® and **B)** Portland cement.

Color picture in: www.medigraphic.com/facultadodontologiaunam

Color picture in: www.medigraphic.com/facultadodontologiaunam

Table III. Absorption coefficient of components identified in studied cements.

Chemical formula	Chemical name	Crystalline	ICDD	Absorption phase coefficient μ (cm ⁻¹)
Bi ₂ O ₃	Bismuth trioxide	Bismite	41-1449	2061
Ca ₂ SiO ₄	Dicalcium silicate	Larnite	70-0388	277
Ca ₃ SiO ₅	Tricalcium silicate	Hatrurite	86-0402	295
Ca ₃ Al ₂ O ₆	Tricalcium aluminate	-	38-1429	42
CaSO ₄ ·2H ₂ O	Dehydrated calcium sulfate	Gypsum	03-0044	149

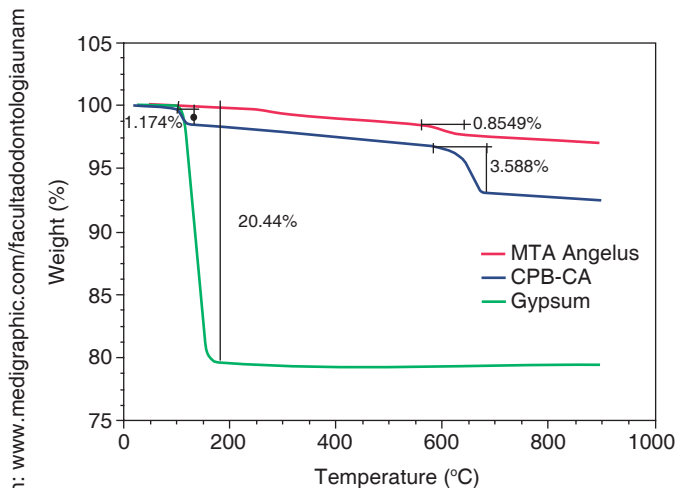


Figure 3. Results of thermogravimetry (TGA). Green line represents weight loss associated to water in gypsum, a 1.17WT% water loss associated to WPC-CA was observed, MTA Angelus® did not exhibit this behavior.

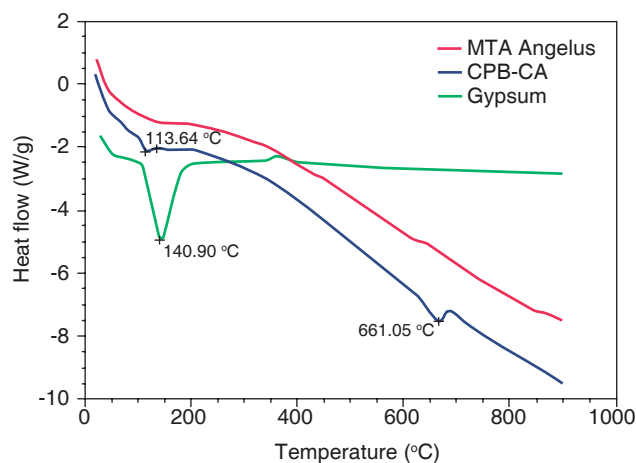


Figure 4. Results of differential scanning calorimetry (DSC). The green line shows changes in heat flow associated to gypsum’s superficial water, it is minimally observed in WPC-CA (blue) nevertheless, this change is not observed in MTA Angelus® (red).

therefore it was concluded it did not contain calcium sulfate (Figure 4).

DISCUSSION

Within the realm of analyses performed with EDS, Oliveira⁹ found that, when comparing ProRoot MTA, MTA Angelus® and a Portland cement, chemical elements were very similar, with minimal variations, with exception of Bismuth which was only detected in MTA. This behavior was equally observed in our study. It must be remembered that Bismuth is only aggregated with the aim of manufacturing a radio-opaque material which can be clinically detected in the practice of dentistry. In a similar manner, and following this technique, Asgary¹² conducted a comparison of components amongst different types of MTA and Portland cements. In that study it was observed that trace element concentrations were very varied with respect to amounts of Al₂O₃, MgO and FeO. Use of nuclear techniques for analyses of materials such as PIXE allows the rapid identification of low concentration elements, thus presence of Chrome,

Manganese, Strontium, Copper and Zirconium was detected, with precise quantification in all of them. In the case of MTA Angelus, when using PIXE it was difficult to identify presence of Sulfur, this is due to the fact that sulfur’s X-rays K α peaks (2.3 keV) overlap to Bismuth’s M α (2.4keV) peaks.

Camilleri¹³ and García Aranda²¹ analyzed Portland cements for a probable dental use; results of that research revealed that in all cements, the main elements are Calcium, Silica and Aluminum, with some traces of magnesium, potassium and sodium. Meanwhile, García Aranda²¹ and Rodríguez,²² when studying MTA cements, detected trace elements such as phosphorus, chrome, chlorine and iron, even though the cements were white. These results concur with results of the present study, since, when using PIXE as technique for element analysis, the following elements were detected: chrome, zirconia, iron, and manganese in WPC and MTA Angelus® besides copper and strontium in this latter one. Presently, many of the materials used in dentistry have received an aggregation of ZrO₂ as filling material with the aim of improving their mechanical

Color picture in: www.medigraphic.com/facultadodontologiaunam

Color picture in: www.medigraphic.com/facultadodontologiaunam

properties, or as radio-opaque material.²⁴ This leads the way for further studies to find relationship between the presence of this element and the improvements of some properties of the cement.

Belio-Reyes and Bucio¹⁵ conducted an XRD analysis; they detected the following as main phases through a Rietveld refining technique: Bismite, Hatrurite, Larnite and Anhydrite in respective percentages of 19.8, 51.9, 23.2 and 1.3%. The three first phases were also detected in our analysis for MTA-A. Calcium sulfate phase in Portland cement was different, since gypsum was found as part of the basic composition. Following this technique, Camillieri¹³ also studied different Portland cements; he observed that main phases detected in white Portland cement were tricalcium silicate (31-0301) and dicalcium silicate (31-0299). The present study concurs with those detected mineral phases, nevertheless, they presented different crystalline structure; additionally, we observed absence of calcium sulfate in MTA Angelus®, and this must be reflected in the cement's setting time,^{23,24} since it is known that presence of gypsum in cements avoids the reaction known as «flash set» or «rapid setting». XRD is an excellent technique to identify mineral phases in poly-crystalline ceramic materials. In an ideal situation, this study would be supplemented with a quantification of found phases performed with the Rietveld method.

CONCLUSION

With the methodology used in the present study it can be concluded that both materials possessed similar chemical composition; Calcium, Silica and Aluminum were the elements found in higher percentage. Detected Iron amounts were very low, since both materials were white cements; ferrite phase was not present as would be the case in grey cements. Differing from WPA, very low amounts of Sulfur were detected in MTA Angelus®.

By means of XRD it was observed that the most noticeable differences were absence of calcium sulfate in MTA Angelus® as well as bismite phase in WP. Mineral phases present in both cements were dicalcium silicate, tricalcium silicate and tricalcium aluminate.

REFERENCES

- Torabinejad M. Physical and chemical properties of a new root-end filling material. *J Endod.* 1995; 21 (7): 349-353.
- Wiltbank KB. Effect of selected accelerant on the physical properties of mineral trioxide aggregate and Portland cement. *J Endod.* 2007; 33 (10): 1235-1238.
- Camillieri J. Evaluation of selected properties of mineral trioxide aggregate sealer cement. *J Endod.* 2009; 35 (10): 1412-1417.
- Ford TR, Torabinejad M. Use of mineral trioxide aggregate for repair furcal perforation. *O Surg, Oral Med Oral Pathol Oral Radiol Endod.* 1995; 79 (6): 756-763.
- Moretti AB, Oliveira TM. Mineral trioxide aggregate pulpotomy of a primary second molar in patient with agenesis of the permanent successor. *Int Endod J.* 2007; 40 (9): 738-745.
- Yasuda Y, Ogawa M. The effect of mineral trioxide aggregate on the mineralization ability of rat dental pulp cells: an *in vitro* study. *J Endod.* 2008; 34 (9): 1057-1060.
- Torabinejad M, White DJ. Tooth filling material and use, United States Patent & Trademark Office; Patent 1995; 5: 769-638.
- Camillieri J, Montesin FE. Characterization of Portland cement for use in dental restorative material. *Dent Mater.* 2006; 22 (6): 569-575.
- Oliveira MG, Xavier CB. Comparative chemical study of MTA and Portland cements. *Braz Dent J.* 2007; 18 (1): 3-7.
- Camillieri J, Montesin FE, Di Silvio L, Pitt Ford TR. The Chemical constitution and biocompatibility of accelerated Portland cement for endodontic use. *Int Endod J.* 2005; 38 (11): 834-842.
- Hwang YC, Lee SH. Chemical composition, radiopacity and biocompatibility of Portland cement with bismuth oxide. *Oral Surg Oral Med Oral Pathol Oral Radiol Endod.* 2007; 107 (3): e96-e102.
- Asgary S, Eghbal MJ. Comparison of mineral trioxide aggregate's composition with Portland cement and a new endodontic cement. *J Endod.* 2009; 35 (2): 243-250.
- Camillieri J. Characterization and chemical activity of Portland cement and two experimental cements with potential for use in dentistry. *Int Endod J.* 2008; 41 (9): 791-799.
- Herrington C. Quantitative EDS and WDS X-ray microanalysis of semiconductors materials: principles and comparison. *J Electron Micro Tec.* 1985; 2 (5): 471-479.
- Belio-Reyes I, Bucio G. Phase composition of ProRoot mineral trioxide aggregate by X-ray powder diffraction. *J Endod.* 2009; 35 (6): 875-878.
- Govil IM. Proton Induced X-ray Emission: A tool for non-destructive trace element analysis. *Current Science.* 2001; 80: 1542-1549.
- Pecharsky VK, Zavalij PY. Fundamentals of powder diffraction and structural characterization of materials, 2nd Ed., Springer, 2003.
- Camillieri J. Hydration mechanisms of mineral trioxide aggregate. *Int Endod J.* 2007; 40: 462-470.
- Islam I, Chng HK. X-ray diffraction analysis of mineral trioxide aggregate and Portland cement. *Int Endod J.* 2006; 39 (3): 220-225.
- Powder Diffraction File. Newtown Square, PA: International Centre for Diffraction Data (ICDD); 2007.
- García ARL, García GM. Similarities of elemental chemistry and morphology of cements type mineral trioxide aggregate and Portland Cements through the use of scanning electronic microscopy and electron dispersion spectroscopy. *Rev Odon Mex.* 2014; 18 (2): 105-110.
- Rodríguez RAC, Hernandez PG, Garcia GM, Garcia ARL. Physicochemical analysis of MTA Angelus® and Biodentine® conducted with X RAY diffraction, dispersive Energy spectrometry, X Ray fluorescence, scanning electron microscope and infra red spectroscopy. *Rev Odon Mex.* 2015; 19 (3): 174-180.
- Tzouvalas G, Dermatas N, Tsimas S. Alternative calcium sulfate-bearing materials as cements retarders. Part I. Anhydrite. *Cement and Concrete Research.* 2004; 34: 2113-2118.
- Tzouvalas G, Dermatas N, Tsimas S. Alternative calcium sulfate-bearing materials as cements retarders. Part II. FGD Gypsum. *Cement and Concrete Research.* 2004; 34: 2119-2125.

Mailing address:
Abigail Flores Ledesma
 E-mail: dra_abyfl@hotmail.com