



## Anatomy

# Vessel element and fiber length variation in successive cambia of *Iresine latifolia* (Amaranthaceae)

## *Variación de la longitud de los elementos de vaso y las fibras en los cámbiums sucesivos de Iresine latifolia (Amaranthaceae)*

Silvia Zumaya-Mendoza\*, Teresa Terrazas

Departamento de Botánica, Instituto de Biología, Universidad Autónoma de México, Apartado Postal 70-153, 04510 Ciudad de México, Mexico

Received 8 January 2016; accepted 27 August 2016

Available online 19 November 2016

### Abstract

The size of the axial cell elements of wood, vessel elements and fibers, increases or decreases from pith to stem periphery in the species that have been studied with successive cambium such as members of the Menispermaceae. *Iresine latifolia* (Amaranthaceae) was selected for this study because it is a scandent shrub widely distributed in Mexico with successive cambia. The objectives were to quantify vessel element and fiber lengths in each of the vascular rings, to evaluate whether cellular size increases or decreases from pith to periphery, and to describe its wood. Macerations were performed for each of the secondary xylem rings present in 3 individual samples, and permanent slides were prepared using conventional procedures for wood. Observations showed that *I. latifolia* has 13–36 concentric rings, each ring showing an active cambium. Like other species of Amaranthaceae, there are nucleated fibers and multiseriate rays with a meristematic center. Variance analyses showed significant differences between vessel element and fiber lengths between only some of the vascular rings from pith to periphery. These results suggest that the parenchyma cells, from which the new cambium is derived, reach the size of the fusiform initial cells early in the differentiation process.

© 2016 Universidad Nacional Autónoma de México, Instituto de Biología. This is an open access article under the CC BY-NC-ND license (<http://creativecommons.org/licenses/by-nc-nd/4.0/>).

**Keywords:** Caryophyllales; Shrub; Secondary xylem; Cambial variant; Meristematic center; Nucleated libriform fibers

### Resumen

El tamaño de los elementos celulares axiales de la madera, elementos de vaso y fibras, se incrementa o decrece de la médula a la periferia del tallo en las especies estudiadas con cámbium sucesivo como en miembros de Menispermaceae. Se seleccionó a *Iresine latifolia* (Amaranthaceae) por ser un arbusto escandente ampliamente distribuido en México que presenta cámbiums sucesivos. Los objetivos fueron cuantificar la longitud de los elementos de vaso y fibras en cada uno de los anillos vasculares, evaluar si la talla celular aumenta o disminuye de médula a la periferia y describir su madera. Se realizaron disociados de cada uno de los anillos de xilema secundario presentes en 3 individuos y se hicieron preparaciones permanentes a través de la microtecnia convencional. Las observaciones mostraron que *I. latifolia* tiene entre 13 y 36 anillos concéntricos. Todos los anillos muestran cámbium activo y como en otras especies de Amaranthaceae hay fibras nucleadas y radios multiseriados con un centro meristemático. Un análisis de varianza mostró diferencias significativas para la longitud de los elementos de vaso y la fibra solo entre algunos anillos vasculares de la médula a la periferia, por lo que se sugiere que las células de parénquima de donde se deriva el nuevo cámbium alcanzan pronto la talla de la célula fusiforme inicial en el proceso de diferenciación.

© 2016 Universidad Nacional Autónoma de México, Instituto de Biología. Este es un artículo Open Access bajo la licencia CC BY-NC-ND (<http://creativecommons.org/licenses/by-nc-nd/4.0/>).

**Palabras clave:** Caryophyllales; Arbusto; Xilema secundario; Variante cambial; Centro meristemático; Fibras libriformes nucleadas

\* Corresponding author.

E-mail address: [szumaya@st.ib.unam.mx](mailto:szumaya@st.ib.unam.mx) (S. Zumaya-Mendoza).

Peer Review under the responsibility of Universidad Nacional Autónoma de México.

<http://dx.doi.org/10.1016/j.rmb.2016.10.006>

1870-3453/© 2016 Universidad Nacional Autónoma de México, Instituto de Biología. This is an open access article under the CC BY-NC-ND license (<http://creativecommons.org/licenses/by-nc-nd/4.0/>).

## Introduction

Successive cambium is a cambial variant that involves the development of more than one cambium, resulting in 2 or more vascular rings of secondary xylem and phloem. Successive cambia have been reported in 34 vascular plant families, predominantly in the order Caryophyllales (Robert et al., 2011). In the Amaranthaceae, which belongs to this order, successive cambia have been described in both the stem and root, and in both organs, they form concentric vascular rings, either complete or incomplete (Carlquist, 2003, 2007; Joshi, 1937; Rajput, 2002).

Tamaio, Neves, Brandes, and Vieira (2011) showed that multiple cambia generate several vascular rings that differ between species with successive cambium from those with composite vascular rings. According to these authors, when composite vascular rings are present, all cambia remain active and have a determined number. This is why species with composite vascular cambia show little difference in the dimensions of the tracheary elements and fibers (axial cell elements) that constitute their secondary xylem. However, when successive cambia are present, the internal cambia (closer to the pith) cease their activity, while those closer to the stem periphery remain active. When not all of the successive cambia remain active, the dimensions of axial system cells vary significantly. For example, from pith to periphery, they tend to decrease in size in *Stegnosperma* Benth. (Phytolaccaceae; Horak, 1981), they can be of equal size to slightly longer in *Cycas* L. (Cycadaceae; Terrazas, 1991) and they tend to increase in size in *Phytolacca dioica* L. (Phytolaccaceae; Wheat, 1977), *Abuta grandifolia* (Mart.) Sandwith (Menispermaceae; Tamaio & Brandes, 2010) and *Cocculus hirsutus* (L.) Diels (Menispermaceae; Rajput & Rao, 2003). It has been hypothesized that in species with successive cambia, tracheary elements and fiber lengths are longer in the most internal ring, which comes from the fusiform initials of vascular cambium, while the tracheary elements and fibers that originate from parenchyma cells would be shorter. The alternative hypothesis is that the tracheary element and fiber lengths increase from pith to the stem periphery, as has been described for other plants with only one vascular ring (Panshin & de Zeeuw, 1980).

*Iresine latifolia* (M.Martens & Galeotti) Benth. & Hook.f. was selected as a scandent shrub of the Amaranthaceae and one of the species of *Iresine* P. Browne that is widely distributed in Mexico, ranging from tropical deciduous forest up to the cloud

forest. It is assumed that this species, like other Amaranthaceae, has successive cambia. If all successive cambia are active in *I. latifolia*, it is expected that the lengths of tracheary elements and fibers will increase from the inner vascular ring toward the stem periphery. The aims of this study were to describe the wood of *I. latifolia* and to evaluate the lengths of tracheary elements and fibers in the different vascular rings.

## Materials and methods

Three samples of *I. latifolia* were collected (Table 1); samples, each 10 cm long, were cut with a saw at 5 cm above the ground. The samples were fixed in formalin–acetic acid–ethanol (Ruzin, 1999) for 3 days and stored in glycerine–95% ethanol–water (1:1:1) solution until further processing. Two cylinders, each 2 cm long, were taken from each sample. The first of these stem cylinders was used to obtain transverse, radial and serial tangential sections (20–35  $\mu\text{m}$ ) using a sliding microtome. These sections were stained with safranin-fast green (Ruzin, 1999) and mounted in synthetic resin.

We added hydrochloric acid and phloroglucinol (Ruzin, 1999) to the transverse plane of the second stem cylinder to highlight the lignified tissue. Once the surface acquired a reddish color, we counted the number of secondary xylem rings and measured their width with the help of an American Optical 570 stereoscopic microscope. Next, secondary xylem was separated from each of the vascular rings using a disposable microtome knife. Each of the secondary xylem rings was macerated using Jeffrey's solution (Berlyn & Miksche, 1976) at 56 °C for 20–90 min to gather vessel element and fiber lengths; no tracheids were seen. Macerations were washed with tap water, and temporary slides were prepared for measurements of 50 fibers and 100 vessel elements for each vascular ring using Image-Pro Plus version 6.01 (Media Cybernetics) adapted for an Olympus BX-51 optical microscope. Variance analyses were performed using the general linear model (SAS, 2008) to evaluate whether there are significant differences between the rings within each sample.

## Results

The wood of *I. latifolia* has a variable number of concentric vascular rings with conspicuous secondary xylem and phloem bands (Fig. 1A). The wood has growth rings abruptly delimited

Table 1  
*Iresine latifolia* samples collected.

Individual	Height (m)	Diameter (cm)	Locality, state	Elevation (m a.s.l.)	Vegetation	Collector
1	2.0	4.6	Parque ecoturístico Los Trocones, Cañón de la Libertad, Ciudad Victoria, Tamaulipas.	338	Scrub	Zumaya-Mendoza & Mora-Olivo 96
2	1.50	1.6	Arroyo el León, Sierra Las Cacachilas, La Paz, Baja California Sur.	496	Tropical deciduous forest	Zumaya-Mendoza, León de la Luz & Domínguez 130
3	4.0	2.3	Cañada El Muñiz, San Fernando, Chiapas.	874	Tropical subdeciduous forest	Samain et al., 2014-009



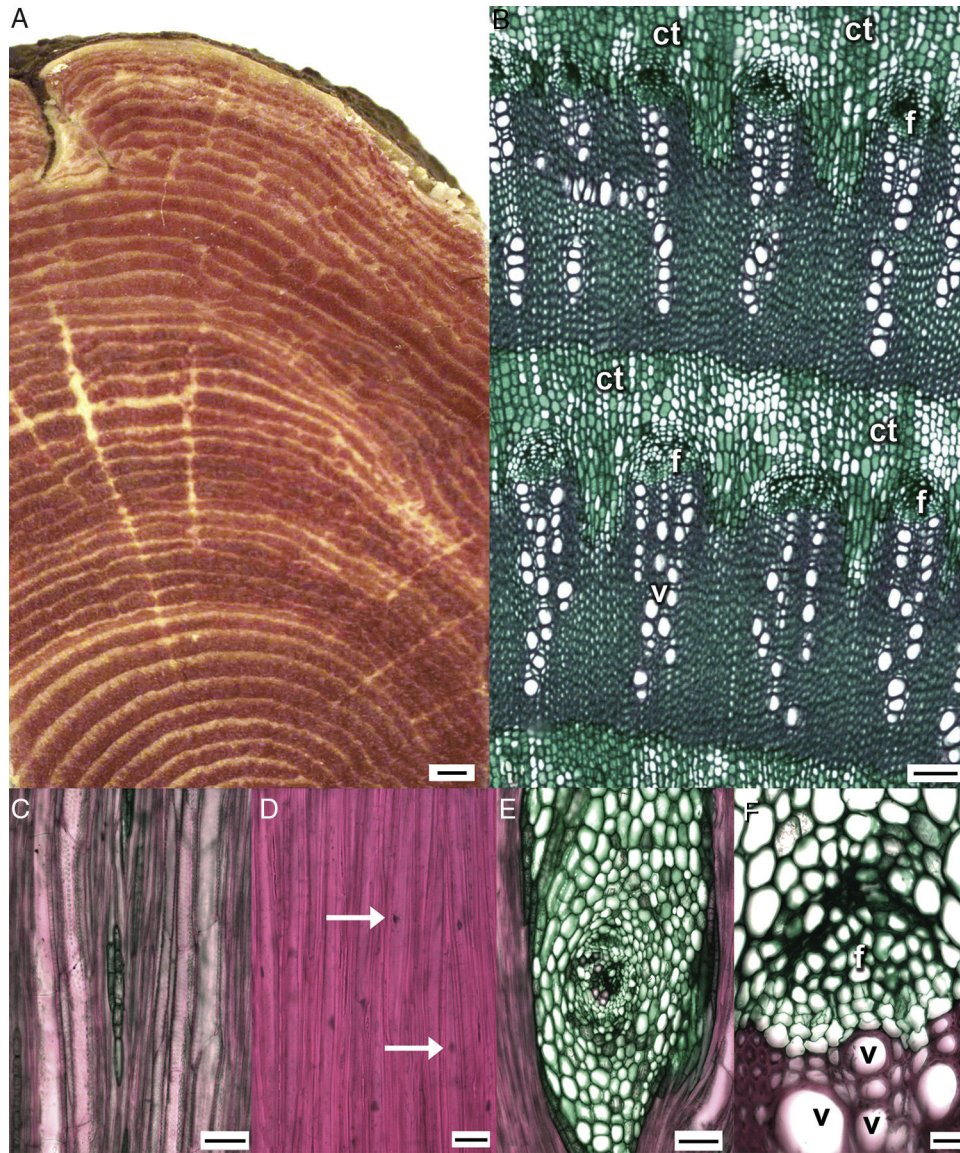


Figure 1. Wood of *Iresine latifolia* with successive cambium. Transverse (A, B, F) and tangential (C–E) sections. A, Stem showing successive cambium with abundant vascular rings; B, detail of vascular rings, showing the vessels in radial multiples, phloem, and conjunctive unligified tissue; C, uniseriate ray and vessel elements with simple perforation plates and intervacular alternate bordered pits; D, nucleated libriform fibers; E, multiseriate unligified ray with meristematic center; F, cambial zone with 2–3 layered cambial cells. Bars are 1 mm in (A), 100  $\mu\text{m}$  in (B), 50  $\mu\text{m}$  in (C, E), and 20  $\mu\text{m}$  in (D, F). ct: conjunctive tissue; f: fiber; v: vessel; arrows: nuclei.

by vessel and fiber wall thickness. Porosity is diffuse. The vessels are in radial multiples of 2, with 16–22 vessels, sometimes 2–3 parallel radial multiples in each vascular fascicle, and occasional vessels are solitary (Fig. 1B); vessels are rounded in outline and occluded by gums, especially in the rings closer to the pith. Vessel diameter ranges from 23 to 78  $\mu\text{m}$  with a mean of 44  $\mu\text{m}$  and a wall thickness of 3  $\mu\text{m}$ . The vessel elements are morphologically heterogeneous (Fig. 2), varying in length from 120 to 309  $\mu\text{m}$ , and they have simple perforation plates from slightly inclined to almost horizontal end walls, with alternate intervacular pits (Fig. 1C) and pit diameter varies from 3.3 to 4.3  $\mu\text{m}$ . The libriform fibers are nucleated and have simple pits, with no helical thickenings or septa (Fig. 1D, 2). Mean fiber length varies from 249 to 571  $\mu\text{m}$ , diameter from 10.9 to 32.3  $\mu\text{m}$  and wall thickness from 2.8 to 3.3  $\mu\text{m}$ . The parenchyma is scanty and

vasicentric. Additionally, it forms concentric unligified bands (conjunctive tissue) of more than 3 cells wide and alternating with bands of secondary xylem. Rays are heterocellular, uni- and multiseriate, 4–10 cells wide, with short procumbent, erect and square cells. In the multiseriate rays, there is a center with meristematic activity, where xylem and phloem are differentiated (Fig. 1E).

Additionally, the vascular cambium of each ring is distinctively active and differentiates new derivatives (Fig. 1F). The secondary phloem is composed of 2 regions: the first is a functional region of parenchyma cells and angular sieve tube elements with simple sieve plates and nucleated companion cells (Fig. 1F); the other is a non-functional region that forms a casket over the functional phloem, and only certain parenchyma cells expand between the obliterated sieve tube elements. Prismatic

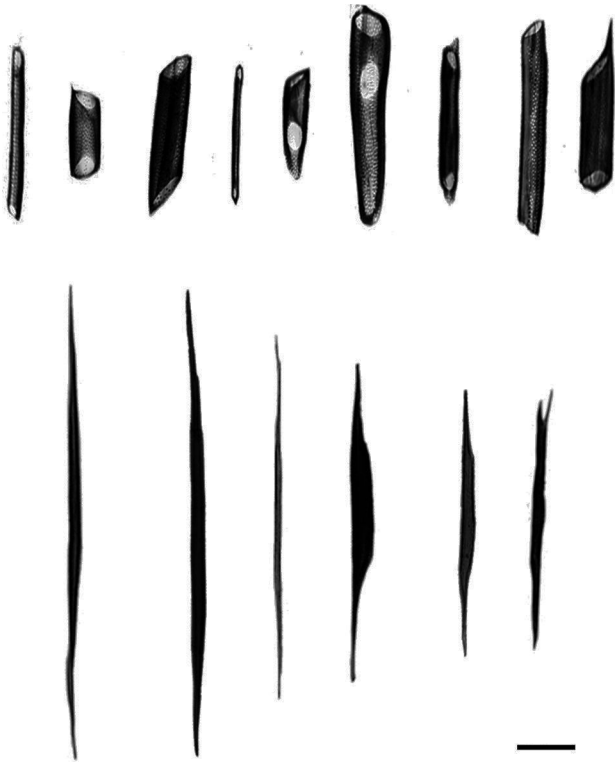


Figure 2. Diversity in morphology and sizes of vessel elements and fibers of *Iresine latifolia* wood. Bar is 100  $\mu\text{m}$ .

crystals were observed in ray cells, and sandy and prismatic crystals are present in the pith and the parenchyma cells (conjunctive tissue) between the vascular rings.

#### Vascular rings

The number of concentric secondary xylem rings is highly variable between samples, and the larger the stem diameter, the higher the number of secondary xylem rings (Fig. 3A), except for sample 3, which had fewer rings. In the 3 samples, the first 8 secondary xylem rings have a width of at least 1 mm. However, in sample 1, secondary xylem rings of 1 mm in width are present between the intermediate secondary xylem rings (Fig. 3A). The secondary xylem rings closer to the stem periphery were the narrower ones (<0.4 mm), and the separation between them is minimal, joining a vascular ring to another through parenchyma cells, which anastomose.

#### Vessel element length

The length was almost constant in 2 samples, with no apparent differences between most of the secondary xylem rings ( $p > 0.05$ , Tukey), and differences between most secondary xylem rings were found only in sample 1, in which the length increased from pith to periphery (Fig. 3B–D).

#### Fiber length

The fibers are almost twice the length of vessel elements, due to intrusive growth. In samples 1 and 2, the length increases from pith toward periphery, and some significant differences were found between some rings ( $p < 0.05$ , Tukey), but in sample 3, the fibers decrease in length in the vascular ring closer to the periphery, and there are almost no differences between secondary xylem rings (Fig. 3D).

#### Discussion

##### Variation in the width of the vascular ring and the length of its axial cells

Variance analyses confirmed significant differences in the length of vessel elements and fibers only for some of the secondary xylem rings from pith to periphery for each of the *I. latifolia* samples studied. For vessel elements, there are no major differences between the first ring, which was formed from vascular cambium, and those that are closer to the periphery, which come from parenchyma cells that would correspond to rings 13 or 14. This lack of size difference between the first and last vascular rings formed in 2 of the samples (Fig. 3) suggests that the parenchyma cells from which the new cambium is differentiated reach the initial fusiform size early in the differentiation process due to their short length (<309  $\mu\text{m}$ ). In sample 1, there was always an increase in vessel element length from pith to periphery, confirming that when the environment is favorable to the plant growth, more wood is accumulated and larger cell sizes are therefore achieved, as is the case in other plant groups (Panshin & de Zeeuw, 1980). Moreover, the results in vessel element lengths support the assertion of Robert et al. (2011), who noted that the successive cambia are interlinked and remain active, which is why they reach the initial fusiform cell sizes.

In fibers, there were significant differences between those differentiated from vascular cambium and those derived from successive cambia, with no clear pattern. For example, in sample 1, their length increased, but in samples 2 and 3, fiber lengths decreased. In the 3 samples, the fibers became twice the length of vessel elements as a result of intrusive growth, similar to reports for *C. hirsutus* (Rajput & Rao, 2003), which also has successive cambia.

The variation in vessel element and fiber lengths in the 3 samples of *I. latifolia* is more diverse than reported for other species with successive cambia. Only in one of the samples studied was there an increase in the length of both types of cells from pith to periphery, as has been observed in several species of Cycadaceae, Menispermaceae or Phytolaccaceae (Rajput & Rao, 2003; Tamaio & Brandes, 2010; Terrazas, 1991; Wheat, 1977), or else it is maintained or decreased in the other 2 samples of *I. latifolia*, as in *Stegnosperma* (Phytolaccaceae; Horak, 1981). On the other hand, no association between the width of the vascular ring and the size of the vessel elements and fibers was found in any of the 3 samples. For further comparative studies of the wood in other Amaranthaceae species, we recommend measuring the length of the vessel elements and fibers in any of

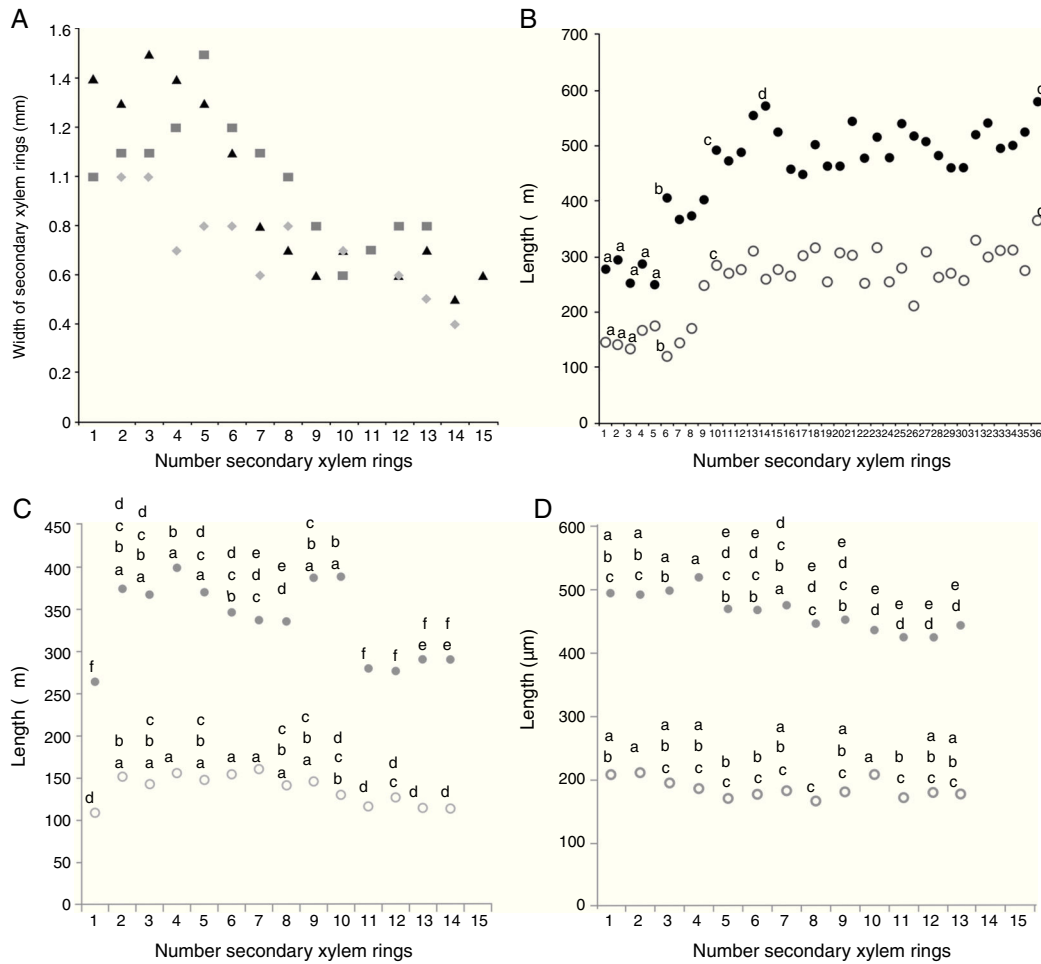


Figure 3. Widths of xylem rings and lengths of vessel elements and fibers in *Iresine latifolia*. A, Widths of xylem rings in sample 1 (triangles), sample 2 (diamonds), and sample 3 (squares); B–D, lengths of vessel elements (open circles) and fibers (close circles) from pith to periphery. B, Sample 1; C, sample 2; D, sample 3. Each point represents the mean of 50 measurements for fibers and 100 for vessel elements. Different letters indicate statistically significant differences.

the 2 most external vascular rings, especially when the complete stem cylinder is not available.

Concentric successive cambia may develop complete vascular rings, discontinuous rings or an anastomosing network. The presence of anastomosis between the most external vascular rings has been observed in other Amaranthaceae species and appears to be a common trait (Rajput & Marcati, 2013) in species with successive cambia (Robert et al., 2011).

#### The wood

It is confirmed that *I. latifolia* has concentric successive cambia (secondary xylem bands alternating with secondary phloem bands) as observed in other Amaranthaceae species, as well as diffuse porosity, vessels in radial multiples, vessel elements with simple perforation plates, alternate intervacular pits, scanty-vasicentric parenchyma and nucleated libriform fibers (Carlquist, 2003; Rajput & Marcati, 2013; Rajput & Rao, 2000). This *Iresine* species has uniseriate rays with erect, square and short procumbent cells but also multiseriate rays with a meristematic center similar to the multiseriate rays reported for *Hebanthe eriantha* (Poir.) Pedersen (Amaranthaceae; Rajput

& Marcati, 2013) and *Suaeda monoica* Forssk. ex J.F.Gmel (Chenopodiaceae; Lev-Yadun & Aloni, 1991). Other *Iresine* species should be examined to ascertain whether multiseriate rays with a meristematic center are characteristic of the genus or unique to *I. latifolia*, or whether they are associated with the shrub or scandent habit.

We conclude that *I. latifolia* wood is similar to that of other Amaranthaceae, with stem growth occurring due to successive cambia. Vessel element and fiber lengths increase from pith to periphery in *I. latifolia* with successive cambia as in other species with a single vascular ring, when growth conditions are favorable. Thus, cell size in species with numerous successive cambia reaches the optimal size of the fusiform initial to perform the proper water movement (vessel elements) and contribute to efficient support (fibers).

#### Acknowledgements

This study is part of the requirements for Silvia Zumaya-Mendoza to obtain the Doctor of Science degree from the Posgrado en Ciencias Biológicas (PCB) de la Universidad Nacional Autónoma de México. Silvia Zumaya-Mendoza



thanks PCB for facilities and CONACYT for a scholarship (164721). We thank Arturo Mora-Olivo, José Luis León de la Luz, Reymundo Domínguez, Mauricio Mora-Jarvio and Marie Samain for their invaluable help and support in the field. Art work by Diana Martínez and Julio César Montero is also appreciated.

## References

- Berlyn, G. P., & Miksche, J. P. (1976). *Botanical microtechnique and cytochemistry*. Ames, Iowa: The Iowa State University Press.
- Carlquist, S. (2003). Wood and stem anatomy of Amaranthaceae s.s.: ecology, systematics and the problems of defining rays in dicotyledons. *Botanical Journal of the Linnean Society*, 143, 1–19.
- Carlquist, S. (2007). Successive cambia revisited: ontogeny, histology, diversity, and functional significance. *Journal of the Torrey Botanical Society*, 134, 301–332.
- Horak, K. E. (1981). Anomalous secondary thickening in *Stegnosperma* (Phytolaccaceae). *Bulletin of the Torrey Botanical Club*, 108, 189–197.
- Joshi, A. C. (1937). Some salient points in the evolution of the secondary vascular cylinder of Amaranthaceae and Chenopodiaceae. *American Journal of Botany*, 24, 3–9.
- Lev-Yadun, S., & Aloni, R. (1991). Polycentric vascular rays in *Suaeda monoica* and the control of ray initiation and spacing. *Trees*, 5, 22–29.
- Panshin, A. J., & de Zeeuw, C. (1980). *Textbook of wood technology, structure, identification, properties and uses of the commercial woods of the United States and Canada*. United States: McGraw-Hill Book Company.
- Rajput, K. S., & Rao, K. S. (2000). Secondary growth in the stem of some species of *Alternanthera* and *Achyranthes aspera* (Amaranthaceae). *IAWA Journal*, 21, 417–424.
- Rajput, K. S. (2002). Stem anatomy of Amaranthaceae: rayless nature of xylem. *Flora*, 197, 224–232.
- Rajput, K. S., & Rao, K. S. (2003). Cambial variant and xylem structure in the stem of *Cocculus hirsutus* (Menispermaceae). *IAWA Journal*, 24, 411–420.
- Rajput, K. S., & Marcati, C. R. (2013). Stem anatomy and development of successive cambia in *Hebanthe eriantha* (Poir.) Pedersen: a neotropical climbing species of the Amaranthaceae. *Plant Systematic and Evolution*, 299, 1449–1459.
- Robert, E. M. R., Schmitz, N., Boeren, I., Driessens, T., Herremans, K., De Mey, J., et al. (2011). Successive cambia: a developmental oddity or an adaptive structure? *PLoS ONE*, 6, e16558.
- Ruzin, S. E. (1999). *Plant microtechnique and microscopy*. New York: Oxford University Press.
- SAS (Statistical Analysis System). (2008). *SAS/STAT software 9.2 Ed*. Cary, NC: SAS Institute Inc.
- Tamaio, N., & Brandes, A. F. N. (2010). Xylem structure of successive rings in the stem of *Abuta grandiflora* (Menispermaceae): a statistical approach. *IAWA Journal*, 31, 309–316.
- Tamaio, N., Neves, M. F., Brandes, A. F. N., & Viera, R. C. (2011). Quantitative analyses establish the central vascular cylinder as the standard for wood-anatomy studies in lianas having compound stems (Paullinieae: Sapindaceae). *Flora*, 206, 987–996.
- Terrazas, T. (1991). Origin and activity of successive cambia in *Cycas* (Cycadales). *American Journal of Botany*, 78, 1335–1344.
- Wheat, D. (1977). Successive cambia in the stem of *Phytolacca dioica*. *American Journal of Botany*, 64, 1209–1217.