



## Ecology

# Coprological survey of parasites of free-ranging jaguar (*Panthera onca*) and puma (*Puma concolor*) inhabiting 2 types of tropical forests in Mexico

## *Estudio coprológico de parásitos de jaguar (Panthera onca) y puma (Puma concolor) en 2 tipos de bosque tropical en México*

Brenda Solórzano-García<sup>a,\*</sup>, Jennifer Mae White-Day<sup>b</sup>, Magaly Gómez-Contreras<sup>a</sup>,  
Jurgi Cristóbal-Azkárate<sup>c</sup>, David Osorio-Sarabia<sup>d</sup>, Ernesto Rodríguez-Luna<sup>a</sup>

<sup>a</sup> Centro de Investigaciones Tropicales, Ex Hacienda Lucas Martín, Privada de Araucarias s/n, Col. Periodistas, 91019 Xalapa, Veracruz, Mexico

<sup>b</sup> Department of Biology, University of Washington, Box 351800, Seattle, WA 98195-1800, USA

<sup>c</sup> Division of Biological Anthropology, University of Cambridge, Pembroke Street, Cambridge CB2 3QG, United Kingdom

<sup>d</sup> Departamento de Zoología, Instituto de Biología, Universidad Nacional Autónoma de México, Apartado postal 70-153, 04510 Ciudad de México, Mexico

Received 9 April 2016; accepted 22 September 2016

Available online 21 February 2017

### Abstract

This study presents a coproparasitological survey of free-ranging jaguars (*Panthera onca*) and pumas (*Puma concolor*) inhabiting 2 types of tropical forest in southeastern Mexico. We examined 167 fecal samples (68 = jaguar; 33 = puma; 66 = unidentified large felids), and identified 16 parasitic taxa, 56% of which were nematodes. We compared parasite community composition and prevalence between host species and forest types, and found that parasitic communities of jaguar and puma were more similar between host species in the same forest type than among conspecific hosts inhabiting different forest types. Possible determinants for the observed patterns could include ecosystem differences and host evolutionary history, as well as disparate diet and habitat use of these 2 felines. Further studies are needed for a more accurate estimation of the parasitic community composition of these felines, and for a better comprehension of the effects that habitat perturbation could have on the ecology and transmission of parasitic diseases, and the related consequences for the conservation of wild felines.

© 2017 Universidad Nacional Autónoma de México, Instituto de Biología. This is an open access article under the CC BY-NC-ND license (<http://creativecommons.org/licenses/by-nc-nd/4.0/>).

**Keywords:** Wild felines; Gastrointestinal parasites; Parasitic community; Forest type

### Resumen

Este trabajo presenta un análisis coproparasitológico de jaguares (*Panthera onca*) y pumas (*Puma concolor*) que habitan 2 tipos de bosque tropical en México. Examinamos 167 excretas (68 = jaguar; 33 = puma; 66 = grandes felinos sin diferenciar) e identificamos 16 taxones de parásitos, de los cuales el 56% fueron nematodos. Al comparar la composición de las comunidades parasitarias y la prevalencia entre especies de hospederos y entre tipos de bosques, encontramos que las comunidades parasitarias de jaguar y puma son más similares entre especies de hospederos que habitan el mismo bosque, que entre hospederos conespecíficos en distintos tipos de bosque. Los patrones observados pueden deberse a las características propias de cada ecosistema, junto con la historia evolutiva de los hospederos, así como a diferencias en la dieta y uso del hábitat entre ambos felinos. Son necesarios más estudios para lograr estimar de forma certera la composición de las comunidades parasitarias de estos felinos, así como para comprender mejor los efectos que la alteración del hábitat puede tener en la ecología y transmisión de enfermedades parasitarias y sus posibles implicaciones en la conservación de los felinos silvestres.

© 2017 Universidad Nacional Autónoma de México, Instituto de Biología. Este es un artículo Open Access bajo la licencia CC BY-NC-ND (<http://creativecommons.org/licenses/by-nc-nd/4.0/>).

**Palabras clave:** Felinos silvestres; Parásitos gastrointestinales; Comunidades parasitarias; Tipos de bosque

\* Corresponding author.

E-mail address: [brenda\\_solorzano@yahoo.com.mx](mailto:brenda_solorzano@yahoo.com.mx) (B. Solórzano-García).

Peer Review under the responsibility of Universidad Nacional Autónoma de México.

## Introduction

The jaguar (*Panthera onca*) and puma (*Puma concolor*) are the largest felines in the American continent. They are sympatric over much of their distribution, and inhabit a variety of ecosystems including tropical forests and savannas (Ceballos & Oliva, 2005; Nowell & Jackson, 1996). Despite the substantial information available on the biology and ecology of both felid species, little is known about their parasitism and infectious diseases in the wild (Demar, Ajzenberg, Serrurier, Dardé, & Carme, 2008; Fiorello, Robbins, Maffei, & Wade, 2006; Foster, Cunningham, Kinsella, McLaughlin, & Forrester, 2006; García-Prieto, Falcón-Ordaz, & Guzmán-Cornejo, 2012; Patton, Rabinowitz, Randolph, & Johnson, 1986; Rickard & Foreyt, 1992; Srbek-Araujo, Costa-Santos, Medeiros de Almeida, Pezzi-Guimaraes, & Garcia-Chiarelo, 2014), and the information is practically null regarding the impact that diseases and parasites have over their fitness, modes of transmission, and the ecological determinants of their parasite community structure.

Knowing which diseases and parasites potentially infect free-ranging populations across their distribution range, as well as their transmission dynamics is particularly relevant for the conservation of these felids, since the effects of parasites and diseases add up to other threats such as habitat loss, hunting, and persecution (Medellín et al., 2002; Nowell & Jackson, 1996). Additionally, as habitat fragmentation and landscape anthropogenization increases, encounters between wild felids and domestic fauna and humans became more common, and diseases and parasitism became of major concern not only for wild feline conservation but also for human health (Brousset & Aguirre, 2007; Laurenson, Mlengeya, Shiferaw, & Cleaveland, 2005; May, 1998).

Here we present the coproparasitological results of 2 intensive sampling periods of jaguar and puma free-ranging populations inhabiting 2 types of tropical forests in 2 regions of southeast Mexico. This study represents the first characterization of the parasite communities of these felines in these 2 regions of southeastern Mexico.

## Materials and methods

We conducted this study between 2008 and 2011 in 2 regions of southeastern Mexico dominated by different tropical forest types: (1) tropical rainforest (TRF) located in Uxpanapa Valley, Veracruz, and (2) semi-deciduous tropical forest (SDF) located in the northeastern portion of the Yucatán Peninsula (Fig. 1). Tropical rainforests are characterized by having exuberant and rich vegetation, with trees taller than 30 m height. Semi-deciduous tropical forests are dense ecosystems with trees up to 25 m height, and a conspicuous dry season in which many of the trees lose their leaves (Challenger & Soberón, 2008). Both study regions consist of a heterogeneous landscape of forest fragments, secondary vegetation, and anthropogenic land-cover such as agricultural land and pastures for livestock, as well as villages. Mean annual temperature and precipitation in the Uxpanapa valley are 24.4 °C and 3640 mm, and in the northeastern portion of

the Yucatán Peninsula are 25.7 °C and 1249 mm, where surface water flows are absent, and rain filters through the limestone forming a subterranean hydrologic net.

We collected scats from 38 localities in the Uxpanapa Valley (TRF), and from 19 localities in the Yucatán Peninsula (SDF). Surveys of each locality consisted of 1–2 wandering, circular, transects. We surveyed a total of 608.5 km in TRF, and 171.52 km in SDF. Surveys often followed human or game trails, but also included off-trail and road-side portions. All surveys were conducted with permission of local land owners.

Scat samples were found with the aid of wildlife scat detection dogs from the Conservation Canines program at University of Washington (Wasser et al., 2004). Each fecal sample was divided into 2 pieces, 1 piece was preserved in 4% formalin for parasitological analysis, and the other was kept frozen for genetic identification of the felid species. Given sufficient size of the sample, a portion was left in the field to minimize disruption of any territorial marking behavior.

Host species ID was confirmed using mitochondrial DNA sequencing of sloughed intestinal cells (Chaves, Graeff, Lion, Oliveira, & Eizirik, 2011). The ATP6 region (approximately 175 base pairs) was able to distinguish all sympatric carnivore species (data not shown). Additionally, host hair found in the scats (ingested during auto-grooming) was used to support the host species ID.

The coproparasitological examinations were conducted at the Laboratory of Animal Ecophysiology at the Center of Tropical Research, in the Universidad Veracruzana, Mexico, using flotation in saturated sodium chloride solution, and simple sedimentation techniques (Greiner & McIntosh, 2009; Hendrix, 1998). Both techniques were performed for each collected sample, examined by direct light microscopy (10×, 40×, 100×). The identification of parasites was based on egg morphology, shape, size and color.

In order to characterize parasite communities by host and by region, we estimated the following parameters for the 2 felid species, as well as for the 2 forest types: 1, percentage of positive samples (number of samples containing any parasite species divided by the total number of examined samples); 2, prevalence (defined by [Bush, Lafferty, Lotz, & Shostak, 1997]), and 3, parasite richness (number of parasitic taxa identified). We compared species richness between hosts and forest types using randomized (100×) sample-based rarefaction curves (Dove & Cribb, 2006) and Chao2 richness estimator calculated using EstimateS v.9.1 (Colwell, 2013). We also assessed the similarity of parasite communities between host species and between forest types by applying the Jaccard index, which considers the species richness of the communities being compared and the number of species that they have in common.

## Results

We examined a total of 167 fecal samples from free-ranging felines; 68 were confirmed as jaguar samples, 33 were confirmed as puma samples, while 66 were confirmed as large felid scats but we could not discriminate between jaguar and puma (hereinafter referred as large felid samples). The number of

Table 1  
Prevalence and richness of parasites from jaguar and puma inhabiting tropical rainforest and semi-deciduous tropical forest in southeastern Mexico. Mean egg size ( $\mu\text{m} \pm \text{s.d.}$ ) showed inside brackets below parasite's name.

Phylum	Parasite	Tropical rainforest			Semi-deciduous tropical forest			Total		
		Jaguar (%)	Puma (%)	Large felids (%)	Jaguar (%)	Puma (%)	Large felids (%)	Jaguar (%)	Puma (%)	Large felids (%)
Apicomplexa	<i>Coccidiasina</i> gen. sp. (25 ± 7.2 × 16 ± 5)			10	3.9		2.2	1.5		4.5
Platyhelminthes	<i>Anoplocephalidae</i> gen. sp. (56.8 × 50.4)	2.4						1.5		
	<i>Spirometra</i> sp. (60 ± 5.7 × 35 ± 2.3)	19			53.9	66.7	52.2	32.4	30.3	36.4
	<i>Taeniidae</i> gen. sp. (35 ± 1.9 × 29 ± 1.9)	4.8	5.6		15.4	13.3	6.5	8.8	9.1	4.5
Acanthocephala	<i>Acanthocephala</i> gen. sp. (69 ± 3.5 × 48 ± 2.3)	14.3			7.7		6.5	11.8		4.5
Nematoda	<i>Ancylostoma</i> sp. (62 ± 5.3 × 35 ± 3.8)	2.4	5.6	15	3.9	20	4.4	2.9	12.1	7.6
	Ascarid-like egg (70 ± 4.4 × 44 ± 8.8)	4.8	5.6			6.7	2.2	2.9	6.1	1.5
	<i>Capillaria</i> sp. (53 ± 7.7 × 24 ± 3.4)			5	7.7			2.9		1.5
	<i>Gnathostoma</i> sp. (77 ± 2.3 × 38 ± 4.7)						6.5			4.5
	Nematoda gen. sp. (40.5 × 22.8)		5.6						3	
	<i>Physaloptera</i> sp. (41 ± 3.2 × 28 ± 1.2)				19.2	40	17.4	7.4	18.2	12.2
	<i>Spirocercia</i> sp. (37 ± 2.5 × 16 ± 1.4)	7.1	5.6		7.7	20	13	7.4	12.1	9.1
	<i>Strongyloides</i> sp. (54 ± 7.2 × 30 ± 7.4)	9.5	11.1	15	19.2	46.7	19.6	13.2	27.3	18.2
	<i>Toxocara</i> sp. (59 ± 1.5 × 53 ± 2.4)			5	19.2	26.7	17.4	7.4	12.1	1.5
	<i>Trichuris</i> sp. (60 ± 1.8 × 28 ± 2.1)	2.4					2.2	1.5		1.5
	<i>Uncinaria</i> sp. (84 ± 7.7 × 48 ± 2)	4.8				6.7		2.9	3	
Sample size		42	18	20	26	15	46	68	33	66
Positive samples (%)		50	27.8	30	84.6	86.7	65.2	63.2	54.5	54.5
Richness		10	6		10	9		14	10	
Taxa per sample		1–4	1–2		1–4	1–6		1–4	1–6	

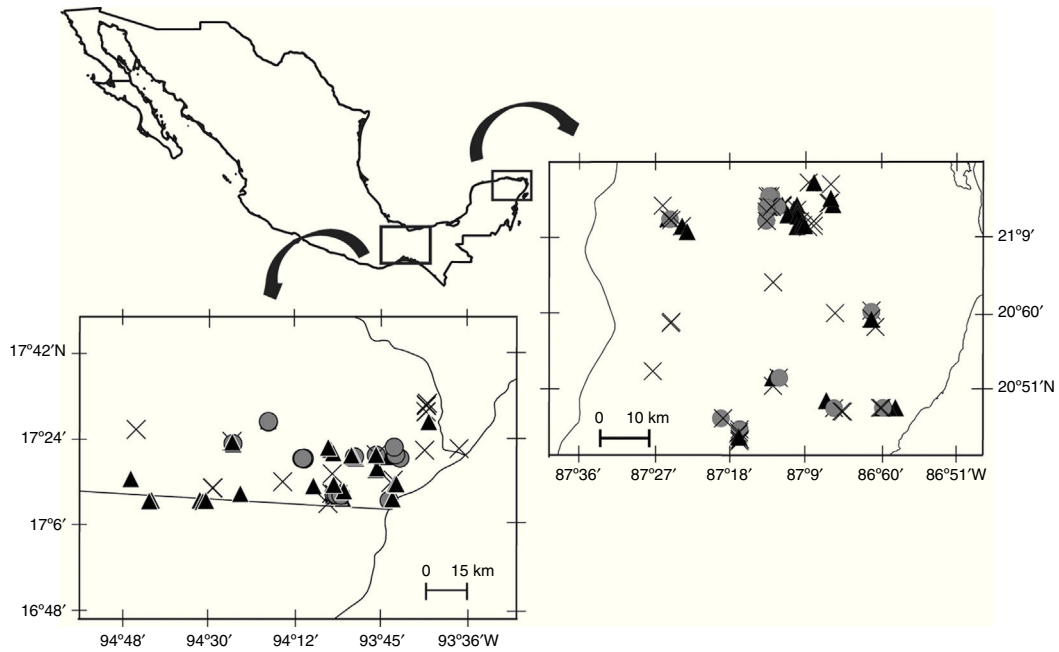


Figure 1. Study sites. 1, Uxpanapa valley (tropical rainforest); 2, northeastern Yucatán Peninsula (semi-deciduous tropical forest). Black triangles = jaguar samples, gray circles = puma samples, crosses = unidentified large felid samples.

positive samples was slightly higher in jaguar (43/68) than in puma (18/33) with over half of all samples containing at least 1 identifiable parasite (Table 1). The number of positive samples was also higher in SDF than in TRF for both felines (Table 1). We identified 16 parasite taxa for the total samples (Table 1, Fig. 2). In general, nematodes had the highest prevalence followed by platyhelminthes, acanthocephalans, and coccidians (Fig. 3). We found 4 forms of eggs of *Strongyloides* but we could not identify them to species level.

Parasitic species richness was similar in both jaguar and puma, with 14 taxa versus 10 taxa respectively; also the number of taxa per sample was relatively equal between species (Table 1). We observed the same number of parasite taxa in both forest types for jaguar, while puma presented more taxa in SDF than in TRF. Species accumulation curves and Chao2 richness estimator confirmed equal parasite species richness between forest types for jaguar, but showed higher parasitic richness in TRF compared with SDF for puma (Fig. 4). Jaccard values show that jaguar and puma share 37% of their parasitic fauna. In addition, similarity in parasitic communities between these 2 felines is higher in SDF than in TRF (Table 2). Notably, the parasitic communities are more similar within the same type of forest

between host species than within host species between forest types (Table 2).

**Discussion**

Pumas and jaguars have a rich parasitic fauna with at least 10 and 14 parasite species, respectively. Most of the parasites found in puma samples in this study coincide with previous reports (Foster et al., 2006; García-Prieto et al., 2012); however, we found a greater number of parasitic taxa than what have been published so far for free-ranging jaguar populations (Patton et al., 1986; Srбек-Araujo et al., 2014; Vieira, Luque, & Muniz-Pereira, 2008). This is the first report of *Ancylostoma* sp., *Physaloptera* sp., *Spirocerca* sp., *Strongyloides* sp., and *Uncinaria* sp. in jaguars from Mexico (see García-Prieto et al., 2012).

Also, this is the first report of an acanthocephalan for both jaguar and puma in Mexico. Acanthocephalans of the genera *Oligacanthorhynchus* and *Oncicola*, have been reported for wild felids in the Neotropics (Patton et al., 1986; Vieira et al., 2008); however the eggs that we found rather resemble that of *Echinopardalis*, also a parasite of wild felids in the American continent (Noronha, Ferreira, Rangel, Araujo, & Correa-Gomes, 1994; Schmidt, 1972).

The occurrence of anoplocephalid cestodes in the jaguar scats might be due to an accidental ingestion. These types of tapeworms have been reported in horses, but also in collared peccary and in white-lipped peccary (García-Prieto et al., 2012), both common preys of large felids in Mexico (Aranda & Sánchez-Cordero, 1996; Nuñez, Miller, & Lindzey, 2000). Since we only found 1 sample to be positive for this parasite, this is a potential case of pseudoparasitism, where a parasite was consumed along

Table 2  
Jaccard index values for assessing parasite community similarities between host species (jaguar vs. puma) and between forest types (TRF=tropical rainforest vs. SDF=semi-deciduous forest).

	Jaguar-TRF	Puma-SDF	Jaguar
Puma-TRF	0.39	0.33	–
Jaguar-SDF	0.31	0.58	–
Puma	–	–	0.37

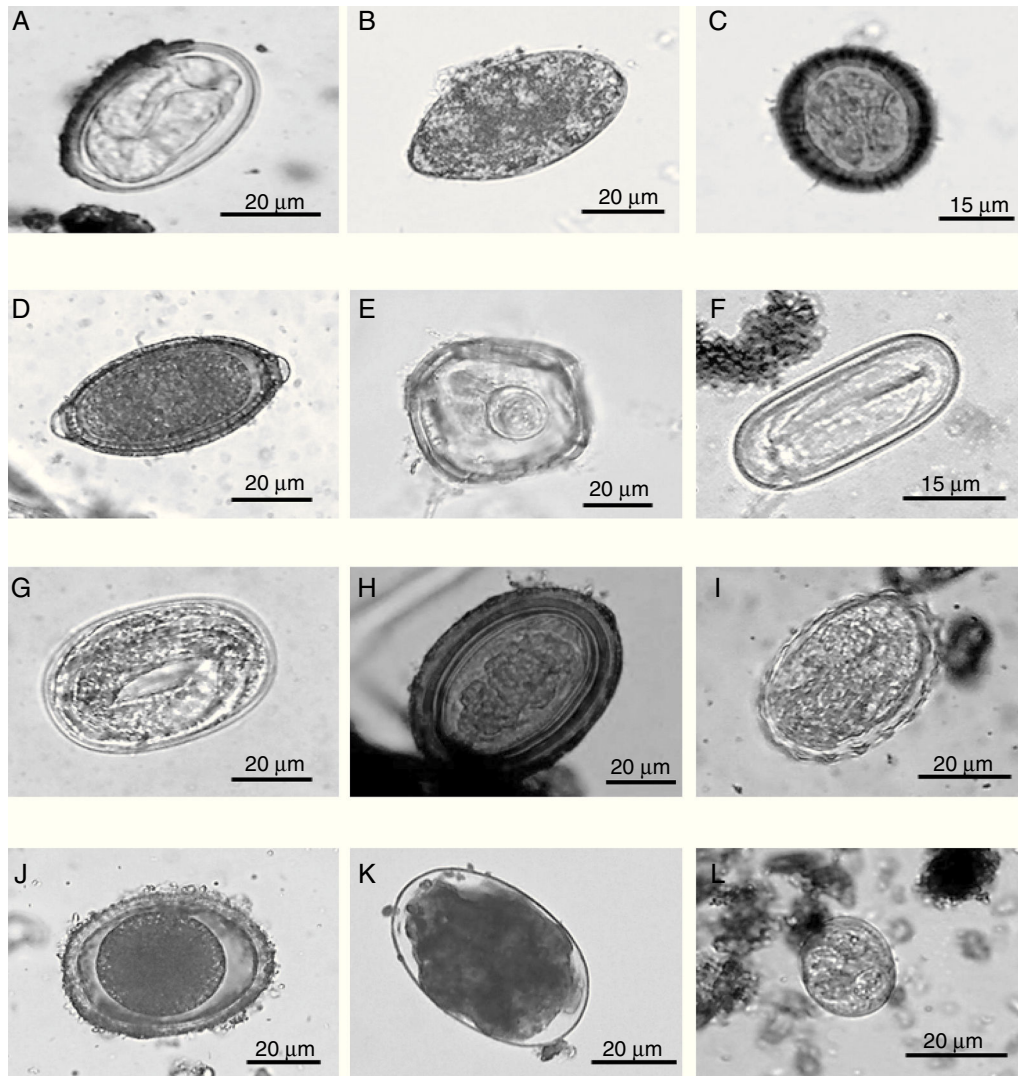


Figure 2. Eggs of intestinal parasites identified in jaguar and puma fecal samples collected in southeastern Mexico: A=*Physaloptera* sp.; B=*Spirometra* sp.; C=Taeniidae; D=*Trichuris* sp.; E=Anoplocephalid; F=*Spirocerca* sp.; G=*Strongyloides* sp.; H= Acanthocephalan; I= Ascarid-like egg; J=*Toxocara* sp.; K=*Ancylostoma* sp.; L= coccidian.

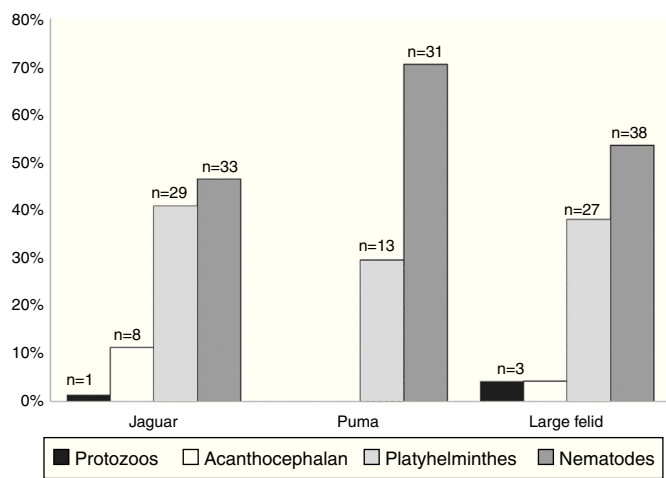


Figure 3. Prevalence of the parasitic phyla found in fecal samples of free-ranging jaguar and puma inhabiting tropical forests in southeastern Mexico.

with its definitive host but it did not establish within the feline host.

*Strongyloides* spp. were among the most common parasites found in this study with 4 forms of eggs; unfortunately we were not able to identify the species neither by eggs shape nor by size. *Strongyloides* is a highly diverse genus of common parasitic nematodes of vertebrates (Dorris, Viney, & Blaxter, 2002). Three species have been reported to infect felines: *S. felis*, *S. planiceps* and *S. tumefaciens*; but only the last one has been reported for America as a parasite of pumas in Florida (Forrester, 1992). It has also been observed that *S. stercoralis*, a parasite of humans and dogs, can infect felines under laboratory conditions (Bowman, Hendrix, Lindsay, & Barr, 2002); thus the possibility of a potential cross-transmission of this parasite to wild felines via humans or domestic fauna could not be discarded.

*Toxocara cati* is a recurrent parasite of wild felines in the Neotropics (Foster et al., 2006; García-Prieto et al., 2012; Srebek-Araujo et al., 2014), and it is also a common parasite of domestic cats. This parasite can be transmitted directly by egg

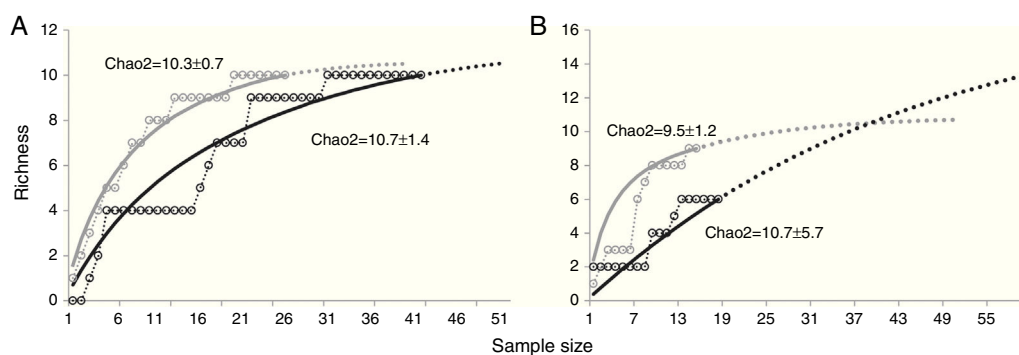


Figure 4. Parasite species richness for jaguar and puma in southeastern Mexico. A, Jaguar; B, puma. Tropical rainforest = black; semi-deciduous tropical forest = gray. Species accumulation curves (open circles); randomized curves (solid lines); extrapolation of accumulation curves (dotted lines).

ingestion or through paratenic hosts, such as mice (Bowman et al., 2002). Moreover, *Toxocara canis* the dog roundworm, has been reported to be found also in cats (Bowman et al., 2002). Given the conditions of forest fragmentation and constant human presence, it is possible that an interchange of *Toxocara* sp. between wild felines and domestic dogs and cats via paratenic hosts might be occurring in the study sites.

We found ascarid-like eggs in jaguar and puma samples from both forest types. *Lagochilascaris* is a genus of parasites that infects mostly carnivores, by preying on mammalian intermediate hosts infected with encysted L3 in their muscle tissue (Campos, Freire-Filha, Vieira, Paco, & Maia, 1992). However, the ascarid-like egg that we found in the present study differs in size and shape from *Lagochilascaris*, and rather resembles the *Ascaris* egg, a common parasite of pigs and humans. However, the information obtained in this study was not enough to confirm the identity of these eggs.

Parasitic prevalence and parasite community richness were relatively equal between jaguar and puma samples. However, the shared gastrointestinal parasitic fauna was only 37%, even though they both are top predators, and they coexist in the majority of their distribution range in Mexico. Differences in their intestinal parasitic fauna could be related to diet differences or segregation in habitat use (de Oliveira, 2002; Estrada-Hernández, 2008; Harmsen, Foster, Silver, Ostro, & Doncaster, 2009; Scognamiglio, Maxit, Sunquist, & Polisar, 2003). For example, jaguars are thought to be relative forest specialists in comparison to the more generalist habitat associations of pumas. Additionally, differences could be influenced by distinct host–parasite evolutionary histories of each felid, driving host specificity and sensitivity, but also limiting the shared parasitic taxa because of divergent ancestry (Adamson & Caira, 1994; Paterson & Banks, 2001; Poulin, 1995).

Parasitic communities of jaguar and puma are more similar between host species in the same forest type than among conspecifics inhabiting different forest types. Differences in parasite communities within host species have been previously observed in mammals and fish, where similarities decay with geographic and environmental distances between host populations (Krasnov, Mouillot, Shenbrot, Khokhlova, & Poulin, 2010; Poulin, 2003; Warburton, Kohler, & Vonhof, 2015). The 2 types of forest sampled in the present study are located in 2 disparate

regions of southeastern Mexico, each of them characterized by presenting different landscape composition, as well as climatic conditions such as temperature and precipitation regimes, and humidity. Hence the dissimilarities found in parasitic community composition among conspecifics could be strongly related to the ecosystem differences of the 2 regions, such as flora and fauna assemblages and abiotic conditions associated with each forest type, influencing which parasite species are more likely to infect these felines in each region (Holt, Dobson, Begon, Bowers, & Schaubert, 2003).

The presence of several specimens of parasites that resemble species typically found in humans or domestic animals, and that have not been reported for jaguar or puma (such as the ascarid-like eggs, and a high variety of *Strongyloides* eggs) suggests a close and continuous contact between wild felines, human villages and livestock, and a possible cross-transmission of parasites.

The increase in the wildlife–livestock contact is of major concern because the potential that it represents for the emergence of diseases, and the spread of parasites leading to both wildlife and human health issues (Daszak, Cunningham, & Hyatt, 2001). More studies increasing sampling efforts throughout their distribution are needed to better estimate parasite richness in free-ranging populations of these 2 felines. Studies in areas with different habitat perturbation degrees could help reveal the effects of human–wildlife contact on the host–parasite ecology.

Most of the wild felids in Mexico are considered as threatened species by the environmental authorities (Semarnat, 2010). Given their conservation status, the majority of the parasitological studies rely only on the information that we can get from the scats samples. Non-invasive fecal sampling proved to be an effective technique for studying the parasitic fauna of threatened species, and hence their health status. However, fecal examination has strong limitations, especially at the moment of parasite species identification and burden estimates. Molecular techniques and DNA extraction from parasite eggs found during fecal examinations would help to overcome these difficulties, and could also be a useful tool for assessing the risk of cross-transmission between human/domestic fauna and wildlife, and its implications for the persistence of threatened taxa.

## Acknowledgements

We acknowledge the individual working dogs, Sadie May and Scooby, of the UW Conservation Canines, for their tireless energy and contribution to a good natured field team. We also thank all the local people for their hospitality and help during field work, along with the staff of El Eden nature preserve, especially the director, Marco Lazcano. We sincerely thank Arturo Gómez Pompa and Cristina Mac Swiney for their valuable support. We also thank Martín García Varela for his help and comments. The CNHE aided us with the parasite identification. This study was partially funded by Conacyt in Mexico and the Veracruz State Government (Grant Number 108990). The UW Department of Biology Riddiford-Truman graduate–student award used to partially fund travel of the CK9 team.

## References

- Adamson, M., & Cairns, J. (1994). Evolutionary factors influencing the nature of parasite specificity. *Parasitology*, *109*(S1), S85–S95.
- Aranda, M., & Sánchez-Cordero, V. (1996). Prey spectra of jaguar (*Panthera onca*) and puma (*Puma concolor*) in tropical forests of Mexico. *Studies on Neotropical Fauna and Environment*, *31*, 65–67.
- Bowman, D. D., Hendrix, C. M., Lindsay, D. S., & Barr, S. C. (2002). *Feline clinical parasitology*. Iowa: Iowa State University Press.
- Brousset, D. M., & Aguirre, A. A. (2007). Evaluación de salud de las poblaciones silvestres de jaguar como una estrategia para su conservación. In G. Ceballos, C. Chávez, R. List, & E. Zarza (Eds.), *Conservación y manejo del jaguar en México: estudios de caso y perspectivas* (pp. 161–169). Mexico: Conabio, UNAM, WWF.
- Bush, A. O., Lafferty, K. D., Lotz, J. M., & Shostak, A. W. (1997). Parasitology meets ecology on its own terms: Margolis et al. revisited. *Journal of Parasitology*, *1*(83), 575–583.
- Campos, D. M. B., Freire-Filha, L. G., Vieira, M. A., Paco, J. M., & Maia, M. A. (1992). Experimental life cycle of *Lagochilascaris minor* Leiper, 1909. *Revista do Instituto de Medicina Tropical de São Paulo*, *34*, 277–287.
- Ceballos, G. J., & Oliva, G. (2005). *Los mamíferos silvestres de México*. Ciudad de México: Fondo de Cultura Económica/Conabio.
- Challenger, A., & Soberón, J. (2008). Los ecosistemas terrestres. In *Capital natural de México, vol. I. Conocimiento actual de la biodiversidad*. pp. 87–108. Ciudad de México: Conabio.
- Chaves, P. B., Graeff, V. G., Lion, M. B., Oliveira, L. R., & Eizirik, E. (2011). DNA barcoding meets molecular scatology: short mtDNA sequences for standardized species assignment of carnivore noninvasive samples. *Molecular Ecology Resources*, *1*–18.
- Colwell, R. K. (2013). *EstimateS: statistical estimation of species richness and shared species from samples. Version 9. User's Guide and application..* Available at: <http://purl.oclc.org/estimates>
- Daszak, P., Cunningham, A. A., & Hyatt, A. D. (2001). Anthropogenic environmental change and the emergence of infectious diseases in wildlife. *Acta Tropica*, *78*, 103–116.
- de Oliveira, T. G. (2002). Comparative feeding ecology of jaguar and puma in the Neotropics. In R. A. Medellín, C. Equihua, C. L. B. Chetkiewicz, P. G. Crawshaw Jr., A. Rabinowitz, K. H. Redford, J. G. Robinson, E. W. Sander-son, & A. B. Taber (Eds.), *El jaguar en el nuevo milenio* (pp. 265–288). Mexico, D.F.: Fondo de Cultura Económica, UNAM, Wildlife Conservation Society.
- Demar, M., Ajzenberg, D., Serrurier, B., Dardé, M. L., & Carme, B. (2008). Atypical *Toxoplasma gondii* strain from a free living jaguar (*Panthera onca*) in French Guiana. *American Journal of Tropical Medicine and Hygiene*, *78*, 195–197.
- Dorris, M., Viney, M. E., & Blaxter, M. L. (2002). Molecular phylogenetic analysis of the genus *Strongyloides* and related nematodes. *International Journal for Parasitology*, *32*, 1507–1517.
- Dove, A. D. M., & Cribb, T. H. (2006). Species accumulation curves and their applications in parasite ecology. *Trends in Parasitology*, *22*, 568–574.
- Estrada-Hernández, C. G. (2008). Dieta, uso de hábitat y patrones de actividad del puma (*Puma concolor*) y el jaguar (*Panthera onca*) en la selva Maya, Centroamérica. *Revista Mexicana de Mastozoología*, *12*, 113–130.
- Fiorello, C. V., Robbins, R. G., Maffei, L., & Wade, S. E. (2006). Parasites of free ranging small canids and felid in the Bolivian Chaco. *Journal of Zoo and Wildlife Medicine*, *37*, 130–134.
- Forrester, D. J. (1992). *Parasites and diseases of wild mammals in Florida*. Gainesville: University of Florida Press.
- Foster, G. W., Cunningham, M. W., Kinsella, J. M., McLaughlin, G., & Forrester, D. J. (2006). Gastrointestinal helminths of free-ranging Florida panthers (*Puma concolor coryi*) and the efficacy of the current anthelmintic treatment protocol. *Journal of Wildlife Diseases*, *42*, 402–406.
- García-Prieto, L., Falcón-Ordaz, J., & Guzmán-Cornejo, C. (2012). Helminth parasites of wild Mexican mammals: list of species, hosts and geographical distribution. *Zootaxa*, *3290*, 1–92.
- Greiner, E. C., & McIntosh, A. (2009). Collection methods and diagnostic procedures for primate parasitology. In M. A. Huffman, & C. A. Chapman (Eds.), *Primates parasite ecology. The dynamics and study of host–parasite relationships* (pp. 3–27). Cambridge: Cambridge University Press.
- Harmsen, B. J., Foster, R. J., Silver, S. C., Ostro, L. E. T., & Doncaster, P. (2009). Spatial and temporal interactions of sympatric jaguars (*Panthera onca*) and pumas (*Puma concolor*) in a Neotropical forest. *Journal of Mammalogy*, *90*, 612–620.
- Hendrix, C. M. (1998). *Diagnostic veterinary parasitology* (2nd ed.). St. Louis, Missouri: Mosby.
- Holt, R. D., Dobson, A. P., Begon, M., Bowers, R. G., & Schaubert, E. M. (2003). Parasite establishment in host communities. *Ecology Letters*, *6*, 837–842.
- Krasnov, B. R., Mouillot, D., Shenbrot, G. I., Khokhlova, I. S., & Poulin, R. (2010). Deconstructing spatial patterns in species composition of ectoparasite communities: The relative contribution of host composition, environmental variables and geography. *Global Ecology and Biogeography*, *19*, 515–526.
- Laurenson, M. K., Mlengeya, T., Shiferaw, F., & Cleaveland, S. (2005). Approaches to disease control in domestic canids for the conservation of endangered wild carnivores. In A. S. Osofsky, S. Cleaveland, B. W. Karesh, D. M. Kock, J. P. Nyhus, & L. Y. A. Starr (Eds.), *Conservation and development interventions at the wildlife/livestock interface implications for wildlife, livestock and human health* (pp. 141–146). Cambridge: IUCN.
- May, R. M. (1998). Conservation and disease. *Conservation Biology*, *2*, 28–29.
- Medellín, R. A., Equihua, C., Chetkiewicz, C. L. B., Crawshaw, P. G., Jr., Rabinowitz, A., & Redford, K. H., et al. (Eds.). (2002). *El Jaguar en el nuevo milenio*. Mexico, D.F.: Fondo de Cultura Económica, UNAM, Wildlife Conservation Society.
- Noronha, D., Ferreira, L. F., Rangel, A., Araujo, A., & Correa-Gomes, D. (1994). *Echinopardalis* sp. (Acanthocephala Oligacanthorhynchidae) eggs in felid coprolites dated from 9,000 years before the present, found in the Brazilian Northeast. *Memórias do Instituto Oswaldo Cruz*, *89*, 119–120.
- Nowell, K., & Jackson, P. (1996). *Wild cats. Status survey and conservation action plan*. Gland, Switzerland and Cambridge, UK: IUCN/SSC Cat Specialist Group.
- Núñez, R., Miller, B., & Lindzey, F. (2000). Food habits of jaguars and pumas in Jalisco, Mexico. *Journal of Zoology*, *252*, 373–379.
- Paterson, A. M., & Banks, J. (2001). Analytical approaches to measuring cospeciation of host and parasites: through a glass, darkly. *International Journal for Parasitology*, *31*, 1012–1022.
- Patton, S., Rabinowitz, A., Randolph, S., & Johnson, S. (1986). A coprological survey of parasites of wild neotropical felidae. *Journal of Parasitology*, *72*, 517–520.
- Poulin, R. (1995). Phylogeny, ecology, and the richness of parasite communities in vertebrates. *Ecological Monographs*, *65*, 283–302.
- Poulin, R. (2003). The decay of similarity with geographical distance in parasite communities of vertebrate hosts. *Journal of Biogeography*, *30*, 1609–1615.
- Rickard, L. G., & Foreyt, W. J. (1992). Gastrointestinal parasites of cougars (*Felis concolor*) in Washington and the first report of *Ollolamus tricuspis* in a sylvatic felid from North America. *Journal of Wildlife Diseases*, *28*, 130–133.

- Schmidt, G. D. (1972). Revision of the Class Archiacanthocephala Meyer, 1931 (Phylum Acanthocephala), with emphasis on Oligacanthorhynchidae Southwell et Macfie, 1925. *Journal of Parasitology*, 58, 290–297.
- Scognamiglio, D., Maxit, I. E., Sunquist, M., & Polisar, J. (2003). Coexistence of jaguar (*Panthera onca*) and puma (*Puma concolor*) in a mosaic landscape in the Venezuelan llanos. *Journal of Zoology*, 259(3), 269–279.
- Semarnat (Secretaría de Medio Ambiente y Recursos Naturales). (2010). *Norma Oficial Mexicana NOM-059-ECOL-2010, Protección ambiental – especies nativas de México de flora y fauna silvestres – Categorías de riesgo y especificaciones para su inclusión, exclusión o cambio – Lista de especies en riesgo*. México: Diario Oficial de la Federación. Jueves 30 de diciembre de 2010.
- Srbek-Araujo, A. C., Costa-Santos, J. L., Medeiros de Almeida, V., Pezzi-Guimaraes, M., & Garcia-Chiarelo, A. (2014). First record of intestinal parasites in a wild population of jaguar in the Brazilian Atlantic Forest. *Revista Brasileira de Parasitologia Veterinaria*, 23, 393–398.
- Vieira, F. M., Luque, J. L., & Muniz-Pereira, L. C. (2008). Checklist of helminth parasites in wild carnivore mammals from Brazil. *Zootaxa*, 1721, 1–23.
- Warburton, E. M., Kohler, S. L., & Vonhof, M. J. (2015). Patterns of parasite community dissimilarity: the significant role of land use and lack of distance-decay in a bat-helminth system. *Oikos*, 125, 374–385.
- Wasser, S. K., Davenport, B., Ramage, E. R., Hunt, K. E., Parker, M., Clarke, C., et al. (2004). Scat detection dogs in wildlife research and management: application to grizzly and black bears in the Yellowhead Ecosystem, Alberta, Canada. *Canadian Journal of Zoology*, 82, 475–492.