

## Image of the Month

## Liver Herniation After Extrapleural Pneumonectomy Due to a Mesothelioma<sup>☆</sup>

### Herniación hepática tras neumonectomía extrapleural por mesotelioma

Emilio Peña,<sup>a</sup> Montserrat Blanco,<sup>a,\*</sup> José Ignacio Rivas-Polo,<sup>b</sup> Jhon Christian Durán<sup>a</sup>

<sup>a</sup> Servicio de Cirugía Torácica, Complejo Hospitalario Universitario de Vigo, Vigo, Spain

<sup>b</sup> Servicio de Cirugía General, Complejo Hospitalario Universitario de A Coruña, La Coruña, Spain

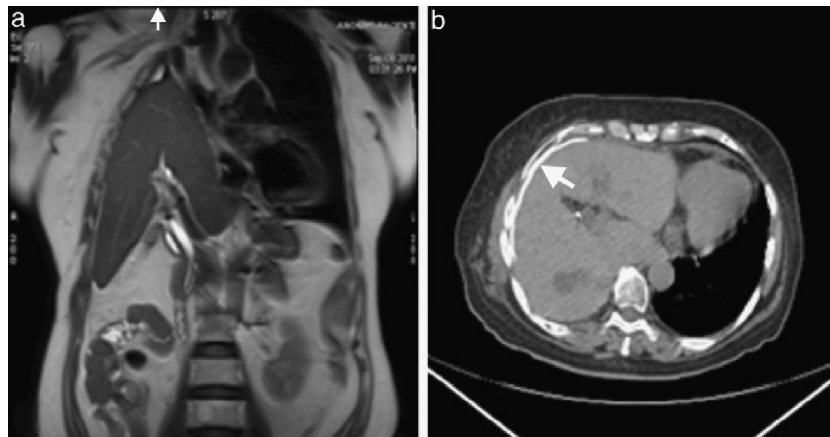


Fig. 1

The patient is a 66-year-old woman who had undergone a right extrapleural pneumonectomy 2 years earlier for pleural mesothelioma (stage II) and had received adjuvant chemo- and radiotherapy. During the procedure, a Gore-Tex<sup>®</sup> patch was used to reconstruct the diaphragm. Six months after surgery, a follow-up MRI was ordered due to high transaminase levels, and herniation of the liver into the thorax was observed (Fig. 1a). CT showed the patch situated under the wall (Fig. 1b, arrow). In spite of this complication, the patient presents good quality of life and has required no treatment.

<sup>☆</sup> Please cite this article as: Peña E, Blanco M, Rivas-Polo JI, Durán JC. Herniación hepática tras neumonectomía extrapleural por mesotelioma. Cir Esp. 2013;91:389.

\* Corresponding author.

E-mail address: [montseblancoramos@hotmail.com](mailto:montseblancoramos@hotmail.com) (M. Blanco).