

Image of the month

Locoregional Recurrence of Hurthle Cell Carcinoma[☆]

Recidiva locorregional de carcinoma de células de Hürthle

Aroa Abascal Amo,^{*} Elena Martín-Pérez, José-Miguel Bravo Lifante,
Eduardo Larrañaga Barrera

Servicio de Cirugía General y del Aparato Digestivo, Hospital Universitario de La Princesa, Madrid, Spain



Fig. 1



Fig. 2

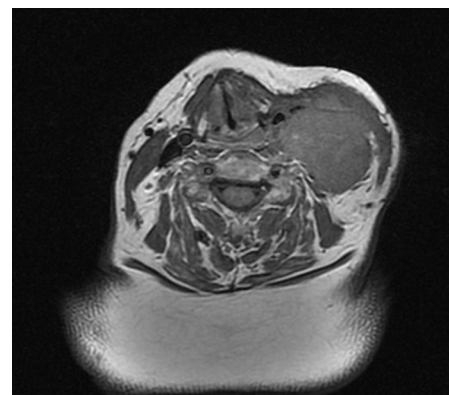


Fig. 3

The patient is a 61-year-old woman who had undergone total thyroidectomy and central and left lateral lymphadenectomy due to Hürthle cell carcinoma 5 months earlier. She referred cervical pain, dyspnea, and a left lateral neck mass (Fig. 1). Cervical MRI demonstrated a tumor extending from the thyroidectomy bed to the left jugular-carotid space that infiltrated the carotid, retropharyngeal space, submandibular and parotid glands, sternocleidomastoid muscle and C2 transverse process (Figs. 2 and 3).

Hürthle cell carcinomas exhibit lymphatic and hematogenous dissemination, higher local tumor recurrence and mortality than typical follicular carcinoma.

[☆] Please cite this article as: Abascal Amo A, Martín-Pérez E, Bravo Lifante JM, Larrañaga Barrera E. Recidiva locorregional de carcinoma de células de Hürthle. Cir Esp. 2013;91:e57.

^{*} Corresponding author.

E-mail address: aroabas@gmail.com (A. Abascal Amo).