



Image of the month

Giant Iatrogenic Hepatic Hematoma With Abnormal Morphology[☆]



Hematoma hepático iatrogénico gigante de morfología anómala

Izaskun del Hoyo Aretxabala,^{a,*} Mikel Prieto Calvo,^b Alberto Ventoso Castiñeira,^b Andrés Valdivieso López^b

^a Servicio de Cirugía General y Aparato Digestivo, Hospital Universitario Basurto, Bilbao, Vizcaya, Spain

^b Unidad de Cirugía Hepatobiliar y Trasplante Hepático, Hospital Universitario Cruces, Barakaldo, Vizcaya, Spain



Fig. 1



Fig. 2



Fig. 3

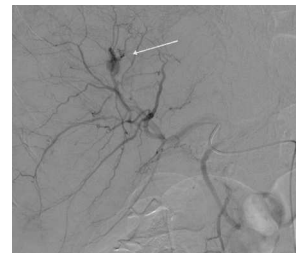


Fig. 4

The patient is a 70-year-old male who was undergoing studies due to a left hepatic mass measuring 7 cm×7 cm (Fig. 1) with peritoneal implants. After percutaneous biopsy, the patient presented intense epigastralgia associated with a hypertensive crisis. CT scan detected a large intrahepatic hematoma with active bleeding that occupied practically the entire liver, with anomalous morphology simulating metastatic lesions (Figs. 2 and 3). Arteriography showed active hemorrhage in segment IV (Fig. 4), which was controlled by arterial embolization. After embolization, the patient had intense cytolysis (GPT 4400 IU/L) that improved slowly and he was discharged after a follow-up CT scan 13 days after hospitalization.

[☆] Please cite this article as: del Hoyo Aretxabala I, Prieto Calvo M, Ventoso Castiñeira A, Valdivieso López A. Hematoma hepático iatrogénico gigante de morfología anómala. Cir Esp. 2015;93:411.

* Corresponding author.

E-mail address: izaskun.delhoyoaretxabala@osakidetza.net (I. del Hoyo Aretxabala).