



## Image of the month

## Ileo-Enteric Fistula Caused by an Infiltrating Rectal Cancer ☆



## Fístula íleo-entérica secundaria a cirugía de cáncer de recto infiltrante

Sara Busto Suárez, \* Amer Zanabali Al-Sibbai, Livia Revuelta Mariño, Manuel Alonso Pérez

Servicio de Angiología y Cirugía Vasculard, Hospital Universitario Central de Asturias, Oviedo, Asturias, Spain



Fig. 1

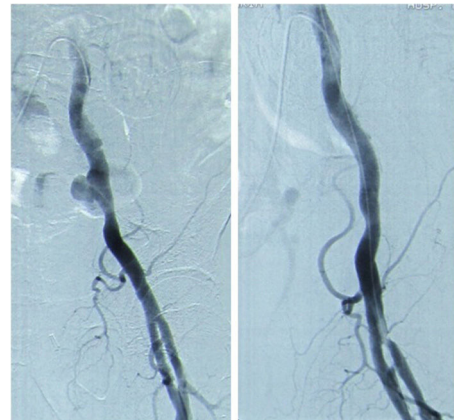


Fig. 2

The patient is a 65-year-old male who was treated surgically for adenocarcinoma of the mid-rectum with infiltration of the bladder, entailing a Hartmann-type resection, Bricker urinary diversion and cystoprostatectomy. During surgery, the origin of the left external iliac artery was accidentally severed, which was repaired with end-to-end anastomosis and ligation of the left hypogastric artery. The patient was re-hospitalized 3 months later due to episodes of rectal hemorrhage and bleeding though the urinary stoma. CT angiography revealed a pseudoaneurysm of the left external iliac artery with an ileo-enteric fistula (Fig. 1). The intraoperative angiography confirmed this finding, which was resolved with the placement of a self-expandable coated stent (Fig. 2).

Diagnosis: iliac-enteric fistula

☆ Please cite this article as: Busto Suárez S, Zanabali Al-Sibbai A, Revuelta Mariño L, Alonso Pérez M. Fístula íleo-entérica secundaria a cirugía de cáncer de recto infiltrante. Cir Esp. 2017;95:230.

\* Corresponding author.

E-mail address: sarabusto9@gmail.com (S. Busto Suárez).