



## Image of the month

## Obstructive Uropathy in a Patient With Double District Ureter<sup>☆</sup>



### Uropatía obstructiva en paciente con doble sistema colector

Diana Miguel Mesa,<sup>\*</sup> Ángela de la Hoz Rodríguez, Jose María Lopesino González, Jose Luis Muñoz de Nova

Servicio de Cirugía General y Digestiva, Hospital Universitario de la Princesa, Madrid, Spain

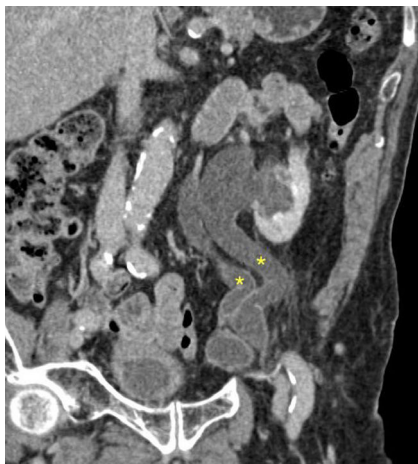


Fig. 1



Fig. 2

A 90-year-old male underwent transurethral resection for urothelial bladder cancer, during which the left ureteral meatus could not be visualized due to the large tumor size. Due to fever in the postoperative period, computed tomography was performed, which demonstrated left obstructive uropathy secondary to the persistence of neoplasm at the level of the ureteral meatus. A double collecting system of the left kidney was also diagnosed (asterisk; Fig. 1), which was fused in the interior of a left inguinal hernia (arrow; Fig. 2). Inguinal hernia repair was performed according to the Lichtenstein technique, previously approaching the preperitoneal space in order to place a double J catheter and carry out another transurethral resection.

Diagnosis: obstructive uropathy with a duplex collecting system.

#### Acknowledgements

The authors would like to thank the radiology service for their help in the selection and collection of the images presented in this manuscript.

<sup>☆</sup> Please cite this article as: Miguel Mesa D, de la Hoz Rodríguez Á, Lopesino González JM, Muñoz de Nova JL. Uropatía obstructiva en paciente con doble sistema colector. Cir Esp. 2018;96:376.

<sup>\*</sup> Corresponding author.

E-mail address: [d.miguel.mesa@hotmail.com](mailto:d.miguel.mesa@hotmail.com) (D. Miguel Mesa).