



Image of the month

Double Inferior Vena Cava With Double Left Renal Vein ☆



Doble vena cava inferior con doble vena renal izquierda

Lucía González González,^{a,*} Félix Cambra Molero,^b Néstor Taboada Mostajo,^a
Luis Carlos Jiménez Romero^c

^a Hospital Universitario 12 de Octubre, Madrid, Spain

^b Unidad de Hepatobiliopancreática y Trasplante de Órganos, Hospital Universitario 12 de Octubre, Madrid, Spain

^c Sección de Hepatobiliopancreática y Trasplante de Órganos, Hospital Universitario 12 de Octubre, Madrid, Spain



Fig. 1

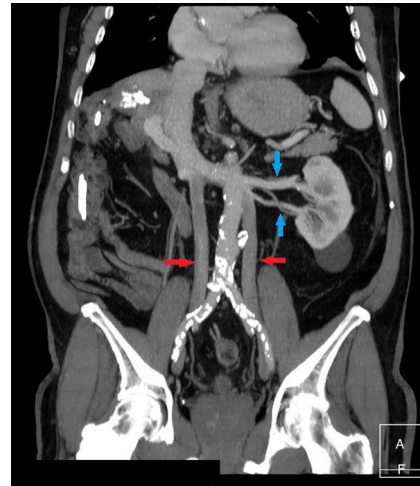


Fig. 2 – Red arrows: double vena cava; Blue arrows: double renal vein.

The patient had undergone hepaticojejunostomy. During a follow-up CT scan (Figs. 1 and 2), a double vena cava was found incidentally in the infrarenal area, and one of the branches of the left renal vein draining to the left was also duplicated. Further below, the iliac disposition was standard. This anomaly occurs in 0.5%–3% of the population, and is due to the persistence of both supracardinal veins during embryonic development.

Acknowledgements

The Radiology Department team at the Hospital 12 de Octubre, Madrid, Spain.

☆ Please cite this article as: González González L, Cambra Molero F, Taboada Mostajo N, Jiménez Romero LC. Doble vena cava inferior con doble vena renal izquierda. *Cir Esp.* 2018;96:378.

* Corresponding author.

E-mail address: luciaggonzalez91@hotmail.com (L. González González).