



Image of the month

Diagnostic Delay During the COVID-19 Pandemic: Liver Abscess Secondary to Acute Lithiasic Cholecystitis[☆]



Retraso diagnóstico durante la pandemia por COVID-19: absceso hepático secundario a colecistitis aguda litiásica

Mariana García Virosta,^{*} Irene Ortega, Esther Ferrero, Antonio Luis Picardo

Servicio de Cirugía General y Aparato Digestivo, Hospital Universitario Infanta Sofía, San Sebastián de los Reyes, Madrid, Spain

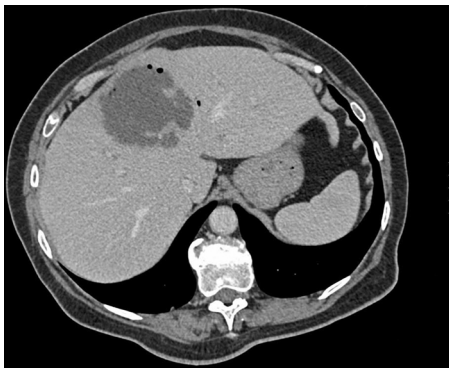


Fig. 1

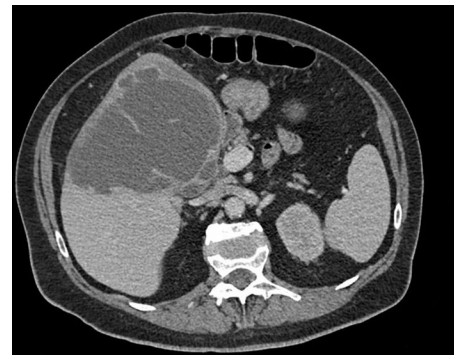


Fig. 2

The patient is a 70-year-old woman with hypertension, diabetes and hypertensive heart disease, who consulted for pain in the right hypochondrium that had been progressing for 2 weeks, associated with fever and vomiting. She presented with renal failure and refractory hypotension. Urgent CT scan showed acute lithiasic cholecystitis with a liver abscess measuring 13 cm. Urgent ultrasound-guided percutaneous drainage was performed in the operating room, initiating antibiotic therapy and hemodynamic support. After good clinical evolution, the patient was discharged on the tenth day (Figs. 1 and 2).

Home confinement due to SARS-CoV-2 and the fear of becoming infected at the hospital have led to a serious delay in diagnoses, which means that surgeons will be faced with more complex surgical emergencies.

[☆] Please cite this article as: García Virosta M, Ortega I, Ferrero E, Picardo AL. Retraso diagnóstico durante la pandemia por COVID-19: absceso hepático secundario a colecistitis aguda litiásica. Cir Esp. 2020;98:409.

^{*} Corresponding author.

E-mail address: marianavirosta@gmail.com (M. García Virosta).