



Video of the month

Outflow control of the right hepatic vein during laparoscopic right hepatectomy[☆]

Control de la vena suprahepática derecha durante la hepatectomía derecha laparoscópica

Fernando Pardo Aranda,^{*} Francisco Espín Álvarez, Jordi Navines López, Esteban Cugat Andorrà

Unidad Hepatobiliopancreática, Cirugía General y Digestiva, Hospital Universitario Germans Trias i Pujol, Barcelona, Spain

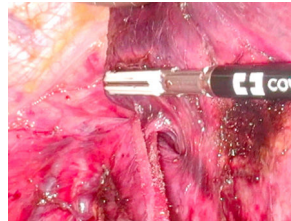


Fig. 1

Control of the right hepatic vein is one of the most demanding maneuvers during laparoscopic right hepatectomy. This video shows three different ways to control it. The first two patients were diagnosed with liver metastases of colorectal origin and the third patient with liver metastases from an ileal gastrointestinal stromal tumor (GIST). In the first video, the vein is checked from bottom to top, prior to liver transection. In the second video, also prior to transection, the vein is monitored from top to bottom, and in the third video it is monitored after performing the liver transection (Fig. 1).

Diagnosis

Liver metastasis

Conflict of interests

The authors have no conflict of interests to declare.

Appendix A. Supplementary data

Supplementary material related to this article can be found, in the online version, at doi:<https://doi.org/10.1016/j.ciresp.2020.06.012>.

[☆] Please cite this article as: Pardo Aranda F, Espín Álvarez F, Navines López J, Cugat Andorrà E. Control de la vena suprahepática derecha durante la hepatectomía derecha laparoscópica. Cir Esp. 2021;99:310.

^{*} Corresponding author.

E-mail address: fpardoaranda@gmail.com (F. Pardo Aranda).