



Image of the month

Breast edema due to compressive goiter

Edema mamario secundario a bocio compresivo



Génesis Jara Benedetti,* David Martínez Ramos, Raquel Queralt Marín, José Laguna Sastre

Sección de Cirugía General, Hospital General Universitario de Castellón, Castellón, Spain

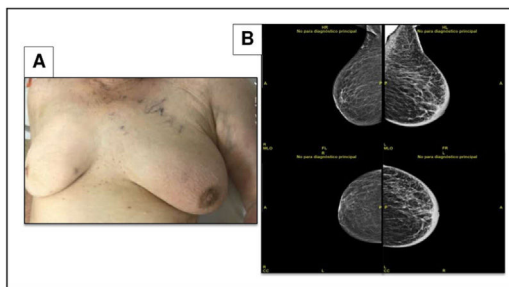


Fig. 1

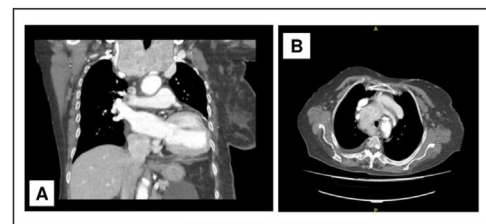


Fig. 2

A 92-year-old female patient presented with breast asymmetry.

Examination revealed an enlarged thyroid gland without nodules and enlargement of the left breast, with erythema and superficial venous circulation, without palpable lesions or axillary lymphadenopathy (Figs. 1 and 2).

Mammography identified skin thickening and diffuse oedema without nodules. The study was extended with cervicothoracic computed tomography (CT), which identified a multinodular goitre causing compression of the left jugular vein, which was responsible for the breast oedema.

* Corresponding author.

E-mail address: genejaraben@gmail.com (G. Jara Benedetti).

<http://dx.doi.org/10.1016/j.cireng.2022.08.004>

2173-5077/© 2022 AEC. Published by Elsevier España, S.L.U. All rights reserved.