

Original article

Incidence and risk factors for incisional hernia after open abdominal aortic aneurysm repair

Alberto G. Barranquero^{a,*}, Jose Manuel Molina^a, Carmen Gonzalez-Hidalgo^b,
Belen Porrero^a, Luis Alberto Blázquez^a, Julia Ocaña^b,
Claudio Gandarias Zúñiga^b, Jose María Fernández Cebrián^a

^a General and Digestive Surgery Department, Ramón y Cajal University Hospital, Madrid, Spain

^b Vascular and Endovascular Surgery Department, Ramón y Cajal University Hospital, Madrid, Spain

ARTICLE INFO

Article history:

Received 20 January 2021

Accepted 2 August 2021

Keywords:

Incisional hernia
Abdominal aortic aneurysm
Abdominal wall
Abdominal wall closure
Vascular surgery

A B S T R A C T

Introduction: Incisional hernia (IH) is common after open abdominal aortic aneurysm (AAA) repair. Recent studies reported incidence rates higher than previously stated. The aim of this study was to quantify the IH incidence after open AAA surgery. The secondary outcome was to identify the risk factors associated with the development of an IH.

Methods: Retrospective observational study of all consecutive patients who underwent an open repair of AAA, from January 2010 to June 2018, at our institution. Patients were free of abdominal wall hernias at the moment of inclusion in the study. Data were extracted from electronic records: baseline characteristics, surgical factors, and postoperative events. Computed tomography (CT) scans performed during follow-up were analyzed.

Results: A total of 157 patients were analysed. The IH incidence after open repair of AAA was 46.5% (73 patients). The median time for IH development was 24.43 months (IQR: 10.40–45.27), while the median follow-up time was 37.20 months (IQR: 20.53–64.12). The risk factors linked to IH were: active (HR: 4.535; 95% CI: 1.369–15.022) or previous smoking habit (HR: 4.652; 95% CI: 1.430–15.131), chronic kidney disease (HR: 2.007; 95% CI: 1.162–3.467) and previous abdominal surgery (HR: 1.653; 95% CI: 1.014–2.695).

Conclusion: The incisional hernia after open abdominal aortic aneurysm repair affected a high proportion of the intervened patients. Previous abdominal surgery, chronic kidney disease, and smoking habit were independent factors for the development of an incisional hernia.

© 2021 AEC. Published by Elsevier España, S.L.U. All rights reserved.

* Corresponding author.

E-mail address: albertober.21@gmail.com (A.G. Barranquero).

Incidencia y factores de riesgo de hernia incisional tras la cirugía abierta del aneurisma de aorta abdominal

R E S U M E N

Palabras clave:

Hernia incisional
Aneurisma de aorta abdominal
Pared abdominal
Cierre de pared abdominal
Cirugía vascular

Introducción: La hernia incisional (HI) tras la cirugía abierta del aneurisma de aorta abdominal (AAA) es común. Estudios recientes muestran incidencias superiores a las consideradas anteriormente. El objetivo es evaluar la incidencia de HI tras la cirugía abierta del AAA. El objetivo secundario fue evaluar los factores de riesgo de HI.

Métodos: Estudio observacional retrospectivo de pacientes consecutivos sometidos a cirugía abierta del AAA de enero de 2010 a junio de 2018 en nuestro centro. Todos los pacientes estaban libres de hernias de pared abdominal en el momento de la cirugía. Se analizaron los datos de la historia clínica electrónica: características basales, factores quirúrgicos y eventos postoperatorios. Se analizaron también los estudios de tomografía computarizada durante el seguimiento.

Resultados: Se analizaron 157 pacientes. La incidencia de HI tras la cirugía abierta del AAA fue del 46,5% (73 pacientes). La mediana de tiempo para el desarrollo de HI fue de 24,43 meses (RIC 10,40-45,27), con una mediana de seguimiento de 37,20 meses (RIC 20,53-64,12). Los factores de riesgo asociados fueron: tabaquismo activo (HR 4,535; IC 95% 1,369-15,022) o hábito tabáquico previo (HR 4,652; IC 95% 1,430-15,131), enfermedad renal crónica (HR 2,007; IC 95% 1,162-3,467) y cirugía abdominal previa (HR 1,653; IC 95% 1,014-2,695).

Conclusiones: La HI tras la cirugía abierta del AAA afectó a un gran número de pacientes intervenidos. La cirugía abdominal previa, la enfermedad renal crónica y el hábito tabáquico fueron factores de riesgo independientes de HI.

© 2021 AEC. Publicado por Elsevier España, S.L.U. Todos los derechos reservados.

Introduction

Background

Abdominal aortic aneurysm (AAA) repair is recommended when the aneurysm diameter exceeds 5.5 cm in the male or 5 cm in female patients.¹ Even in the era of endovascular aortic repair, there is still a considerable proportion of open surgical repair.²

The IH incidence after a midline incision is estimated to be 12.8% (range: 0–35.6%).³ However, patients who undergo an open repair of AAA face an increased risk of IH.³ The IH incidence after open surgery of AAA ranges from 11.3% to 37.2%^{4–6} but might be up to 54.05%.⁷ More recent studies report higher IH rates with the use of radiological imaging techniques for diagnosis.⁸

Risk factors for AAA and abdominal wall hernias are similar: smoking habit, high body mass index, or chronic obstructive pulmonary disease.^{9–11} AAA and abdominal hernias share pathogenic mechanisms, with increased degradation of collagen type I due to increased metalloproteinase activity and an augmented synthesis of disorganized collagen type III.¹²

IH decreases patients' quality of life, causes chronic pain, and may result in potential complications: hernia incarceration or bowel strangulation.¹³ Population studies show that after an open AAA surgery only 10.4% had an IH repaired.¹⁴ In this context, an optimal abdominal wall closure technique is recommended to reduce the IH incidence.¹⁵

Objective

The primary aim was to quantify the IH rate after open AAA surgery, defined according to the European Hernia Society

(EHS)¹⁶ as “any abdominal wall gap with or without a bulge in the area of a postoperative scar perceptible or palpable by clinical examination or imaging”. The secondary outcome was to identify the risk factors associated with IH.

Methods

This article was written according to the Strengthening the Reporting of Observational Studies in Epidemiology (STROBE) statement: guidelines for reporting observational studies.¹⁷

Study design

Single institution retrospective observational study.

Setting and participants

Patients included were all consecutive patients undergoing an open repair of AAA, from January 1, 2010 to June 1, 2018, at our institution. Our hospital is a tertiary referral center that belongs to the Spanish National Health Service. It is an 800-bed facility and attends a population of 597 000 people. The Vascular Surgery Department is composed of nine surgeons, all performing aortic surgery. The main surgeon in each surgery was responsible for the abdominal wall closure.

Excluded patients were those deceased within 30 days after surgery, those lost to follow-up, or those with midline or lateral abdominal wall hernias prior to the AAA repair. Therefore, all patients were free of hernias at the moment of inclusion in the study.

The design of the study was approved by the institutional Ethics Committee for Clinical Investigation (025-20 resolu-

tion). Permission was obtained to withdraw the informed consent.

Follow-up

Patients were followed up with an annual visit with physical examination and abdominal ultrasound examination. A CT angiography was requested in selected cases to check the prosthesis and evaluate other possible aneurysms of different locations.

During this period, the clinical examinations noted in the electronic medical records, and the CT scans done to the patients for other causes were reviewed. The first description of IH in the medical records, or the first CT scan diagnosing an IH was considered the date of IH formation.

Variables

Data were extracted from the electronic medical records and the CT scans stored in the institution. Preoperative data analysed were: age at AAA surgery, sex, body mass index, patients' comorbidities, personal history of abdominal surgery or hernia, ASA category, and maximum AAA diameter. Intraoperative variables analysed were: timing of surgery, abdominal incision, aortic exposure, type of aortic bypass, and suture used for the closure of the abdominal incision. Postoperative variables were the length of hospital stay, hemoglobin and white blood cell (WBC) count 48 hours after surgery, and postoperative complications according to Clavien-Dindo classification.¹⁸

Study size

Previous articles quantified the IH rate after open repair of AAA from 11.3% to 37.2%.⁴⁻⁶ Therefore, a minimum of 100 participants was required in order to include at least 10 events of interest (IH) to analyze the risk factors in a univariate analysis.

Statistical analysis

Categorical variables were described as numbers and percentages. Quantitative variables with normal distribution were described with mean and standard deviation (sd); and those with non-normal distribution, with median and interquartile range (IQR). The distribution was determined through the Shapiro-Wilk test.

Survival analysis was applied to evaluate the risk factors for IH. A Kaplan-Meier curve was used for the graphical depiction of the IH development. Log-rank test was used for dichotomous categorical variables and Cox regression for polytomous categorical and quantitative variables. Variables were described with Hazard Ratio (HR) and 95% confidence interval (95% CI). Firstly, a univariate analysis of all the variables explored was used. Next, a multivariate analysis with Cox regression was conducted using the variables that showed a higher statistical significance in univariate analysis. $p < 0.05$ was considered statistically significant.

The analysis was performed with IBM® SPSS Statistics 23®.

Results

Participants

A total of 188 patients underwent an open repair of AAA from January 1, 2010, to June 1, 2018, at our institution. Thirty-one patients were excluded applying the exclusion criteria. Therefore, 157 patients were analyzed (Fig. 1).

Descriptive data

Baseline characteristics are shown in Table 1. The majority of the patients were male (96.2%), with a mean age of 70.49 years (sd: 7.23). Cardiovascular risk factors were common, and 89.2% demonstrated an active or previous history of tobacco exposition.

Surgical variables are listed in Table 2. Most patients underwent an elective repair of the AAA (92.4%), through a midline incision (88.5%) with transabdominal exposure of the abdominal aorta (84.1%). The most usual AAA repair was an aorto-aortic bypass (59.2%). The most common suture material for the abdominal wall closure was polydioxanone monofilament (82.2%). No prophylactic meshes in the abdominal wall closure were used.

The postoperative course was uneventful for 59.3% of the patients, with a median postoperative stay of 7 days (IQR: 5.50–10). The 10.8% of the patients suffered major complications according to Clavien-Dindo classification (Table 3).

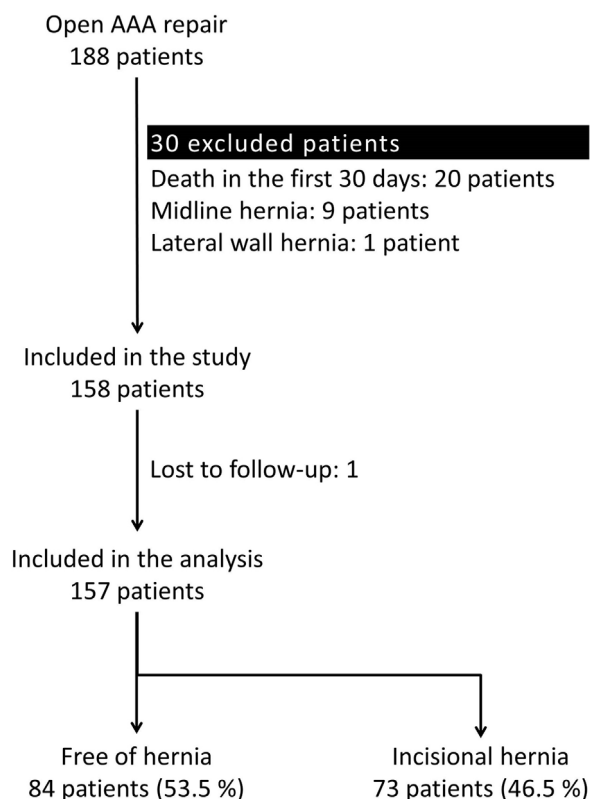


Fig. 1 – Flowchart of participants in the study. Therefore, 157 patients were analysed (Fig. 1).

Table 1 – Baseline characteristics.

	n	%
	Median	IQR
Age (years) ^a	70.49	7.23
Sex (male:female)	151:6	96.2:3.8
BMI (kg/m ²)	26.75	23.99–30.08
Hypertension	113	72%
Dyslipidemia	106	67.5%
Diabetes mellitus	35	22.3%
Smoking habit		
Non-smoker	17	10.8%
Active	54	34.4%
Quitted	86	54.8%
Ischemic heart disease	28	17.8%
COPD	36	22.9%
Chronic kidney disease	29	18.5%
eGFR < 45 ml/min		
Previous abdominal surgery	47	29.9%
History of prior hernia	42	26.8%
Aneurysm maximum diameter (cm)	5.6	5.3–6.4
ASA classification		
II	31	19.7%
III	85	54.1%
IV	17	10.8%
Unknown	24	15.3%
BMI: body mass index.		
eGFR: estimated glomerular filtration rate.		
^a Mean (sd).		

Incisional hernia incidence

During follow-up, 73 patients (46.5%) developed an IH after open AAA repair. In this period, 98 patients (62.4%) underwent a CT scan. The IH rate was even higher in this population, and 59 of them (60.2%) presented an IH.

The median follow-up time for the study population was 37.20 months (IQR: 20.53–64.12). The median time for IH development was 24.43 months (IQR: 10.40–45.27). The IH cumulative incidence is depicted in Fig. 2. Fourteen patients (8.9%) underwent surgical IH repair.

Risk factors for incisional hernia

All variables were explored in univariate analysis as risk factors for incisional hernia, and those found to be risk factors in univariate analysis are depicted in Table 4. The baseline characteristics were: the smoking habit, both active (HR: 4.578; 95% CI: 1.386–15.127 [p: 0.013]) and past (HR: 4.868; 95% CI: 1.501–15.787 [p: 0.008]), and chronic kidney disease (HR: 2.057; 95% CI: 1.193–3.549 [p: 0.015]). Previous history of abdominal surgery was almost statistically significant (HR: 1.621; 95% CI: 0.997–2.635; p: 0.051).

During surgery, patients with an aorto bi-iliac bypass were in a greater risk of IH compared to those with an aorto-aortic bypass (HR: 1.780; 95% CI: 1.088–2.912 [p: 0.22]). The midline incision had a reduced IH rate (61/139; 43.9%) compared to the pararectal incision (12/17; 70.6%), although it was not statistically significant in univariate survival analysis (p: 0.151). There were no statistically significant differences in

Table 2 – Surgical factors.

	n	%
Timing of surgery		
Elective	145	92.4%
Urgent	12	7.6%
Incision		
Midline	139	88.5%
Pararectal	17	10.8%
Lumbotomy	1	0.6%
Aortic exposure		
Transabdominal	132	84.1%
Retroperitoneal	25	15.9%
Aortic bypass		
Aorto-aortic	93	59.2%
Aorto bi-iliac	46	29.3%
Aorto bi-femoral	10	6.4%
Aorto-iliac and femoral	5	3.2%
Aorto-uni-iliac	3	1.9%
Suture		
Polydioxanone monofilament (PDS®)	129	82.2%
Polypropylene monofilament (Prolene®)	9	5.7%
Polyglactin multifilament (Vicryl®)	16	10.2%
Unknown	3	1.9%

IH rate according to the suture material used (p: 0.955): 47.3% (61/129) for polydioxanone monofilament (PDS®), 44.4% (4/9) for polypropylene monofilament (Prolene®), and 43.8% (7/16) for polyglactin multifilament (Vicryl®).

For the postoperative period, patients with complications requiring surgical, endoscopic, or radiological intervention (Clavien-Dindo III) had a greater risk of IH (HR: 2.771; 95% CI: 1.080–7.111 [p: 0.034]). These differences were not detected analyzing only surgical reintervention, with 44.4% (4/9) of reintervened patients having an IH (p: 1.000). Patients who had a surgical site infection had a 40% (2/5) rate of IH. The hemoglobin levels or the WBC count 48 h after surgery were not predictors of further IH development.

Factors with a p-value > 0.2 were not considered for multivariate analysis. Once adjusted in multivariate analysis (Table 4), the risk factors linked to IH development were all

Table 3 – Postoperative course.

	n	%
	Median	IQR
Length of hospital stay (days)	7	5.50–10
Haemoglobin (g/dl) 48 h after surgery	10.3	9.05–11.40
WBC count (WBC/ μ l) 48 h after surgery	10 800	8 500–13 300
Surgical site infection	5	3.2%
Reintervention	9	5.7%
Complications according to Clavien-Dindo classification		
I	7	4.5%
II	39	24.8%
III	9	5.7%
IV	8	5.1%
V	1	0.6%
WBC count: white blood cell count.		

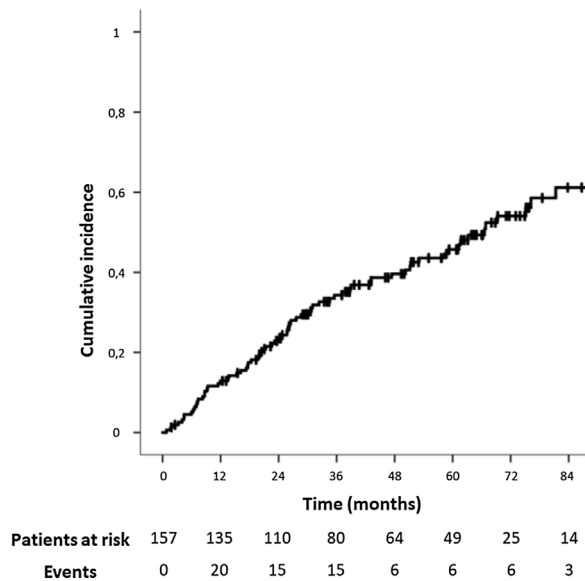


Fig. 2 – Kaplan–Meier curve showing the cumulative incidence of incisional hernia. The IH cumulative incidence is depicted in Fig. 2.

preoperative factors. The smoking habit, both active (HR: 4.535; 95% CI: 1.369–15.022 [p: 0.013]) and past (HR: 4.652; 95% CI: 1.430–15.131 [p: 0.011]), chronic kidney disease (HR: 2.007; 95% CI: 1.162–3.467 [p: 0.012]) and previous abdominal surgery

(HR: 1.653; 95% CI: 1.014–2.695 [p: 0.044]) were independent risk factors.

Discussion

In our study, the IH incidence after open repair of AAA was 46.5%. The first studies provided an IH incidence between 5.4% and 11.3%.^{4,5,19} However, they had several limitations, such as a high rate of loss in follow-up patients or short follow-up periods. More recent articles showed that the IH incidence ranged from 28% to 37.2%.^{6,20} Our IH incidence of 46.5% is only overcome by Fassiadis et al.,⁷ who reported a 54.05% rate.

This higher rate could be explained by the definition of IH through an appropriate measure instrument. One of the strengths of our study was the use of an abdominal CT scan for the evaluation of the abdominal wall in the majority of the subjects, which allowed detecting small defects of the abdominal wall closure that constitute the basis on which larger symptomatic hernias develop. Moreover, the study followed the recommendations published by the EHS with a follow-up period of at least two years.¹⁵ A long and appropriate follow-up time as reported in randomized control trials (RCT)^{6,7,20} allows the development of IH, as it is a late postoperative event. A limitation was that not all patients underwent a CT scan, or the IH diagnosis might have not been listed in the electronic medical records. Therefore, the IH rate could have been even higher.

Table 4 – Risk factors for incisional hernia.

Univariate analysis	HR	95%CI	p-Value
Smoking habit			
Non-smoker	1.000		
Active	4.578	1.386–15.127	0.013
Quitted	4.868	1.501–15.787	0.008
Chronic kidney disease			
Chronic kidney disease	2.057	1.193–3.549	0.015
Previous abdominal surgery			
Previous abdominal surgery	1.621	0.997–2.635	0.051
Aortic bypass			
Aorto-aortic	1.000		
Aorto bi-iliac	1.780	1.088–2.912	0.022
Aorto bi-femoral	1.396	0.497–3.916	0.527
Aorto-iliac and femoral	0.293	0.040–2.141	0.226
Aorto-uni-iliac	2.601	0.625–10.816	0.189
Complications according to Clavien-Dindo classification			
0	1.000		
I	0.000	0.000–1.9 × 10 ¹⁷⁵	0.955
II	1.186	0.708–1.989	0.517
III	2.771	1.080–7.111	0.034
IV	1.024	0.365–2.868	0.964
V	0.000	0.000–1.989	0.998
Multivariate analysis			
Smoking habit			
Non-smoker	1.000		
Active	4.535	1.369–15.022	0.013
Quitted	4.652	1.430–15.131	0.011
Chronic kidney disease			
Chronic kidney disease	2.007	1.162–3.467	0.012
Previous abdominal surgery			
Previous abdominal surgery	1.653	1.014–2.695	0.044

The analysis of risk factors demonstrated the relevance of two classic predictors for IH⁹: the presence of previous abdominal surgery and tobacco consumption. Tobacco triggers the metalloproteinase activity that leads to increased degradation of collagen type I activity and impaired synthesis of collagen type III, which favors the IH formation.¹³ For our cohort, the risk of patients with an active smoking habit was similar to the risk of patients with previous history of tobacco use. An abstinence period of at least four weeks prior to surgery could reduce the wound complications²¹ that might lead to IH. However, patients may not recover their baseline condition.²²

Significant chronic kidney disease, defined in our study as an estimated Glomerular Filtration Rate (eGFR), <45 ml/min, was another risk factor for IH. Uremia toxins might result in fibroblast dysfunction, with alteration of the granulation and epithelialization during the wound healing process.²³ Heller et al. found an increased risk of IH after surgery in patients with an estimated glomerular filtration rate (eGFR) < 60 ml/min, compared to patients with eGFR > 60 ml/min (Odds ratio (OR): 2.8 [95% CI: 1.2-6.1]).²³ The increased risk of IH was also described by Loewe et al.,²⁴ who reported an IH rate of 16% in patients with advanced diabetic nephropathy; compared to 5.7% without nephropathy.

Results from the Danish national database showed a 10.4% hernia repair rate after open elective aortic reconstructive surgery, in six years of follow-up.¹⁴ A similar analysis in New York State presented a 7.93% (739 of 9314) ventral hernia repair rate after open AAA surgery.²⁵ Our results are consistent with those rates, with 14 of 157 patients (8.92%) undergoing IH repair. Given that surgical repair of complex IH is linked to a relevant risk of postoperative complications,²⁶ and considering patients' characteristics, some were rejected for elective surgery due to high operative risk. Since not all patients will see their IH solved, prevention of the IH through an optimal closure technique remains the key.

Current recommendations to reduce the IH rate include the use of non-midline incisions if possible, avoiding the use of rapidly absorbable suture material, and the use of the small bites technique for the closure of the abdominal wall.¹⁵ Strategies proven to reduce the IH rate in patients with an open repair of AAA are a suture to wound length ratio of 4:1, and the placement of a prophylactic mesh.⁸ Abdominal closure with a suture to wound length ratio of more than 4:1 resulted in a reduction of the risk of IH (Relative Risk (RR): 0.42 [95% CI: 0.27-0.65]).⁸ In our study, the suture to wound length ratio was not listed, and could not be analyzed due to the retrospective design, perhaps being inferior to a 4:1 ratio. Besides, some patients were closed with non-recommended suture material¹⁵ such as polyglactin multifilament. These technical factors might have increased the IH rate.

The reinforcement of the abdominal wall closure with a prophylactic mesh after AAA surgery reduces the IH rate compared to the standard sutured closure (RR 0.27 [95% CI: 0.11-0.66]).²⁷ Besides, it is a technique linked to a low rate of postoperative complications that do not increase the surgical site infection rate or the rate of reoperations.²⁷ Except for Bevis et al.,⁶ who used a biological onlay mesh, all other RCT used a polypropylene mesh, either in retromuscular/sublay^{20,28} or onlay position.^{28,29} Jairam et al.^{20,28} compared

the onlay vs. the sublay position, not finding differences in the IH incidence (10/61 (16%) vs. 10/52 (19%); *p*: 0.95). Since the onlay reinforcement is easier than the retromuscular placement of the mesh, it is recommended as the standard mesh localization for abdominal wall closure in high-risk patients.²⁷

Given the epidemic proportions of IH after open repair of AAA, we attempted to implement a homogenous surgical closure technique in our institution, with conferences to widespread the EHS guidelines recommendations.¹⁵ Besides, collaborating with the Vascular Surgery Department, the systematic placement of an onlay prophylactic mesh began. In the following years, the results of an optimal abdominal wall closure and more extensive use of the prophylactic mesh after an open repair of AAA are undoubted to be reported.

Conclusion

The incisional hernia incidence after open repair of abdominal aortic aneurysm is a relevant issue that affected a high proportion of patients. Previous abdominal surgery, chronic kidney disease, and smoking habit were independent risk factors for incisional hernia. The effect of smoking is maintained even after having abandoned the smoking habit.

Authors' contributions

All authors contributed to the study conception and design. Material preparation, data collection and analysis were performed by A.G. Barranquero, J.M. Molina and Gonzalez-Hidalgo. The first draft of the manuscript was written by A.G. Barranquero and all authors commented on previous versions of the manuscript. All authors read and approved the final manuscript.

Funding

Authors received no financial support for the research, authorship, and/or publication of this article.

Conflicts of interest

None.

REFERENCES

1. Chaikof EL, Dalman RL, Eskandari MK, Jackson BM, Lee WA, Mansour MA, et al. The Society for Vascular Surgery practice guidelines on the care of patients with an abdominal aortic aneurysm. *J Vasc Surg.* 2018;67:2-77. <http://dx.doi.org/10.1016/j.jvs.2017.10.044>.
2. Dias-Neto M, Mani K, Leite-Moreira A, Freitas A, Sampaio S. Nationwide analysis of intact abdominal aortic aneurysm repair in Portugal from 2000 to 2015. *Ann Vasc Surg.* 2020;66:54-64. <http://dx.doi.org/10.1016/j.avsg.2019.12.013>.

3. Bosanquet DC, Ansell J, Abdelrahman T, Cornish J, Harries R, Stimpson A, et al. Systematic review and meta-regression of factors affecting midline incisional hernia rates: analysis of 14 618 patients. *PLOS ONE*. 2015;10:e0138745. <http://dx.doi.org/10.1371/journal.pone.0138745>.
4. Drouilhet J, West B, Williams K, Read R, Moursi M. Incisional hernia following aortic surgery. *Hernia*. 1999;3:135-40. <http://dx.doi.org/10.1007/BF01195313>.
5. Kirby LB, Rosenthal D, Atkins CP, Brown GA, Matsuura JH, Clark MD, et al. Comparison between the transabdominal and retroperitoneal approaches for aortic reconstruction in patients at high risk. *J Vasc Surg*. 1999;30:400-6. [http://dx.doi.org/10.1016/s0741-5214\(99\)70066-2](http://dx.doi.org/10.1016/s0741-5214(99)70066-2).
6. Bevis PM, Windhaber RAJ, Lear PA, Poskitt KR, Earnshaw JJ, Mitchell DC. Randomized clinical trial of mesh versus sutured wound closure after open abdominal aortic aneurysm surgery. *Br J Surg*. 2010;97:1497-502. <http://dx.doi.org/10.1002/bjs.7137>.
7. Fassiadis N, Roidl M, Hennig M, South LM, Andrews SM. Randomized clinical trial of vertical or transverse laparotomy for abdominal aortic aneurysm repair. *Br J Surg*. 2005;92:1208-11. <http://dx.doi.org/10.1002/bjs.5140>.
8. Nicolajsen CW, Eldrup N. Abdominal closure and the risk of incisional hernia in aneurysm surgery – a systematic review and meta-analysis. *Eur J Vasc Endovasc Surg*. 2020;59:227-36. <http://dx.doi.org/10.1016/j.ejvs.2019.07.041>.
9. Sørensen LT, Hemmingsen UB, Kirkeby LT, Kallehave F, Jørgensen LN. Smoking is a risk factor for incisional hernia. *Arch Surg*. 2005;140:119. <http://dx.doi.org/10.1001/archsurg.140.2.119>.
10. Itatsu K, Yokoyama Y, Sugawara G, Kubota H, Tojima Y, Kurumiya Y, et al. Incidence of and risk factors for incisional hernia after abdominal surgery. *Br J Surg*. 2014;101:1439-47. <http://dx.doi.org/10.1002/bjs.9600>.
11. Meijer CA, Kokje VBC, van Tongeren RBM, Hamming JF, van Bockel JH, Möller GM, et al. An association between chronic obstructive pulmonary disease and abdominal aortic aneurysm beyond smoking. *Eur J Vasc Endovasc Surg*. 2012;44:153-7. <http://dx.doi.org/10.1016/j.ejvs.2012.05.016>.
12. Antoniou GA, Georgiadis GS, Antoniou SA, Granderath FA, Giannoukas AD, Lazarides MK. Abdominal aortic aneurysm and abdominal wall hernia as manifestations of a connective tissue disorder. *J Vasc Surg*. 2011;54:1175-81. <http://dx.doi.org/10.1016/j.jvs.2011.02.065>.
13. Hernández-Granados P, López-Cano M, Morales-Conde S, Muysoms F, García-Alamino J, Pereira-Rodríguez JA. Profilaxis de la hernia incisional y utilización de mallas. Revisión narrativa. *Cir Esp*. 2018;96:76-87. <http://dx.doi.org/10.1016/j.ciresp.2018.01.003>.
14. Henriksen NA, Helgstrand F, Vogt KC, Jørgensen LN, Bisgaard T. Risk factors for incisional hernia repair after aortic reconstructive surgery in a nationwide study. *J Vasc Surg*. 2013;57:1524-30. <http://dx.doi.org/10.1016/j.jvs.2012.11.119>.
15. Muysoms FE, Antoniou SA, Bury K, Campanelli G, Conze J, Cuccurullo D, et al. European Hernia Society guidelines on the closure of abdominal wall incisions. *Hernia*. 2015;19:1-24. <http://dx.doi.org/10.1007/s10029-014-1342-5>.
16. Muysoms FE, Miserez M, Berrevoet F, Campanelli G, Champault GG, Chelala E, et al. Classification of primary and incisional abdominal wall hernias. *Hernia*. 2009;13:407-14. <http://dx.doi.org/10.1007/s10029-009-0518-x>.
17. von Elm E, Altman DG, Egger M, Pocock SJ, Gøtzsche PC, Vandenbroucke JP. The Strengthening the Reporting of Observational Studies in Epidemiology (STROBE) statement: guidelines for reporting observational studies. *J Clin Epidemiol*. 2008;61:344-9. <http://dx.doi.org/10.1136/bmj.39335.541782.AD>.
18. Dindo D, Demartines N, Clavien P-A. Classification of surgical complications: a new proposal with evaluation in a cohort of 6336 patients and results of a survey. *Ann Surg*. 2004;240:205-13. <http://dx.doi.org/10.1097/01.sla.0000133083.54934.ae>.
19. Johnson B, Sharp R, Thursby P. Incisional hernias: incidence following abdominal aortic aneurysm repair. *J Cardiovasc Surg (Torino)*. 1995;36:487-90.
20. Muysoms FE, Detry O, Vierendeels T, Huyghe M, Miserez M, Ruppert M, et al. Prevention of incisional hernias by prophylactic mesh-augmented reinforcement of midline laparotomies for abdominal aortic aneurysm treatment: a randomized controlled trial. *Ann Surg*. 2016;263:638-45. <http://dx.doi.org/10.1097/SLA.0000000000001369>.
21. Sorensen LT, Karlsmark T, Gottrup F. Abstinence from smoking reduces incisional wound infection: a randomized controlled trial. *Ann Surg*. 2003;238:1-5. <http://dx.doi.org/10.1097/01.SLA.0000074980.39700.31>.
22. Kubasiak JC, Landin M, Schimpke S, Poirier J, Myers JA, Milikan KW, et al. The effect of tobacco use on outcomes of laparoscopic and open ventral hernia repairs: a review of the NSQIP dataset. *Surg Endosc*. 2017;31:2661-6. <http://dx.doi.org/10.1007/s00464-016-5280-4>.
23. Heller A, Westphal SE, Bartsch P, Haase M, Mertens PR. Chronic kidney disease is associated with high abdominal incisional hernia rates and wound healing disturbances. *Int Urol Nephrol*. 2014;46:1175-81. <http://dx.doi.org/10.1007/s11255-013-0565-1>.
24. Loewe P, Stefanidis I, Mertens PR, Chatzikyrikou C. Effects of various stages of nephropathy on wound healing in patients with diabetes: an observational cohort study encompassing 731 diabetics. *Int Urol Nephrol*. 2016;48:751-8. <http://dx.doi.org/10.1007/s11255-016-1229-8>.
25. Altieri MS, Yang J, Jones T, Voronina A, Zhang M, Kokkosis A, et al. Incidence of ventral hernia repair after open abdominal aortic aneurysm and open aortofemoral or aortoiliac bypass surgery: an analysis of 17,594 patients in the state of New York. *Am Surg*. 2018;84:1388-93. <http://dx.doi.org/10.1177/000313481808400857>.
26. Pereira JA, Montcusí B, López-Cano M, Hernández-Granados P, Fresno de Prado L. Factores de riesgo de mala evolución en la reparación de hernias incisionales: lecciones aprendidas del Registro Nacional de Hernia Incisional (EVEREG). *Cir Esp*. 2018;96:436-42. <http://dx.doi.org/10.1016/j.ciresp.2018.03.008>.
27. Indrakusuma R, Jalalzadeh H, van der Meij JE, Balm R, Koelemay MJW. Prophylactic mesh reinforcement versus sutured closure to prevent incisional hernias after open abdominal aortic aneurysm repair via midline laparotomy: a systematic review and meta-analysis. *Eur J Vasc Endovasc Surg*. 2018;56:120-8. <http://dx.doi.org/10.1016/j.ejvs.2018.03.021>.
28. Jairam AP, Timmermans L, Eker HH, Pierik REGJM, van Klaveren D, Steyerberg EW, et al. Prevention of incisional hernia with prophylactic onlay and sublay mesh reinforcement versus primary suture only in midline laparotomies (PRIMA): 2-year follow-up of a multicentre, double-blind, randomised controlled trial. *Lancet*. 2017;390:567-76. [http://dx.doi.org/10.1016/S0140-6736\(17\)31332-6](http://dx.doi.org/10.1016/S0140-6736(17)31332-6).
29. Bali C, Papakostas J, Georgiou G, Kouvelos G, Avgos S, Arnaoutoglou E, et al. A comparative study of sutured versus bovine pericardium mesh abdominal closure after open abdominal aortic aneurysm repair. *Hernia*. 2015;19:267-71. <http://dx.doi.org/10.1007/s10029-014-1262-4>.