

## REVIEW ARTICLE

# Impact of maternal overnutrition on the periconceptual period<sup>☆</sup>



Miguel Abraham Velázquez

Centre for Biological Sciences, University of Southampton, Southampton General Hospital, Southampton, United Kingdom

Received 3 December 2014; accepted 16 January 2015  
Available online 29 May 2015

### KEYWORDS

Maternal overnutrition;  
Periconceptual period;  
Oocyte;  
Embryo;  
Preimplantation period

**Abstract** Overnutrition may lead to obesity. Maternal obesity may affect fertility not only *via* anovulation, but also through direct effects on oocytes and preimplantation embryos, indicating that the periconceptual period is sensitive to conditions of overnutrition. The periconceptual period includes from folliculogenesis to implantation. Animal model studies suggest that oocytes derived from obese females usually have a small size and mitochondrial abnormalities. These disruptions are probably induced by changes in the components of the ovarian follicular fluid. Experimental evidence also suggests that obesity may affect the microenvironment in oviducts and uterus, resulting in development of preimplantation embryos with reduced cell numbers and upregulation of proinflammatory genes. However, further research is needed for in-depth characterization of the effects of maternal obesity during the periconceptual period.

© 2014 SEEN. Published by Elsevier España, S.L.U. All rights reserved.

### PALABRAS CLAVE

Sobrenutrición materna;  
Periodo de periconcepción;  
Ovocito;  
Embrión;  
Periodo de preimplantación

### Impacto de la sobrenutrición materna sobre el periodo de periconcepción

**Resumen** La sobrenutrición puede ocasionar obesidad. La obesidad materna puede afectar la fertilidad no solo a través de la anovulación, sino también por medio de efectos directos en ovocitos y en embriones en la fase de preimplantación, indicando que el periodo de periconcepción es sensible a condiciones de sobrenutrición. El periodo de periconcepción abarca desde la foliculogénesis hasta el momento de la implantación. Estudios en modelos animales indican que ovocitos derivados de hembras obesas usualmente muestran una talla pequeña y anomalías mitocondriales. Estas perturbaciones son probablemente inducidas a través de alteraciones en los componentes del fluido folicular ovárico. La evidencia experimental también indica que la

<sup>☆</sup> Please cite this article as: Velázquez MA. Impacto de la sobrenutrición materna sobre el periodo de periconcepción. Endocrinol Nutr. 2015;62:246–253.

E-mail addresses: [M.Velazquez@soton.ac.uk](mailto:M.Velazquez@soton.ac.uk), [lestaurus.18@hotmail.com](mailto:lestaurus.18@hotmail.com)

obesidad puede afectar el microambiente en oviductos y útero, lo cual conlleva al desarrollo de embriones en la fase de preimplantación con un número reducido de células y con una regulación ascendente de genes proinflamatorios. Sin embargo, se necesita más investigación para una caracterización a fondo de los efectos de la obesidad materna durante el periodo de periconcepción.

© 2014 SEEN. Publicado por Elsevier España, S.L.U. Todos los derechos reservados.

## Introduction

Overnutrition occurs when the bioavailability of one or more macronutrients and/or micronutrients exceeds the amounts needed for normal physiological and metabolic activity, usually leading to overweight or obesity.<sup>1</sup> Obesity is currently a public health problem worldwide.<sup>2-5</sup> The etiology of obesity is multifactorial,<sup>6-9</sup> and its pathophysiology has not been fully elucidated yet.<sup>10,11</sup> In addition to causing health problems associated with cardiovascular and metabolic diseases,<sup>5,12,13</sup> obesity may also cause fertility problems.<sup>14</sup> The available data suggest that the chance of spontaneous conception is decreased in obese females, even in the presence of menstrual cycles.<sup>15-19</sup> In addition, obese females in assisted reproduction programs usually have an unfavorable response to them. This has been suggested by three recent meta-analyses that examined more than 90 research articles related to the effect of a high body mass index on the results of assisted reproduction techniques.<sup>20</sup> In fact, most obese women with fertility problems are advised to lose weight before they undergo assisted reproduction programs.<sup>21</sup> In obese women, infertility is usually attributed to lack of ovulation.<sup>22,23</sup> However, several research lines have recently shown that both oocyte and embryonic development may also be negatively affected by obesity during the preimplantation period, suggesting that the periconceptual period is sensitive to overnutrition conditions. Generally speaking, the periconceptual period comprises from folliculogenesis to the time of implantation.<sup>1</sup> The purpose of this article is to provide an updated review of the effects of maternal overfeeding on the periconceptual period. Most of the information discussed comes from obesity models, the most commonly used in overnutrition studies.

## Effect of obesity on ovarian follicular development

The infertility seen in obese females is usually associated with anovulation, which is in turn often related to polycystic ovary syndrome.<sup>24,25</sup> In a mouse model of diet-induced obesity, lack of ovarian follicular development and ovulation was seen, suggesting the absence of estrous cycles.<sup>26</sup> Infertile mice with diet-induced obesity also had increased serum levels of metabolic hormones (*i.e.* insulin, leptin, and adiponectin) and metabolites (glucose).<sup>26</sup> The pathophysiology of anovulation under conditions of obesity is not fully

understood, but metabolic changes such as hyperinsulinemia and hyperleptinemia are known to be common characteristics in obese women with or without polycystic ovary syndrome.<sup>27,28</sup> Experiments in rats suggest that high leptin levels may prevent ovulation.<sup>29,30</sup> However, ovulation may occur under overnutrition conditions, because term pregnancies are common in obese women, including those with morbid obesity.<sup>1</sup> Ovarian folliculogenesis is a prerequisite for the ovulation process<sup>31</sup> which may be present in obese individuals, although it is deficient in most cases. For example, a low antral follicle count is an ovarian characteristic present in obese women<sup>32</sup> and in animals that are fed diets rich in lipids and cholesterol.<sup>33</sup> A low number of ovulations or a decreased ovarian follicle count has also been documented in obese genotypes such as obese New Zealand mice,<sup>34</sup> obese Zucker rats,<sup>35</sup> and Mediterranean Iberian pigs.<sup>36</sup> This deficient ovarian follicular activity is quite probably the reason for the low number of oocytes obtained from obese women on *in vitro* fertility treatments,<sup>37</sup> and may be related to the low antimüllerian hormone levels usually detected in obese women.<sup>38-40</sup> Other authors believe that serum antimüllerian hormone levels are not related to obesity.<sup>41</sup> However, it is known that leptin, which is usually increased in obese individuals, may suppress gene expression of the antimüllerian hormone in granulosa cells through the Janus kinase 2/signal transducer and activator of transcription 3 pathway.<sup>42</sup>

An additional characteristic in mice with diet-induced obesity is an increased proportion of apoptotic ovarian follicles,<sup>43</sup> especially in granulosa and cumulus cells.<sup>44</sup> In an overnutrition model of rabbits fed diets rich in lipids and cholesterol, increased ovarian follicular atresia was also found.<sup>33</sup> Similarly, obese Zucker rats (*i.e.* a genetic obesity model) also showed an increased proportion of atretic follicles together with increased insulin levels.<sup>35</sup> In this genetic obesity model, follicular atresia was associated with the accumulation of Forkhead box protein O1 in the nucleus of granulosa cells which showed signs of apoptosis.<sup>35</sup> Forkhead box protein O1 is a transcription factor that plays a primary role in energy metabolism and cell death, and is largely regulated by insulin.<sup>45,46</sup> This is an example where a nutritional mediator may directly affect ovarian cells. However, some nutritional mediators may indirectly affect ovarian follicular development. One such mediator is leptin, due to its relationship with vascular endothelial growth factor, which has a primary role in the regulation of ovarian angiogenesis.<sup>47</sup> In fact, protein expression of vascular endothelial growth factor in ovaries may be increased through intraperitoneal leptin injections in mice.<sup>48</sup> In humans, leptin concentrations

in ovarian follicular fluid may be negatively correlated to intrafollicular oxygen levels<sup>49</sup> and to blood flow in ovarian stroma.<sup>50</sup> As oxygenation levels in ovarian follicular fluid greatly depend on perifollicular vascular development,<sup>51</sup> it is thought that, in the presence of obesity, high leptin levels may interfere with the supply of oxygen and regulatory elements critical for folliculogenesis.<sup>25</sup> However, this hypothesis needs to be verified in experimental studies.

Although the information available suggests that ovarian follicular development is impaired in overnutrition, more detailed studies addressing the effect of obesity on ovarian folliculogenesis are needed. It is important to analyze the ovarian microenvironment (e.g. metabolic and proteomic), including intrafollicular fluid and granulosa cells, because these will provide oocyte competency markers that could have clinical application in reproductive medicine.

### Effect of obesity on oocyte developmental capacity

From the periconceptual viewpoint, oocyte developmental capacity refers to the ability of the oocyte to mature during the last stages of folliculogenesis, achieve the fertilization process, and develop up to the blastocyst stage.<sup>1</sup> Mice with diet-induced obesity showed a decreased oocyte count with rupture of the germinal vesicle, which suggests a negative effect of obesity on oocyte maturation.<sup>43</sup> Small oocytes are also present in obese women<sup>52</sup> and mice with diet-induced obesity.<sup>43</sup> If oocytes do not reach an adequate size, meiotic maturation is affected, and the polyspermic fertilization rate may be increased.<sup>53</sup>

The fertilization process is also affected by obesity, because superovulated mice fed a high-fat diet showed a low fertilization rate.<sup>44</sup> In a bovine model, the proportion of unfertilized oocytes increased in superovulated obese cows.<sup>54</sup> Similarly, fertilization failure rates increased in obese women subject to *in vitro* fertilization.<sup>55</sup> In the latter study, fertilization failure was associated with abnormal meiotic spindles and chromosomal malalignment.<sup>55</sup> In fact, mice with diet-induced obesity have an increased aneuploid oocyte rate, combined with an increased rate of morphologically abnormal meiotic spindles and misaligned chromosomes.<sup>56</sup>

Obesity is partially associated with high lipid consumption, and most animal studies aimed at elucidating the pathophysiology of obesity have used diets with high-fat contents.<sup>57</sup> High-fat diets increase lipid content in oocytes, and an excessive increase in lipids is considered a biomarker of lipotoxicity.<sup>44</sup> High lipid contents in oocytes are a characteristic usually found in obese animals with reproductive problems.<sup>44,58</sup> In fact, *in vitro* exposure of mouse oocytes to human follicular fluid with high lipid concentrations resulted in a negative effect on oocyte nuclear maturation.<sup>59</sup> Experiments in mice suggest that such oocyte lipotoxicity is associated with an impaired expression of stress marker genes in endoplasmic reticulum, such as activating transcription factor 4 (ATF4) and heat shock 70-kDa protein 5 (glucose-regulated protein, 78 kDa).<sup>44</sup> In the latter study, the expression of both genes increased in cumulus–oocyte complexes, while only ATF4 increased in granulosa cells.<sup>44</sup>

Granulosa cells from obese women also showed increased ATF4 expression.<sup>44</sup>

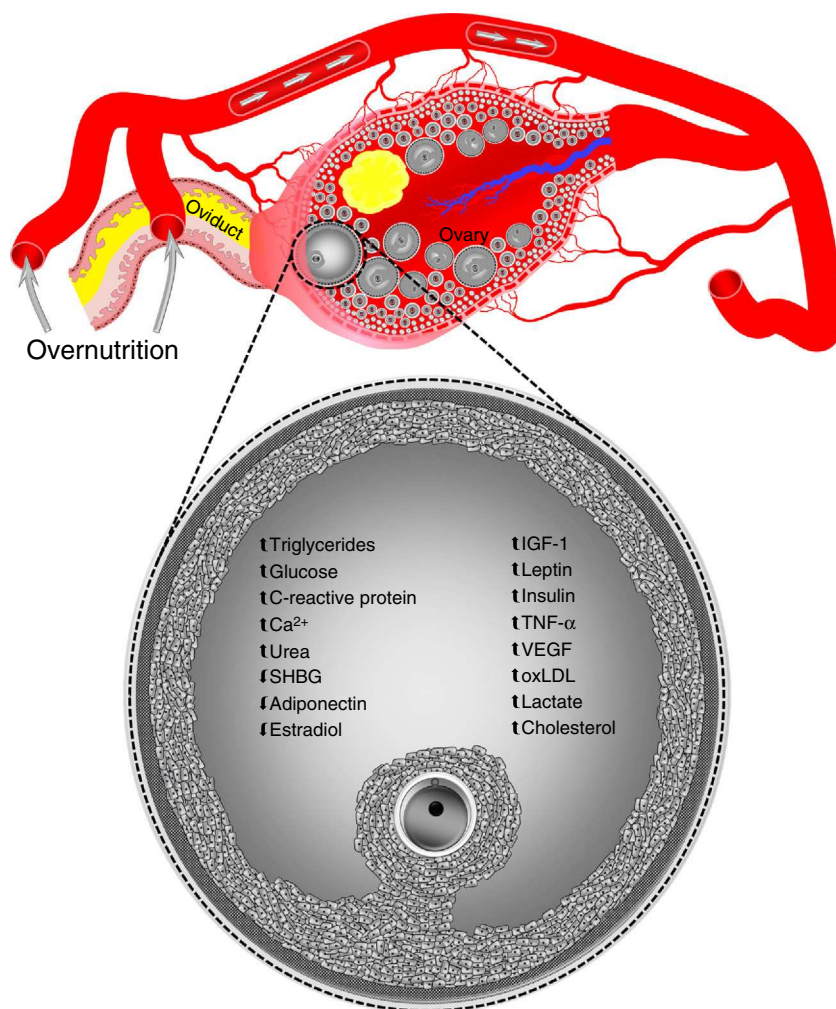
On the other hand, oocytes and zygotes from mice with diet-induced obesity show a greater production of reactive oxygen species and a more oxidized redox state, as well as abnormal mitochondrial localization.<sup>60</sup> Other mitochondrial dysfunctions found in oocytes, but not zygotes, from mice with diet induced obesity include an increased number of copies of mitochondrial DNA and the upregulation of nuclear genes involved in mitochondrial DNA replication and transcription.<sup>60</sup> It has been suggested that mitochondrial DNA degradation and replication occurring immediately after fertilization in two-cell zygotes and embryos could explain why altered mitochondrial DNA levels are normalized in zygotes from obese mice.<sup>60</sup> In addition, because of the degradation of maternal transcripts that precedes the activation of embryonic genome, the normalization of altered nuclear gene levels associated with mitochondrial biogenesis in zygotes from obese animals reflects the global destruction of maternal messenger RNA during the maternal–embryonic transition.<sup>60</sup> However, this is not sufficient to counteract the harmful effects of obesity on oocyte developmental capacity. For example, the *in vitro* development of zygotes from obese mice is known to be affected, resulting in a decreased blastocyst formation.<sup>61,62</sup> Similarly, oocytes aspirated by transvaginal ultrasonography from overfed heifers showed a poor development in *in vitro* fertilization programs associated with hyperinsulinemia in donor animals.<sup>63,64</sup> Such elevated insulin levels may even be similar to those reported in women with polycystic ovary syndrome.<sup>63</sup> *In vivo* embryo formation is also reduced in superovulated obese cattle and has been related to high blood levels of insulin<sup>65</sup> and insulin-like growth factor 1 (IGF-1).<sup>54</sup> Changes in oocytes are induced through modifications in the concentrations of the components of ovarian follicular fluid during overnutrition episodes (Fig. 1).<sup>1</sup> However, overnutrition not only affects the intrafollicular microenvironment, but also the reproductive tract microenvironment.

### Effect of obesity on the reproductive tract

The oviductal microenvironment may be affected by obesity. For example, it is known that leptin concentrations in oviductal luminal fluid are increased in obese mice.<sup>60</sup> *In vitro* studies in mice have shown that a high leptin concentration in embryonic culture medium may decrease blastocyst formation<sup>66</sup> and induce DNA fragmentation in the resulting embryos<sup>67</sup> (Fig. 2).

Colony-stimulating factor 2 (CSF2 [granulocyte–macrophage]) is an important regulator of early embryonic development, and both its gene and protein expression in the oviduct are decreased in obese cows.<sup>68</sup> The relevance of these results is not clear, because decreased CSF2 expression was mainly seen in the oviductal ampulla<sup>68</sup> and this structure is more relevant for the fertilization process than for the first cell divisions of the embryo.<sup>69</sup> No literature reports suggesting an effect of CSF2 on the fertilization process are available.

The uterus may also be affected by overfeeding. The low embryo production reported in obese cows is associated with increased IGF-1 levels in uterine luminal fluid.<sup>54</sup>



**Figure 1** Overnutrition may alter concentrations of the components of ovarian follicular fluid. Data taken from humans, sheep, cattle, and pigs. Ca<sup>2+</sup>, calcium; IGF-1, insulin-like growth factor 1; oxLDL, oxidized low-density lipoprotein; SHBG, sex hormone-binding globulin; TNF-α, tumor necrosis factor-alpha; VEGF, vascular endothelial growth factor. Blood vessels, ovary, ovarian follicles, and oviduct are not drawn to scale.

Adapted from Velazquez and Fleming.<sup>1</sup>

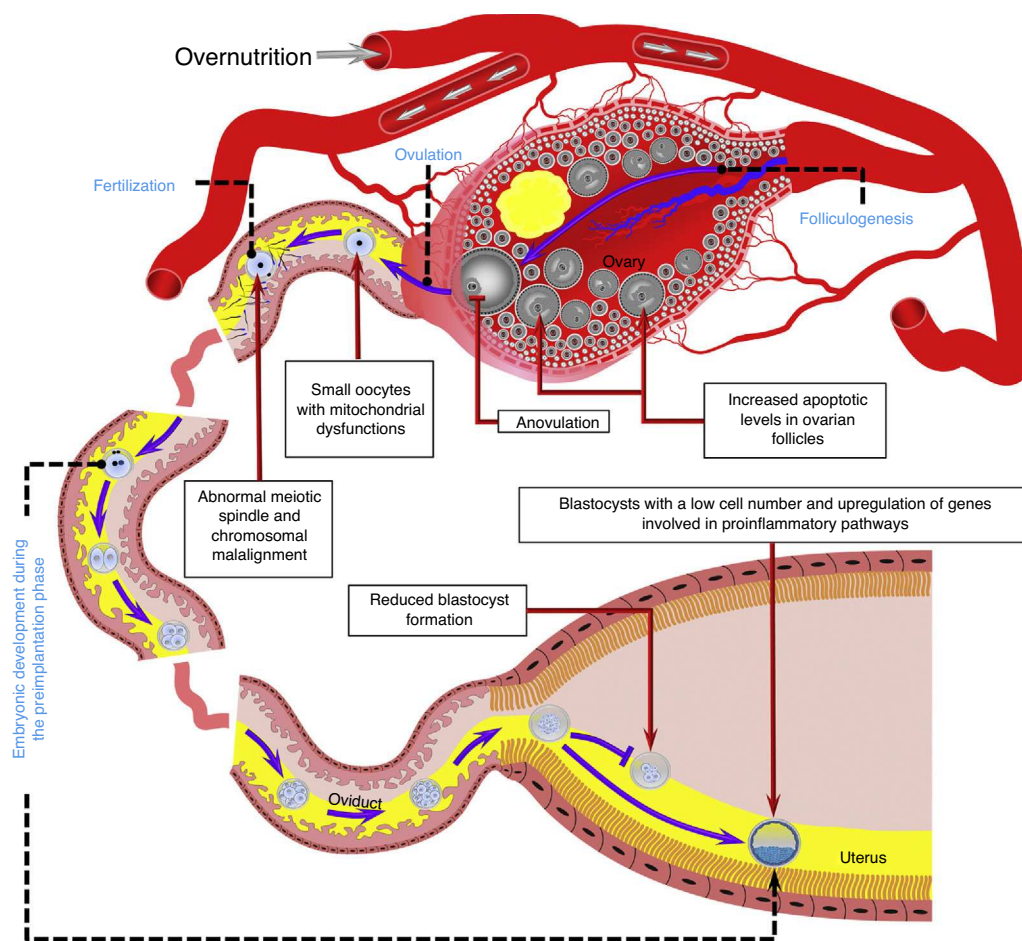
*In vitro* studies suggest that high IGF-1 concentrations may increase apoptotic levels and alter cell allocation in bovine blastocysts.<sup>70</sup> Such changes include the formation of blastocysts with excess cell proliferation in the inner cell mass, which may increase the risk of early pregnancy loss.<sup>71</sup> However, the latter most probably occurs during short-term overnutrition, in which obesity does not develop and IGF-1 levels are not chronically increased, because under obesity conditions the number of cells in blastocysts does not increase, but rather decreases.<sup>54</sup> The low number of cells in bovine embryos is associated with reduced protein expression of the IGF-1 receptor.<sup>54</sup> This decrease in protein expression in the IGF-1 receptor has also been reported in blastocysts from mice with diet-induced obesity.<sup>43</sup>

Experiments in rats have shown that obesity induces an extensive upregulation of genes involved in proinflammatory pathways in the uterus.<sup>72</sup> This proinflammatory reaction induced by obesity also occurs in the blastocyst and is associated with lipid accumulation in the uterus and the blastocyst.<sup>72</sup> As stated above, hyperlipidemia is considered

an indicator of lipotoxicity, and an increase in the lipid content in bovine embryos results in the embryo being given a dark appearance, and embryos with a dark appearance may decrease the pregnancy rate in embryo transfer programs in cattle.<sup>73</sup>

Controversy exists as to the significance of endometrial receptiveness in obese women, because in oocyte donation models some authors have reported a negative impact on the results of *in vitro* fertilization,<sup>74</sup> while other authors have found no effect.<sup>75</sup> Animal models, however, show that obesity is harmful for the uterine environment. It should be taken into account that such studies were retrospective analysis conducted on data routinely collected from women with fertility problems. This type of retrospective analysis has been criticized based on evidence that it may provide implausible results.<sup>76</sup> One example is the presumed positive effect potentially exerted by male obesity on implantation rates in *in vitro* fertilization programs.<sup>77</sup> In that study, data from 700,000 *in vitro* fertilization cycles performed in 120 assisted reproduction clinics were used.<sup>77</sup>





**Figure 2** Overnutrition may negatively affect several reproductive processes during the periconceptual period, including folliculogenesis, ovulation, oocyte quality, and fertilization, as well as embryo development in the preimplantation phase. Model based on data collected from humans,<sup>32,52,55</sup> ruminants,<sup>54,63,65</sup> and rodents.<sup>43,44,56,60,72</sup> The reproductive tract is representative of ruminant and rodent species. Blood vessels, gametes, embryos, and reproductive structures are not drawn to scale.

These results were in direct contrast with the negative impact of obesity on male fertility and the results of *in vitro* fertilization widely reported in experimental studies conducted in humans and animals.<sup>78–85</sup>

The information discussed in this article suggests that oviductal and uterine microenvironments are affected by overnutrition, which makes the notion that the harmful effects of overfeeding may be directly exerted on the reproductive tract likely. Additional studies (*i.e.* metabolomic and proteomic) are needed for in-depth characterization of the effects of overnutrition on the reproductive tract.

## Conclusions

Long-term overnutrition normally leads to obesity. Obesity may affect reproductive capacity not only through anovulation, but also through changes in the ovary and reproductive tract (Fig. 2). Changes in ovarian follicular growth occurring in obesity are very likely to result in ovulation of oocytes with a deficient developmental capacity. Information derived from animal models suggests that oviductal and uterine microenvironments are also affected by overnutrition. These changes may affect the embryo in

the preimplantation phase, with a negative impact on the chances of a successful pregnancy. Further experimental studies are however required for in-depth characterization (*i.e.* metabolic, molecular, and cellular effects) of the effects of overfeeding during the periconceptual period. Such studies would provide information relevant for the development of preventive strategies that increase the probability of successful pregnancy in obese individuals. This type of research is however difficult to perform in humans, because studies on this subject are usually conducted on couples with fertility problems. Animal models are therefore needed in order to perform such detailed research.

## Conflicts of interest

The author states that he has no conflicts of interest.

## References

1. Velazquez MA, Fleming TP. Oogenesis. In: Cotichio G, Albertini DF, De Santis L, editors. *Maternal diet, oocyte nutrition and metabolism, and offspring health*. 1st ed. London: Springer; 2013. p. 329–51.

2. Wang YC, McPherson K, Marsh T, Gortmaker SL, Brown M. Health and economic burden of the projected obesity trends in the USA and the UK. *Lancet*. 2011;378:815–25.
3. Webber L, Kilpi F, Marsh T, Rtelveladze K, Brown M, McPherson K. High rates of obesity and non-communicable diseases predicted across Latin America. *PLoS ONE*. 2012;7:e39589.
4. Webber L, Kilpi F, Marsh T, Rtelveladze K, McPherson K, Brown M. Modelling obesity trends and related diseases in Eastern Europe. *Obes Rev*. 2012;13:744–51.
5. Barrera-Cruz A, Rodríguez-González A, Molina-Ayala MA. Escenario actual de la obesidad en México. *Rev Med Inst Mex Seguro Soc*. 2013;51:292–9.
6. Bray GA, Champagne CM. Beyond energy balance: there is more to obesity than kilocalories. *J Am Diet Assoc*. 2005;105 Suppl. 1:S17–23.
7. Mathes WF, Kelly SA, Pomp D. Advances in comparative genetics: influence of genetics on obesity. *Br J Nutr*. 2011;106 Suppl. 1:S1–10.
8. Selassie M, Sinha AC. The epidemiology and aetiology of obesity: a global challenge. *Best Pract Res Clin Anaesthesiol*. 2011;25:1–9.
9. Swinburn BA, Sacks G, Hall KD, McPherson K, Finegood DT, Moodie ML, et al. The global obesity pandemic: shaped by global drivers and local environments. *Lancet*. 2011;378:804–14.
10. Hernández-Jiménez S. Fisiopatología de la obesidad. *Gac Méd Méx*. 2004;140 Suppl. 2:S27–32.
11. Ayala YR, Ayala AR. Adiposidad, inflamación e infertilidad. *Rev Mex Reprod*. 2009;2:57–62.
12. Cabrerizo L, Rubio MA, Ballesteros MD, Moreno-Lopera C. Complicaciones asociadas a la obesidad. *Rev Esp Nutr Comunitaria*. 2008;14:156–62.
13. Contreras-Leal EA, Santiago-García J. Obesidad, síndrome metabólico y su impacto en las enfermedades cardiovasculares. *Rev Biomed*. 2011;22:103–15.
14. Romero RR, Romero GG, Abortos MI, Medina SHG. Factores de riesgo asociados con la infertilidad femenina. *Ginecol Obstet Mex*. 2008;76:717–21.
15. Gesink Law DC, Macleahose RF, Longnecker MP. Obesity and time to pregnancy. *Hum Reprod*. 2007;22:414–20.
16. Ramlau-Hansen CH, Thulstrup AM, Nohr EA, Bonde JP, Sørensen TI, Olsen J. Subfecundity in overweight and obese couples. *Hum Reprod*. 2007;22:1634–7.
17. van der Steeg JW, Steures P, Eijkemans MJ, Habbema JD, Hompes PG, Burggraaf JM, et al. Obesity affects spontaneous pregnancy chances in subfertile, ovulatory women. *Hum Reprod*. 2008;23:324–8.
18. Wise LA, Rothman KJ, Mikkelsen EM, Sørensen HT, Riis A, Hatch EE. An Internet-based prospective study of body size and time-to-pregnancy. *Hum Reprod*. 2010;25:253–64.
19. Jacobsen BK, Knutsen SF, Oda K, Fraser GE. Obesity at age 20 and the risk of miscarriages, irregular periods and reported problems of becoming pregnant: the Adventist Health Study-2. *Eur J Epidemiol*. 2012;27:923–31.
20. Pinborg A, Petersen GL, Schmidt L. Recent insights into the influence of female bodyweight on assisted reproductive technology outcomes. *Women's Health*. 2013;9:1–4.
21. Martínez MRM, Domínguez MA, López-Pardo MM. Influencia de sobrepeso y obesidad sobre la infertilidad: plan de cuidados y programa educacional. *Nutr Clin Diet Hosp*. 2011;31:28–38.
22. Ferrando M, Bellver J. Impacto de la obesidad sobre la reproducción humana natural y asistida. *Rev Esp Obes*. 2008;6:302–16.
23. Federación Mexicana de Colegios de Obstetricia y Ginecología. Prevención de la infertilidad. *Ginecol Obstet Mex*. 2011;79:659–73.
24. Escobar-Morreale HF, San Millán JL. Abdominal adiposity and the polycystic ovary syndrome. *Trends Endocrinol Metab*. 2007;18:266–72.
25. Brewer CJ, Balen AH. The adverse effects of obesity on conception and implantation. *Reproduction*. 2010;140:347–64.
26. Bermejo-Alvarez P, Rosenfeld CS, Roberts RM. Effect of maternal obesity on estrous cyclicity, embryo development and blastocyst gene expression in a mouse model. *Hum Reprod*. 2012;27:3513–22.
27. Vivas CA, Castaño-Trujillo P, García-Trujillo G, Ospina-Gutiérrez ML. Síndrome de ovario poliquístico. Fisiopatología en mujeres obesas y no obesas. *Rev CES Med*. 2011;25:169–80.
28. Chakrabarti J. Serum leptin level in women with polycystic ovary syndrome: correlation with adiposity, insulin, and circulating testosterone. *Ann Med Health Sci Res*. 2013;3:191–6.
29. Duggal PS, Van Der Hoek KH, Milner CR, Ryan NK, Armstrong DT, Magoffin DA, et al. The in vivo and in vitro effects of exogenous leptin on ovulation in the rat. *Endocrinology*. 2000;141:1971–6.
30. Ricci AG, di Yorio MP, Faletti AG. Inhibitory effect of leptin on the rat ovary during the ovulatory process. *Reproduction*. 2006;132:771–80.
31. De Tomasi JB, Crespo AA, Crespo AF. Desarrollo folicular en el ovario. *Rev Sal Quintana Roo*. 2012;5:12–8.
32. Malhotra N, Bahadur A, Singh N, Kalaivani M, Mittal S. Does obesity compromise ovarian reserve markers? A clinician's perspective. *Arch Gynecol Obstet*. 2013;287:161–6.
33. Cordier AG, Léveillé P, Dupont C, Tarrade A, Picone O, Larcher T, et al. Dietary lipid and cholesterol induce ovarian dysfunction and abnormal LH response to stimulation in rabbits. *PLOS ONE*. 2013;8:e63101.
34. Radavelli-Bagatini S, Blair AR, Proietto J, Spritzer PM, Andrikopoulos S. The New Zealand obese mouse model of obesity insulin resistance and poor breeding performance: evaluation of ovarian structure and function. *J Endocrinol*. 2011;209:307–15.
35. Kajihara T, Uchino S, Suzuki M, Itakura A, Brosens JJ, Ishihara O. Increased ovarian follicle atresia in obese Zucker rats is associated with enhanced expression of the forkhead transcription factor FOXO1. *Med Mol Morphol*. 2009;42:216–21.
36. Gonzalez-Añover P, Encinas T, Torres-Rovira L, Pallares P, Muñoz-Frutos J, Gomez-Izquierdo E, et al. Ovulation rate, embryo mortality and intrauterine growth retardation in obese swine with gene polymorphisms for leptin and melanocortin receptors. *Theriogenology*. 2011;75:34–41.
37. Robker RL, Akison LK, Bennett BD, Thrupp PN, Chura LR, Russell DL, et al. Obese women exhibit differences in ovarian metabolites, hormones, and gene expression compared with moderate-weight women. *J Clin Endocrinol Metab*. 2009;94:1533–40.
38. Freeman EW, Gracia CR, Sammel MD, Lin H, Lim LC, Strauss JF 3rd. Association of anti-mullerian hormone levels with obesity in late reproductive-age women. *Fertil Steril*. 2007;87:101–6.
39. Piouka A, Farmakiotis D, Katsikis I, Macut D, Gerou S, Panidis D. Anti-mullerian hormone levels reflect severity of PCOS but are negatively influenced by obesity: relationship with increased luteinizing hormone levels. *Am J Physiol Endocrinol Metab*. 2009;296:E238–43.
40. Van Dorp W, Blijdorp K, Laven JS, Pieters R, Visser JA, van der Lely AJ, et al. Decreased ovarian function is associated with obesity in very long-term female survivors of childhood cancer. *Eur J Endocrinol*. 2013;168:905–12.
41. Sahmay S, Usta T, Erel CT, Imamoğlu M, Küçük M, Atakul N, et al. Is there any correlation between AMH and obesity in premenopausal women? *Arch Gynecol Obstet*. 2012;286:661–5.
42. Merhi Z, Buyuk E, Berger DS, Zapantis A, Israel DD, Chua S Jr, et al. Leptin suppresses anti-mullerian hormone gene expression through the JAK2/STAT3 pathway in luteinized granulosa cells of women undergoing IVF. *Hum Reprod*. 2013;28:1661–9.
43. Jungheim ES, Schoeller EL, Marquard KL, Loudon ED, Schaffer JE, Moley KH. Diet-induced obesity model: abnormal

- ocytes and persistent growth abnormalities in the offspring. *Endocrinology*. 2010;151:4039–46.
44. Wu LL, Dunning KR, Yang X, Russell DL, Lane M, Norman RJ, et al. High-fat diet causes lipotoxicity responses in cumulus–oocyte complexes and decreased fertilization rates. *Endocrinology*. 2010;151:5438–45.
  45. Kousteni S. FoxO1, the transcriptional chief of staff of energy metabolism. *Bone*. 2012;50:437–43.
  46. Puthanveetil P, Wan A, Rodrigues B. FoxO1 is crucial for sustaining cardiomyocyte metabolism and cell survival. *Cardiovasc Res*. 2013;97:393–403.
  47. Kaczmarek MM, Schams D, Ziecik AJ. Role of vascular endothelial growth factor in ovarian physiology – an overview. *Reprod Biol*. 2005;5:111–36.
  48. Joo JK, Joo BS, Kim SC, Choi JR, Park SH, Lee KS. Role of leptin in improvement of oocyte quality by regulation of ovarian angiogenesis. *Anim Reprod Sci*. 2010;119:329–34.
  49. Barroso G, Barrionuevo M, Rao P, Graham L, Danforth D, Huey S, et al. Vascular endothelial growth factor, nitric oxide, and leptin follicular fluid levels correlate negatively with embryo quality in IVF patients. *Fertil Steril*. 1999;72:1024–6.
  50. Wu MH, Tsai SJ, Pan HA, Hsiao KY, Chang FM. Three-dimensional power Doppler imaging of ovarian stromal blood flow in women with endometriosis undergoing in vitro fertilization. *Ultrasound Obstet Gynecol*. 2003;21:480–5.
  51. Van Blerkom J. Intrafollicular influences on human oocyte developmental competence: perifollicular vascularity, oocyte metabolism and mitochondrial function. *Hum Reprod*. 2000;15 Suppl. 2:173–88.
  52. Marquard KL, Stephens SM, Jungheim ES, Ratts VS, Odem RR, Lanzendorf S, et al. Polycystic ovary syndrome and maternal obesity affect oocyte size in *in vitro* fertilization/intracytoplasmic sperm injection cycles. *Fertil Steril*. 2011;95:2146–9.
  53. Velazquez MA, Zaraza J, Oropeza A, Webb R, Niemann H. The role of IGF1 in the in vivo production of bovine embryos from superovulated donors. *Reproduction*. 2009;137:161–80.
  54. Velazquez MA, Hadelér KG, Herrmann D, Kues WA, Ulbrich SE, Meyer HH, et al. In vivo oocyte developmental competence is reduced in lean but not in obese superovulated dairy cows after intraovarian administration of IGF1. *Reproduction*. 2011;142:41–52.
  55. Machtiger R, Combelles CM, Missmer SA, Correia KF, Fox JH, Racowsky C. The association between severe obesity and characteristics of failed fertilized oocytes. *Hum Reprod*. 2012;27:3198–207.
  56. Luzzo KM, Wang Q, Purcell SH, Chi M, Jimenez PT, Grindler N, et al. High fat diet induced developmental defects in the mouse: oocyte meiotic aneuploidy and fetal growth retardation/brain defects. *PLoS ONE*. 2012;7:e49217.
  57. Hariri N, Thibault L. High-fat diet-induced obesity in animal models. *Nutr Res Rev*. 2010;23:270–99.
  58. Awasthi H, Saravia F, Rodríguez-Martínez H, Båge R. Do cytoplasmic lipid droplets accumulate in immature oocytes from over-conditioned repeat breeder dairy heifers? *Reprod Domest Anim*. 2010;45:e194–8.
  59. Yang X, Wu LL, Chura LR, Liang X, Lane M, Norman RJ, et al. Exposure to lipid-rich follicular fluid is associated with endoplasmic reticulum stress and impaired oocyte maturation in cumulus–oocyte complexes. *Fertil Steril*. 2012;97:1438–43.
  60. Igosheva N, Abramov AY, Poston L, Eckert JJ, Fleming TP, Duchon MR, et al. Maternal diet-induced obesity alters mitochondrial activity and redox status in mouse oocytes and zygotes. *PLoS ONE*. 2010;5:e10074.
  61. Minge CE, Bennett BD, Norman RJ, Robker RL. Peroxisome proliferator-activated receptor-gamma agonist rosiglitazone reverses the adverse effects of diet-induced obesity on oocyte quality. *Endocrinology*. 2008;149:2646–56.
  62. Ma W, Yang X, Liang X. Obesity does not aggravate vitrification injury in mouse embryos: a prospective study. *Reprod Biol Endocrinol*. 2012;10:68.
  63. Adamiak SJ, Mackie K, Watt RG, Webb R, Sinclair KD. Impact of nutrition on oocyte quality: cumulative effects of body composition and diet leading to hyperinsulinemia in cattle. *Biol Reprod*. 2005;73:918–26.
  64. Freret S, Grimard B, Ponter AA, Joly C, Ponsart C, Humblot P. Reduction of body-weight gain enhances in vitro embryo production in overfed superovulated dairy heifers. *Reproduction*. 2006;131:783–94.
  65. Kadokawa H, Tameoka N, Uchiza M, Kimura Y, Yonai M. Short communication: a field study on the relationship between body condition and embryo production in superovulated yearling heifers. *J Dairy Sci*. 2008;91:1087–91.
  66. Herrid M, Nguyen VL, Hinch G, McFarlane JR. Leptin has concentration and stage-dependent effects on embryonic development in vitro. *Reproduction*. 2006;132:247–56.
  67. Fedorcák P, Storeng R. Effects of leptin and leukemia inhibitory factor on preimplantation development and stat3 signaling of mouse embryos in vitro. *Biol Reprod*. 2003;69:1531–8.
  68. Nahar A, Maki S, Kadokawa H. Suppressed expression of granulocyte macrophage colony-stimulating factor in oviduct ampullae of obese cows. *Anim Reprod Sci*. 2013;139:1–8.
  69. Coy P, García-Vázquez FA, Visconti PE, Avilés M. Roles of the oviduct in mammalian fertilization. *Reproduction*. 2012;144:649–60.
  70. Velazquez MA, Hermann D, Kues WA, Niemann H. Increased apoptosis in bovine blastocysts exposed to high levels of IGF1 is not associated with downregulation of the IGF1 receptor. *Reproduction*. 2011;141:91–103.
  71. Velazquez MA, Hadelér K-G, Herrmann D, Kues WA, Rémy B, Beckers JF, et al. In vivo oocyte IGF-1 priming increases inner cell mass proliferation of in vitro-formed bovine blastocysts. *Theriogenology*. 2012;78:517–27.
  72. Shankar K, Zhong Y, Kang P, Lau F, Blackburn ML, Chen JR, et al. Maternal obesity promotes a proinflammatory signature in rat uterus and blastocyst. *Endocrinology*. 2011;152:4158–70.
  73. Velazquez MA. The role of nutritional supplementation on the outcome of superovulation in cattle. *Anim Reprod Sci*. 2011;126:1–10.
  74. Bellver J, Pellicer A, García-Velasco JA, Ballesteros A, Remohí J, Meseguer M. Obesity reduces uterine receptivity: clinical experience from 9587 first cycles of ovum donation with normal weight donors. *Fertil Steril*. 2013;100:1050–8.
  75. Jungheim ES, Schon SB, Schulte MB, Deugarte DA, Fowler SA, Tuuli MG. IVF outcomes in obese donor oocyte recipients: a systematic review and meta-analysis. *Hum Reprod*. 2013;28:2720–7.
  76. Austin PC, Mamdani MM, Juurlink DN, Hux JE. Testing multiple statistical hypotheses resulted in spurious associations: a study of astrological signs and health. *J Clin Epidemiol*. 2006;59:964–9.
  77. Kupka MS, Gnoth C, Buehler K, Dahncke W, Kruessel JS. Impact of female and male obesity on IVF/ICSI: results of 700,000 ART-cycles in Germany. *Gynecol Endocrinol*. 2011;27:144–9.
  78. Binder NK, Hannan NJ, Gardner DK. Paternal diet-induced obesity retards early mouse embryo development, mitochondrial activity and pregnancy health. *PLoS ONE*. 2012;7:e52304.
  79. Binder NK, Mitchell M, Gardner DK. Parental diet-induced obesity leads to retarded early mouse embryo development and altered carbohydrate utilisation by the blastocyst. *Reprod Fertil Dev*. 2012;24:804–12.
  80. Mitchell M, Bakos HW, Lane M. Paternal diet-induced obesity impairs embryo development and implantation in the mouse. *Fertil Steril*. 2011;95:1349–53.
  81. Palmer NO, Bakos HW, Owens JA, Setchell BP, Lane M. Diet and exercise in an obese mouse fed a high-fat diet improve

- metabolic health and reverse perturbed sperm function. *Am J Physiol Endocrinol Metab.* 2012;302:E768–80.
82. Dupont C, Faure C, Sermondade N, Boubaya M, Eustache F, Clément P, et al. Obesity leads to higher risk of sperm DNA damage in infertile patients. *Asian J Androl.* 2013;15:622–5.
83. Hajshafiha M, Ghareaghaji R, Salemi S, Sadegh-Asadi N, Sadeghi-Bazargani H. Association of body mass index with some fertility markers among male partners of infertile couples. *Int J Gen Med.* 2013;6:447–51.
84. McPherson NO, Bakos HW, Owens JA, Setchell BP, Lane M. Improving metabolic health in obese male mice via diet and exercise restores embryo development and fetal growth. *PLOS ONE.* 2013;8:e71459.
85. Merhi ZO, Keltz J, Zapantis A, Younger J, Berger D, Lieman HJ, et al. Male adiposity impairs clinical pregnancy rate by in vitro fertilization without affecting day 3 embryo quality. *Obesity.* 2013;21:1608–12.