



## ORIGINAL ARTICLE

# Dosimetry of large electron beam fields and treatment protocol for mycosis fungoides using the total skin irradiation technique



M.A. Pagnan-González<sup>a</sup>, J.O. Hernández-Oviedo<sup>b</sup>, E. Mitsoura<sup>a,\*</sup>

<sup>a</sup> Facultad de Medicina, Universidad Autónoma del Estado de México, Toluca, Estado de México, México

<sup>b</sup> Unidad de Radioterapia, Centro de Cáncer, The American British Cowdray Medical Center, Mexico City, Federal District, Mexico

Received 13 October 2014; accepted 21 October 2014

Available online 26 March 2015

### KEYWORDS

Total skin irradiation;  
Electrons;  
Mycosis fungoides

### Abstract

**Introduction:** Total Skin Electron Beam Therapy (TSEBT) is a technique used in the treatment of superficial skin diseases, such as cutaneous lymphomas. Although it has demonstrated its effectiveness through several clinical studies of the advanced stages of mycosis fungoides, it is not available in most cancer centers in Mexico, because it requires large electron fields in order to cover the entire body.

**Objective:** In order to obtain large electron fields for TSEBT, conventional treatment distances are not sufficient. This has led to the need for an electron beam with special features and calibration at a distance of 500 cm or more, as well as the need to create a treatment protocol to develop the TSEBT programs in Mexico.

**Materials and methods:** The ELEKTA SYNERGY Linear Accelerator was selected with a 6 MeV energy at a Source Skin Distance (SSD) of 500 cm, in high dose rate mode (1,000 MU=100 Gy), using a cone of 40×40 cm<sup>2</sup> and the gantry angled to 90°, obtaining a large electron field of 200×100 cm<sup>2</sup> useful area. Routine calibration was performed at a Z<sub>ref</sub>=1.40 cm and an SSD of 100 cm with a 40×40 cm<sup>2</sup> cone using a plane-parallel ionization chamber and electrometer (Scandotronic Wellhofer model PPC05 FOCUS) and a water phantom. The same procedure for the absolute dose rate determination was also performed in treatment conditions (500 cm). For the beam characterization in terms of Percentage Depth Dose (PDD) and beam profiles, Radiochromic Gafchromic® EBT2 film (RCF) was used, after being calibrated for electrons in a solid water phantom (Scanditronix Wellhöfer) at a 1.4 cm depth and Source Axis Distance (SAD) of 100 cm and 500 cm, in order to acquire the equation relating the dose response with optical density. PDD was obtained at 0, 1, 1.2, 1.4, 1.5, 2, 3, 4, 5, 6, 7, 8 and 9 cm depths in the phantom. Spatial dose distribution was obtained by placing 3×3 cm<sup>2</sup> samples of RCF on an acrylic screen situated in front of the patient (for the purpose of obtaining maximum absorbed dose on the skin). Lastly, a treatment protocol was proposed.

\* Corresponding author: Coordinación del Centro de Investigación y Estudios Avanzados en Ciencias de la Salud, Facultad de Medicina, Universidad Autónoma del Estado de México, Paseo Tollocan S/N, esquina con Jesús Carranza, Colonia Moderna de la Cruz, C.P. 50180, Toluca, Estado de México, México.

E-mail address: [meleni@uaemex.mx](mailto:meleni@uaemex.mx) (E. Mitsoura).

**Results:** An effective maximum dose depth ( $Z_{ref}$ ) for electrons of  $1.4 \pm 0.05$  cm was obtained according to the relative spatial dose distribution and the percentage depth dose for a SSD of  $500 \pm 0.5$  cm, over an area of  $200 \times 100$  cm<sup>2</sup>. Horizontal and vertical beam profiles were plotted, showing a horizontal symmetry of  $\pm 0.35\%$ , horizontal flatness of  $\pm 3.62\%$ , vertical symmetry of  $\pm 2.1\%$ , and vertical flatness of  $\pm 14.2\%$ .

**Conclusions:** The resulting horizontal and vertical profiles enabled the electron beam symmetry and flatness to be assessed. PDD was analyzed up to a  $9 \pm 0.05$  cm, establishing the electron depth penetration to ensure treatment of the skin surface.

© 2014 Universidad Autónoma del Estado de México. Published by Masson Doyma México S.A. All rights reserved.

## PALABRAS CLAVE

Irradiación total de piel;  
Electrones;  
Micosis fungoide

## Dosimetría de los grandes campos de electrones y protocolo de tratamiento de la micosis fúngica utilizando la técnica de irradiación cutánea total

### Resumen

**Introducción:** La terapia total de piel con haz de electrones (TSEBT) es una técnica usada en el tratamiento de enfermedades superficiales de piel tales como linfomas cutáneos. Aunque su efectividad ha sido demostrada a través de varios estudios clínicos en estadios avanzados de la micosis fungoide, no es una técnica disponible en muchos centros de cáncer en México debido a que se requieren campos grandes de electrones para cubrir un cuerpo entero.

**Objetivo:** Para obtener campos grandes de electrones para TSEBT, las distancias convencionales de tratamiento no son suficientes. Esto trae la necesidad de una caracterización y calibración especial del haz de electrones a distancias de 500 cm o más y la necesidad de crear un protocolo de tratamiento para TSEBT en nuestro país.

**Materiales y métodos:** Para la puesta en marcha de esta técnica fue seleccionado el acelerador lineal ELEKTA SYNERGY, con una energía de 6 MeV a una distancia fuente-superficie (SSD) de 500 cm, en modo de alta tasa de dosis (1,000 UM = 100 Gy), usando un cono aplicador de  $40 \times 40$  cm<sup>2</sup> y el ángulo de gantry de  $90^\circ$ , obteniendo un campo grande de electrones de  $200 \times 100$  cm<sup>2</sup> (área útil). La calibración de rutina fue realizada a una profundidad de referencia ( $Z_{ref}$ ) de 1.4 cm a una SSD de 100 cm y un cono aplicador de  $40 \times 40$  cm<sup>2</sup> usando una cámara de ionización de placas plano-paralelas y un electrómetro (Scandotronic Wellhofer modelo PPC05 FOCUS) y un maniquí de agua. El mismo procedimiento fue realizado para determinar la tasa de dosis absoluta en condiciones de tratamiento (500 cm). Para la caracterización del haz de electrones en términos de porcentaje de dosis a profundidad (PDD) y perfiles de dosis, se utilizó Película Radiocrómica Gafchromic EBT2 (PRC), después de ser calibrada para electrones en un maniquí de agua sólida (Scandotronic Wellhofer) a un  $Z_{ref} = 1.4$  cm de profundidad a una Distancia Fuente Isocentro SAD de 100 cm y de 500 cm, para obtener la ecuación de la dosis en respuesta de la densidad óptica. La PDD fue obtenida a 0, 1, 1.2, 1.4, 1.5, 2, 3, 4, 5, 6, 7, 8 y 9 cm de profundidad en el maniquí. La distribución espacial de dosis fue obtenida colocando muestras de PRC de  $3 \times 3$  cm<sup>2</sup> sobre la pantalla de acrílico que será situada enfrente del paciente (para así obtener la dosis absorbida máxima en piel). Por último, fue propuesto un protocolo de tratamiento.

**Resultados:** La profundidad de dosis máxima ( $Z_{ref}$ ) para electrones fue de  $1.4 \pm 0.05$  cm, de acuerdo con la distribución de dosis espacial relativa y el porcentaje de dosis en profundidad para una SSD de  $500 \pm 0.5$  cm, sobre un área de  $200 \times 100$  cm<sup>2</sup>. Se graficaron los perfiles del haz tanto horizontal como vertical, mostrando una simetría horizontal de  $\pm 0.35\%$ , aplanado horizontal de  $\pm 3.62\%$ , simetría vertical de  $\pm 2.1\%$  y aplanado vertical de  $\pm 14.2\%$ .

**Conclusiones:** Los resultados de los perfiles horizontal y vertical permiten evaluar la simetría y aplanado del haz de electrones. El PDD fue analizado hasta  $9 \pm 0.05$  cm, estableciendo la profundidad de penetración de los electrones, asegurando un tratamiento superficial a la piel.

© 2014 Universidad Autónoma del Estado de México. Publicado por Masson Doyma México S.A. Todos los derechos reservados.

## Introduction

Cutaneous T-cell lymphoma represents a complex array of disorders with different clinical courses and therapeutic considerations. Mycosis fungoides which affects the skin in flat patches, thin plaques, or tumors is the most common form of cutaneous T-cell lymphoma<sup>1</sup>; consequently, more is understood about its diagnosis, treatment and prognosis. The chronicity of the disease results in many patients being treated with multiple therapies in their lifetime, including skin directed therapies, such as ultraviolet light, topical and radiation. Total skin electron beam therapy (TSEBT) involves treating the entire skin surface using electron beams. The low-energy electrons generated by a linear accelerator penetrate only the skin, sparing deeper tissues and organs, ensuring a safe treatment. It has complete response rate of 80–97%. It can be employed as initial therapy in the presence of thick lesions for presenting greater therapeutic effect than topical chemotherapy and phototherapy.

For this technique, large electron fields are required. The objective of this project is to determine the dosimetric parameters, include them in the planning system in order to develop a treatment protocol for mycosis fungoides.

## Materials and methods

Reviewing the literature there are different methods of obtaining the very large fields needed for electron beam irradiation of the total skin. Several recommendations are made regarding the types of dosimetric measurements that should be performed prior to initiating such irradiation procedures. One widely used technique for TSEBT, which involves six dual fields, known as the Stanford protocol.

According to the IAEA TRS 398 Calibration Protocol<sup>2</sup>, a ELEKTA SYNERGY Linear accelerator was calibrated, at a  $Z_{ref}=1.40$  cm and a SSD of 100 cm with a  $40 \times 40$  cm<sup>2</sup> field size using a plane-parallel ionisation chamber and electrometer (Scanditronix Wellhofer model PPC05 FOCUS), and a water phantom. A 6 MeV energy was used at a high dose rate of one Monitor Unit (MU) equivalent to 10 cGy.

Radiochromic film (RCF) develops itself when exposed to ionizing radiation due to the polymerization process that takes place on its surface. It is made from polydiacetylene and it is basically composed by hydrogen, carbon, nitrogen, oxygen, lithium, chlorine and sodium. Its effective atomic number is very similar to the one of water. Radiation causes an increase in the number of polymers formed, which causes a film's optical density to increase. It has many advantages therefore it is used widely for medical purposes, including its high spatial resolution, two dimensional dosimetry, minimal thickness and permanent registry. The RCF opacity can be quantified by a light transmission factor and its measure is the optical density (OD). This characteristic can be measured by a spectrophotometer or a flatbed scanner. It is defined by the equation:

$$OD = -\log_{10}(T) = -\log_{10}\left(\frac{I_0}{I}\right) \quad (1)$$

Where,  $I_0$  is the intensity of light incident on a film,  $I$  is the intensity transmitted through the film irradiated.

## Radiochromic film handling and processing

The commercial Gafchromic EBT2 RCF (measuring  $20.3 \times 25.4$  cm<sup>2</sup>) was handled according to the manufacturer and the AAPM Task Group 55 recommendations<sup>3</sup>. It was cut down to segments measuring each  $3 \times 3$  cm<sup>2</sup> with a 48 hours interval between slicing and the first irradiation in order to avoid any disturbance of its components due to mechanical damage caused by the guillotine. Another 48 hours period was considered after irradiation to scan film segments to allow the polymerization process to finish. The film was protected from further irradiation or light exposure and stored under controlled humidity and temperature conditions.

An EPSON EXPRESSION 10000 XL scanners with EPSON SCAN software were used to digitalize the film before and after irradiation. In order to reach stable temperature conditions, the scanner was turned on one hour before use and during scanning each piece was laid at the center of the scanner to avoid uneven lighting. The film edges were covered with a black bind to avoid modifications due to light dispersion.

The film orientation was identified by a mark in the right upper corner during the entire process. Each piece endured four scans to reduce scanner or operator interference and a mean was calculated between the four images obtained. RGB format (red, green and blue) was used for digitalization with 75 points per inch spatial resolution (dpi) and 48 bits of color depth (16 bits per channel). Images were saved in Tagged Image File Format (TIFF) and processed with ImageJ software. Information from the red channel was extracted of the RCF, where the active components express their maximum response.

We determined the regions of interest (ROI) with the ImageJ software. The size of a ROI was determined by the conversion 1 pixel = 0.08455 mm due to image resolution (Fig. 1).

Analyzing the information from the irradiated and non-irradiated films using the histogram function of the program, we obtained the intensity ( $I$ ) and the standard deviation (SD). It is recommended the SD did not surpass 3% intensity (Fig. 2)<sup>3</sup>. Finally, RCF response is obtained using equation 1.

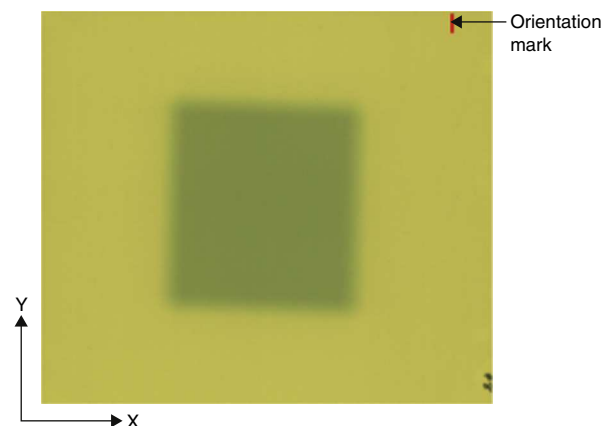


Figure 1 Sample of radiochromic film.

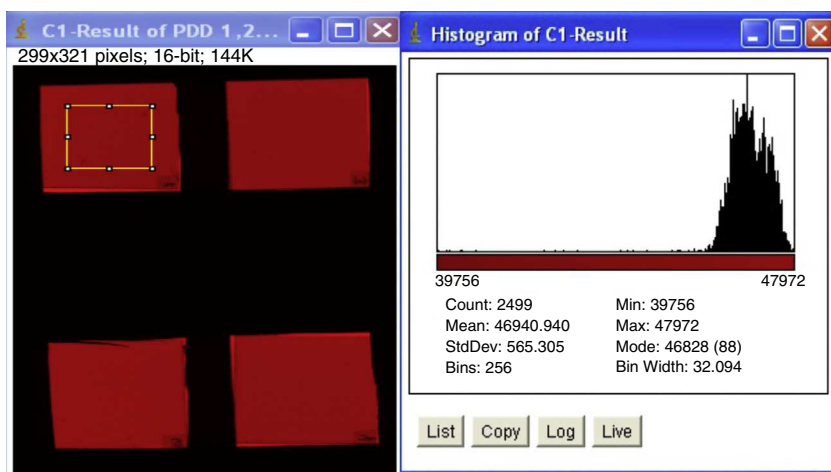


Figure 2 Regions of interest (ROI) and histogram.

### Radiocromic film calibration

In order to determine the absorbed dose in response to the netOD of the RCF, obtaining the net optical density of the following equation:

$$\text{netOD} = \text{OD}_{\text{exp}} - \text{OD}_{\text{unexp}} \quad (2)$$

Where,  $\text{OD}_{\text{exp}}$  is the optical density of the film exposed to radiation,  $\text{OD}_{\text{unexp}}$  is the optical density of the film not exposed to radiation.

Measures were performed in a  $30 \times 30 \times 30 \text{ cm}^3$  solid water phantom (SCANDITRONIX WELLHOFER model TYPE SP34). The dose at which the film was irradiated cover a range of 0-5 Gy each irradiation was of .5 Gy. For each value of absorbed dose considered in the calibration curve we used four  $3 \times 3 \text{ cm}^2$  films in order to reduce the statistical uncertainty. Each piece of film was placed at a depth of 1.4 cm in solid water which is regarded as the reference depth ( $Z_{\text{ref}}$ ) of 6 MeV electrons, with a SSD of 100 cm and with a field size of  $10 \times 10 \text{ cm}^2$ . Films were then scanned and the images obtained were processed with the ImageJ software, using a ROI of  $1 \times 1 \text{ cm}^2$ , obtaining the corresponding optical densities and SD. We plotted the dose – response calibration curve, and a third-degree polynomial adjustment was made to the calibration curve, obtaining the following equation:

$$\text{Dose} = 0.06596 + 8.33603(\text{netOD}) + 14.25653(\text{netOD})^2 + 5.48214(\text{netOD})^3 \quad (3)$$

### Absorbed dose distribution at 500 cm

According to the AAPM Task Group 55 recommendations RCF of  $3 \times 3 \text{ cm}^2$  were obtained and were adhered to the acrylic screen in such a manner that they would cover a human body surface (screen acrylic dimensions  $200 \times 100 \text{ cm}^2$ ). The RCF adhered to the screen acrylic were irradiated at a SSD of 500 cm to a 1,000 MU with a  $40 \times 40 \text{ cm}^2$  SAD field, with a gantry angle of  $90^\circ$  and a collimator angle of  $270^\circ$ .

### Percentage depth dose

The graphic of Percentage Depth Dose was obtained by placing a solid water phantom of  $30 \text{ cm}^3$  to SAD and SSD of 500 cm, setting specific distances at which the RCF of  $3 \times 3 \text{ cm}^2$  were placed (0, 1, 1.2, 1.4, 1.5, 2, 3, 4, 5, 6, 7, 8, 9) this was performed under 2 forms; with acrylic screen and acrylic screen without.

### Beam energy

The beam incident on the output window of Linac can be characterized by a distribution of maximum energy called linac's energy. The distribution of beam energy in the surface treatment (phantom surface) is characterized by its maximum or most probable energy  $E_{p,o}$ . The following relationship is used for obtain the most probable energy in the phantom surface  $E_{p,o}$ , in MeV, the range practical,  $R_p$  in centimeters of water, it is defined like the depth of the point where the to the descending linear portion of the curve (at the point of inflection) intersects the extrapolated background (bremsstrahlung).

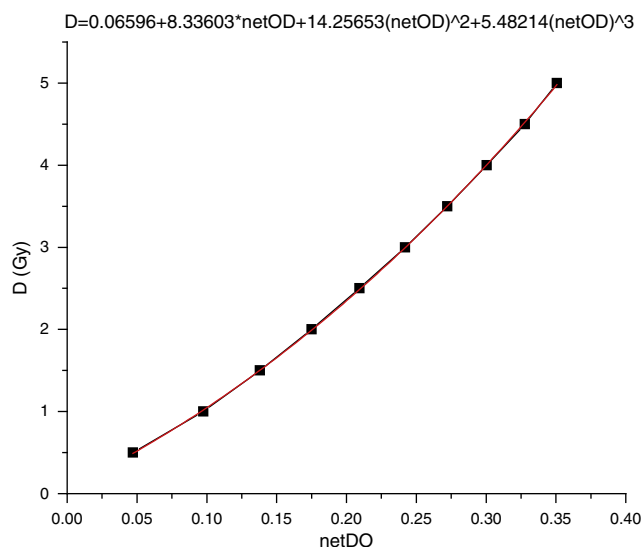
$$E_{p,o} = C_1 + C_2 R_p + C_3 R_p^2 [\text{MeV}] \quad (2)$$

For water,  $C_1=0.22 \text{ MeV}$ ,  $C_2=1.98 \text{ MeV cm}^{-1}$ , and  $C_3=0.0025 \text{ MeV cm}^{-2}$

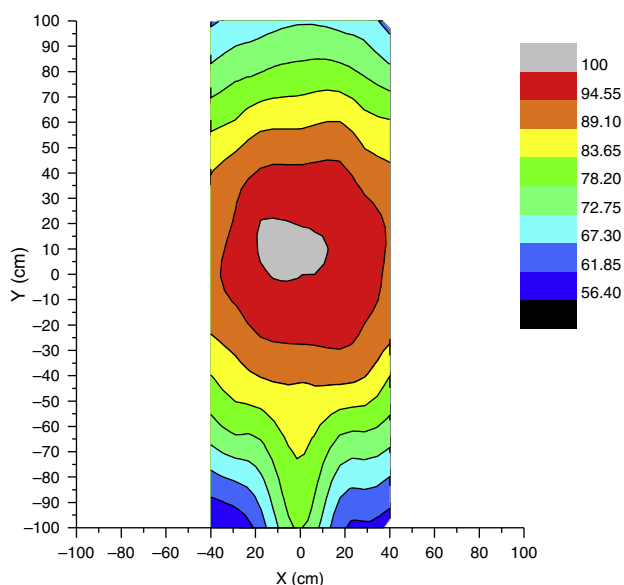
## Results and discussion

### Radiocromic film calibration to electrons

Calibration curve of radiochromic film to electrons is in Figure 3 which shows the behavior of electrons in their relationship dose-netOD and the equation obtained (3). The dose obtained to 500 cm SAD with the RCF is verified with ionization chamber plane-parallel resulting in a percentage difference of  $\pm 2\%$  for this reason the RCF can be considered as an optimum dosimeter for electrons.



**Figure 3** Electron radiochromic film calibration curve.



**Figure 4** Isodose distribution.

### Absorbed dose distribution and percentage depth dose at 500 cm

the absorbed dose distribution at SSD 500cm in an area such as to cover a robust body  $200 \times 100 \text{ cm}^2$  is presented in [Figure 4](#) which shows some heterogeneity in the distribution of absorbed dose at the surface of the acrylic screen according to the symmetry and flatness beam, which will be used like good distribution for TSEBT according to the results of symmetry and flatness of other authors. ([Fig. 5](#))

The percentage depth dose is presented in [Figure 6](#) which compares the PDD with and without acrylic screen, obtained beam's central axis until a depth of 9 cm, in this comparison it can assess that acrylic screen is useful to obtain the maximum dose of electrons at 0.4 cm depth.

### Symmetry and flatness

The symmetry and flatness of large field at 500 cm was calculated following the AAPM recommendations<sup>4</sup> ([Figs. 7 and 8](#)).

The symmetry and flatness horizontal and vertical of electron large field was calculated from the dose distribution data. The symmetry of  $40 \times 40 \text{ cm}^2$  field at 500 cm was: horizontal  $\pm 0.35\%$  and vertical  $\pm 2.1\%$ , the flatness obtained was: horizontal  $\pm 3.62\%$  and vertical  $\pm 14.2\%$ . Taking into account the experience of other groups which have reported that at 500 cm a vertical uniformity  $\pm 8\%$  and horizontal is an achievable purpose to a electrons large field in TSEBT<sup>5,6</sup>. However, in order to achieve good beam uniformity in the treatment plane (0.4 cm depth), the dose uniformity on the patient's surface cannot be better than  $\pm 15\%$ , due to the variable SSD, self-shielding and differences in curvatures<sup>5,6</sup>.

### Beam energy

The most probable energy in the phantom surface  $E_{po}$  obtained was 4.4 MeV according to the  $R_p$  of 2.1 cm such that the acrylic screen working to degrade the energy of 6 MeV to 4.4 MeV while the x-ray contamination by bremsstrahlung interactions was approximately of 5% to 7%.

### Treatment protocol

#### Selection of patients

- Clinical stage: I, II, ECOG: 0-1, KPS > 70<sup>7,8</sup>.
- Hematological profile and blood chemistry within normal parameters.
- Pre-treatment with low doses of steroids (prednisone, 25 mg daily), antiemetic.

#### Treatment technique

- Total body irradiation at 6 positions.
- 1 cm scattering screen.
- 6 MeV e<sup>-</sup>.
- 1 Gy/fraction, 4 fractions/week resting Wednesday, Saturday and Sunday to avoid acute skin toxicity (temporary nail loss, anidrosis, epistaxis and parotitis).
- Duration of treatment: 9 weeks.
- Total absorbed dose: 36 Gy.

### Patient positioning

- Place shielding eyes, nails and genitals.
- The shield is fabricated from 1.5mm lead is being personalized for each patient by the different anatomical dimensions, is adhered by means of transport (adhesive plaster for clinical use).
- Place the PRC in the patient's anatomy (vertex, face, neck, chest, abdomen, back, arms, buttocks, groin, legs, warm, feet, soles) between 2 and 3 RCF  $2 \times 2 \text{ cm}^2$  by anatomical thus making an *in vivo* dosimetry and perform quality control of the absorbed dose and the dose found in anatomical areas with greater curvature.
- Move the patient in a wheelchair to the acrylic screen to prevent any loss of shielding or dosimetry material.

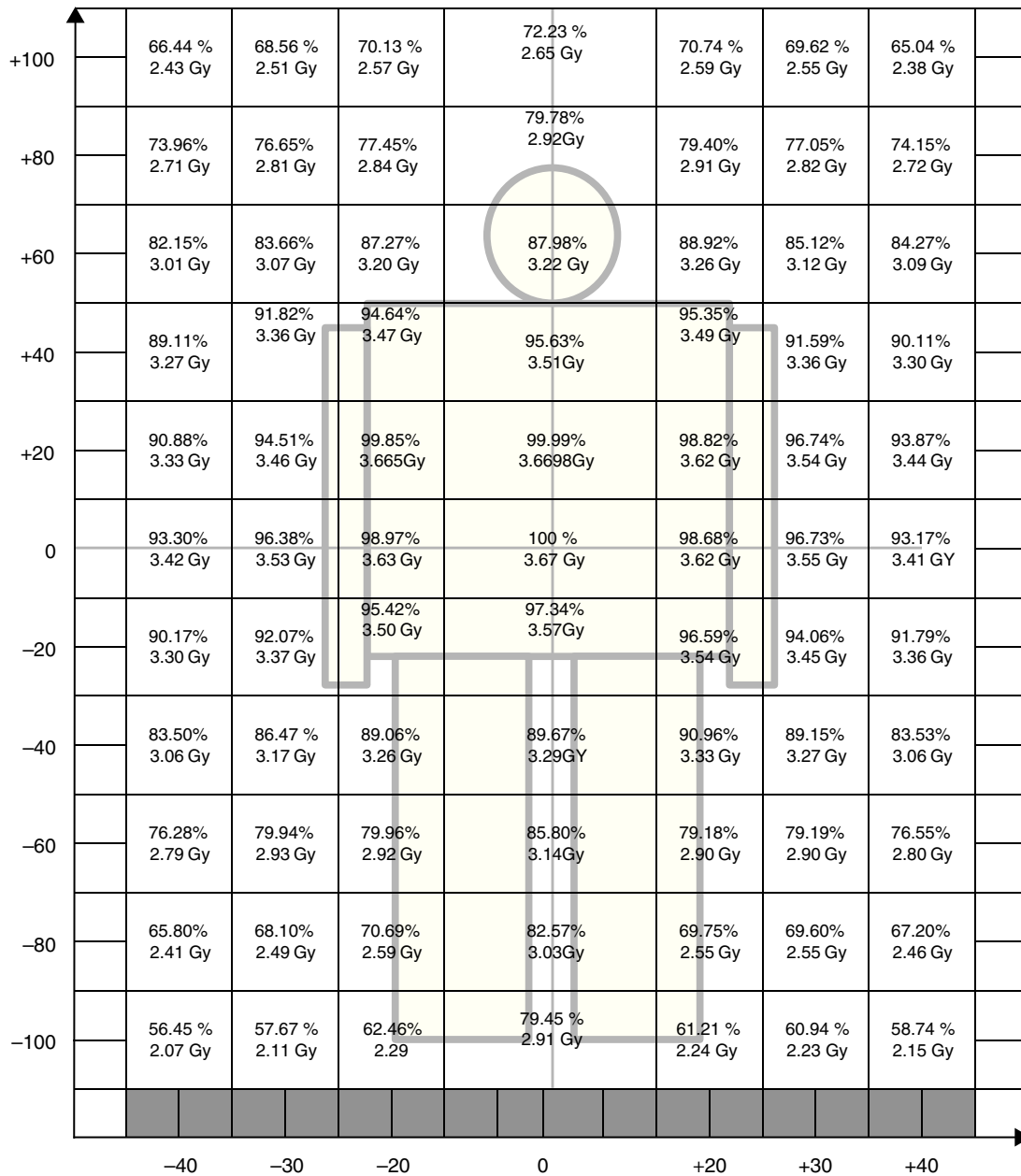


Figure 5 Spatial dose distribution map.

- Place the patient as close (stuck) in the acrylic screen anterior which would be the first of the 6 positions according to the Stanford technique.
- Throughout the placement time to explain to patients the duration of treatment per day, and how complicated it because of the anatomical positions which will be in the treatment room.

**Post-irradiation procedure**

- Collect and store the radiochromic films.
- The next day, reading radiochromic films, to confirm the absorbed dose delivered so we can proceed with corrections or boost dose when the patient arrives for their next session.

**Special considerations**

- The depth at which 80% of the administered dose is absorbed should not be less than 4 mm, to ensure that the epidermis and dermis are within the region of high dose.
- At a depth of 20 mm the absorbed dose should not exceed 20%, to minimize damage to organs at risk.
- Boost irradiation on soles and top of the head (27 Gy, 15 fractions of 1.8 Gy each).
- Other body regions receiving D<80% of the prescribed dose should receive adjuvant treatment, in this case, the technique for each field can vary according to the depth of skin infiltration of the disease. For example, if it is desired to irradiate only the skin surface, complementary fields with lower e- energies of 3-6 MeV can be used.

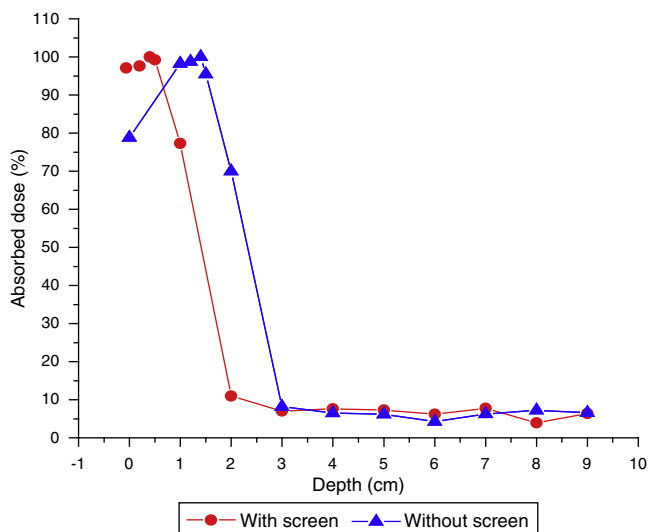


Figure 6 Percentage depth dose.

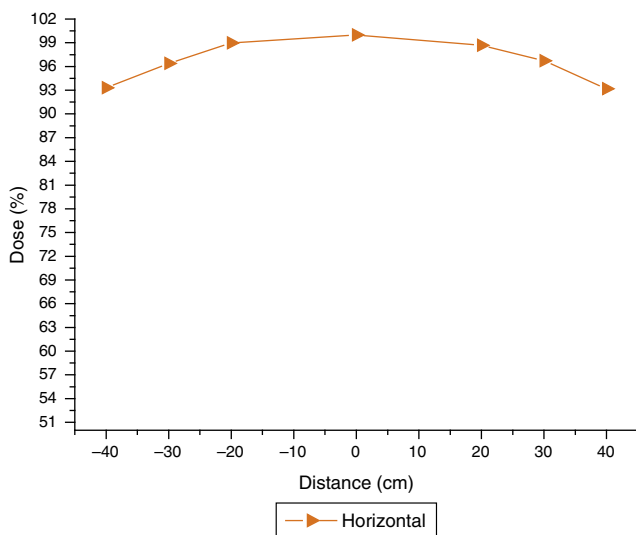


Figure 7 Horizontal symmetry and flatness.

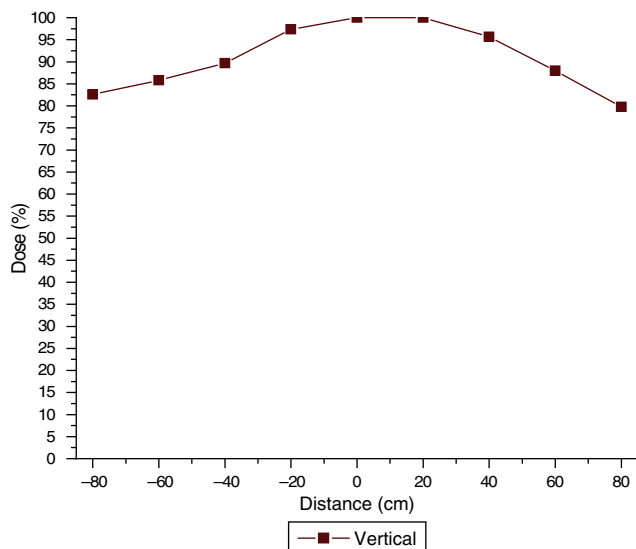


Figure 8 Vertical symmetry and flatness.

- The total absorbed dose of bremsstrahlung X-ray contamination should not be greater than 0.7 Gy.
- When there is lymph node involvement, higher electron energies (6-12 MeV) are required.

For patients with advanced stage disease (IVA, IVB), with visceral involvement, total body irradiation with photons should be considered.

- For quality control and verification of the treatment dose for body regions receiving less than 80% of the prescribed dose, RCF should be used.

## Conclusions

Dosimetry of a large electron field discloses the information necessary to treat the whole body of a patient such as the dose distribution to well know the absorbed dose at the surface of the patient's body, the percentage depth dose to know the depth at which the electrons delivered their maximum dose (0.4 cm) and thus assuring the irradiation only to level cutaneous. Absorbed dose distribution at 500 cm presents symmetry and flatness within limits reported by other authors and is considered acceptable for a treatment of Total Skin Electron Beam Therapy. The acrylic screen with thickness of 1 cm is an effective degrader that allows the electrons deposit their maximum dose to a 0.4 cm skin depth. Dosimetric characterization of large field electron allowed to perform a treatment protocol in agreement with the EORTC recommendations<sup>9,10</sup>.

## Funding

This project received financing from the Universidad Autónoma del Estado de México (UAEM) and the Consejo Mexiquense de Ciencia y Tecnología (COMECYT) through scholarships awarded.

## Conflict of interest

The authors have no conflicts of interest to declare.

## Acknowledgments

The authors wish to thank the institutions supporting this project: The American British Cowdry Medical Center, Universidad Autónoma del Estado de México (UAEM) and Hospital General de Mexico "Dr. Eduardo Liceaga".

## References

1. Reavely MM, Wilson LD. Total skin electron beam therapy and cutaneous T-cell lymphoma: a clinical guide for patients and staff. *Dermatol Nurs.* 2004;16(1):36-9.
2. International Atomic Energy, Agency., Absorbed dose determination in external beam, radiotherapy., Technical Reports Series, N° 398. Vienna: IAEA; 2005.
3. Niroomand A, Blackwell C, Coursey B, et al. Radiochromic film dosimetry. Recommendations of AAPM Report No. 63. Task Group 55. *Med Phys.* 1998;25:2093-115.

4. Khan FM, Doppke KP, Hogstrom KR, et al. Clinical electron-beam dosimetry: report of AAPM Radiation Therapy Committee Task Group No. 25. *Med Phys.* 1991;18(1):73–109.
5. el-Khatib E, Hussein S, Nikolic M, et al. Variation of electron beam uniformity with beam angulation and scatterer position for total skin irradiation with the Stanford technique. *Int J Radiat Oncol Biol Phys.* 1995;33(2):469–74.
6. Kumar PP, Henschke K, Mandal KP, et al. Early experience in using an 18 MeV linear accelerator for mycosis fungoides at Howard University Hospital. *J Natl Med Assoc.* 1977;69(4):223–6.
7. Oken MM, Creech RH, Tormey DC, et al. Toxicity and response criteria of the Eastern Cooperative Oncology Group. *Am J Clin Oncol.* 1982;5(6):649–55.
8. Yates JW, Chalmer B, McKegney FP. Evaluation of patients with advanced cancer using the Karnofsky performance status. *Cancer.* 1980;45(8):2220–4.
9. Willemze R, Kerl H, Sterry W, et al. EORTC classification for primary cutaneous lymphomas: a proposal from the Cutaneous Lymphoma Study Group of the European Organization for Research and Treatment of Cancer. *Blood.* 1997;90(1):354–71.
10. Willemze R, Meijer C. Cutaneous B-cell lymphoma. *Am J Dermatopathol.* 1999;21:265–73.