

# Revista Colombiana de Anestesiología

## Colombian Journal of Anesthesiology

www.revcolanest.com.co



### Scientific and Technological Research

## Predictive and clinical performance of a TCI device for sevoflurane at a conventional workstation: Pharmacokinetic correlation of the model used<sup>☆</sup>



César Augusto Candia Arana (MD)<sup>a,\*</sup>, Caridad Greta Castillo Monzón (MD)<sup>a</sup>,  
José Antonio Álvarez Gómez (PhD)<sup>a</sup>, Joaquín Roca González (PhD)<sup>b</sup>,  
Javier Hernando Eslava Schmalbach (PhD)<sup>c</sup>

<sup>a</sup> Anesthesia and Reanimation Specialist, Service of Anesthesia and Reanimation, Cartagena University Hospital Campus, Cartagena, Murcia, Spain

<sup>b</sup> University Professor "Industrial and Medical Electronics Research Group" Universidad Politécnica de Cartagena, Cartagena, Spain

<sup>c</sup> University Professor, Health Equity Team, School of Medicine, Universidad Nacional de Colombia, Bogotá, Colombia

#### ARTICLE INFO

##### Article history:

Received 10 January 2014

Accepted 7 April 2014

Available online 18 June 2014

##### Keywords:

Anesthetics inhalation  
Global warming  
Pharmacokinetics  
Economics pharmaceutical  
Anesthesia

#### ABSTRACT

**Introduction:** Good governance of resources and global warming has attracted interest on minimal flow (0.3–0.5 l/min) inhalation anesthesia.

**Objectives:** To evaluate the predictive and clinical performance of a TCI (Target-controlled infusion) device, and its pharmacokinetic correlation for sevoflurane.

**Methods:** Prospective, longitudinal, and analytical study on 25 adult patients. Fresh gas flow used 0.5 l/min. Target concentration of 1.2% (v/v). Continuous and variable infusion into the circuit of the anesthesia workstation. Controller developed with LABVIEW 6.1. Hemodynamic, respiratory and anesthetic depth data collected every 5 s using the anesthesia workstation software. Bias (Median of Predictive Error, MDPE%), inaccuracy (Absolute Mean of Predictive Error, MDAPE%), wobble, and divergence of the TCI device were determined in the first hour. STATA-12 pk collapse was used to analyze the area under the curve of the target and expired concentrations. The results are expressed as mean (95% CI) and median [IQR]\*. **Results:** Target concentration used 1.22 [1.14–1.37]\*%, reached in 04:07 [03:15–06:15]\* min:s (expiratory branch). Anesthetic duration 1:10:50 (00:56:57–1:24:43) h:min:s. Sevoflurane consumption 6.9 (5.7–8.0) ml. MDPE% –12.8 (–17.6 to –8.1)%; MDAPE% 15.9 (11.9–19.8)%; wobble 6.9 (5.0–8.7)% and divergence 0.89% (–5.96 to 7.7)%h<sup>-1</sup>. Interactions per hour on the TCI of 3 (2–4). Correlation of the area under the curve, Spearman's rho = 0.8577,  $p < 0.00001$ .  $\geq 15\%$  inaccuracy was associated with age >65 years and obesity.

<sup>☆</sup> Please cite this article as: Candia Arana CA, Castillo Monzón CG, Álvarez Gómez JA, González JR, Eslava Schmalbach JH. Desempeño predictivo y clínico de un dispositivo TCI para sevoflurano en una estación de trabajo convencional: Correlación farmacocinética del modelo empleado. Rev Colomb Anestesiología. 2014;42:255–264.

\* Corresponding author at: Calle Ronda Ciudad de la Unión n° 8, Esc 2, 2A, 30203 Cartagena, Murcia, Spain.

E-mail address: ccandia@hotmail.es (C.A. Candia Arana).

Conclusions: The TCI sevoflurane® showed good performance, and the target concentration was rapidly reached and remained stable, with few interactions with the device needed during the first hour. There were neither overdosing nor clinically significant alterations.

© 2014 Sociedad Colombiana de Anestesiología y Reanimación. Published by Elsevier España, S.L.U. All rights reserved.

## Desempeño predictivo y clínico de un dispositivo TCI para sevoflurano en una estación de trabajo convencional: correlación farmacocinética del modelo empleado

### R E S U M E N

#### Palabras clave:

Anestésicos por inhalación  
Calentamiento global  
Farmacocinética  
Economía farmacéutica  
Anestesia

**Introducción:** La racionalización de recursos y el calentamiento global han despertado el interés en la anestesia inhalatoria con flujos mínimos (0,3-0,5 l/min).

**Objetivos:** Conocer el desempeño predictivo, clínico y la correlación farmacocinética de un dispositivo target-controlled infusion (TCI) para sevoflurano.

**Metodología:** Estudio prospectivo, longitudinal y analítico en 25 pacientes adultos. Flujo de gas fresco empleado 0,5 l/min. Concentración objetivo de sevoflurano 1,2% v/v. Infusión continua y variable en el circuito de la estación de anestesia. Controlador desarrollado con LABVIEW 6.1. Datos hemodinámicos, respiratorios y profundidad anestésica capturados cada 5 s con software de la estación de anestesia. Se determinó en la primera hora: sesgo (MDPE%), inexactitud (MDAPE%), oscilación y divergencia del TCI; análisis del área bajo la curva de las concentraciones objetivo y espirada con pkcollapse STATA-12. Resultados expresados en media (IC 95%) y mediana [IQR]\*

**Resultados:** Concentración objetivo empleada 1,22 [1,14-1,37]\*%, alcanzada en 04:07 [03:15-06:15]\* min:s (en rama espiratoria). Duración anestésica 1:10:50 (0:56:57-1:24:43) h:min:s. Consumo de sevoflurano 6,9 (5,7- 8,0) ml. MDPE% -12,8 (-17,6 a -8,1)%; MDAPE% 15,9 (11,9-19,8) %; oscilación 6,9 (5,0-8,7) % y divergencia 0,89 (-5,96-7,7)%h-1. Interacciones por hora sobre el TCI de 3 (2-4). Correlación del área bajo la curva, Spermann rho = 0,8577; p < 0,00001. La inexactitud ≥ 15% se asoció con edad > 65 años y obesidad.

**Conclusiones:** El TCI sevoflurane® mostró buen desempeño, la concentración objetivo se alcanzó rápidamente y se mantuvo estable, siendo necesarias pocas interacciones sobre el dispositivo durante la primera hora. No hubo sobredosificación ni alteraciones clínicas significativas.

© 2014 Sociedad Colombiana de Anestesiología y Reanimación. Publicado por Elsevier España, S.L.U. Todos los derechos reservados.

## Introduction

Low Flow Anesthesia (LFA), 0,5–1.0 l/min, has shown lower consumption of anesthesia gas and reduced health costs,<sup>1</sup> it has minimized labor exposure and environmental pollution,<sup>2</sup> in addition it has enabled the warming and humidifying of inhaled gases;<sup>3</sup> characteristics that have been optimized by the use of Minimal-Flow Anesthesia (MFA), 0.3–0.5 l/min.

Despite the association of minimal-flow sevoflurane anesthesia with the accumulation of toxic substances and nephrotoxicity, this fact has not yet been demonstrated in humans<sup>4</sup> during extended surgical procedures,<sup>5</sup> or using soda lime.<sup>6</sup> The use of nitrous oxide (N<sub>2</sub>O) is not recommended in order to avoid the administration of hypoxic mixtures; such as forgoing the use of MFA in patients with large hematomas, severe hemolysis and massive transfusion to prevent the endogenous accumulation of carbon monoxide from degradation of the heme group.<sup>7</sup>

Using a FGF of 2 l/min (O<sub>2</sub> + Air) FGF and a minimum alveolar concentration for 1 h (CAM-h) Ryan and Nielsen<sup>8</sup> calculated the “20-year carbon dioxide emissions equivalent” (CDE<sub>20</sub>) for sevoflurane, and found that it was similar to the emission of a car in a distance of 28 km (6980 g of CO<sub>2</sub>/h); when associated to 60% N<sub>2</sub>O the effect was increased 5.9 fold.

Different applications have been used to implement LFA and MFA with vaporizer: the Gasman<sup>®9</sup> simulator, the real-time halogenated agent concentration predictive software by Kennedy et al.<sup>10</sup> and a software that alerts when the FGF exceeded 1 l or 2 MAC-h for sevoflurane.<sup>11</sup> These two latter software programs were able to lower the FGF down to 35%<sup>12</sup> and 24% respectively.

The first workstation with closed circuit control and halogenated compound injection was PHISIOFLEX<sup>®13</sup>, was removed from the market because of its high selling price. Later on, the DRAGER-ZEUS<sup>®</sup> station achieved constant concentrations of inspired oxygen and expired anesthetic agent, resulting in decreased halogenated compound consumption

and greater hemodynamic stability.<sup>14</sup> A 27% drop in consumption and a reduction of 44% greenhouse gas emissions were recently reported using the AISYS-GE™ workstation ET CONTROL® module.<sup>15</sup>

Initially, the syringe injection of liquid sevoflurane was administered to determine the closed circuit uptake model.<sup>16,17</sup> The AnaConDa™ device is currently available for injecting the halogenated compound in a non-reinhalation circuit, with anesthetic savings similar to a LFA technique.<sup>18</sup>

In the mid-nineties, Candia and Acosta<sup>19</sup> developed the first TCI model for halogenated compounds, based on the equation suggested by Lowe and Ernest.<sup>20</sup> This IT application enabled the continuous injection of the halogenated agent, avoiding the administration of boluses and the use of the stopwatch. In a second version, other uptake models were simulated and the infusion was adjusted to the body surface. Later on, Candia and Roca developed the third TCI sevoflurane® version for the current workstations, using MFA.<sup>21</sup>

The primary objectives of the study were to assess the performance of TCI sevoflurane® in the general population of our hospital, using a TCI accepted methodology and to estimate the pharmacokinetic correlation of the model, establishing the area under the curve of the target and expired concentrations. The secondary objectives were: to learn about the behavior of the hemodynamic and respiratory variables, the depth of anesthesia during the first hour and to analyze the relationship between the controller's performance and the patients' characteristics.

## Methods

Prospective, longitudinal, analytical study at the Cartagena University Hospital Complex. The protocol was approved by the hospital's Ethics and Clinical Research Committee and the informed consents were obtained. 30 adult patients meeting the following criteria were recruited: 16-90 years old, ASA I-III and scheduled for elective surgery lasting over 30 min. The exclusion criteria were: obstetric patients, heavy smokers and patients with a history of drug addiction. 20 min before the procedure the patients were pre-medicated with midazolam 1-2 mg or fentanyl 50-100 µg. Denitrogenation for 3 min with O<sub>2</sub> at 8 l/min. TCI propofol and remifentanyl induction at effect site concentrations of 3-4.5 µg/ml and 3-4.7 ng/ml respectively and rocuronium 2DE95. Following intubation, the FDF was reduced to 0.5 l/min (O<sub>2</sub> 0.35 l/min + air 0.15 l/min), propofol was suspended and TCI sevoflurane® was initiated with a target concentration of 1.2% (v/v); mean value obtained from the analysis of the trials completed to determine the necessary concentration for a BIS ≤50 in patients ≤40 years old (MAC-BIS<sub>50</sub>).<sup>22-24</sup> Remifentanyl was used for maintenance based on its synergistic action with sevoflurane.<sup>25</sup>

The TCI was developed with LABVIEW® 6.1 (National Instruments, Austin, USA) software that enabled continuous and variable infusion of liquid sevoflurane at the AESPIRE-VIEW® (GE-Healthcare, Madison, USA) station, using the Harvard Apparatus 22 (South Natick, USA) infusion syringe. Using the parameters of age, weight, size and gender, the following estimates were made: age-adjusted target concentration<sup>26</sup>; oxygen consumption and minute volume<sup>27</sup>

and effective pulmonary volume.<sup>28</sup> The system's purge dose (circuit-patient) was administered in the first minute. A negative bi-exponential model derived from a closed circuit uptake study was used.<sup>17</sup> If needed, TCI interactions were preformed, changing the target concentration with the guidance of the gas analyzer (Fig. 1).

The system's volume included an adult-type circuit (M1019499; GE, Helsinki, Finland), the humidifier, the analyzer connection and the oro-tracheal tube. The gas analyzer leaks were added to the model. The soda-lime absorption and degradation of sevoflurane were excluded from the calculations because they were considered of little clinical importance.<sup>29</sup> The soda lime used was partially used and humidified. The sevoflurane was placed in a syringe with an adapter (26042; Sedana Medical AB, Sundbyberg, Sweden) and by means of an extension (MFX1954-ALARIS®, Höchberg, Germany) coupled to a modified metallic t-connector in the inspiratory branch, as described by Parra.<sup>30</sup> The syringe and the plastic extension maintained their physical stability.<sup>31</sup>

The principal variables were: target concentrations, inspired and expired sevoflurane concentrations, captured every 5 s using the S/5™Collect4 software (GE Healthcare, Helsinki, Finland); the measurement precision was 0.15% (v/v), as per the manufacturer's brochure. Secondary variables: systolic blood pressure (SBP), heart rate (HR), end-tidal CO<sub>2</sub> (ETCO<sub>2</sub>), inspired oxygen fraction (FiO<sub>2</sub>), state entropies (SE) and response entropies (RE).

TCI performance<sup>32</sup> was based on the Predictive Error calculation (PE%).

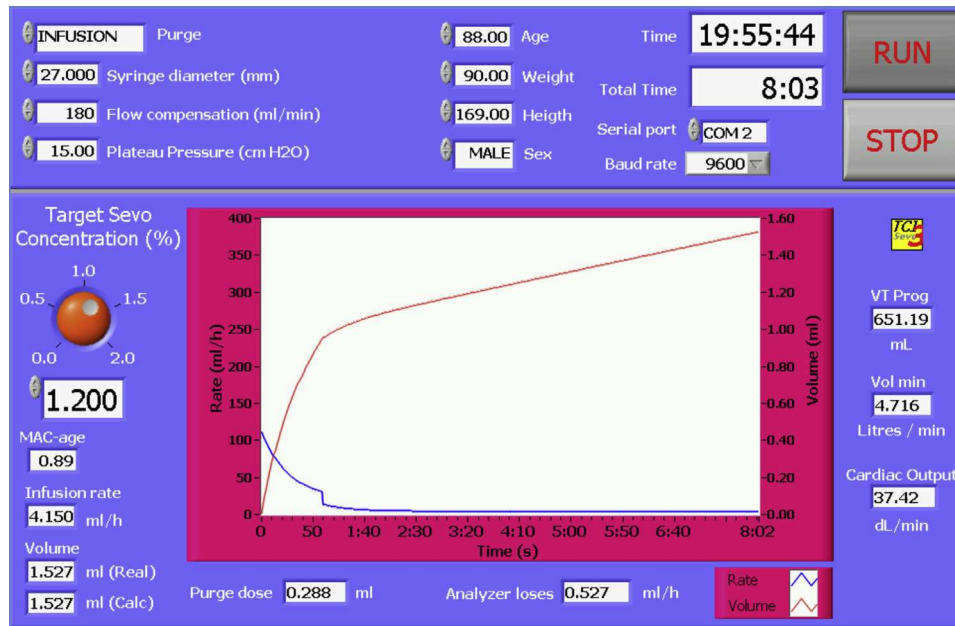
Predictive error (PE)%

$$= \left[ \frac{\text{Expired concentration} - \text{Target concentration}}{\text{Target concentration}} \right] \times 100$$

The bias (MDPE%), inaccuracy (MDAPE%) and the controller oscillation were inferred every 5 min. The MDPE% is the PE% median. It is the error sign indicates: overdose (+) or underdose (-). MDAPE% is the PE% mean absolute value. It is the magnitude of error. Wobble is the mean absolute value of the difference between each PE% and the subject's MDPE. It measures each patient's predictive instability or variability. Divergence is the slope of the lineal regression curve of PE% absolute values vs. time, expressed as a divergence percentage per hour; its positive value indicates the trend of the target concentration to move away from the measured or expired concentration in time and its negative value indicates convergence.

The normal distribution of the data was determined using Shapiro-Wilks statistics. The comparison of target, inspired and expired means was done using the signs range test. Chi square or Fischer's Exact Test and the binary logistics regression analysis were used to establish an association between the variables of patients grouped by: age ≥65 years old; gender, BMI ≥30, ASA classification and number of user's TCI interactions <3 per hour; compared against the visually grouped parameters of TCI performance: MDPE% <-13%, MDAPE% <15%, wobble <7% and negative divergence.

The data analysis was done with SPSS 21 (IBM®, Armonk, USA) and EXCEL 2007 (Microsoft®, Redmond, USA). The pharmacokinetic analysis of the area under the curve for the



**Fig. 1 – TCI sevoflurane© Main Screen.** In the upper part of the screen enter the patient's characteristics. In the left lower quadrant enter the sevoflurane target concentration used, corrected for age. In the middle of the graph; in blue, the infusion rate and in red the volume of liquid sevoflurane administered.

Source: TCI sevoflurane© log. César Augusto Candia Arana and Joaquín Roca González authors of TCI sevoflurane©.

target concentration and expired sevoflurane concentration was performed with the pharmacokinetic data generator (pkcollapse) STATA 12 (College Station, USA). The results were expressed as Mean (95% CI) for normal distribution values and Median with interquartile range [IQR 25–75%]\* for the non-parametric; the acceptable level of significance was  $p < 0.05$ . The estimator used was odds ratio (95% CI). The sample size with an alpha error = 0.05 and a beta power = 0.8 was 25 patients, estimated according to our pilot study,<sup>22</sup> using the variance of MDAPE% = 9.86.

## Results

25 of 30 patients completed the study; three were excluded for missing data and two for circuit leaks. 80% of the patients had a BMI  $\geq 25$ . 48% of the surgical procedures were laparoscopic (Table 1).

The target, inspired and expired concentrations showed non-parametric distributions; the sevoflurane expired mean was 18.4% below the target concentration mean used. 84.5% of the values of Predictive Error (PE%) showed normal distribution, so that MDPE%, MDAPE%, wobble and divergence of TCI, was expressed with mean (CI 95%) (Table 2).

In absolute values, MDPE% was consistent with an under-dosing of  $< 0.16\%$  (v/v) (Fig. 2B). The average MDAPE% was 16% until minute 40 (Fig. 2C). Oscillation in average was  $< 10\%$  (0.12%, v/v) between minutes 10 and 55 (Fig. 2D).

TCI's clinical performance was represented with box-plots (Fig. 3). The SBP dropped by 13% in 50% of the patients at minute 0. HR, ETCO<sub>2</sub>, SE and RE showed no significant changes. FiO<sub>2</sub> showed a rapid decrease following the nitrogen wash

in the first 30 min and was maintained between 70% and 60% from minutes 30 through 60. The concentration–time area under the curve correlation for target and expired con-

**Table 1 – Patient characteristics, n = 25.**

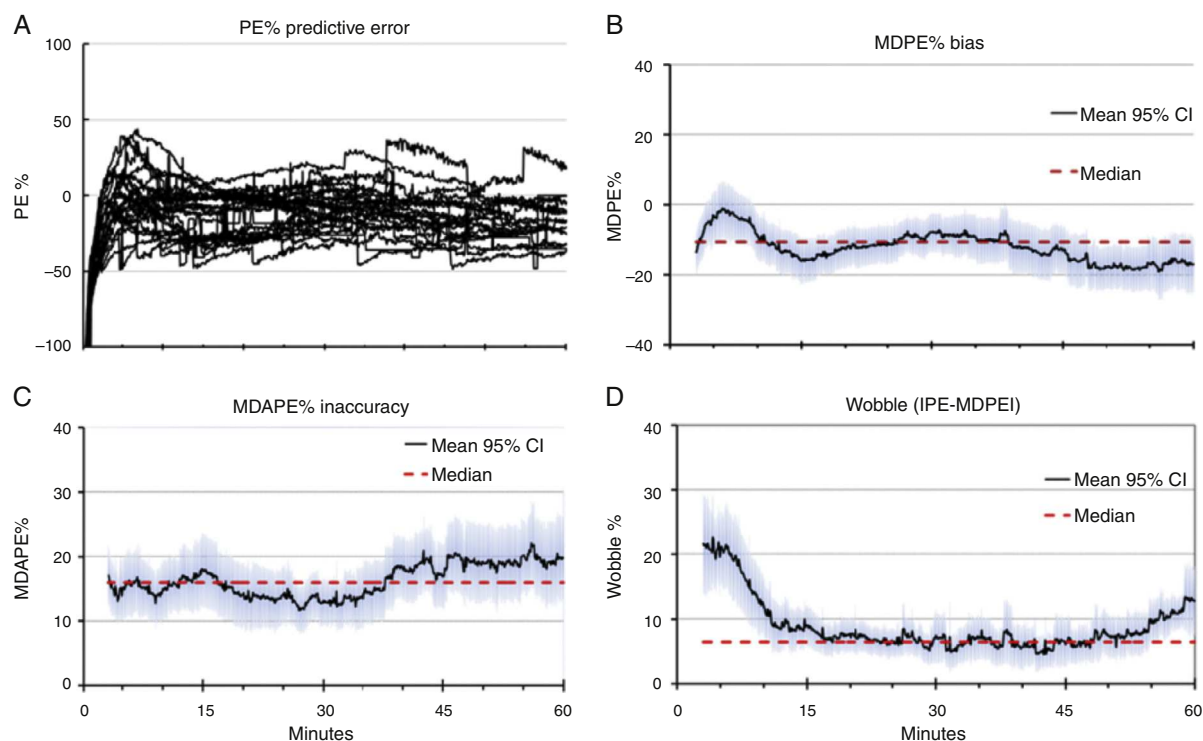
Age (years)	44.8	(37.0–52.5)
Weight (kg)	83.8	(76.0–91.7)
Height (cm)	176.0	(163.0–171.0)
Body surface (m <sup>2</sup> )	2.0	(1.9–2.1)
BMI (kg/m <sup>2</sup> )	30.0	(27.3–32.9)
Sex		
Male	13	(52%)
Female	12	(48%)
Obesity (BMI > 30)		
Yes	12	(48%)
No	13	(52%)
ASA classification		
ASA I	8	(32%)
ASA II	12	(48%)
ASA III	5	(20%)
Surgical specialty		
General surgery	19	(76%)
Maxillofacial surgery	4	(16%)
ENT	2	(8%)
Intravenous anesthesia		
Propofol (mg)	203.4	(182–225)
Remifentanyl (μg)	833.4	(592–1075)
Rocuronium (mg)	63.5	[50–65]*

Source: Authors.

Qualitative variables in absolute numbers (percentage).

Quantitative variables expressed as mean (CI 95%) and median [IQR].





**Fig. 2 – TCI sevoflurane performance in the first hour. (A) The predictive errors (PE) % of the 25 patients every 5 s in the first hour. (B–D) The bias (MDPE%) MDAPE% and wobble from minute 3 through 60;  $n = 14,761$  observations. The solid line represents the mean (95% CI) and the dashed line represents the median.**

Source: Authors.

centrations in each patient was high ( $r^2 = 0.766$ ) (Fig. 4). The performance every 5 s was represented in a PE% absolute value histogram (Fig. 5).

Among the variables collected, an association was found between the number of user's interactions per hour over the TCI <3 and MDAPE <15%, with  $p < 0.033$  and an Odds Ratio (95% CI)

of 7.77 (1.3–46.1). Age <65 years old was related to MDAPE <15% with a  $p < 0.039$  and an Odds Ratio of 0.381 (0.22–0.66). Obesity was related with MDAPE  $\geq 15\%$  with a significance of  $p < 0.036$  unilateral and an Odds Ratio (95% CI) of 4.5 (0.87–23.26). No association was found among the remaining parameters of the controller and grouped characteristics.

**Table 2 – TCI sevoflurane® performance.**

<b>Concentrations</b>	
Target used (% v/v)	1.22 [1.14–1.37] <sup>*</sup>
Inspired (% v/v)	1.38 [1.24–1.52] <sup>*</sup>
Expired (% v/v)	1.08 [0.99–1.21] <sup>*</sup>
<b>Time</b>	
To detect sevoflurane traces <sup>a</sup>	00:35 (00:32–00:38)
To reach the target inspired concentration <sup>a</sup>	01:28 (01:11–01:45)
To reach the target expired concentration <sup>a</sup>	04:07 [03:15–06:15] <sup>*</sup>
To extubate <sup>a,b</sup>	07:00 (06:11–7:48)
<b>Number of interaction in the 1st hour</b>	
Infusion time (h:min)	1:11 (0:57–1:25)
Consumption (ml)	6.9 (5.7–8.1)
Bias (MDPE%)	–12.8 (–17.6–(–8.1))
Inaccuracy (MDAPE%)	15.8 (12.1–19.6)
Wobble (%)	6.8 (5.0–8.6)
Divergence (%h <sup>-1</sup> )	0.9 (–6.0–7.7)

Source: Authors.

<sup>\*</sup> Expressed as mean (95% CI) and median [IQR].

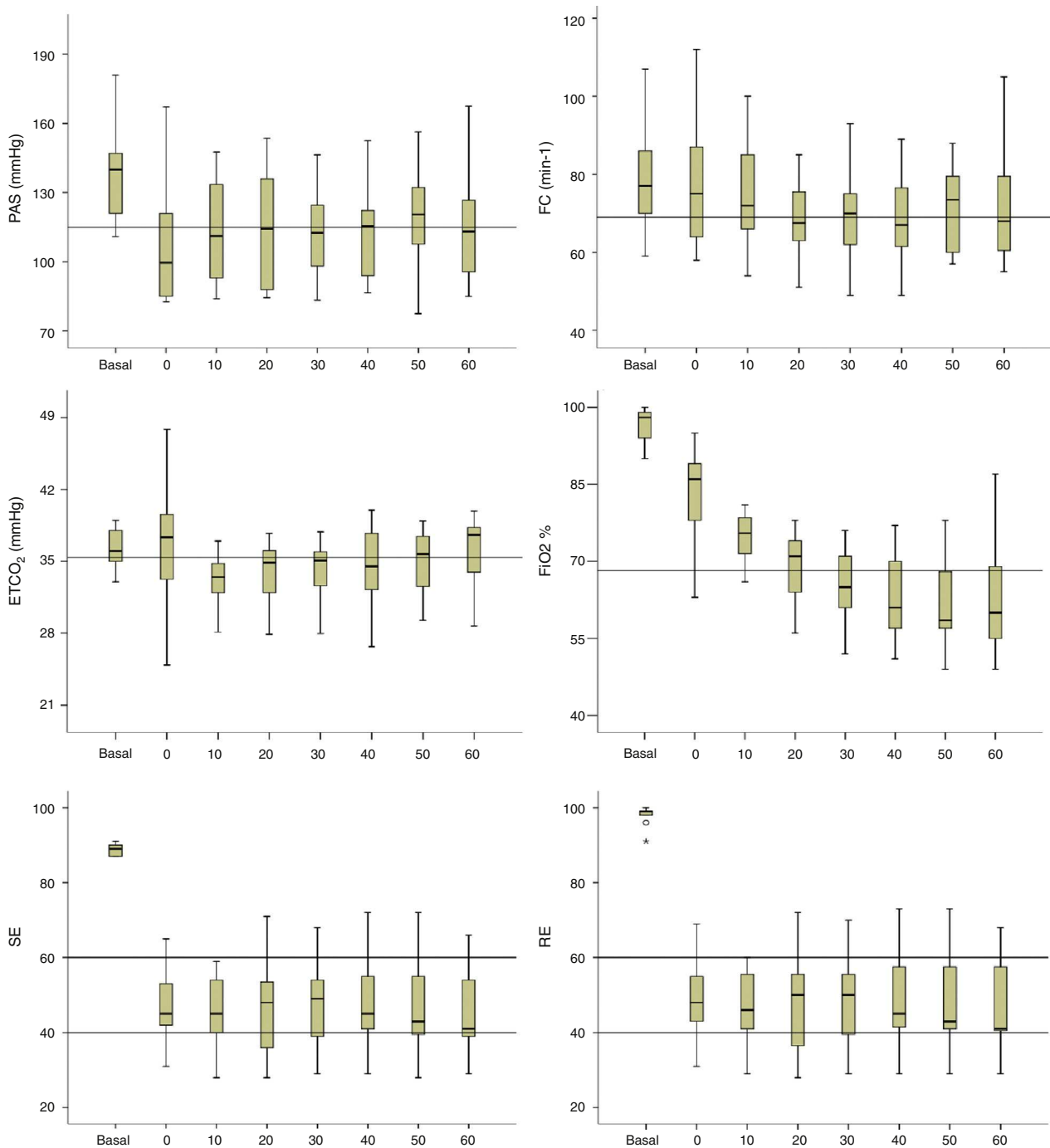
<sup>a</sup> Time (min:s).

<sup>b</sup> From the end of the sevoflurane infusion and circuit wash.

## Discussion

This study evaluated the predictive and clinical performance and the pharmacokinetic correlation of a sevoflurane TCI device, using MFA from the beginning of anesthesia. A target concentration of 1.2% (v/v) enabled a stable sevoflurane expired concentration. A 0.6 MAC maintained the stability of the hemodynamic, respiratory and depth of anesthesia parameters evaluated. The oxygen–air gas mixture used maintained the FiO<sub>2</sub> at safe levels during the 1-h evaluation (Fig. 3).

Traditionally, MFA has used modified FGF and changes in the vaporizer dial.<sup>33</sup> Its validation using sevoflurane showed an overdose of less than 20%<sup>34,35</sup>; on the contrary, TCI sevoflurane® showed less than 16% sub-dosing. TCI sevoflurane® detected halogenated compound traces and reached the target concentration in the expired branch in 35 s and 04:07 min respectively (Table 2). The AnaConDa™<sup>36</sup> device achieved the same parameters in 3:50 min and 13:09 min. TCI sevoflurane® reached the target concentration in less time due to the administration of a bolus in the first

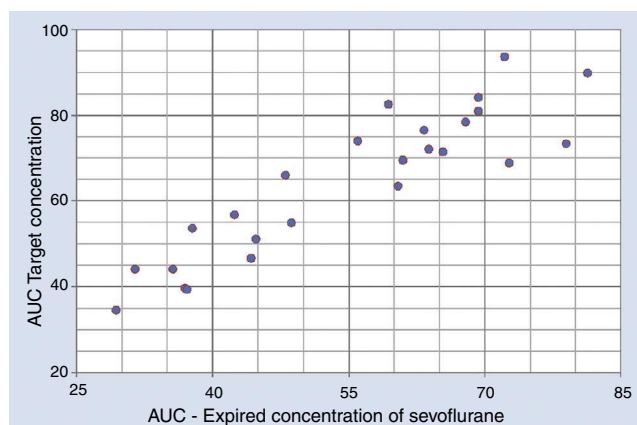


**Fig. 3** – Hemodynamic, respiratory and anesthetic depth parameters. The upper part shows the systolic blood pressure (SBP) and the heart rate (HR) with basal pre-induction values and every 10 min for the first TIC infusion hour. In the middle, the tele-expiratory CO<sub>2</sub> (ETCO<sub>2</sub>) and the oxygen inspired fraction (FiO<sub>2</sub>); the dividing lines represent the median. The lower section shows the state entropy (SE) and response entropy (RE); the dividing lines represent the accepted anesthetic depth range. The data are expressed as median [IQR]\*. Source: Authors.

minute; in contrast, AnaConDa™ requires a manual and constant infusion that delays the induction in the OR.

Time-to-extubation was 7 min in average, which is consistent with the three time constants ( $\tau = 2.5$  min) needed to washout 95% of the sevoflurane in the brain and with the three half-lives of the proportional first order equilibrium constant

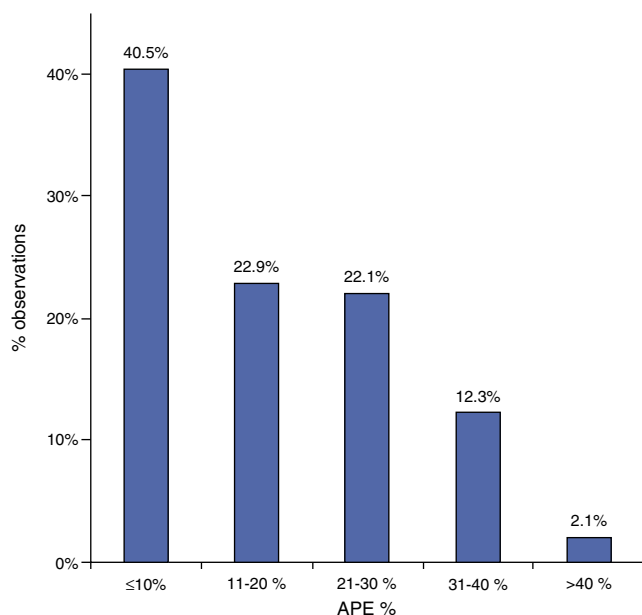
between the alveolus and the effect site ( $T_{1/2}$  Keo = 2.4 min).<sup>37</sup> TCI sevoflurane® enabled normocapnia using a tidal volume between 7 and 8 ml/kg; as opposed to the AnaConDa™ where the dead space requires an increased tidal volume of 10 ml/kg for preventing hypercapnia and water vapor condensation.<sup>36</sup> AnaConDa™ also absorbs the exhaled CO<sub>2</sub> that is re-inhaled



**Fig. 4 – The concentration–time area under the curve (AUC) correlation for target and expired concentrations of sevoflurane. Data every 5 s in the 25 patients; Spearman's rho of the AUC for each patient was 0.875. Source: Authors.**

in the following breath, creating a dead space equivalent to 180 ml additional to the 100 ml of internal volume. In the opinion of the authors, this effect should be studied and changed prior to the adoption of this device in the practice of anesthesia.<sup>38</sup>

Initially, the performance of TCI devices was considered acceptable with MDPE%  $\leq \pm 20\%$  and MDAPE% 20–40%.<sup>39</sup> Recently<sup>40</sup> a good performance has been accepted as MDPE%



**Fig. 5 – Sevoflurane TCI performance expressed in absolute value ranges for PE% (APE%). Ordered histogram of the APE% from minute 3 and every 5 s.  $n = 14,761$  observations. Clinical performance was defined as “optimal”, “Good”, “acceptable”, “inadequate” and “poor” when APE% was  $\leq 10\%$ , 11–20%, 21–30%, 31–40%, or  $>40\%$ , respectively. Source: Authors.**

$\leq \pm 15\%$  and MDPE%  $< 25\%$ , a condition that is achieved with TCI sevoflurane® (Table 3).<sup>39–43</sup>

The population age range in this study was wide (16–88); the association identified between MDAPE%  $\geq 15\%$  in patients over 65 years old may be explained by the presence of comorbidities as evidenced by the absence of ASA I patients in this group. In AnaConDa™ using the Enlund et al.<sup>44</sup> model, the MDAPE% was higher because of several reasons: use of a re-breathing circuit, (0.5–8%), inclusion of pediatric patients and 30-s induction. In contrast to Belda et al.<sup>45</sup> and Soro et al.<sup>46</sup> that found lower MDAPE%, using non-rebreathing circuits, fixed concentrations per groups of patients, narrow age ranges and a 10-min induction. Soro et al.<sup>46</sup> explained their differences to the Belda et al.<sup>45</sup> study because the evaluation time was less than an hour and their measurements were affected by the early fatty tissue uptake. In terms of the association between MDAPE%  $> 15\%$  and BMI  $> 30$ , TCI sevoflurane® showed differences; the first evaluation<sup>21</sup> did not include morbid obese patients, showing: positive MDPE%, low MDAPE% and wobble, with negative divergence. In the current evaluation, MDPE% was negative and the MDAPE% doubled, probably as a result of two factors: smaller calculated circuit volume and higher percentage of overweight and obesity in the population evaluated (Table 4).

TCI sevoflurane® showed an average sevoflurane consumption of 6.9 ml in 71 min. The closed loop ET Control®<sup>47</sup> device showed a higher consumption of sevoflurane of 11 ml/h. Our reduced consumption may be explained by the use of MFA from the start of the infusion and by the low concentration used. The ET Control® introduces automatic variations both in the FGF and in the electronic vaporizer dial.

TCI sevoflurane® environmental impact may be theoretically lower, because it uses half the MAC and one fourth of the FGF used in the Rian & Nielsen trial.<sup>8</sup>

The devices suggesting changes in the vaporizer and the FGF are able to temporarily reduce consumption; however, upon removal, FGF rises again and hence requires consistent supervision to maintain the reduction achieved.<sup>11,12,48</sup> As TCI sevoflurane® is constantly operating with MFA from the start, savings may be maintained upon its implementation.

Because TCI sevoflurane® is an open loop controller, it was unable to correct the biological variability on its own. The calculations neglected the absorption and degradation of sevoflurane due to the soda lime,<sup>29</sup> and the metabolism of sevoflurane (3–5%) was not corrected either. Consequently, the model may be optimized though it will never be perfect for every patient, as highlighted by Hendricks.<sup>49</sup> A gas analyzer will be then required to make all the adjustments. It is therefore recommended to do control group validations with vaporizer, include validated longer and safe procedures MFA<sup>5,6</sup> so that in the future TCI syringes may be available that include the sevoflurane option to simplify the MFA technique. Another potential development with this device is using the every 5-s gas analyzer measurements to automatically correct predictive errors with a fuzzy logic controller or PID (proportional-integral-derivative) controller. This would compensate the drift the area under the curve and the error trend, additionally using anesthetic depth measurements to adjust the halogenated agent expired concentration at the desired level of hypnosis, as has been

**Table 3 – Intravenous TCI performance.**

Model	n	Bias MPDE %	Inaccuracy MDAPE %	Wobble %	Divergence % h <sup>-1</sup>
<i>Propofol</i>					
1. Marsh. Morbidly obese patients <sup>41</sup>	20	-32.6	33.1	5.9	-1.5
2. Marsh. Healthy adults <sup>39</sup>	46	16.3	24.1	21.9	7.6
3. Marsh. Orientals <sup>42</sup>	27	14.9	23.3	18.9	-1.9
4. Schnider. Healthy adults <sup>40</sup>	9	-15.6	23.6	18.8	1.4
<i>Remifentanyl</i>					
5. Minto. Healthy adults <sup>43</sup>	30	-15.0	20.0		

Source: Authors.

**Table 4 – Inhalation devices performance.**

Device	n	Time (min)	BMI	Bias MDPE%	Inaccuracy MDAPE%	Wobble %	Divergence % h <sup>-1</sup>
1. Kennedy <sup>28</sup>	16	93	Not available	3.6	10.9	3.8	0.9
<i>AnaConDa™</i>							
2. Enlund <sup>44</sup>	38	248	26.0	[23.0-28.0]*	11.0	27.0	
3. Belda <sup>45</sup>	15	360	23.8	(23.7-27.8)	-5.0	5.0	0.9
4. Soro <sup>46</sup>	10	58	25.9	[23.8-27.0]*	-11.0	13.5	6.6
<i>TCI Sevoflurane©</i>							
5. Piloto <sup>21</sup>	10	60	27.1	(23.9-30.3)	2.0	8.3	6.9
6. Actual	25	60	30.0	(27.3-32.9)	-12.6	15.8	6.8

Source: Authors.  
3 and 4: sevoflurane 1% target concentration.  
\* Absolute data expressed as mean (95% CI), median [IQR].

published for isoflurane<sup>50</sup> and more recently for propofol<sup>51</sup> in our environment.

## Conclusions

TCI sevoflurane© showed a good performance, the target concentration was rapidly achieved and was maintained stable with few interactions needed with the device in the first hour. There were no overdoses or clinically significant disruptions, maintaining an adequate depth of anesthesia. A TCI for sevoflurane was available at a conventional workstation; the vaporizer was not used in this study, while the MFA was used from the start of the anesthesia, guided by the halogenated agent concentrations. Performance was similar to other devices used for the administration of inhaled anesthesia such as AnaConDa and intravenous TCIs. Keeping in mind the low consumption of sevoflurane observed in our study, we may then conclude that there was a reduction in labor exposure, environmental pollution and monetary costs.

## Funding

The authors' own resources.

## Conflicts of interest

The authors have no conflicts of interest to declare. The TCI sevoflurane© algorithm was written by César A. Candia Arana and programmed by Joaquín Roca González.

## Acknowledgements

Acknowledgement to José Antonio Álvarez Gómez, Head of Service, for their peerless contribution on this project for over 10 years and Ana Isabel Pérez Torres, PhD, for critical reading of the manuscript.

## REFERENCES

- Weinberg L, Story D, Nam J, McNicol L. Pharmacoeconomics of volatile inhalational anaesthetic agents: an 11-year retrospective analysis. *Anaesth Intensive Care*. 2010;38:849-54.
- Sherman J, Le C, Lamers V, Eckelman M. Life cycle greenhouse gas emissions of anesthetic drugs. *Anesth Analg*. 2012;114:1086-90.
- de Castro Jr J, Bolfi F, de Carvalho LR, Braz JR. The temperature and humidity in a low-flow anesthesia workstation with and without a heat and moisture exchanger. *Anesth Analg*. 2011;113:534-8.
- Candia CA. Anestesia Cuantitativa Estado Actual. *REVISIÓN*. *Rev Colomb Anestesiología*. 2001;29:33-41.
- Fukuda H, Kawamoto M, Yuge O, Fujii K. A comparison of the effects of prolonged (>10 hour) low-flow sevoflurane, high-flow sevoflurane, and low-flow isoflurane anaesthesia on hepatorenal function in orthopaedic patients. *Anaesth Intensive Care*. 2004;32:210-8.
- Marini F, Bellugi I, Gambi D, Pacenti M, Dugheri S, Focardi L, et al. Compound A, formaldehyde and methanol concentrations during low-flow sevoflurane anaesthesia: comparison of three carbon dioxide absorbers. *Acta Anaesthesiol Scand*. 2007;51:625-32.



7. Brattwall M, Warrén-Stomberg M, Hesselvik F, Jakobsson J. Brief review: theory and practice of minimal fresh gas flow anesthesia. *Can J Anaesth*. 2012;59:785-97.
8. Ryan SM, Nielsen CJ. Global warming potential of inhaled anesthetics: application to clinical use. *Anesth Analg*. 2010;111:92-8.
9. Feldman JM. Managing fresh gas flow to reduce environmental contamination. *Anesth Analg*. 2012;114:1093-110.
10. Kennedy RR, French RA. The development of a system to guide volatile anaesthetic administration. *Anaesth Intensive Care*. 2011;39:182-90.
11. Nair BG, Peterson GN, Neradilek MB, Newman SF, Huang EY, Schwid HA. Reducing wastage of inhalation anesthetics using real-time decision support to notify of excessive fresh gas flow. *Anesthesiology*. 2013;118:874-84.
12. Kennedy RR, French RA. Changing patterns in anesthetic fresh gas flow rates over 5 years in a teaching hospital. *Anesth Analg*. 2008;106:1487-90.
13. Hemmerling TM. Automated anesthesia. *Curr Opin Anaesthesiol*. 2009;22:757-63.
14. Lortat-Jacob B, Billard V, Buschke W, Servin F. Assessing the clinical or pharmaco-economical benefit of target controlled desflurane delivery in surgical patients using the Zeus anaesthesia machine. *Anaesthesia*. 2009;64:1229-35.
15. Tay S, Weinberg L, Peyton P, Story D, Briedis J. Financial and environmental costs of manual versus automated control of end-tidal gas concentrations. *Anaesth Intensive Care*. 2013;41:95-101.
16. Vagts DA, Lockwood GC. The uptake of sevoflurane during anaesthesia. *Anaesthesia*. 1998;53:862-6.
17. Hendrickx JFA, Van Zundert AAJ, De Wolf AM. Sevoflurane pharmacokinetics: effect of cardiac output. *Br J Anaesth*. 1998;81:495-501.
18. Enlund M, Lambert H, Wiklund L. The sevoflurane saving capacity of a new anaesthetic agent conserving device compared with a low flow circle system. *Acta Anaesthesiol Scand*. 2002;46:506-11.
19. Candia CA, Acosta EAR. Anestesia Cuantitativa Continua Asistida por Computador Evaluación de un Controlador de Asa Abierta. *Rev Colomb Anestesiología*. 2001;29:43-9.
20. Lowe HJ, Ernst EA. The quantitative practice of anesthesia - use of closed circuit. Baltimore: Williams and Wilkins; 1981.
21. Candia CA, Alvarez JA, Roca J. Predictive performance of an open-loop controller for sevoflurane with minimal fresh gas flow. *Eur J Anesth*. 2008;25 Suppl. 44:32 [3AP3-4].
22. Matsuura T, Oda Y, Tanaka K, Mori T, Nishikawa K, Asada A. Advance of age decreases the minimum alveolar concentrations of isoflurane and sevoflurane for maintaining bispectral index below 50. *Br J Anaesth*. 2009;102:331-5.
23. Kennedy RR, Minto C, Seethepalli A. Effect-site half-time for burst suppression is longer than for hypnosis during anaesthesia with sevoflurane. *Br J Anaesth*. 2008;100:72-7.
24. Soehle M, Ellerkmann RK, Grube M, Kuech M, Wirz S, Hoefl A, et al. Comparison between bispectral index and patient state index as measures of the electroencephalographic effects of sevoflurane. *Anesthesiology*. 2008;109:799-805.
25. Manyam SC, Gupta DK, Johnson KB, White JL, Pace NL, Westenskow DR, et al. Opioid-volatile anesthetic synergy: a response surface model with remifentanyl and sevoflurane as prototypes. *Anesthesiology*. 2006;105:267-78.
26. Mapleson WW. Effect of age on Mac in humans a meta-analysis. *Br J Anaesth*. 1996;76:179-85.
27. Lerou JG, Booij LH. Model-based administration of inhalation anaesthesia 1. Developing a system model. *Br J Anaesth*. 2001;86:12-28.
28. Kennedy RR, French RA, Spencer C. Predictive accuracy of a model of volatile anesthetic uptake. *Anesth Analg*. 2002;95:1616-21.
29. Liu J, Laster MJ, Eger II EI, Taheri S. Absorption and degradation of sevoflurane and isoflurane in a conventional anesthetic circuit. *Anesth Analg*. 1991;72:785-9.
30. Parra CJ. Esquema práctico para la anestesia cuantitativa. *Rev Colomb Anestesiología*. 1982;10:7.
31. Renfrew CW, Murray JM, Fee JP. A qualitative investigation into the physical stability of polypropylene and polyethylene in liquid isoflurane and sevoflurane. *Anaesthesia*. 2000;55:793-7.
32. Varvel J, Donoho D, Shafer S. Measuring the predictive performance of computer-controlled infusion pumps. *J Pharmacokinetic Biopharm*. 1992;20:63-94.
33. Mapleson WW. The theoretical ideal fresh-gas flow sequence at the start of low-flow anaesthesia. *Anaesthesia*. 1998;53:264-72.
34. Ip-Yam PC, Goh MH, Chan YH, Kong CF. Clinical evaluation of the Mapleson theoretical ideal fresh gas flow sequence at the start of low-flow anaesthesia with isoflurane, sevoflurane and desflurane. *Anaesthesia*. 2001;56:160-4.
35. Sobreira DP, Jreige MM, Saraiva R. The fresh-gas flow sequence at the start of low-flow anaesthesia. *Anaesthesia*. 2001;56:379-80.
36. Nishiyama T, Kohno Y, Ozaki M, Koishi K. Usefulness of an anesthetic conserving device (AnaConDa™) in sevoflurane anesthesia. *Minerva Anestesiologia*. 2012;78:310-4.
37. Candia CA. Controlador de asa abierta para sevoflurano con flujos mínimos guiado por entropía. *Rev Mex Anest*. 2009;32 Suppl. 1:S177-81.
38. Stureson LW, Malmkvist G, Bodelsson M, Niklason L, Jonson B. Carbon dioxide rebreathing with the anaesthetic conserving device. AnaConDa®. *Br J Anaesth*. 2012;109:279-83.
39. Swinhoe CF, Peacock JE, Glen JB, Reilly CS. Evaluation of the predictive performance of a 'Diprifusor' TCI system. *Anaesthesia*. 1998;53:61-7.
40. Glen JB, Servin F. Evaluation of the predictive performance of four pharmacokinetic models for propofol. *Br J Anaesth*. 2009;102:626-32.
41. Albertin A, Poli D, La Colla L, Gonfalanini M, Turi S, Pasculli N, et al. Predictive performance of 'Servin's formula' during BIS-guided propofol-remifentanyl target-controlled infusion in morbidly obese patients. *Br J Anaesth*. 2007;98:66-75.
42. Li YH, Xu JH, Yang JJ, Tian J, Xu JG. Predictive performance of 'Diprifusor' TCI system in patients during upper abdominal surgery under propofol/fentanyl anesthesia. *J Zhejiang Univ Sci B*. 2005;6:43-8.
43. Mertens MJ, Engbers FH, Burm AG, Vuyk J. Predictive performance of computer-controlled infusion of remifentanyl during propofol/remifentanyl anaesthesia. *Br J Anaesth*. 2003;90:132-41.
44. Enlund M, Kietzmann D, Bouillon T, Züchner K, Meineke I. Population pharmacokinetics of sevoflurane in conjunction with the AnaConDa: toward target-controlled infusion of volatiles into the breathing system. *Acta Anaesthesiol Scand*. 2008;52:553-60.
45. Belda JF, Soro M, Badenes R, Meiser A, García ML, Aguilar G, et al. The predictive performance of a pharmacokinetic model for manually adjusted infusion of liquid sevoflurane for use with the Anesthetic-Conserving Device (AnaConDa): a clinical study. *Anesth Analg*. 2008;106:1207-14.
46. Soro M, Badenes R, García-Pérez ML, Gallego-Ligorit L, Martí FJ, Aguilar G, et al. The Accuracy of the Anesthetic Conserving Device (Anaconda®) as an Alternative to the Classical Vaporizer in Anesthesia. *Anesth Analg*. 2010;111:1176-9.

47. Singaravelu S, Barclay P. Automated control of end-tidal inhalation anaesthetic concentration using the GE Aisys Carestation™. *Br J Anaesth.* 2013;110:561-6.
48. Ryu HG, Lee JH, Lee KK, Gil NS, Kim CS, Sim SE, Lee SC, Min SW. The effect of low fresh gas flow rate on sevoflurane consumption. *Korean J Anesthesiol.* 2011;60:75-7.
49. Hendrickx JF, De Wolf A. Special aspects of pharmacokinetics of inhalation anesthesia. *Handb Exp Pharmacol.* 2008:159-86.
50. Locher S, Stadler KS, Boehlen T, Bouillon T, Leibundgut D, Schumacher, et al. A new closed-loop control system for isoflurane using bispectral index outperforms manual control. *Anesthesiology.* 2004;101:591-602.
51. Gómez Oquendo FJ, Casas Arroyabe FD, Fernández JM, Guarín Grisales A. Anestesia total intravenosa en un sistema de lazo cerrado: reporte del primer caso en Colombia. *Rev Colomb Anesthesiol.* 2013;41:306-10.