



CIRUGÍA y CIRUJANOS

Órgano de difusión científica de la Academia Mexicana de Cirugía
Fundada en 1933

www.amc.org.mx www.elsevier.es/circir



CLINICAL CASE

Adult intestinal malrotation associated with intestinal volvulus[☆]



Ernesto Hernando-Almudí^{a,*}, Rafael Cerdán-Pascual^a, Cristina Vallejo-Bernad^a,
Joaquín Martín-Cuartero^b, María Sánchez-Rubio^a, Carmen Casamayor-Franco^a

^a Servicio de Cirugía General, Hospital Universitario Miguel Servet, Zaragoza, Spain

^b Servicio de Radiología, Hospital Universitario Miguel Servet, Zaragoza, Spain

Received 4 April 2016; accepted 17 May 2016

Available online 1 December 2017

KEYWORDS

Intestinal malrotation;
Intestinal volvulus;
Intestinal obstruction

Abstract

Background: Intestinal malrotation is a congenital anomaly of the intestinal rotation and fixation, and usually occurs in the neonatal age.

Objective: Description of a clinical case associated with acute occlusive symptoms.

Clinical case: A case of intestinal malrotation is presented in a previously asymptomatic woman of 46 years old with an intestinal obstruction, with radiology and surgical findings showing an absence of intestinal rotation.

Conclusions: Intestinal malrotation in adults is often asymptomatic, and is diagnosed as a casual finding during a radiological examination performed for other reasons. Infrequently, it can be diagnosed in adults, associated with an acute abdomen.

© 2016 Academia Mexicana de Cirugía A.C. Published by Masson Doyma México S.A. This is an open access article under the CC BY-NC-ND license (<http://creativecommons.org/licenses/by-nc-nd/4.0/>).

PALABRAS CLAVE

Malrotación intestinal;
Vólvulo intestinal;
Obstrucción intestinal

Malrotación intestinal en adulto asociada a vólvulo intestinal

Resumen

Antecedentes: La malrotación intestinal es una anomalía congénita de la rotación y fijación intestinal, que se presenta generalmente en la edad neonatal.

Objetivo: Descripción de un caso clínico asociado a un cuadro oclusivo agudo.

PII of original article: S0009-7411(16)30046-9

[☆] Please cite this article as: Hernando-Almudí E, Cerdán-Pascual R, Vallejo-Bernad C, Martín-Cuartero J, Sánchez-Rubio M, Casamayor-Franco M. Malrotación intestinal en adulto asociada a vólvulo intestinal. *Cirugía y Cirujanos*. 2017;85:424–427.

* Corresponding author at: Avenida de Madrid 191, 4B, 50017 Zaragoza, Spain. Tel.: +34 9765 32171/+34 6179 23385.

E-mail address: ernestohernando@gmail.com (E. Hernando-Almudí).

Caso clínico: Presentamos el caso de una mujer de 46 años, previamente asintomática, atendida por un cuadro de obstrucción intestinal, con el hallazgo radiológico y quirúrgico de una ausencia de rotación intestinal.

Conclusiones: La malrotación intestinal en el adulto, frecuentemente es asintomática, y se diagnostica de una forma casual, en el curso de una exploración radiológica realizada por otra causa. De forma infrecuente puede diagnosticarse en adultos, asociado a un cuadro de abdomen agudo.

© 2016 Academia Mexicana de Cirugía A.C. Publicado por Masson Doyma México S.A. Este es un artículo Open Access bajo la licencia CC BY-NC-ND (<http://creativecommons.org/licenses/by-nc-nd/4.0/>).

Background

The term Intestinal malrotation may be defined as: a congenital anomaly of the intestinal rotation and fixation during the development of the foetus. A great variety of anomalies exist and these may remain asymptomatic throughout life or be accompanied by acute abdomen, generally in the form of associated intestinal volvulus.¹

Changes in embryological intestinal development may occur in any of its phases and may be grouped in accordance with the corresponding development stage¹:

1. Non-rotation: here the small intestine is located on the right of the abdomen. The distal ileum crosses the midline to the caecum, located on the midline.
2. Incomplete rotation: the intestine occupies an intermediate position between non rotation and standard layout.
3. Inverse rotation: the duodenum crosses in front of the superior mesenteric artery, and the colon goes behind it. The duodenum is therefore in front, the superior mesenteric artery is behind it and behind this is the transverse colon.

In general malposition of the intestine in itself does not lead to problems, but it is often associated with bad intestinal adherence which may predispose to intestinal volvulus.

Clinical case

A patient aged 46 with no clinical history of note, presented at the emergency department with a three-day history of repeated vomiting and absence of bowel movements. The patient had previously presented at a hospital on 2 occasions, but without any organic causes. On this occasion symptoms included abdominal pain of epigastric origin, which was later diffuse. On examination the abdomen was found to be swollen and slightly painful, without peritoneal irritation.

Blood count was normal, biochemical studies revealed a slight increase in urea and creatine and a PCR of 2.4. A simple X-ray of the abdomen showed swelling of the small intestine loops, compatible with a partial bowel obstruction.

The patient was admitted to the service of digestive medicine and following exacerbation of pain during the



Figure 1 Intravenous contrast enhanced computed tomography axial imaging of the abdomen. Dilatation of small intestine loops and presence of ascitic fluid (asterisk). Abnormal position of caecum, located mid line (arrow).

next few hours, computed axial tomography (CAT) of the abdomen was requested. This showed swelling of the small intestine loops in the right abdomen, displacing the caecum to a posterior and central position (Fig. 1). There was also abundant free fluid indicative of loop impairment and focused grouping of mesenteric vessels, suggestive of internal hernia or torsion (Fig. 2). The radiologist suggested a primary diagnosis of pericaecal internal hernia. Retrospectively an inversion of mesenteric vessels was observed (Fig. 3).

A surgical assessment was requested and on examination the patient presented with a very swollen, diffusely painful abdomen, low peristalsis and considerable compromise of the patient's general health status.

Emergency surgery was performed, with an exploratory laparotomy, which revealed the beginning of an irreversible intestinal ischaemia of 150 cm of ileum and a large herniated sac in the right abdomen, with the caecum in medial position and almost 1 l of intra-abdominal fluid.

The herniated sac which contained dilated jejunum was opened and resected and we confirmed the existence of an intestinal malrotation existing from the angle of Treitz to the left of the mesenteric vessels, in addition to an intestinal volvulus (Figs. 4 and 5).

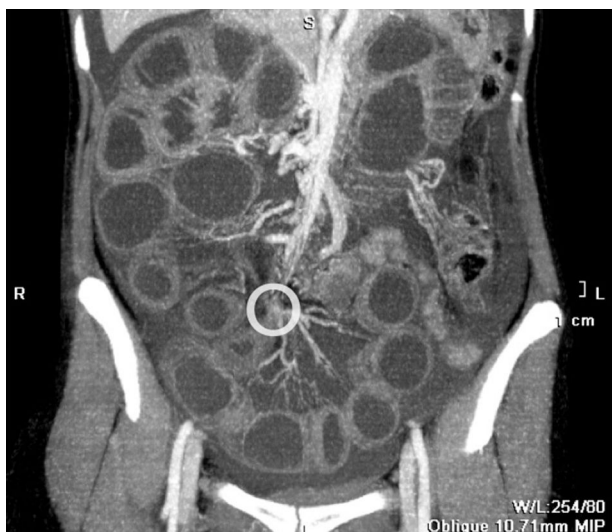


Figure 2 Coronal reconstruction of intravenous contrast enhanced computed tomography of abdomen. General dilation of small intestine loops and presence of ascitic fluid. Mesenteric vessels groups at volvulus axis level (circle), responsible for occlusion.

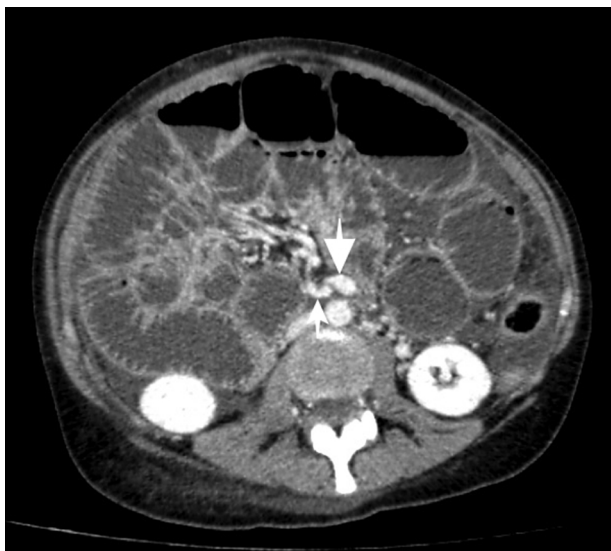


Figure 3 Intravenous contrast enhanced computed tomography axial imaging of the abdomen. Inversion of the mesenteric vessels, with superior mesenteric artery (thin arrow) located to the right of the superior mesenteric vein (thick arrow).

Removal of the largest part of the mesenteric sac and resection of 150 cm of the compromised intestine was performed, remaining 300 cm above and 16 cm from the end of the ileum, with side-to-side manual isoperistaltic anastomosis.

The postoperative period passed without event and the patient was discharged 7 days after surgery.

Discussion

Intestinal malrotation is determined by an interruption or alteration of the embryological development of the midgut,

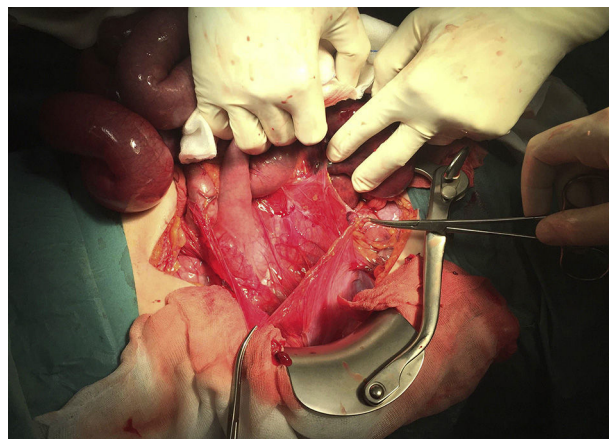


Figure 4 Mesenteric sac open and protrusion of jejunum at the angle of Treitz.

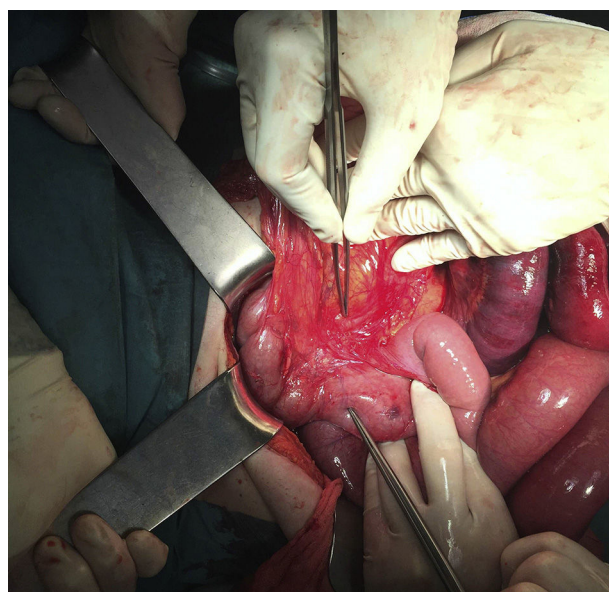


Figure 5 Anomalous position of the mesenteric vessels.

in any of its phases, whereby it divides into 2 parts through the superior mesenteric artery axis. The proximal part, which later becomes the duodenal-jejunal loop, is located above and anterior to the superior mesenteric artery. The distal part is posterior and inferior to the artery and becomes the ileum, ascending colon and proximal transverse colon.

Prevalence in adults is estimated to be 0.2%,² and it is mainly asymptomatic, and diagnosed as a casual finding during a radiological examination performed for other reasons. Diagnosis in adults is difficult due to low incidence and the CAT scan is the technique of choice.^{3,4}

What is characteristic about the CAT scan is the medial position of the caecum and the lateral position of the small intestine loops, and inversion of mesenteric vessels. In our case, which was complicated by a volvulus, there was dilation of the small intestine loops, free fluid and grouping of mesenteric vessels, similar to agitated vessels.

On other occasions we may refer to chronic symptoms with episodes of abdominal pain and vomiting, even evidence of malnutrition associated with malabsorption, due

to intermittent chronic volvulus. The incidence of intestinal volvulus is high (33% of cases) regardless of age, and acute abdomen should therefore be treated as an emergency.⁵

Defining the exact type of malrotation is of little clinical interest since they all predispose to volvulus, and the important point is to diagnose the existence of volvulus. Treatment is surgical, with devolvulation of the small intestine loops, releasing the membranes attached to them, separating the common meso colon and an appendectomy, given that the abnormal situation of the caecum inhibits a posterior diagnosis of appendicitis.

Conclusions

The clinical presentation of intestinal malrotation in an adult is asymptomatic in the majority of cases. Diagnosis is usually coincidental to radiological examination, usually from computed tomography performed for a different reason. It is infrequently associated with acute abdomen, where diagnosis occurs during laparotomy.

Conflict of interests

The authors have no conflict of interests to declare.

References

1. Berrocal T, Gayá F, de Pablo L. Aspectos embriológicos, clínicos y radiológicos de la malrotación intestinal. *Radiología*. 2005;47:237–51.
2. Von Flüe M, Herzog U, Ackermann C, Tondelli P, Harder F. Acute and chronic presentation of intestinal non-rotation in adult. *Dis Colon Rectum*. 1994;37:192–8.
3. Jiménez Fuentes M, Costa Navarro D, Zamora Amorós C. Dolor abdominal y malrotación intestinal en el adulto. *Rev Esp Enferm Dig*. 2013;105:105–6.
4. Gallarín Salamanca IM, Espín Jaime MT, Moreno Puertas ÁE, Salas Martínez J. Malrotación intestinal inusual en paciente adulto. *Cir Esp*. 2016;94:21–3.
5. Etchevers J, Palermo M, Salvatore MG, Tarsitano F, Villafañe V. Malrotación intestinal en adultos: causa infrecuente de abdomen agudo oclusivo. *Rev Argent Radiol*. 2008;72:435–8.