

primary haemostasis in 90–100% of cases.² There are several endoscopic therapeutic options available,^{2,5,6} with better results reported with mechanical methods, as well as with combination therapy compared to monotherapy.^{2,4,8}

However, despite advances in endoscopy in this field having led to a dramatic reduction in the mortality rate from DL-related bleeding (from 80% to 8%), relegating surgery to the background,⁴ the risk of re-bleeding in these patients is estimated to range from 9% to 40%.²

This makes the diagnosis and treatment of DL extremely challenging in a not insignificant number of cases, which explains the growing interest in the study of other minimally invasive techniques as alternatives to endoscopy, such as arteriography with selective embolisation^{4,7} or EUS.^{1,2,5,8}

In recent years, EUS has been singled out as a technological resource of great utility in the management of DL,^{2,3,5,9} particularly in cases where endoscopy has previously failed. With Doppler ultrasound, the trajectory of the malformed submucosal vessel can be demarcated with great precision, and selective sclerosis performed on it by injecting substances such as adrenaline or ethanol.^{3,4,9} Furthermore, Doppler ultrasound can also be used to confirm successful ablation of the lesion after treatment, using Doppler to demonstrate absence of flow in the malformed artery.^{2,3}

Our case provides a clear example of the role of EUS in the management of recurrent DL-related bleeding, as this was the decisive technique in our patient in controlling DL refractory to endoscopic treatment.

References

1. Lee YT, Walmsley RS, Leong RW, Sung JJ. Dieulafoy's lesion. *Gastrointest Endosc.* 2003;58:236–43.
2. Jeon HK, Kim GH. Endoscopic management of Dieulafoy's lesion. *Clin Endosc.* 2015;48:112–20.
3. Law R, Fujii-Lau L, Wong Kee Song LM, Gostout CJ, Kamath PS, Abu Dayyeh BK, et al. Efficacy of endoscopic ultrasound-guided hemostatic interventions for resistant nonvariceal bleeding. *Clin Gastroenterol Hepatol.* 2015;13:808–12.
4. Lee YT, Walmsley RS, Leong WL, Sung JJY. Dieulafoy's lesion. *Gastrointest Endosc.* 2013;58:236–43.
5. González-Sánchez CB, Orozco-Monroy G, Leycegui-Aiza M, Eljore-Eljore M, Martínez-de la Maza E. Lesión de Dieulafoy, aspectos generales de diagnóstico y tratamiento. *Endoscopia.* 2010;22:161–5.
6. Saleh R, Lucerna A, Espinosa J, Scali V. Dieulafoy lesion: the little known sleeping giant of gastrointestinal bleeds. *Am J Emerg Med.* 2016;34:2464.e3–5.
7. Batouli A, Kazemi A, Hartman MS, Heller MT, Midian R, Lupetin AR. Dieulafoy lesion: CT diagnosis of this lesser-known cause of gastrointestinal bleeding. *Clin Radiol.* 2015;70:661–6.
8. Baxter M, Aly EH. Dieulafoy's lesion: current trends in diagnosis and management. *Ann R Coll Surg Engl.* 2010;92:548–54.
9. Vila JJ, Pérez-Miranda M, Basterra M, Gómez M, Fernández-Urién I, Jiménez FJ. Endoscopic ultrasound-guided therapy of a rectal Dieulafoy lesion. *Endoscopy.* 2014;46:E84–5.

Irene García de la Filia, Nerea Hernanz,
Enrique Vázquez Sequeiros, Eduardo Tavío Hernández*

Servicio de Gastroenterología y Hepatología, Hospital Universitario Ramón y Cajal, Madrid, Spain

* Corresponding author.

E-mail address: eduardo.tavio@salud.madrid.org

(E. Tavío Hernández).

2444-3824/

© 2017 Elsevier España, S.L.U. All rights reserved.

An unusual cause of acute liver failure: Tumour infiltration by neuroendocrine carcinoma[☆]



Una causa inusual de fallo hepático agudo: infiltración tumoral por carcinoma neuroendocrino

Acute liver failure (ALF) is a rare condition with rapid onset and a high mortality rate characterised by coagulopathy, with INR > 1.5, and any degree of encephalopathy in a patient without prior liver disease.¹ Some of the most common causes are toxicity to drugs such as paracetamol, viral hepatitis, autoimmune hepatitis, Wilson's disease and ischaemic hepatitis.^{1,2} Although haematogenous spread of solid tumours often affects the liver, ALF caused by the

spread of cancer is very uncommon, with few cases reported in the literature. In a study conducted in the United Kingdom over 18 years (1978–1995), this situation was documented in only 0.44% of patients, with cancers of haematological origin being the most common cause.³ In another more recent American multicentre study conducted by the Acute Liver Failure Study Group, which reviewed 1910 patients with ALF from 1998 to 2012, only 27 patients (1.4%) were identified with ALF secondary to tumour infiltration.⁴

The liver parenchyma is replaced by cancer cells which propagate sinusoidally, causing hepatocellular ischaemia and releasing pro-inflammatory cytokines. The increase in AST, LDH and hepatomegaly support this hypothesis; fulminant hepatic failure triggers multiple-organ failure, with a high mortality rate of 60–80%.⁵ The confirmation diagnosis is made by liver biopsy and in most cases is performed *postmortem*.^{3,6–9}

We present the case of a 66-year-old male shepherd, ex-smoker (40 pack/years), moderate drinker, who had chronic bronchitis with home CPAP and hypertriglyceridemia. He had a ten-day history of upper respiratory tract infection, with no pyrexia, treated with levofloxacin and prednisone, with abdominal distension, meteorism and oliguria. He did not report the use of drugs of abuse or other hepatotoxic

[☆] Please cite this article as: de Cima Iglesias S, Viña Soria L, Martín Iglesias L, Astola Hidalgo I, López-Amor L, Escudero Augusto D. Una causa inusual de fallo hepático agudo: infiltración tumoral por carcinoma neuroendocrino. *Gastroenterol Hepatol.* 2018;41:320–323.

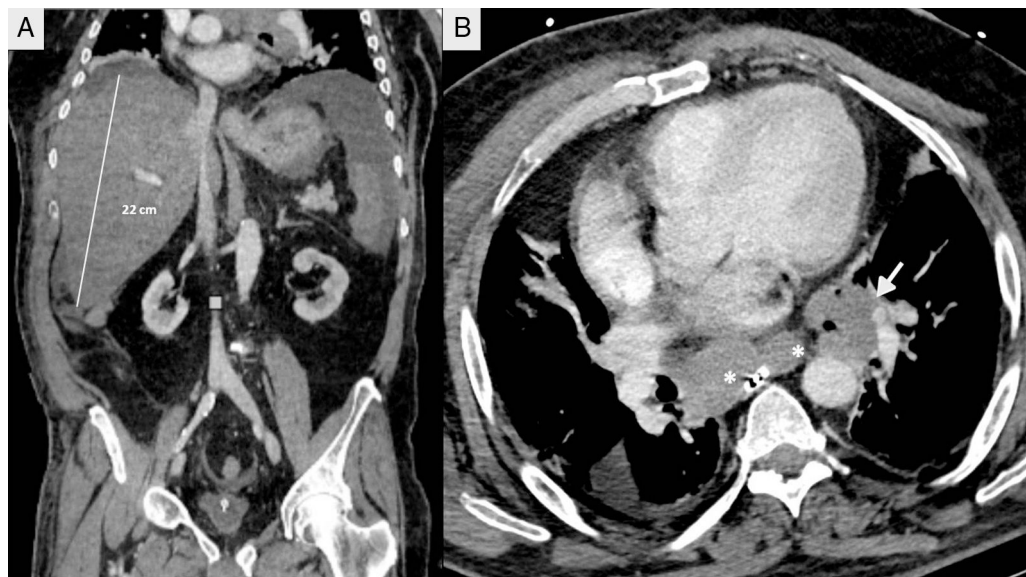


Figure 1 Thoracic/abdominal multi-slice CT with IV contrast. (A) Axial section of the thorax showing enlarged lymph nodes in the subcarinal region (*) and left hilar region (white arrow). (B) Coronal section showing a large homogeneous hepatomegaly.

substances. He had no general symptoms, weight loss or family history of liver disease. On admission, a chest-abdomen CT was performed, showing marked hepatomegaly with an anteroposterior axis in the axial section of 30 cm and 22 cm in the coronal section, no focal lesions identified, with normal biliary tract and large subcarinal mediastinal masses of enlarged lymph nodes (Fig. 1). He was admitted to the internal medicine department initially with the following blood results: blood glucose 104 mg/dl, creatinine 1.13 mg/dl, urea 67 mg/dl, sodium 142 mmol/l, potassium 4 mmol/l, AST 266 U/l, ALT 457 U/l, alkaline phosphatase 174 U/l, GGT 1033 U/l, total bilirubin 2.5 mg/dl, amylase 87 U/l; normal blood count, coagulation: PT 79%, INR 1.17, derived fibrinogen 550 mg/dl; arterial blood gases: pH 7.45, pCO₂ 35 mmHg, pO₂ 71 mmHg, bicarbonate 24.5 mM/l and base excess +1.6 mM/l. The patient made poor clinical progress, with liver failure (AST 4791 U/l, ALT 2301 U/l, alkaline phosphatase 286 U/l, GGT 739 U/l, total bilirubin 12.2 mg/dl, LDH 5470 U/l, ammonium 106 mmol/l, coagulopathy with PT 28% and INR 2.79), acute oliguric renal failure (creatinine 3.8 mg/dl, urea 105 mg/dl), amylase 165 U/l, lipase 185 U/l, CK 1866 U/l, potassium 7 mmol/l, blood glucose 34 mg/dl and metabolic acidosis with pH 7, lactate 13 mmol/l and base excess -20 mM/l. Given his poor progress, he was transferred to the intensive care unit (ICU), requiring orotracheal intubation and connection to mechanical ventilation due to acute respiratory failure, haemodynamic instability and neurological deterioration in relation to metabolic encephalopathy. On examination, the patient's abdomen was very distended, tympanic and diffusely painful on palpation. Viral serology for hepatitis A, B, C and E was negative. Cytomegalovirus, syphilis, Epstein-Barr virus and herpes simplex virus were all negative. Serology for *Leptospira* was negative. Monoclonal antibody CA 72.4 and squamous cell-associated antigen negative. Autoimmunity studies (rheumatoid factor, ANA, AMA, ANCA and anti-smooth muscle) negative. Blood and urine cultures were negative.

Leucocytes 19,300 without marked neutrophilia and procalcitonin 4.47 ng/ml. The patient suddenly went into distributive shock refractory to the usual supportive treatment including vasopressor drugs, high-dose corticosteroids, continuous renal replacement techniques and empirical treatment with meropenem. He died 12 h after being admitted to ICU. A post-mortem examination was carried out and the Pathology report confirmed the proliferation in the liver of chaotically distributed nested tumours which had surrounded and destroyed portal spaces and central veins, widening the sinusoids, trapping the hepatocytes and replacing them with fibrosis (Fig. 2). No masses or obstructions of infra- or suprahepatic vascular structures were identified. Hilum appeared normal. Mediastinal masses of enlarged lymph nodes of tumour-like appearance; subcarinal of 6 cm × 4 cm, bilateral para-tracheal of 8 cm × 3 cm and para-aortic on the anterior side of the arch of 4 cm × 3 cm. There was no compression of venous circulation in this area. Growth of the same type of cells was also observed in the mediastinal and para-aortic lymph nodes. Immunohistochemical study (Fig. 2) was positive for chromogranin, CD56, PGP9.5 and focally with weak intensity for CK7, concluding that it was a WHO grade 2 of 3, large cell neuroendocrine carcinoma (2 mitosis/10 high power field [HPF] and Ki-67 of 5%), with massive infiltration of the liver and mediastinal lymphadenopathy, without identifying the primary lesion.

Neuroendocrine tumours are a very heterogeneous group of tumours that produce hormones and can arise in any organ. Within this type of cancer, neuroendocrine carcinomas are poorly differentiated tumours with a high rate of proliferation and very aggressive behaviour that tend to already have metastasis at the time of diagnosis. Some 13% begin with unknown primary tumour⁹ and the most common location is the gastrointestinal tract. The Ki-67 index classifies them histologically, grade 2 tumours being those with a Ki-67 index of 3–20%. Other indicators of poor prognosis are high levels of chromogranin A (CGA) and the mitotic index.¹⁰

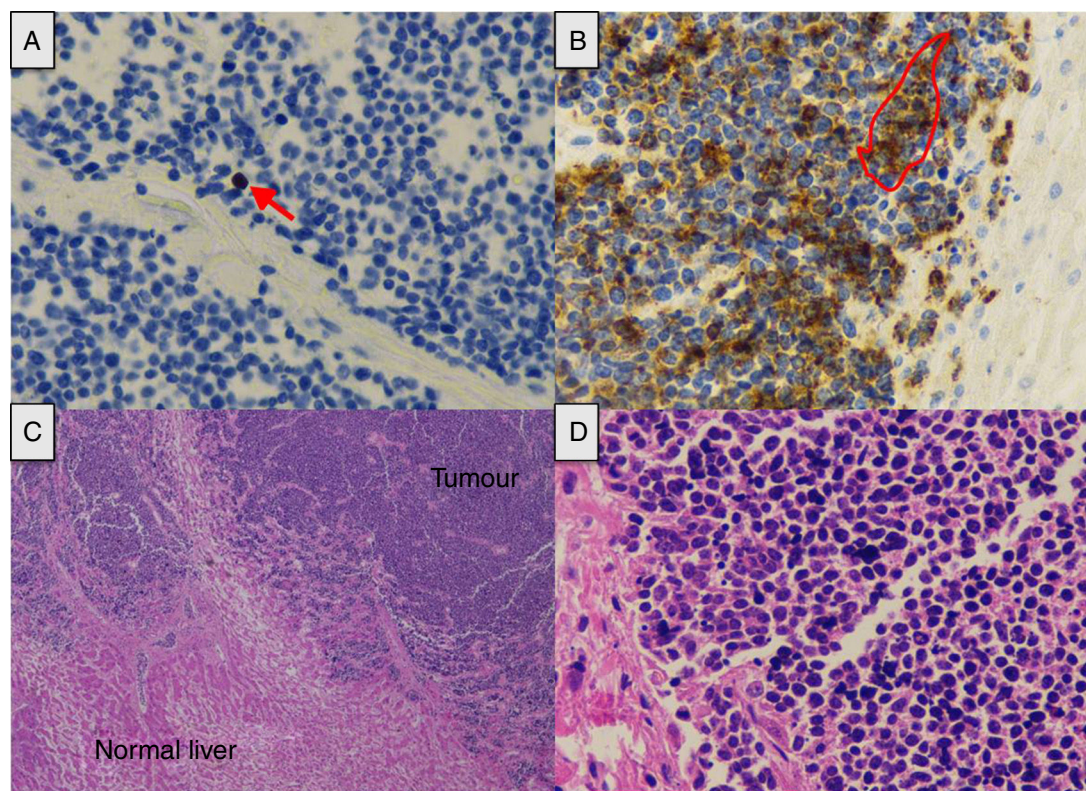


Figure 2 (A) Tumour proliferation index (arrow) (Ki-67 $\times 40$). (B) The tumour cell expresses chromogranin in its cytoplasm as a marker of neuroendocrine differentiation (contour) (chromogranin $\times 40$). (C) Extensive tumour infiltration (haematoxylin-eosin $\times 2$). (D) The nuclear distribution of chromatin is similar to that referred to as "salt and pepper" (haematoxylin-eosin $\times 40$).

We are reminded by this case report that ALF with multiple organ failure due to tumour infiltration is a possibility and, although uncommon, has to be taken into consideration. In our case, neither the medical history nor the imaging tests helped us establish the diagnosis and we were only able to confirm it post-mortem.

Acknowledgements

To the Pathology Department at Hospital Universitario Central de Asturias and Drs María Aurora Astudillo and Guillermo Eduardo Mendoza.

To the Radiology Department at Hospital Universitario Central de Asturias and Dr Alicia Mesa.

References

- Singanayagam A, Bernal W. Update in acute liver failure. *Curr Opin Crit Care*. 2015;21:134–41.
- Lee WM. Recent developments in acute liver failure. *Best Pract Res Clin Gastroenterol*. 2012;26:3–16.
- Rowbotham D, Wendon J, Williams R. Acute liver failure secondary to hepatic infiltration: a single centre experience of 18 cases. *Gut*. 1998;42:576–80.
- Rich NE, Sanders C, Hughes RS, Fontana RJ, Stravitz RT, Fix O, et al. Malignant infiltration of the liver presenting as acute liver failure. *Clin Gastroenterol Hepatol*. 2015;13:1025–8.
- García-Carbonero R, Aller J, Martín E, Sevilla I. Manual de diagnóstico y tratamiento de los tumores neuroendocrinos o Manual GETNE. 2.^a ed; 2013. Available from: <http://www.getne.org/%C3%81readeProfesionales/MaterialdetrabajoenTNEs.aspx> [accessed 26.01.17].
- Veloso N, Amaro P, Ferreira M, Romãozinho JM, Sofia C. Acute liver failure secondary to hepatic infiltration by poorly differentiated neuroendocrine tumor. *Gastroenterol Hepatol*. 2014;37:356–7.
- Spigel DR, Hainsworth JD, Greco FA. Neuroendocrine carcinoma of unknown primary site. *Semin Oncol*. 2009;36:52–9.
- Willars C. Update in intensive care medicine: acute liver failure Initial management, supportive treatment and who to transplant. *Curr Opin Crit Care*. 2014;20:202–9.
- Alexopoulou A, Koskinas J, Deutsch M, Delladetsima J, Kountouras D, Dourakis SP. Acute liver failure as the initial manifestation of hepatic infiltration by a solid tumor: report of 5 cases and review of the literature. *Tumori*. 2006;92:354–7.
- Pavel M, Baudin E, Couvelard A, Krenning E, Öberg K, Steinmüller T, et al. ENETS Consensus Guidelines for the management of patients with liver and other distant metastases from neuroendocrine neoplasms of foregut, midgut, hindgut, and unknown primary. *Neuroendocrinology*. 2012;95:157–76.

Sara de Cima Iglesias*, Lucía Viña Soria, Lorena Martín Iglesias, Iván Astola Hidalgo, Lucía López-Amor, Dolores Escudero Augusto

Servicio de Medicina Intensiva, Hospital Universitario Central de Asturias, Oviedo, Asturias, Spain

*Corresponding author.

E-mail address: sarade.cima@hotmail.com

(S. de Cima Iglesias).

2444-3824/

© 2017 Elsevier España, S.L.U. All rights reserved.

Portal hypertension secondary to multiple hepatic hemangiomas[☆]



Hipertensión portal secundaria a hemangiomas hepática múltiple

Haemangioma is the most common benign liver tumour, with a prevalence of 20% in the population. They behave as solitary nodules, usually asymptomatic and smaller than 5 cm in size, although rarely they can be larger, become associated with consumptive coagulopathy (Kasabach–Merritt syndrome) or be diffuse, affecting the whole liver.

We report the case of a patient with multiple hepatic haemangiomas (hepatic haemangiomatosis) (HH) with replacement of the liver parenchyma causing portal hypertension and its associated complications.

This was a 46-year-old man with no relevant history who came to the emergency department with abdominal distension, with giant rock-hard hepatomegaly and abdominal collateral circulation found on examination. Blood tests showed abnormal liver function, predominantly cholestatic, with normal bilirubin, albumin and platelets, and mild coagulation abnormalities. Alpha-fetoprotein levels were within normal range. Liver function tests (virus serology, autoimmunity and metabolic disorders) showed no abnormalities, and there was no evidence of previous ingestion of drugs or toxic substances.

The initial abdominal ultrasound revealed giant hepatomegaly taking up almost the entire abdomen, with a very heterogeneous structure and countless space-occupying lesions suggestive of angiomas, which were confirmed by contrast ultrasound, magnetic resonance imaging and abdominal CT. The CT scan also showed vascular compression of the portal branches, intrahepatic cava and left suprahepatic, although they remained patent, with venous bypass through the azygos system, and a normal spleen. The diagnostic process was completed with Tc-99m red blood cell and colloid scintigraphy, which showed de-structured parenchyma and a pattern of uptake highly specific to HH lesions. Paracentesis was performed and ascitic fluid was found to have a serum-to-ascites albumin gradient of 1.1. Gastroscopy showed portal hypertensive gastropathy with no oesophageal varices. Given the highly specific radiological findings of HH occupying virtually all of the liver

parenchyma, no liver biopsy was performed because of the complexity of the technique and the risk of causing further damage.

The patient's clinical progress was slow; the ascites was difficult to control and he developed spontaneous bacterial peritonitis. He is currently being assessed for liver transplantation, with diagnoses of HH with replacement of liver tissue and development of PH, and Child–Turcotte–Pugh grade B7 and Model for End Stage Liver Disease (MELD) 10 liver failure (Figs. 1 and 2).

Hepatic haemangiomas are the most common benign tumours of the liver, with very low likelihood of malignancy. They usually occur in young women, in the form of single small lesions. If larger than 5 cm or if the involvement is diffuse, they can be accompanied by symptoms such as pain in the upper abdomen, nausea and early satiety; or cause complications such as rupture of the haemangioma and compression or thrombosis of adjacent structures.^{1–3}

PH is a seldom reported consequence of haemangiomas and has generally been related to the physical compression of the portal vein in giant lesions, with portal vein thrombosis also a risk.⁴ In our patient, the development of PH and its consequences was associated not only with the mechanical compression of vascular structures, but also the replacement of the liver tissue, leading to secondary liver failure.

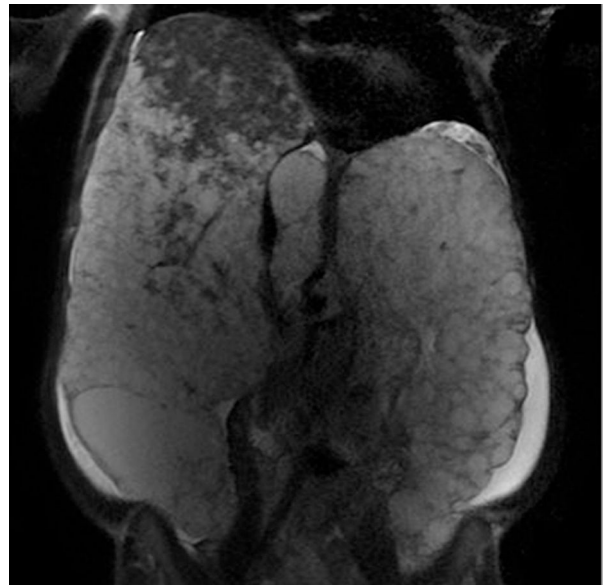


Figure 1 Massive hepatomegaly occupying the entire abdominal cavity (magnetic resonance). Shows liver parenchyma respected only in the upper part of the right hepatic lobe.

[☆] Please cite this article as: Hidalgo Romero Á, Gómez Domínguez E, Muñoz Gómez R, Muñoz Codoceo C, Fernández Vázquez I. Hipertensión portal secundaria a hemangiomas hepática múltiple. *Gastroenterol Hepatol.* 2018;41:323–324.