



## IMAGE OF THE MONTH

## An infectious etiology of esophageal cancer spreading from endemic to non-endemic areas



### Una etiología infecciosa del cáncer de esófago que se propaga de zonas endémicas a no endémicas

Leonardo G. da Fonseca\*, Pedro H. Hashizume

*Clinical Oncology, Instituto do Cancer do Estado de São Paulo, University of São Paulo, Brazil*

A 62-year-old man from a rural area in Brazil presented with progressively worsening dysphagia over 2 years. An upper gastrointestinal-endoscopy showed an enlargement of the esophagus and an infiltrative lesion located 25 cm from the upper incisor teeth (Fig. 1A). Biopsy revealed a squamous cell carcinoma (SCC) and serologic test for *Trypanosoma cruzi* was positive. Positron-emission tomography showed an increased glycolytic metabolism in a semicircular thickening of the esophageal left anterolateral wall (Fig. 1B and C). These findings were consistent with the diagnosis of locally-advanced SCC and Chagasic megaesophagus. A nasogastric feeding tube was fitted and chemotherapy (cisplatin/5-fluorouracil) was started. After 3 months, the

patient presented with progressive disease and eventually died due to recurrent pneumonia.

Chagas disease is a tropical disease caused by the protozoan *Trypanosoma cruzi*. It is transmitted to humans by *Triatominae* insects, found in rural areas of Latin America, Asia and Africa.<sup>1</sup> Migratory flows have spread the disease worldwide. The United States and Spain are the non-endemic countries with more cases.<sup>2</sup> Approximately 30% of infected individuals develop chronic stage disease. Gastrointestinal motor disorders, such as achalasia/megaesophagus, are a result of enteric nervous system injury caused by the protozoan.<sup>3</sup> Among patients with Chagasic megaesophagus, an increased incidence of SCC is expected.

\* Corresponding author.

E-mail address: [l.fonseca@fm.usp.br](mailto:l.fonseca@fm.usp.br) (L.G. da Fonseca).

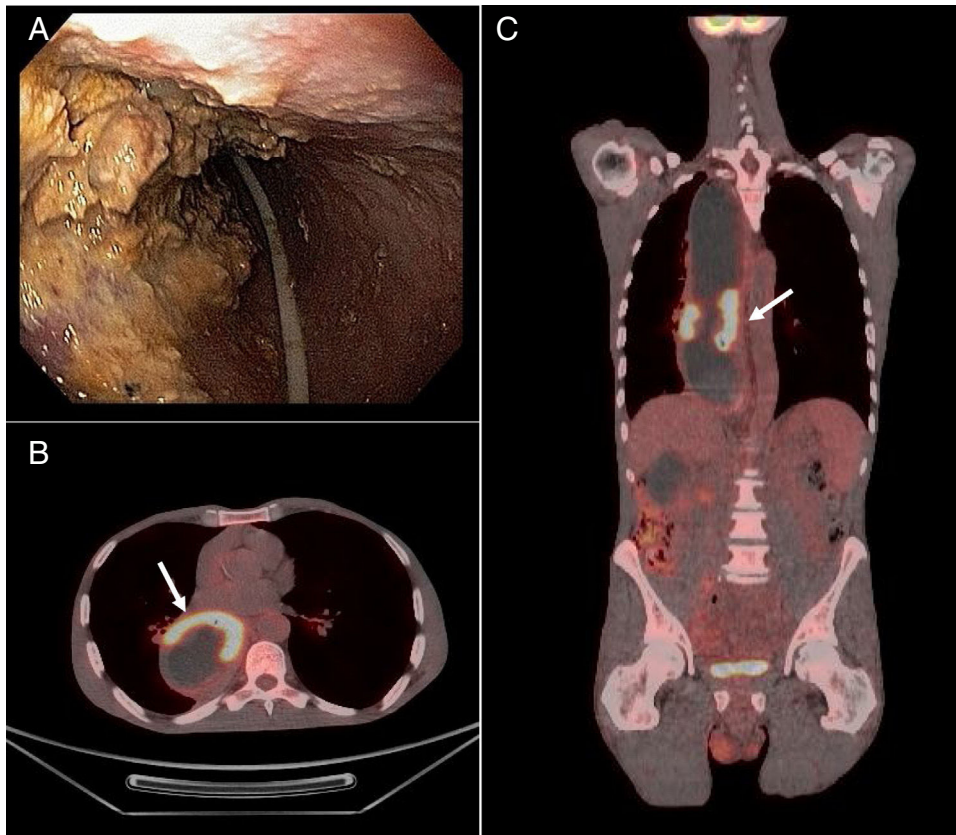


Figure 1

### Conflict of interests

Da Fonseca, LG: lecture fees from Bayer and Roche.  
Hashizume, PH: nothing to declare.

### References

- Oliveira RB, Troncon L, Dantas R, Meneghelli U. Gastrointestinal manifestations of Chagas' disease. *Am J Gastroenterol.* 1998;93:884–9, <http://dx.doi.org/10.1111/j.1572-0241.1998.270.r.x>.
- Schmunis GA, Yadon ZE. Chagas disease: a worldwide new challenge. *Nature.* 2010;115:14–21, <http://dx.doi.org/10.1016/j.actatropica.2009.11.003>.
- Sánchez-Montalvá A, Moris M, Mego M, Salvador F, Accarino A, Ramírez K, et al. High resolution esophageal manometry in patients with Chagas disease: a cross-sectional evaluation. *PLoS Negl Trop Dis.* 2016;10:e0004416, <http://dx.doi.org/10.1371/journal.pntd.0004416>.