



CLÍNICA E INVESTIGACIÓN EN ARTERIOSCLEROSIS

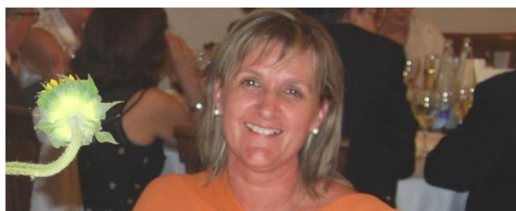
www.elsevier.es/arterio



IN MEMORIAM

Dr Esperanza María Martorell Mateu[☆]

Doctora Esperanza María Martorell Mateu



Just a few days after the 31st SEA Conference in Girona, we received the sad news that our dear associate, colleague and friend Esperanza had left us forever. We were quite shocked to learn of her sudden serious condition, hospital admission and passing on 17 June, as we had just taken part alongside her in the conference sessions and social events. Life gave us the gift of an extraordinary person, and, without warning, life took that gift away, leaving a great void in her place. Esperanza means "hope". Not only did we lose Esperanza, we lost some of the very meaning of her name—the hope of enjoying her company. Nevertheless, we feel fortunate that we were able to take part with her in so many projects, conferences, courses, consultations and other experiences. Our time together has left us with indelible memories.

Esperanza was born in Lloseta (Mallorca). She studied Biological Sciences at the University of the Balearic Islands as well as Medicine at the University of Zaragoza and the Autonomous University of Barcelona. She earned a doctor-

ate degree from the latter institution in 2007. In her career as a specialist in internal medicine, she distinguished herself by her sense of responsibility, extreme attentiveness, cordial nature and kindness at Hospital Son Dureta, Hospital de Son Llàtzer and Hospital Comarcal de Inca. She was a member of the board of directors of the SEA from 2012 to 2014. She was a driving force behind as well as a member of the board of directors of the Balearic Islands Hypertension and Vascular Risk Association (SOHIB). She dedicated herself to dyslipidaemia research, diagnosis and treatment in the Balearic Islands, and headed the Lipid Unit at Hospital Comarcal de Inca. Esperanza was a pioneer in identifying families with hypercholesterolaemia and in establishing a genetic map of LDL receptor mutations for the island of Mallorca. This represented a significant contribution to the development of the LIPOchip diagnostic tool. It also helped to render a group of SEA researchers international leaders in this type of hyperlipidaemia.

While Esperanza had an impressive career in health-care and science, her cordial nature, kindness, humility and humanity were even more impressive.

Destiny led us to become friends with Esperanza when she came to study medicine in Zaragoza. Over the years, this caring, kind person became our daughter. Santiago Ramón y Cajal said, "*Friends are like teeth. Over the years, we lose them, not always painlessly*". I would add that the loss of some hurts more than others. The pain of losing Esperanza will be very difficult to overcome. The only consolation to her friends, colleagues and associates in the SEA is the knowledge that we will always have her in our hearts. RIP

Miguel Pocoví

DOI of original article:

<https://doi.org/10.1016/j.arteri.2018.08.002>

[☆] Please cite this article as: Pocoví M. Doctora Esperanza María Martorell Mateu. Clin Investig Arterioscler. 2018;30:248.