

## SPECIAL ARTICLE

# Urinary loss of thyroid hormones: An issue to remember



Ismael Capel<sup>a,\*</sup>, Loreley Betancourt<sup>b</sup>, María Florencia Luchtenberg<sup>a</sup>,  
Andreea Muntean<sup>a</sup>, Valeria Arsentales<sup>a</sup>, Judith Jover<sup>a</sup>, Mercedes Rigla<sup>a</sup>

<sup>a</sup> Endocrinology and Nutrition Department, Parc Tauli University Hospital, Sabadell, Barcelona, Spain

<sup>b</sup> Nephrology Department, Parc Tauli University Hospital, Sabadell, Barcelona, Spain

Received 29 January 2023; accepted 19 June 2023

Available online 28 September 2023

## KEYWORDS

Hypothyroidism;  
Proteinuria;  
Nephrotic syndrome;  
Thyroxin-binding  
globulin (TBG)

**Abstract** A 45-year-old woman suffering from primary hypothyroidism, previously well substituted with levothyroxine, was urgently referred from Primary Care to Endocrinology due to very elevated thyrotropin, free thyroxine at low limit of normality, very high cholesterol and generalised oedema. Hypothyroidism was suspected as the main aetiology of this clinical condition. A detailed examination showed nephrotic range proteinuria and the patient was finally diagnosed with lupus nephritis. Urinary loss of thyroid hormones, fundamentally linked to their transport proteins, in patients affected by nephrotic syndrome is sometimes a forgotten phenomenon and one which should be considered in patients with increased levothyroxine requirements. In this report, we present the details of this case and a brief review of the literature on this topic.

© 2023 SEEN y SED. Published by Elsevier España, S.L.U. All rights reserved.

## PALABRAS CLAVE

Hipotiroidismo;  
Proteinuria;  
Síndrome nefrótico;  
Globulina fijadora de  
tiroxina (TBG)

## Pérdida urinaria de hormonas tiroideas: un asunto a recordar

**Resumen** Mujer de 45 años con hipotiroidismo primario, previamente bien sustituido con levotiroxina, remitida de urgencia desde Atención Primaria a Endocrinología por tirotrópina muy elevada, tiroxina libre en límite bajo de la normalidad, colesterol muy elevado y edema generalizado. Se sospechó hipotiroidismo como principal etiología de este cuadro clínico. Un examen detallado mostró proteinuria de rango nefrótico y la paciente fue finalmente diagnosticada de nefritis lúpica. La pérdida urinaria de hormonas tiroideas, ligada fundamentalmente a sus proteínas transportadoras, en pacientes afectos de síndrome nefrótico es a veces un fenómeno

\* Corresponding author.

E-mail address: [icapel@tauli.cat](mailto:icapel@tauli.cat) (I. Capel).

olvidado y que debe tenerse en cuenta en pacientes con requerimientos elevados de levotiroxina. En este artículo presentamos los detalles de este caso y una breve revisión de la literatura sobre este tema.

© 2023 SEEN y SED. Publicado por Elsevier España, S.L.U. Todos los derechos reservados.

## Case description

A 42-year-old woman consulted for symptoms of asthenia, poorly quantified weight loss, diarrhoea and palpitations, with a five-month history. She also complained of itchy eyes and swollen eyelids. As a previous medical history, she presented penicillin allergy, she was a smoker of 10 cigarettes/day and she had suffered from epilepsy since childhood, which remained stable and without crisis in recent years. She was not taking any pharmacological treatment. Physical examination showed a diffuse goitre, erythematous and retracted eyelids, and conjunctival redness. Heart auscultation revealed rhythmic tones, without murmurs, with a frequency of 96 beats per minute. A blood test displayed primary hyperthyroidism [thyrotropin (TSH)  $<0.01 \mu\text{U/ml}$  (reference range – RR: 0.4–4.0), free thyroxine (FT4) 5.33 ng/dl (RR: 0.8–1.9)] and positive anti TSH receptor antibodies [22.96 mU/ml (RR:  $<1.75$ )]. She was diagnosed with Graves–Basedow disease, accompanied by mild thyroid ophthalmopathy and treatment with methimazole 25 mg/day, propranolol 10 mg every 8 h, and selenium 200  $\mu\text{g/day}$  was started. The patient showed good response to methimazole and FT4 levels decreased, so the antithyroid drug dose could be reduced. In contrast, the ophthalmopathy worsened and inflammatory signs became more evident reaching a Clinical Activity Score (CAS) of 3/7. An orbital magnetic resonance imaging (MRI) was performed, which showed eye muscle thickening, with signs of acute inflammation, in the inferior, lateral, and superior rectus muscles of both eyes. Based on those findings, treatment with intravenous pulses of methylprednisolone was started. Response to corticosteroids was good and ocular inflammatory signs improved very significantly. FT4 levels remained controlled with doses of 5–10 mg/day of methimazole but increased if an attempt to reduce the dose or stop the treatment was made. Thus, approximately sixteen months after the onset of disease, the need for definitive treatment of hyperthyroidism was raised. The use of radioiodine was ruled out due to a history of severe thyroid ophthalmopathy. Therefore, a total thyroidectomy was performed without any complications. Anatomopathological analysis of the surgical specimen reported diffuse hyperplasia of thyroid gland. Levothyroxine replacement therapy was started. Levothyroxine requirement was high but good substitution was achieved (TSH 0.53  $\mu\text{U/ml}$ ) with 200  $\mu\text{g/day}$  (2.04  $\mu\text{g/kg/day}$ ).

Eight months later, the patient was urgently referred from her General Practitioner to the Endocrinology Department due to symptoms of generalised oedema and laboratory findings of TSH 86.1  $\mu\text{U/ml}$ , FT4 0.9 ng/dl and

total cholesterol 399 mg/dl (RR: 150–200). She was taking levothyroxine 225  $\mu\text{g/day}$  (2.25  $\mu\text{g/kg/day}$ ) and she assured good compliance (no tablet omissions, taken on an empty stomach).

## Management

On physical examination, there was certainly a generalised tension oedema in both lower extremities. The patient was moderately hypertensive (blood pressure 153/82 mmHg). Cardiorespiratory status was good, without significant abnormalities in auscultation and with an oxygen saturation of 99%. Based on the significant oedema and severe hypercholesterolaemia, not justifiable due to the degree of hypothyroidism she showed, the possibility of nephrotic-range proteinuria was suspected. A semi-quantitative measurement of proteinuria with a dipstick was performed in a single urine sample and it showed proteinuria (+++). The patient was admitted to the Nephrology Department where a 24-h urine collection was performed, which showed a proteinuria of 6.58 g/24 h (RR:  $<0.15$ ). The patient's glomerular filtration rate (GFR) was normal (creatinine 0.80 mg/dl; creatinine clearance 97.1 ml/min). Treatment with furosemide, ramipril, atorvastatin and aspirin was started. Levothyroxine was increased to 275  $\mu\text{g/day}$  (2.75  $\mu\text{g/kg/day}$ ).

A kidney biopsy was carried out and it showed lupus nephritis (mesangial proliferative pattern). Treatment with prednisone, hydroxychloroquine, and mycophenolate mofetil was started. Under the described treatments, the patient showed a very significant improvement in the oedema and reduction of proteinuria which turned negative in a few weeks. Along with the reduction in oedema and proteinuria, a progressive reduction in levothyroxine requirement was observed. Changes in thyroid hormones, proteinuria, weight, and levothyroxine requirement are summarised in [Table 1](#). Changes in proteinuria, TSH and FT4 are represented in [Fig. 1](#).

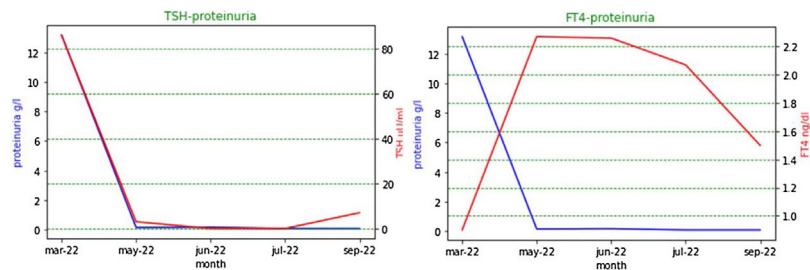
## Areas of uncertainty

This case is a good illustration of the relationship that may exist between the presence of proteinuria and changes in thyroid hormones. Although an increase in levothyroxine requirement may have a multifactorial origin (increased body weight due to oedema, reduced absorption due to intestinal wall oedema) we think that a fundamental element was urinary loss of thyroid hormone binding proteins and, regarding this phenomenon, we decided to do a brief review of the scientific literature on this topic.

**Table 1** Changes in thyroid hormones, proteinuria, weight, and levothyroxine requirement in a patient with post-surgical hypothyroidism and nephrotic syndrome due to lupus nephritis.

Time	LT dose at the time of BT ( $\mu\text{g}$ )	Weight (kg)	LT dose adjusted by weight ( $\mu\text{g}/\text{kg}/\text{day}$ )	TSH ( $\mu\text{U}/\text{ml}$ )	T4L (ng/dl)	Proteinuria (g/l)	24 h proteinuria (if available) (g/24 h)	LT dose prescribed ( $\mu\text{g}/\text{day}$ )	LT prescribed dose adjusted by weight ( $\mu\text{g}/\text{kg}/\text{day}$ )
Mar-22	225	100	2.25	86.1	0.9	13.16	6.58	275	2.75
May-22	275	80.5	3.42	3.06	2.27	0.15		250	3.11
Jun-22	250	80.5	3.11	0.03	2.26	0.17	0.29	200	2.48
Jul-22	200	91	2.2	0.03	2.07	0.08	0.11	150	1.65
Sep-22	150	91	1.65	7.07	1.5	0.08		175	1.92

LT: levothyroxine; BT: blood test.

**Figure 1** Changes in proteinuria, TSH and FT4 in a patient with post-surgical hypothyroidism and nephrotic syndrome due to lupus nephritis.

## Discussion

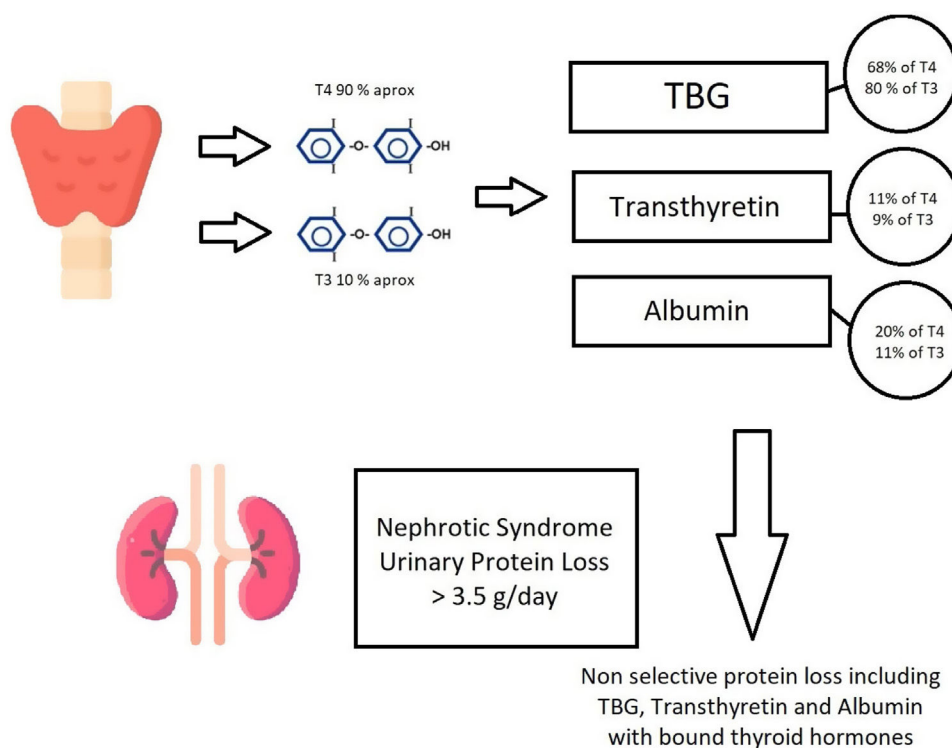
Relationship between thyroid and kidney physiology is very important and increasingly well known. Normality of thyroid hormones is necessary for embryonic development of kidney and thyroid hormones influence the activity of many co-transporters of kidney tubules and regulate glomerular haemodynamics. Thus, it is well established that hypothyroidism leads to a decrease in GFR and an impaired ability to excrete free water. In contrast, hyperthyroidism implies an increase in GFR with decreased serum creatinine and a difficulty in concentrating urine.<sup>1</sup>

When glomerular damage occurs, involving a non-selective loss of serum proteins, it can include a significant loss of thyroid hormone binding proteins. Along with the loss of protein, huge amounts of thyroxine (T4) and triiodothyronine (T3) also leak from the body being able to generate *de novo* hypothyroidism or increase the requirement of levothyroxine in subjects with pre-existing hypothyroidism that is already being treated.<sup>1–5</sup>

The thyroid gland produces daily a mixture of T4 and T3, with a significant major proportion of the former. Mainly in the liver and kidney, type 1 iodothyronine deiodinase activates T4 *via* outer ring deiodination to obtain T3, which is the only one that can bind to the intranuclear thyroid hormone receptor. In many other tissues, such as the pituitary gland or brown adipose tissue, local transformation of T4 to T3 is also produced, catalysed by type 2 iodothyronine deiodinase. While circulating in the plasma, thyroid hormones are mainly transported bound to different proteins.

The protein that transports the largest amounts of thyroid hormones is thyroxine-binding globulin (TBG), a protein of 54 kDa mainly produced in the liver. The two other proteins with an important role in the transport of thyroid hormones are transthyretin (TTR or TBPA) and albumin. TTR, formerly known as prealbumin, is also mainly produced in the liver and has a molecular weight of 55 kDa. Albumin is the most abundant protein in human plasma, has a molecular weight of 66.5 kDa and, apart from very important transport functions, it is the major protein responsible for maintaining the oncotic pressure in body fluids.<sup>6–8</sup>

Nephrotic syndrome classically can occur when there is proteinuria greater than 3.5 g/day, although minor losses (over 3 g/day) can already initiate the process. Many diseases can cause the syndrome (diabetes mellitus, systemic lupus erythematosus, Sjögren syndrome, cryoglobulinemia, amyloidosis, solid or haematological malignancies, infections – syphilis, human immunodeficiency virus, hepatitis B and C). Damage or dysfunctions occur in the glomerulus components (basement membrane, endothelial surface, or epithelial cells – podocytes) that allow a massive leakage of proteins (mainly albumin) from plasma into urine. As a consequence of proteinuria, hypoalbuminemia develops, and it significantly reduces plasmatic oncotic pressure, generating oedema, which can lead to an anasarca condition. Other clinical manifestations of nephrotic syndrome are hypercoagulability and dyslipidaemia. The pathophysiology of these two phenomena is not yet well known. Urinary loss of antithrombotic proteins (protein S, antithrombin) and activators of lipoprotein lipase has been implicated.<sup>9</sup>



**Figure 2** Thyroid hormones production, linkage to binding proteins and loss of proteins when a nephrotic proteinuria occurs. The binding percentages of hormones to carrier proteins are taken from Ref. 8. TBG: thyroxine-binding globulin.

Urinary loss of thyroid hormone-binding proteins and thyroid hormones themselves, in patients with nephrotic-range proteinuria, has been well documented at least since the 1970s. Afrasiabi et al.<sup>10</sup> demonstrated that in subjects with proteinuria > 3 g/day, the levels of total T4 in urine were 24.3  $\mu\text{g/day}$  compared with 1.5  $\mu\text{g/day}$  in healthy subjects. In parallel, urinary TBG levels in patients with nephrotic syndrome were 2.1 mg/day while they were undetectable in subjects without disease. Gavin et al.<sup>11</sup> found a positive correlation between the degree of proteinuria and daily urinary T4 loss (+0.53;  $p < 0.001$ ). Fig. 2 represents thyroid hormone production, linkage to binding proteins and loss of proteins when a nephrotic proteinuria occurs.

In subjects with nephrotic syndrome and an intact thyroid gland, in most cases, thyroid hormone production will be increased to maintain proper function of the hormonal axis. However, in some patients, this adjustment will be insufficient and subclinical or primary hypothyroidism may be triggered. In children with idiopathic steroid-resistant nephrotic syndrome, Marimuthu et al.<sup>5</sup> reported non autoimmune subclinical hypothyroidism in 8/30 patients and overt hypothyroidism in 2/30 patients. In adult patients, the *de novo* appearance of hypothyroidism in the context of nephrotic syndrome seems to be not so frequent, but there are also some case series reports.<sup>12,13</sup>

In patients with pre-existing hypothyroidism and treated with levothyroxine, the occurrence of nephrotic-range proteinuria causes, in most cases, an increase in hormone requirement and there are numerous reports of this phenomenon.<sup>2,14</sup> In some of them, the diagnosis of proteinuria was delayed because symptoms such as oedema or dyslipidaemia are attributed to poorly substituted

hypothyroidism, and levothyroxine malabsorption or non-compliance is suspected. The increase in the requirement of levothyroxine associated with proteinuria has been estimated at around 17%<sup>4</sup> but higher increases in doses could be needed when severe proteinuria exists.

It should be taken into account that autoimmunity is a frequent cause of thyroid and kidney diseases and that both phenomena could coexist on many occasions (as in the case that we present). The relationship between lupus and thyroid autoimmunity is especially significant<sup>15</sup> and antithyroid drug treatments have been associated with a greater risk of developing antibodies that cause vasculitis.<sup>16</sup>

It should also be noted that adjusting the treatment with levothyroxine, or starting it, when necessary, is of great importance, since thyroid hormones in their target tissues can positively contribute to the prognosis of kidney disease.<sup>17,18</sup>

## Conclusions and recommendations

Urinary loss of thyroid hormones, fundamentally linked to their transport proteins, is a phenomenon that must be considered in patients with nephrotic-range proteinuria. In patients with prior hypothyroidism, it will increase levothyroxine requirement and in subjects without prior hypothyroidism it may trigger its occurrence.

Measurement of thyroid hormones should be recommended in patients with nephrotic syndrome, as well as assessing the presence of proteinuria in subjects affected by hypothyroidism who show increased levothyroxine requirement.

## Funding

This article is a clinical case with a review of the literature. It has not had any specific funding.

## Conflict of interests

The authors declare that they have no conflict of interest.

## References

- Iglesias P, Bajo MA, Selgas R, Díez JJ. Thyroid dysfunction and kidney disease: an update. *Rev Endocr Metab Disord*. 2017;18:131–44.
- Benvenga S, Vita R, Di Bari F, Fallahi P, Antonelli A. Do not forget nephrotic syndrome as a cause of increased requirement of levothyroxine replacement therapy. *Eur Thyroid J*. 2015;4:138–42.
- Chandurkar V, Shik J, Randell E. Exacerbation of underlying hypothyroidism caused by proteinuria and induction of urinary thyroxine loss: case report and subsequent investigation. *Endocr Pract*. 2008;14:97–103.
- Karethimmaiah H, Sarathi V. Nephrotic syndrome increases the need for levothyroxine replacement in patients with hypothyroidism. *J Clin Diagn Res*. 2016;10:OC10–2.
- Marimuthu V, Krishnamurthy S, Rajappa M. Non-autoimmune subclinical and overt hypothyroidism in idiopathic steroid-resistant nephrotic syndrome in children. *Indian Pediatr*. 2017;54:925–9.
- Hall JE. Guyton Y hall: compendio de fisiología médica. 13th ed. Madrid: Elsevier; 2016.
- Luongo C, Dentice M, Salvatore D. Deiodinases and their intricate role in thyroid hormone homeostasis. *Nat Rev Endocrinol*. 2019;15:479–88.
- Tresguerres JAF. Fisiología humana. 3rd ed. McGraw Hill: Barcelona; 2005.
- Politano SA, Colbert GB, Hamiduzzaman N. Nephrotic syndrome. *Prim Care*. 2020;47:597–613.
- Afrasiabi MA, Vaziri ND, Gwinup G, Mays DM, Barton CH, Ness RL, et al. Thyroid function studies in the nephrotic syndrome. *Ann Intern Med*. 1979;90:335–8.
- Gavin LA, McMahon FA, Castle JN, Cavalieri RR. Alterations in serum thyroid hormones and thyroxine-binding globulin in patients with nephrosis. *J Clin Endocrinol Metab*. 1978;46:125–30.
- Fonseca V, Thomas M, Katrak A, Sweny P, Moorhead JF. Can urinary thyroid hormone loss cause hypothyroidism? *Lancet*. 1991;338:475–6.
- Trouillier S, Delèvaux I, Rancé N, André M, Voinchet H, Aumaître O. Syndrome néphrotique: penser à rechercher une hypothyroïdie associée [Nephrotic syndrome: don't forget to search for hypothyroidism]. *Rev Med Intern*. 2008;29:139–44.
- Martín Guerra JM, Martín Asenjo M, Prieto Dehesa M, Prieto de Paula JM. Hipotiroidismo primario y síndrome nefrótico [Primary hypothyroidism and nephrotic syndrome]. *Semergen*. 2020;46:216–7.
- Pinto Valdivia M. Lupus enfermedad de Graves y vasculitis. A propósito de un caso [Lupus, Graves' disease, and vasculitis: a case report]. *Endocrinol Nutr*. 2012;59:222–4.
- Harper L, Chin L, Daykin J, Allahabadia A, Heward J, Gough SC, et al. Propylthiouracil and carbimazole associated-antineutrophil cytoplasmic antibodies (ANCA) in patients with Graves' disease. *Clin Endocrinol (Oxf)*. 2004;60:671–5.
- Mario FD, Pofi R, Gigante A, Rivoli L, Rosato E, Isidori AM, et al. Hypothyroidism and nephrotic syndrome: why, when and how to treat. *Curr Vasc Pharmacol*. 2017;15:398–403.
- Shin DH, Lee MJ, Lee HS, Oh HJ, Ko KI, Kim CH, et al. Thyroid hormone replacement therapy attenuates the decline of renal function in chronic kidney disease patients with subclinical hypothyroidism. *Thyroid*. 2013;23:654–61.