

RESEARCH ARTICLE

Reliability for detection of developmental problems using the semaphore from the Child Development Evaluation test: Is a yellow result different from a red result?

Antonio Rizzoli-Córdoba^{a,*}, Fernando Ortega-Ríosvelasco^a, Miguel Ángel Villasis-Keever^b, Mariel Pizarro-Castellanos^a, Guillermo Buenrostro-Márquez^a, Daniel Aceves-Villagrán^c, Gabriel O'Shea-Cuevas^d, Onofre Muñoz-Hernández^e

^aUnidad de Investigación en Neurodesarrollo, Hospital Infantil de México Federico Gómez, Mexico City, Mexico

^bUnidad de Investigación en Epidemiología Clínica, Unidad Médica de Alta Especialidad, Hospital de Pediatría, Centro Médico Nacional Siglo XXI, Instituto Mexicano de Seguro Social, Mexico City, Mexico

^cDirección General del Programa Oportunidades, Comisión Nacional de Protección Social en Salud, Mexico City, Mexico

^dComisión Nacional de Protección Social en Salud, Mexico

^eDirección de Investigación, Hospital Infantil de México Federico Gómez, Mexico City, Mexico

Received 23 July 2014; accepted 8 October 2014

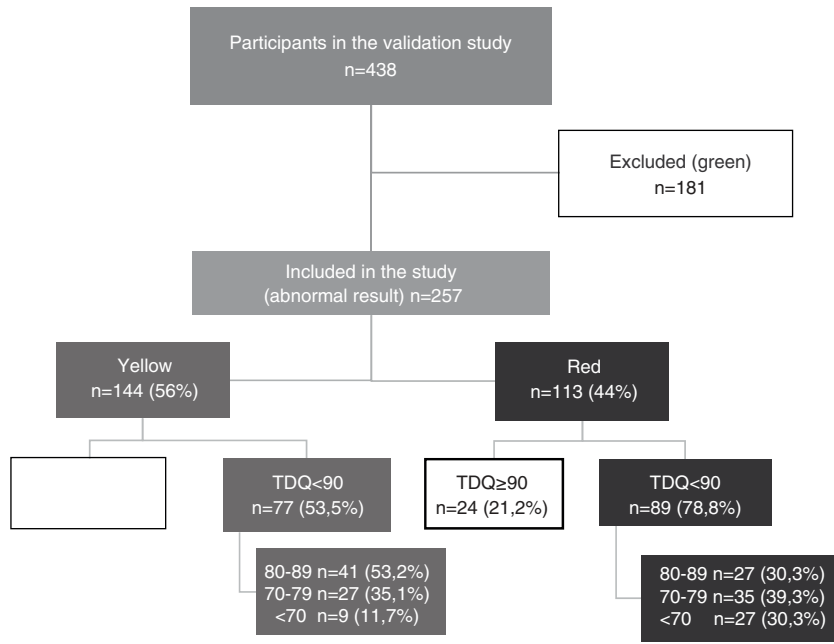
Abstract

Background: The Child Development Evaluation (CDE) is a screening tool designed and validated in Mexico for detecting developmental problems. The result is expressed through a semaphore. In the CDE test, both yellow and red results are considered positive, although a different intervention is proposed for each. The aim of this work was to evaluate the reliability of the CDE test to discriminate between children with yellow/red result based on the developmental domain quotient (DDQ) obtained through the Battelle Development Inventory, 2nd edition (in Spanish) (BDI-2).

Methods: The information was obtained for the study from the validation. Children with a normal (green) result in the CDE were excluded. Two different cut-off points of the DDQ were used (BDI-2): < 90 to include low average, and developmental delay was considered with a cutoff < 80 per domain. Results were analyzed based on the correlation of the CDE test and each domain from the BDI-2 and by subgroups of age.

*Corresponding author.

E-mail: antoniorizzoli@gmail.com (A. Rizzoli-Córdoba).



Domain*

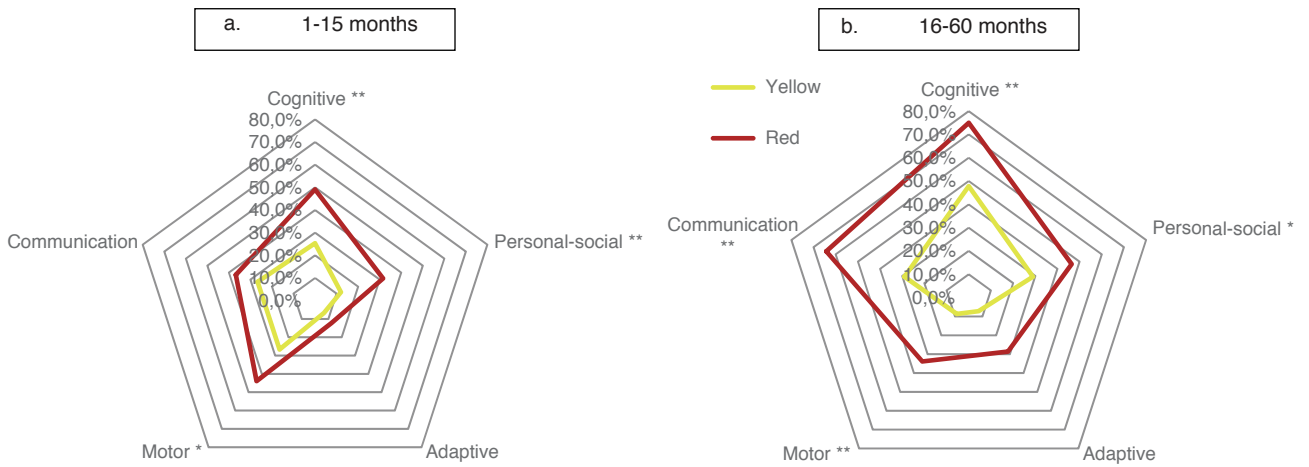
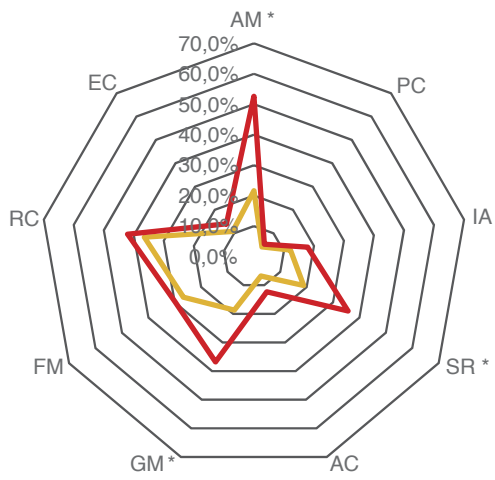
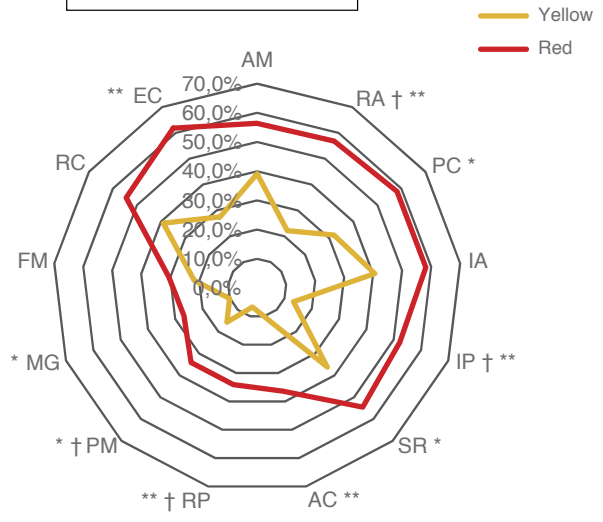


Figure 2 Percentage of children according to domain affected (domain quotient, DQ < 80) and age group comparing the result with the CDE.

a. 1-15 months



b. 16-59 months



Yellow
Red

